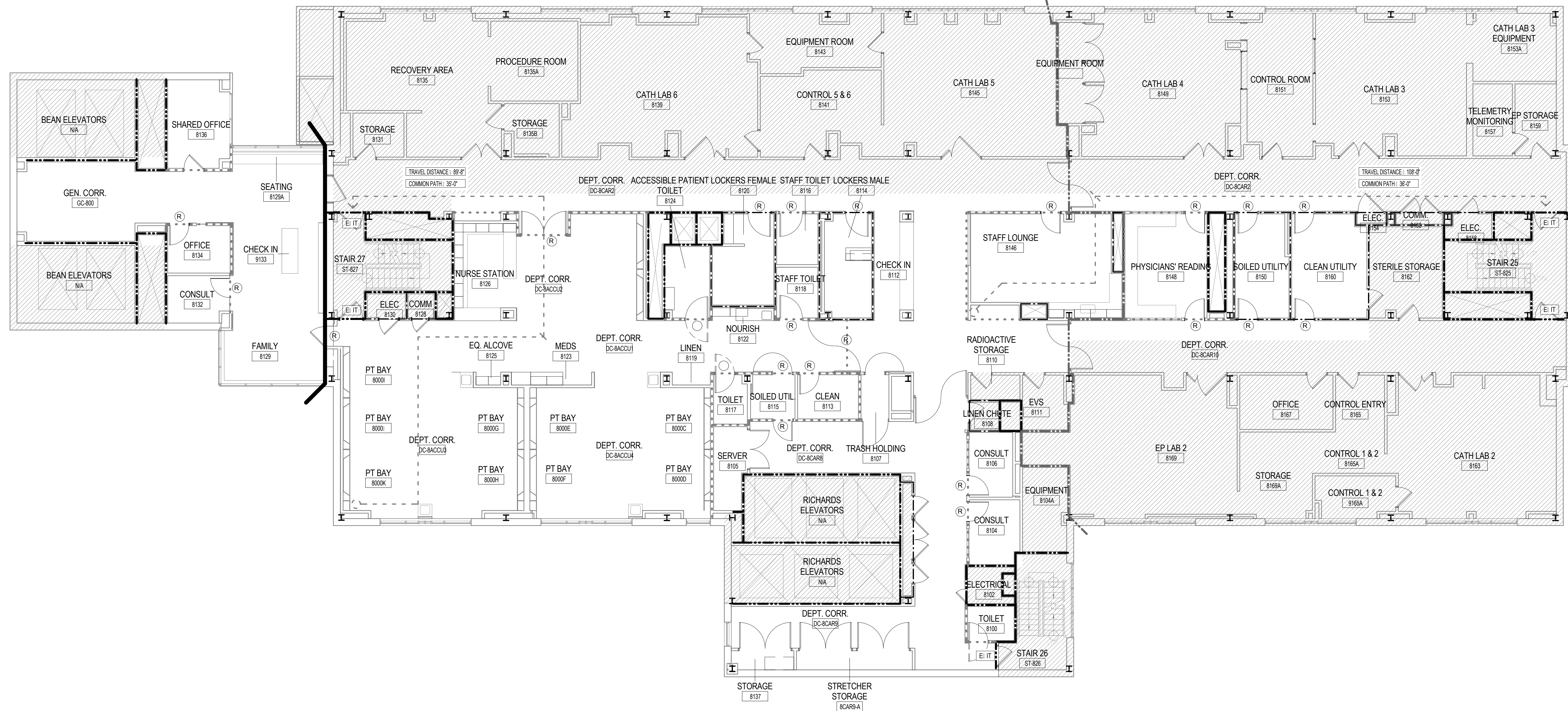


**CONSULTANTS**

**AKF GROUP LLC**  
99 Bradford Street, 2nd Floor  
Boston, MA 02211  
1617.737.1111  
1617.737.4311

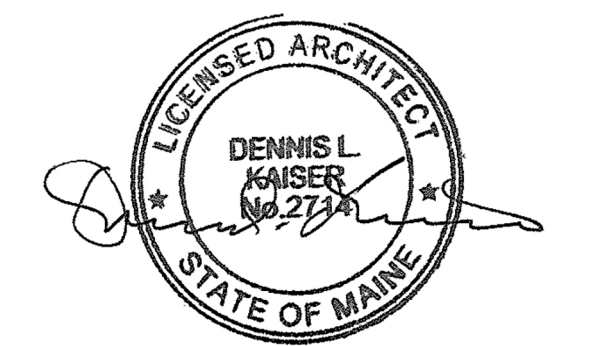
**SGH INC.**  
41 Sevon St.  
Waltham, MA 02453  
1781.907.9000  
1781.907.9009



**PROJECT**  
**ACCU  
RELOCATION**  
22 Bramhall Street  
Portland, Maine 04102



**MAINE MEDICAL  
CENTER**  
22 Bramhall Street  
Portland, Maine 04102



**GENERAL CODE SUMMARY**

BASED ON OCCUPANCY INSTITUTIONAL I-2 WITH SPRINKLERS:  
 PER IBC SECTION 1014.3  
 COMMON PATH OF EGRESS TRAVEL: 75 FEET  
 PER IBC TABLE 1016.1  
 MAXIMUM ALLOWABLE TRAVEL DISTANCE: 200 FEET  
 PER IBC SECTION 1017.3  
 MAXIMUM ALLOWABLE DEAD-END DISTANCE: 20 FEET  
 PER IBC TABLE 1004.1.2  
 FLOOR AREA PER OCCUPANT:  
 INSTITUTIONAL OUTPATIENT: 100 GROSS SF  
 PER IBC SECTION 1006.3  
 ALLOWABLE DOOR CAPACITY:  
 0.2 INCHES/OCCUPANT:  
 170 @ 34" DOOR  
 340 @ 68" DOOR  
 PER IBC SECTION 1006.3  
 ALLOWABLE STAIR CAPACITY:  
 0.3 INCHES/OCCUPANT:  
 160 @ 48" STAIR

**OCCUPANT LOAD CALCULATIONS  
FOR RICHARDS LEVEL 08**

HEALTHCARE	18002	IBC	100 SF/OCC	181	0.2	18.1"	111
		NFPA	100 SF/OCC	181		18.1"	111

**CODE COMPLIANCE PLAN  
LEGEND**

- SMOKE BARRIER WITH TWO HOUR MIN. FIRE RATED CONSTRUCTION
- - - SMOKE BARRIER WITH ONE HOUR MIN. FIRE RATED CONSTRUCTION
- - - - - LIMIT TRANSFER OF SMOKE (NO FIRE-RESISTANT RATINGS)
- ===== TWO HOUR FIRE RATED BUILDING SEPARATION
- ===== TWO HOUR FIRE BARRIER
- ONE HOUR FIRE BARRIER
- ===== NEW PARTITION
- ===== EXISTING PARTITION
- ===== WATER CURTAIN - REFER TO FP DRAWINGS FOR DETAILS
- ▨ OUT OF SCOPE
- 999'-11" TRAVEL DISTANCE: LONGEST ROUTE TO AN E.I.T.
- 999'-11" TRAVEL DISTANCE: DISTANCE TRAVELED BEFORE AN E.I.T. PATH IS CHOSEN
- MHO MAGNETIC HOLD OPEN
- E.I.T. E.I.T./STAIR
- DOOR E.I.T. LOCATION - OCCUPANT LOAD AND WIDTH (IN INCHES):  
 Clear Width: 34" - ACTUAL CLEAR WIDTH PROVIDED  
 Min. O: 240 - MAXIMUM ALLOWED OCCUPANTS PER E.I.T. (IBC 1006.3)  
 Req. Width: 15" - REQUIRED MINIMUM WIDTH PER OCCUPANCY (IBC 1006.3)  
 Cal. O: 192 - CALCULATED ACTUAL OCCUPANTS PER E.I.T. (IBC 1004)

**CODE COMPLIANCE PLAN  
GENERAL NOTES**

**ADDRESS:**  
Maine Medical Center  
22 Bramhall Street  
Portland, ME 04102

**APPLICABLE CODES AND STANDARDS:**

**BUILDING:**  
2009 International Building Code

**FIRE PREVENTION:**  
NFPA 101: Life Safety Code, 2009 Edition  
Chapter 19: Existing Health Care Occupancies  
Portland Fire Prevention Code  
2006 NFPA 1  
Required Fire Protection Systems:  
NFPA 13 sprinkler system (2009 IBC 407.5)  
Fire alarm system (2009 IBC 407.6)  
Standpipe system (2009 IBC 905.3.1)  
Fire extinguishers (2009 IBC 906.1)

**ACCESSIBILITY:**  
Maine Human Rights Commission

**ELECTRICAL:**  
2011 National Electrical Code

**MECHANICAL:**  
ASHRAE 62.1 - 2007  
ASHRAE 62.2 - 2007

**PLUMBING:**  
2009 Uniform Plumbing Code with State Amendments

**ENERGY CONSERVATION:**  
2009 International Energy Conservation Code

**JOINT COMMISSION:**  
NFPA 101 Applicable Code Year: 2000 Edition

**CONSTRUCTION TYPE:**  
TYPE II-A (TABLE 601)  
FIRE SPRINKLERED THROUGHOUT  
YES  
OCCUPANCY GROUPS:  
IBC - CONSTRUCTION TYPE 1B  
NFPA 101 - CONSTRUCTION TYPE II-222

06.24.2016  
**ISSUE CHART**

NO.	ISSUE	DATE
1	ISSUED FOR PERMIT	06.24.2016
2	ISSUE	

Job Number: 152168.029  
Checked: [Signature]  
Approved: [Signature]

**CODE  
COMPLIANCE -  
RICHARDS -  
8**

**SHEET NUMBER**  
**G01-21**