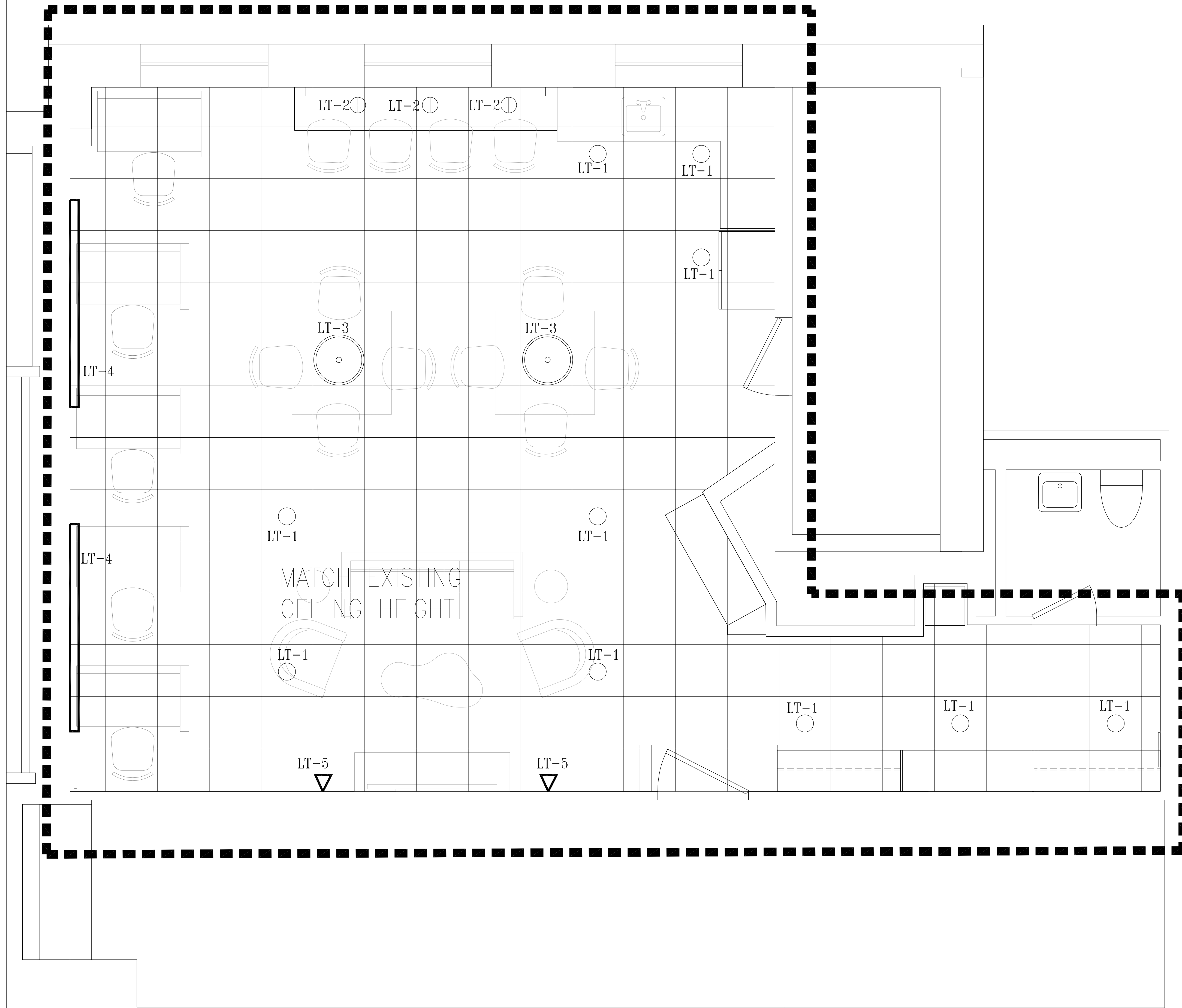


# SCOPE OF WORK LINE



## REFLECTED CEILING PLAN LEGEND:

\$ PROVIDE SEPARATE SWITCH FOR EACH LIGHT FIXTURE TYPE WITH A GANG COVER PLATE. SEE ENGINEERING FOR LOCATION, SPECIFICATION AND ALL REQUIREMENTS. PROVIDE WHITE COLOR, WITH OCCUPANCY SENSORS

CL-1 NEW CEILING GRID AND ACOUSTICAL CEILING TILE  
TILE: ULTIMA VECTOR TILE 1920, COLOR WHITE  
GRID: 1/8" PRELUDE XL GRID, COLOR WHITE

LT-1 ○ 6" LED OPEN DOWNLIGHT  
PRESCOLITE LITEFRAME  
LF6LEDG4-(VOLT) 0-10 DIMMING  
TRIM: 6LFLEDG4-35K-SEMI DIFFUSE WHITE

LT-2 ⊕ DECORATIVE PENDANT

LT-3 ○ SURFACE MOUNT FIXTURE

LT-4  HP-4 FINELITE 6' LINEAR SCONCE

LT-5 ▽ DECORATIVE WALL SCONCE

1. CEILING HEIGHTS NOTED ON PLAN. G.C. TO COORDINATE AND NOTIFY BOULOS COMMERCIAL DESIGN OF ANY CLEARANCE ISSUES FOR LIGHTING, HVAC, SPRINKLER, ETC. TO RELOCATE AS REQUIRED SEE ENGINEERING AND BCD DOCUMENTS AND/OR INSTRUCTIONS.
2. FOR FURTHER INFORMATION ON LIFE SAFETY SYSTEMS REFER TO THE ELECTRICAL AND FIRE PROTECTION DRAWINGS.
3. THE GENERAL CONTRACTOR SHALL RELOCATE EXISTING TO VAV BOXES WHERE POSSIBLE. RELOCATE AS NEEDED WHERE IN CONFLICT WITH FLOOR TO SLAB SOUND PARTITIONS (WALL TYPE 2). SEE ENGINEERING DOCUMENTS.
4. THE G.C. SHALL COORDINATE WITH ALL REQUIRED SUBS TO RELOCATE HVAC SYSTEM ABOVE CEILING AT ALL REQUIRED RAISED CEILING AREAS (IE - COVES, ETC.) SHALL BE COORDINATED BY THE G.C. AND SHALL HAVE ALL HVAC, PIPING, ETC. MOVED AS NEEDED.
5. ALL LIGHT FIXTURES AT CONFERENCE AND HUDDLE ROOMS TO BE ON DIMMING SYSTEM, COORDINATE ALL SWITCHING WITH ELECTRICAL PLANS. ALL VARYING LIGHT FIXTURE TYPES SHALL BE SWITCHED SEPARATE, UNDER SINGLE COVER PLATE.
6. LEVEL CEILING TO WITHIN 1/8" IN 12 FEET IN ANY DIRECTION. LEVEL WITH HANGER WIRE TAUT AND PLUMB, WITHOUT KINKING OR BENDING HANGER WIRES.
7. SPRINKLER SUB-CONTRACTOR SHALL MODIFY AND/OR RELOCATE SPRINKLER MAINS, BRANCHES AND HEADS TO COORDINATE WITH ARCHITECTURAL REFLECTED CEILING PLANS AND MECHANICAL AIR DISTRIBUTION PLANS TO PROVIDE COVERAGE PER TENANT SPECIFICATIONS. CENTER HEADS IN 2x2 TILE UNLESS OTHERWISE APPROVED.
8. REFERENCE ENGINEERING DRAWINGS FOR EXIT SIGN, STROBES, T-STATS AND SPRINKLER LOCATIONS - BOULOS COMMERCIAL DESIGN SHALL APPROVE ALL LOCATIONS PRIOR TO INSTALLATION. ALL SWITCHING, T-STATS AND STROBES SHALL ALIGN VERTICALLY ON CENTERLINE AND SHALL BE INSTALLED LEVEL. ENGINEER TO COORDINATE WITH BCD FOR AVOIDING ARTWORK, WHITEBOARD AND DECORATIVE LOCATIONS. WHERE APPLICABLE, IN MEETING ROOMS AND CONFERENCE ROOMS, ALIGN HORN AND STROBE (FIRE PROTECTION DEVICES) WITH LIGHT SWITCH. SO THAT FIRE PROTECTION DEVICES ARE NOT LOCATED IN THE MIDDLE OF THE WALL. CONFIRM LOCATIONS OF SUCH DEVICES WITH ARCHITECT PRIOR TO INSTALLATION.
9. IT IS THE RESPONSIBILITY OF THE G.C. AND ALL RELATED SUBS TO MAKE SURE ALL LIGHT FIXTURES ARE ORDERED WITH THE PROPER TRIMS PER THE REQUIRED CEILING TYPE. ALL ELECTRICAL SUBS SHALL RECEIVE ARCHITECTURAL DOCUMENTS AS WELL AS ENGINEERING AND BOTH ARE TO BE INCLUDED IN TOTAL PRICE FOR THIS PROJECT. THE G.C. WILL BE RESPONSIBLE TO COORDINATE ANY DISCREPANCIES BETWEEN DOCUMENTS. G.C. IS RESPONSIBLE FOR MAKING SURE ELECTRICAL SUBS REVIEW AND UNDERSTAND ARCHITECTURAL DRAWINGS A3 AND A4 AND COORDINATE THEM WITH DRAWINGS FROM ELECTRICAL ENGINEERS.

DESIGNER:  
**BOULOS COMMERCIAL DESIGN, PLLC**  
1 CANAL PLAZA SUITE 500  
PORTLAND ME 04101  
www.bouloscommercialdesign.com  
207-749-1795

SEAL:  
  
OWNER:  
**MAINE MEDICAL CENTER**  
22 BRAMHALL ST  
PORTLAND, ME 04102

ENGINEER:  
  
GENERAL CONTRACTOR

REVISIONS:  
DELTA:                      DATE:

TITLE:  
**REFLECTED CEILING PLAN**

SCALE: 1/8" = 1'-0"

DATE:

**A4**