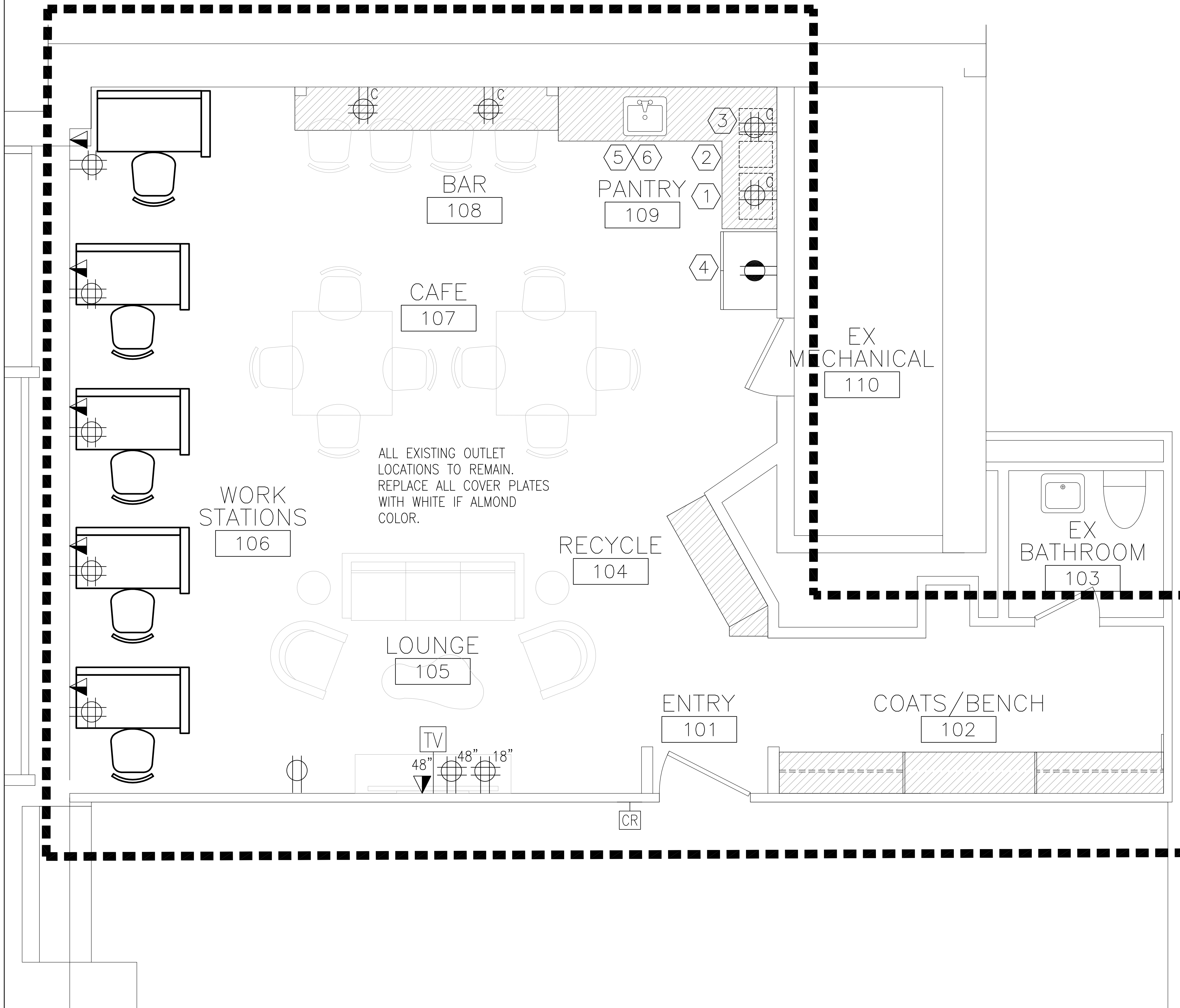


SCOPE OF WORK LINE



ALL EXISTING OUTLET LOCATIONS TO REMAIN. REPLACE ALL COVER PLATES WITH WHITE IF ALMOND COLOR.

POWER, DATA, TEL. LEGEND:

- WALL MOUNTED DUPLEX ELECTRICAL OUTLET MOUNT 18" AFF UNLESS OTHERWISE NOTED
- WALL MOUNTED DEDICATED CIRCUIT ELECTRICAL OUTLET MOUNT 18" AFF UNLESS OTHERWISE NOTED
- WALL MOUNTED QUADRAPLEX ELECTRICAL OUTLET MOUNT 18" AFF UNLESS OTHERWISE NOTED
- WALL MOUNTED TELEPHONE/DATA LOCATION: THE G.C. SHALL PROVIDE SINGLE GANG BOX AND PLASTER RING WITH CONDUIT TO PLENUM AND PULL STRING FOR FUTURE CABLING BY G.C. PROVIDE (1) TELEPHONE AND (3) DATA DROPS PER SYMBOL.
- CARD READER: SINGLE GANG JUNCTION BOX WITH PULL STRING COORDINATE ALL REQUIREMENTS INCLUDING CONDUIT WITH ENGINEERING DRAWINGS. CABLE BY GC
- TELEVISION: SINGLE GANG JUNCTION BOX WITH PULL STRING COORDINATE COAX CABLE REQUIREMENTS INCLUDING CONDUIT WITH ENGINEERING DRAWINGS. CABLE BY GC

EQUIPMENT LIST:

CODE	EQUIPMENT	EQUIPMENT DESCRIPTION
①	MICROWAVE	TBD
②	COFFEE BREWER	TBD
③	WATER FILTRATION LINES	TBD
④	FRIDGE	TBD
⑤	SINK	TBD
⑥	FAUCET	TBD

POWER, DATA, TEL. NOTES:

1. THE INTENT OF THIS DRAWING IS TO SHOW LOCATIONS OF ELECTRICAL AND TELEPHONE/ DATA DEVICES ONLY. REFER TO ELECTRICAL ENGINEERING DOCUMENTS FOR WIRING/CIRCUITING OF ALL ELEMENTS. IT IS THE RESPONSIBILITY OF THE G.C. TO MAKE SURE ALL SUBS RECEIVE ALL DRAWINGS ARCHITECTURE AND ENGINEERING FOR PRICING AND COORDINATION.
2. PRIOR TO CORING THE SLAB FOR ELECTRIC AND DATA LOCATIONS, THE CONTRACTOR SHALL PROVIDE A COORDINATION DRAWING FOR THE ARCHITECT'S REVIEW. IT SHALL BE DONE USING LOCATIONS AS SHOWN ON THE PLAN, THE REQUIREMENTS OF THE SYSTEMS FURNITURE AND FREE STANDING DESKS, CLEARANCE OF EXISTING STRUCTURAL STEEL AND EXISTING OR NEW MECHANICAL, ELECTRICAL AND PLUMBING/FIRE PROTECTION CONSTRUCTION.
3. GENERAL CONTRACTOR SHALL COORDINATE WITH ALL VENDORS AND SUBCONTRACTORS INCLUDING, BUT NOT LIMITED TO- TELEPHONE/DATA, AUDIO/VISUAL, MOVERS AND SECURITY CONTRACTORS.
4. SEE ENGINEERING FOR ALL LOCATIONS OF LIFE SAFETY RELATED EQUIPMENT SUCH AS PULL STATIONS, FIRE STROBES, ETC. RELOCATE WHERE NECESSARY DUE TO LAYOUT, BCD RESERVES THE RIGHT TO REVIEW AND MOVE PRIOR TO INSTALLATION AT NO ADDITIONAL COST TO THE TENANT. G.C. COORDINATE SITE MEETING FOR REVIEW.
5. FOR FURTHER INFORMATION ON LIFE SAFETY SYSTEMS, REFER TO THE ELECTRICAL DOCUMENTS.
6. ALL SWITCHING AND RECEPTACLES SHALL BE WHITE. BOTH NEW AND EXISTING.
7. GANG ALL MULTIPLE SWITCHES AT ONE LOCATION, TOGETHER WITH A COMMON FACE PLATE.
8. ALL WALL MOUNTED OUTLETS SHALL BE INSTALLED AT 18" A.F.F. UNLESS NOTED OTHERWISE.
9. ALL WALL MOUNTED OUTLETS SHOWN BACK-TO-BACK ON PLANS SHALL BE INSTALLED OFF-SET TO PREVENT SOUND TRANSMISSION.
10. ALL WALL MOUNTED SWITCHES SHALL BE INSTALLED AT 48" A.F.F. TO MEET ADA/AAB, UNLESS NOTED OTHERWISE.
11. THE G.C. SHALL COORDINATE AND PROVIDE WATER CONNECTION TO REFRIGERATORS, ICE MACHINE, WATER AND COFFEE MACHINES (U.O.N.) AT CAFE. SEE LEGEND "W" FOR REQUIREMENTS AND DRAWING FOR LOCATIONS.
12. THE G.C. SHALL OPEN PERIMETER GWB AS NEEDED AT NEW POWER OR TEL/DATA AND COORDINATE W/DRYWALL SUB FOR PATCHING AS REQUIRED. THE ELECTRICIAN SHALL ALSO REMOVE ANY EXISTING LOCATIONS NOT SHOWN ON THIS PLAN AND THE DRYWALL SUB SHALL PATCH AS NEEDED - VERIFY IN FIELD.

DESIGNER:
BOULOS COMMERCIAL DESIGN, PLLC
 1 CANAL PLAZA SUITE 500
 PORTLAND ME 04101
 www.bouloscommercialdesign.com
 207-749-1795

SEAL:
 OWNER:
MAINE MEDICAL CENTER
 22 BRAMHALL ST
 PORTLAND, ME 04102

ENGINEER:
 GENERAL CONTRACTOR:

REVISIONS:
 DELTA: DATE:

TITLE:
POWER, DATA, TEL. LOCATION PLAN

SCALE: 1/8" = 1'-0"
 DATE:

A3