

DEMOLITION LEGEND:

- S1 DEMOLITION NOTE
 - EXISTING CONSTRUCTION TO REMAIN
 - EXISTING CONSTRUCTION TO BE REMOVED
- NOTE: ALL NUMBERS OMITTED ARE NOT IN USE

DEMOLITION NOTES:

- GENERAL NOTES:**
1. THE DEMOLITION PLANS AND ELEVATIONS ILLUSTRATE THE CONCEPT OF THE ARCHITECTURAL DEMOLITION. THEY ARE NOT INTENDED TO BE A COMPLETE REPRESENTATION OF ALL DEMOLITION WORK REQUIRED. ALL DRAWINGS AND SPECIFICATIONS ARE TO BE CONSIDERED WHEN DETERMINING THE SCOPE OF DEMOLITION FOR THE PROJECT. IT IS THE INTENT OF THE DRAWINGS AND SPECIFICATIONS TO REQUIRE DEMOLITION OF ALL BUILDING ELEMENTS AS NECESSARY FOR THE INSTALLATION OF WORK.
 2. DASHED LINES GENERALLY REPRESENT ITEMS TO BE REMOVED. IT IS THE CONTRACTOR'S RESPONSIBILITY TO FIELD VERIFY EXACT LIMITS AND DETAILS OF REQUIRED DEMOLITION AND COORDINATE WITH PLANS AND DETAILS.
 3. REMOVE PARTITIONS TO STRUCTURE ABOVE, UNLESS OTHERWISE INDICATED BY CONSTRUCTION DETAILS.
 4. REMOVE MASONRY FOR NEW OPENINGS AS REQUIRED FOR THE INSTALLATION OF NEW LINTELS.
 5. REMOVE DOORS, FRAMES AND HARDWARE INCLUDING SIDELIGHTS, TRANSOMS AND THRESHOLDS WHERE DOORS ARE SHOWN DASHED, UNLESS OTHERWISE INDICATED.
 6. REMOVE PORTIONS OF ALL SUSPENDED CEILINGS FOR THE INSTALLATION OF NEW WORK TO BE DONE ABOVE CEILINGS, UNLESS OTHERWISE INDICATED. SAVE USABLE COMPONENTS FOR REINSTALLATION WHERE CEILINGS ARE NOT BEING REPLACED.
 7. REMOVE ALL CHALK, MARKER AND TACK BOARDS, SHELVING AND OTHER EQUIPMENT ON WALLS TO BE REMOVED OR FURRED.
 8. REMOVE CONCRETE SLABS AND FILLS AS REQUIRED FOR INSTALLATION OF NEW MECHANICAL, ELECTRICAL AND PLUMBING SERVICES. SEE MECHANICAL, ELECTRICAL AND PLUMBING DRAWINGS.

- PARTITIONS**
- P1 REMOVE STUD AND GYPSUM BOARD PARTITION
 - P2 REMOVE GYPSUM BOARD SOFFIT COMPLETE
 - P3 REMOVE PORTION OF PARTITION FOR NEW OPENING

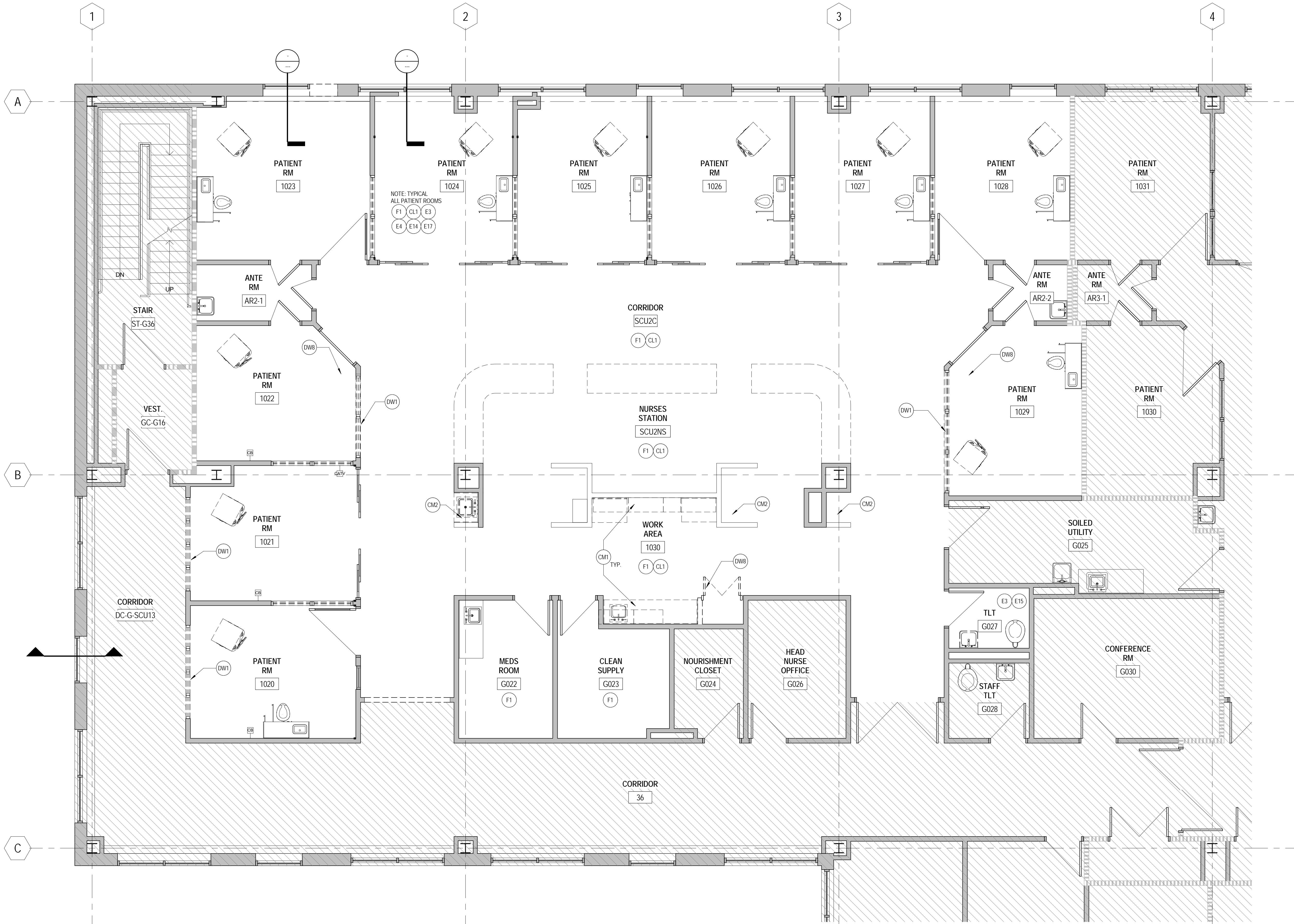
- DOORS AND WINDOWS**
- DW1 REMOVE EXISTING WINDOW(S) COMPLETE
 - DW2 REMOVE DOOR AND HARDWARE ONLY (EXISTING FRAME TO REMAIN)
 - DW3 REMOVE ALUMINUM ENTRANCE UNIT COMPLETE
 - DW4 NOT USED
 - DW5 NOT USED
 - DW6 NOT USED
 - DW7 NOT USED
 - DW8 REMOVE DOOR AND FRAME
 - DW9 REMOVE BORROWED LITE

- FLOORING AND FINISH**
- F1 REMOVE VCT / VINYL SHEET FLOORING
 - F2 NOT USED
 - F3 NOT USED
 - F4 REMOVE BASE
 - F5 NOT USED
 - F6 NOT USED
 - F7 NOT USED
 - F8 NOT USED

- CEILING**
- CL1 REMOVE ACOUSTIC CEILING SYSTEM COMPLETE
 - CL2 NOT USED
 - CL3 REMOVE PORTIONS OF DRYWALL CEILING AS REQUIRED FOR WORK ABOVE CEILING

- CASEWORK AND MILLWORK**
- CM1 REMOVE CABINETS, COUNTERS AND PLUMBING FIXTURES. SEE MECHANICAL, ELECTRICAL AND PLUMBING DRAWINGS
 - CM2 REMOVE LAVATORY COUNTER AND SUPPORTS
 - CM3 NOT USED
 - CM4 REMOVE COUNTERTOP

- EQUIPMENT**
- E1 NOT USED
 - E2 NOT USED
 - E3 REMOVE DISPLAY BOARDS, WINDOW TREATMENTS, MISCELLANEOUS EQUIPMENT COMPLETE. PROVIDE TO OWNER
 - E4 REMOVE SHELVING, RACKS, HOOKS COMPLETE. PROVIDE TO OWNER
 - E5 NOT USED
 - E6 NOT USED
 - E7 NOT USED
 - E8 NOT USED
 - E9 REMOVE PLUMBING FIXTURES COMPLETE. SEE PLUMBING DRAWINGS
 - E10 NOT USED
 - E11 NOT USED
 - E12 NOT USED
 - E13 NOT USED
 - E14 REMOVE HVAC EQUIPMENT - FIN TUBE AND CABINET ENCLOSURE
 - E15 REMOVE NOT USED
 - E16 REMOVE NOT USED
 - E17 REMOVE VERTICAL HEADWALL AND ALL ASSOCIATED ELECTRICAL AND PLUMBING

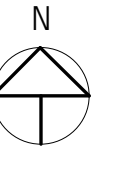


MAINE MEDICAL CENTER

**MMC SCU2
RENOVATIONS**

22 Bramhall Street, Portland, ME,
04102

NO.	DESCRIPTION	DATE



CONTENT: GROUND FLOOR DEMOLITION PLAN	
DRAWN BY:	RH
PROJECT NO.:	15-072-00
DATE:	01/22/16
REVISED:	
SCALE:	As Indicated
AD.1s	
Project Phase ISSUED FOR PERMIT	
<small>COPYRIGHT © 2016 BY LAVALLEE/BRENSINGER PROFESSIONAL ASSOCIATION. ALL RIGHTS RESERVED. NO REPRODUCTION WITHOUT PERMISSION.</small>	

1/22/2016 4:11:00 PM C:\Projects\15072-00\MMC\CTD1_2\cmaad\15_SC_1.dwg