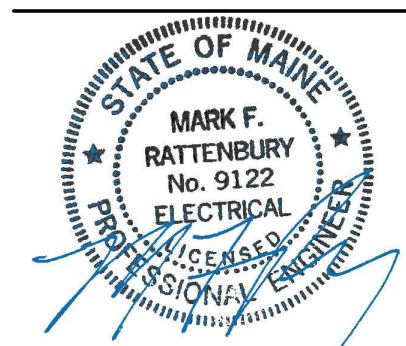




225 Franklin Street, Suite 1100  
Boston, MA 02110  
1617.478.0300  
1617.478.0321  
www.perkinswill.com

**CONSULTANTS**

**AKF Group, LLC**  
99 Bedford Street, 2nd Floor  
Boston, MA 02111  
1617.737.1111  
1617.737.4311



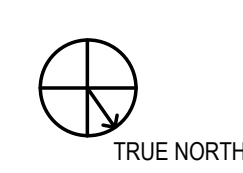
**PROJECT**

**MMC Cath Lab 4**  
22 Bramhall Street  
Portland, ME 04102

**Maine Medical Center**  
MaineHealth

**Maine Medical Center**  
22 Bramhall Street  
Portland, ME 04102

**KEYPLAN**



**ISSUE FOR BID**  
01/15/2016  
**ISSUE CHART**

NO	ISSUE	DATE
Job Number	B150268-000	
Checked	MFR	
Approved	MFR	

**TITLE**  
**ELECTRICAL SCHEDULES & RISER DIAGRAMS**

**SHEET NUMBER**

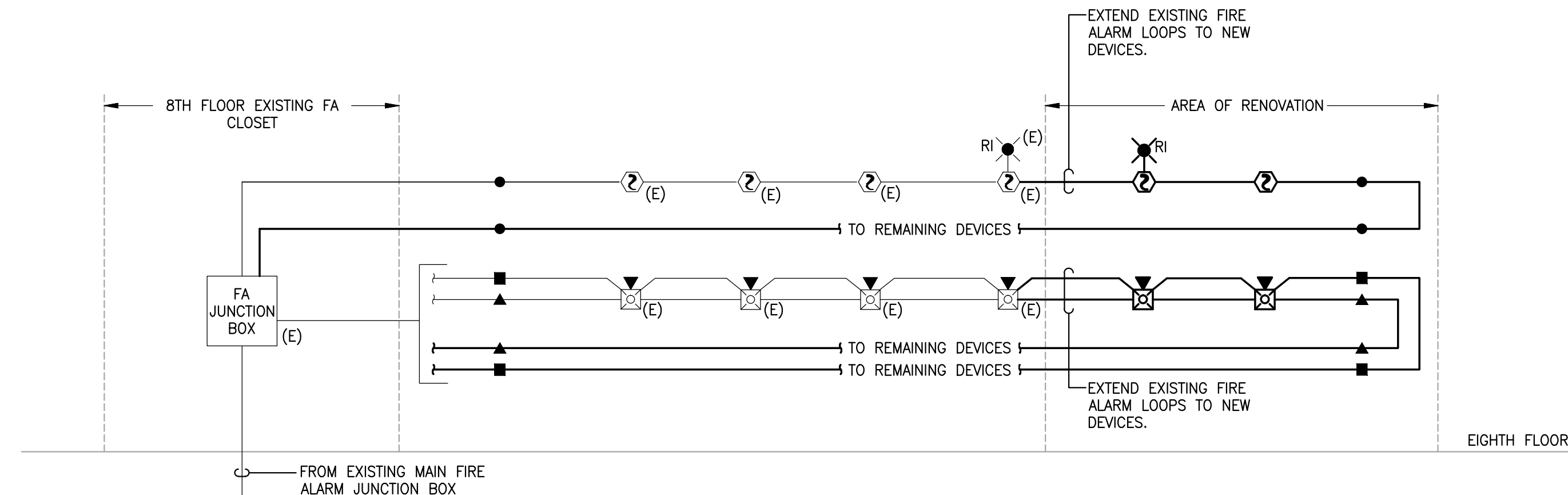
**E-600**

FIXT. TYPE	DESCRIPTION	LAMPS		BALLAST		VOLTAGE	MANUFACTURER	CATALOG NUMBER	REMARKS SEE NOTES 1, 2, 3, 4
		NO.	WATTS	TYPE	NO.				
R1	CEILING RECESSED 6" LED DOWNLIGHT	1	13	LED	1	Y	UNV	CREE LIGHTING KR6-9L-40K-120V	
R2	CEILING RECESSED LINEAR 4" LED SLOT FIXTURE	1	18.2	LED	1	Y	120V	FINELITE HP-4 R-4-SO-4000K-120V-SC	
R3	CEILING RECESSED LINEAR 4" LED SLOT FIXTURE	1	9	LED	1	Y	120V	FINELITE HP-4 R-2-SO-4000K-120V-SC	
S1	WALL SURFACE LINEAR 2" FLUORESCENT FIXTURE	1	17	LED	1	Y	120V	H.E. WILLIAMS 75L-2-L15/840-DMA-120	

- LIGHTING FIXTURE SCHEDULE NOTES:**
- COORDINATE ALL FIXTURE FINISH COLORS WITH ARCHITECT PRIOR TO BID.
  - COORDINATE COLOR AND TEMPERATURE OF ALL LAMPS WITH ARCHITECT.
  - COORDINATE FIXTURE LENGTHS WITH ARCHITECTURAL FLOOR PLANS.
  - COORDINATE FIXTURE TRIM WITH CEILING TYPE WHERE FIXTURE IS BEING INSTALLED.

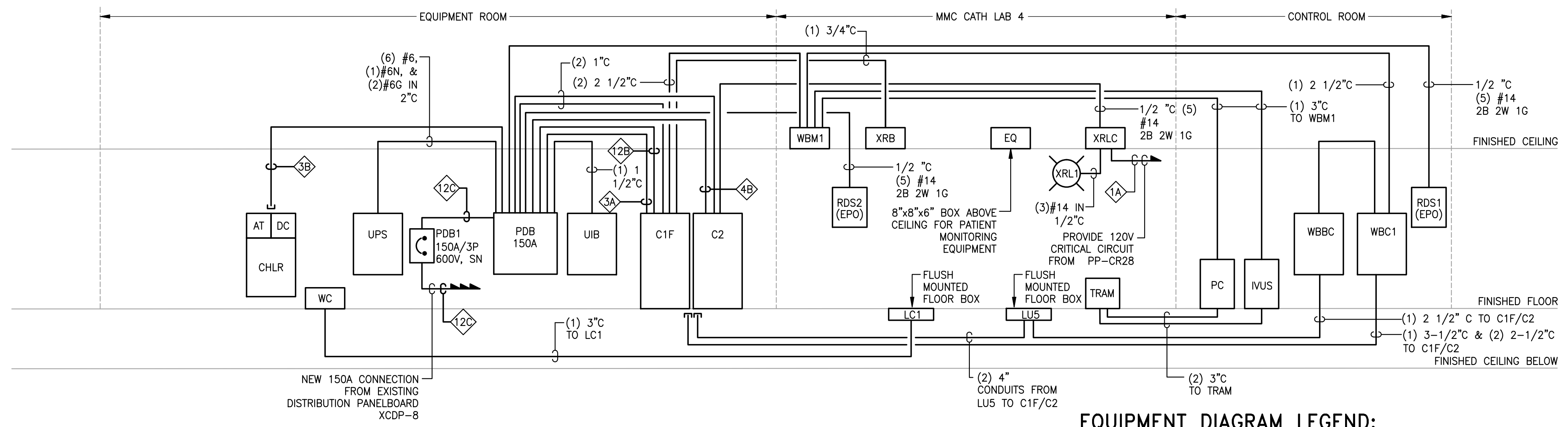
AMPS	TAGS	WIRE SIZE (AWG/KCMIL)		No. OF WIRES AND CONDUIT SIZE (IN INCHES)		
		CONDUCTOR PHASE AND NEUTRAL	GROUND	(A) 1PH, 2W+G	(B) 3PH, 3W+G	(C) 3PH, 4W+G
15	1	12	12	3/4	3/4	3/4
20	2	12	12	3/4	3/4	3/4
30	3	10	10	3/4	3/4	3/4
40	4	8	10	3/4	3/4	3/4
50	5	6	10	3/4	1	1
60	6	4	10	1	1-1/4	1-1/4
70	7	4	8	1	1-1/4	1-1/4
80	8	3	8	1	1-1/4	1-1/4
90	9	2	8	1-1/4	1-1/4	1-1/2
100	10	1	8	1-1/4	1-1/2	2
125	11	1	6	1-1/4	1-1/2	2
150	12	1/0	6	1-1/2	2	2
175	13	2/0	6	1-1/2	2	2-1/2
200	14	3/0	6	2	2	2-1/2
225	15	4/0	4	2	2-1/2	2-1/2
250	16	250	4	2	2-1/2	3
275	17	300	4	2-1/2	3	3
300	18	350	4	2-1/2	3	3
350	19	500	3	3	4	4
400	20	500	3	3	4	4
450	21	(2)4/0	(2)2	(2)2-1/2	(2)2-1/2	
500	22	(2)250	(2)2	(2)2-1/2	(2)3	
600	23	(2)350	(2)1	(2)3	(2)4	
700	24	(2)500	(2)1/0	(2)4	(2)4	
800	25	(2)500	(2)1/0	(2)4	(2)4	
1000	26	(3)400	(3)2/0	(3)3	(3)4	
1100	27	(3)500	(3)3/0	(3)3	(3)4	
1200	28	(4)350	(4)3/0	(4)3	(4)4	
1500	29	(4)500	(4)4/0	(4)4	(4)4	
1600	30	(5)400	(5)4/0	(5)4	(5)4	
1900	31	(5)500	(5)250	(5)4	(5)4	
2000	32	(6)400	(6)250	(6)4	(6)4	
2500	33	(6)600	(6)350	(6)4	(6)4	
3000	34	(8)500	(8)400	(8)4	(8)4	

**NOTE:**  
1. THE ABOVE SCHEDULE IS BASED ON 600 VOLT WIRE TYPE THWN/THHN/XHHW AND EMT/RGS CONDUIT  
NUMBER INDICATES FEEDER SIZE IN AMPS AND WIRE  
LETTER INDICATES CONDUIT SIZE AND NUMBER OF WIRES



**1 PARTIAL FIRE ALARM RISER DIAGRAM**  
SCALE: NTS

- FIRE ALARM WIRING LEGEND:**
- CLASS "A" ADDRESSABLE SIGNAL CIRCUIT
  - CLASS "A" AUDIO EVAC. CIRCUITS
  - CLASS "A" STROBE/HANDICAP LIGHT
  - INDICATES CONTINUATION OF WIRING TYPE



**EQUIPMENT DIAGRAM GENERAL NOTES:**

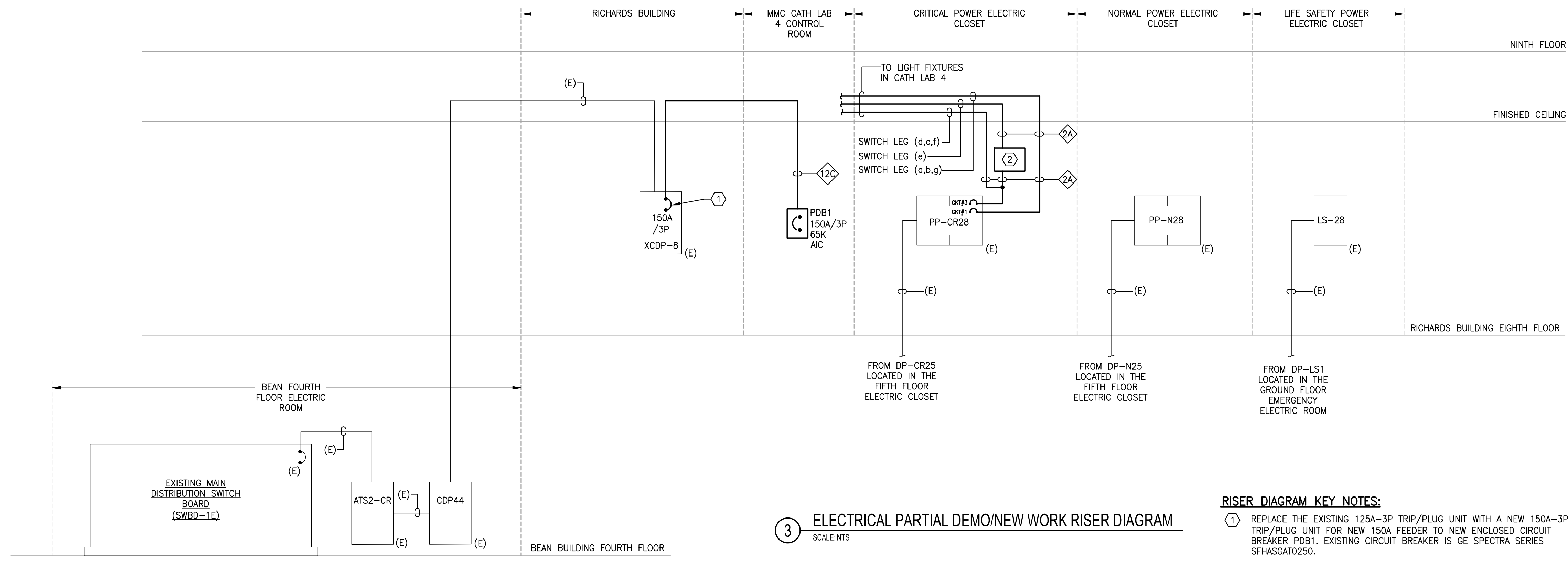
- ADDITIONAL REQUIREMENTS ARE SHOWN ON SITE SPECIFIC EQUIPMENT GE INSTALLATION DRAWINGS. CONTRACTOR SHALL PROVIDE AND INSTALL ITEMS, INCLUDING ALL WIRING, RACEWAYS, INTERLOCKS, CABLING, CABLE TRAY, ETC. AS INDICATED ON THE EQUIPMENT VENDOR'S DRAWINGS. WORK ON VENDOR DRAWINGS SHALL BE COORDINATED BY THE ELECTRICAL CONTRACTOR AND INCLUDED IN ADDITION TO WORK, DEVICES, WIRING, ETC. AS SHOWN ON THESE DRAWINGS.
- CONDUIT/RACEWAY/DEVICES THAT IS EXISTING AND CAN BE RE-USED SHALL BE RE-USED AS ALLOWED BY GE INSTALLATION DRAWINGS.

**2 ELECTRICAL HYBRID OR EQUIPMENT DIAGRAM**  
SCALE: NTS

**EQUIPMENT DIAGRAM LEGEND:**

- AT - COOLUX 4100 AUTO TRANSFORMER
- DC - DETECTOR CHILLER
- C2 - ATLAS EQUIPMENT CABINET
- C1F - ATLAS EQUIPMENT CABINET
- UIB - UPS INTERFACE BOX
- LUS - OMEGA IQ TABLE
- LVC1 - INNOVA LC POSITIONER
- UPS - UPS CABINET
- PC - MACLAB PHYSIO MONITORING
- IVUS - IVUS VOLCANO CONSOLE
- IRAM - TRAM (PHYSIO)
- CHLB - COOLUX 4100 WATER CHILLER
- RDS1 - EMERGENCY POWER OFF BUTTON (EPO)
- RDS2 - EMERGENCY POWER OFF BUTTON (EPO)
- XRLC - "X-RAY ON" WARNING LIGHT
- XRL - WARNING LIGHT CONTROLLER
- WBC1 - OPERATORS CONSOLE
- WBCB - BOLUS WALL BOX
- WBM1 - VENDOR BOOM WITH LAMP / MONITOR
- WC - WATER CHILLER HOSE OUTLET

\* INFORMATION SHOWN FOR REFERENCE ONLY. COORDINATE ALL REQUIREMENTS WITH VENDOR INSTALLATION DRAWINGS. REFER TO EQUIPMENT DIAGRAM GENERAL NOTES FOR ADDITIONAL INFORMATION.



**3 ELECTRICAL PARTIAL DEMO/NEW WORK RISER DIAGRAM**  
SCALE: NTS

**RISER DIAGRAM KEY NOTES:**

- REPLACE THE EXISTING 125A-3P TRIP/PLUG UNIT WITH A NEW 150A-3P TRIP/PLUG UNIT FOR NEW 150A FEEDER TO NEW ENCLOSED CIRCUIT BREAKER PDB1. EXISTING CIRCUIT BREAKER IS GE SPECTRA SERIES SFHAGAT0250.
- WALL MOUNTED PHILIPS BODINE EMERGENCY LIGHTING INVERTER 120V, 250W WITH 90 MINUTE BATTERY BACK-UP. (ELI-S-250).

SAVE DATE: 1/14/2016 3:10 PM

LOGIN: Coussineau, Christopher PLOT DATE: 1/27/2016 3:17 PM

P:\Projects\B1500001\150268-000\Drawings\Elec\B150268-000\_E-600\_SCHEDULES & RISER DIAGRAMS.dwg