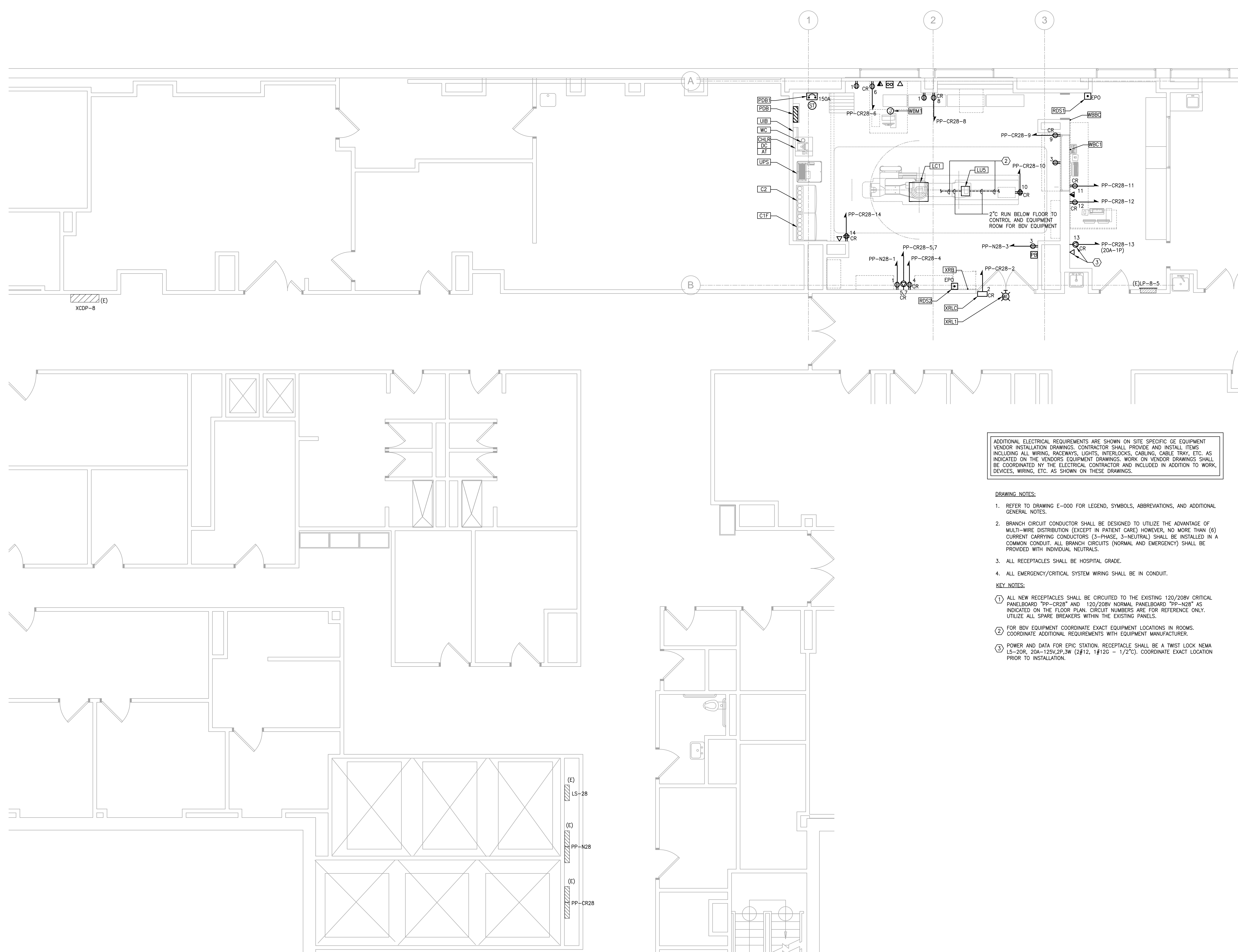




SAVE DATE: 1/14/2016 3:01 PM

LOT DATE: 1/27/2016 3:15 PM

LOGIN: Coussneau, Christopher



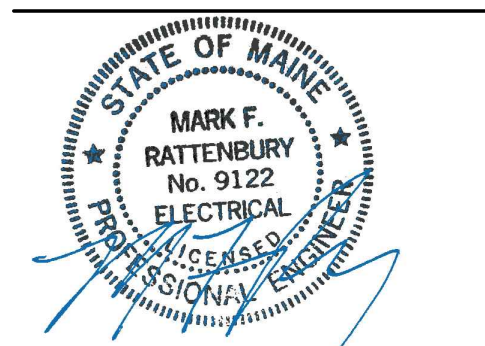
ADDITIONAL ELECTRICAL REQUIREMENTS ARE SHOWN ON SITE SPECIFIC GE EQUIPMENT VENDOR INSTALLATION DRAWINGS. CONTRACTOR SHALL PROVIDE AND INSTALL ITEMS INCLUDING ALL WIRING, RACEWAYS, LIGHTS, INTERLOCKS, CABLING, CABLE TRAY, ETC. AS INDICATED ON THE VENDORS EQUIPMENT DRAWINGS. WORK ON VENDOR DRAWINGS SHALL BE COORDINATED BY THE ELECTRICAL CONTRACTOR AND INCLUDED IN ADDITION TO WORK, DEVICES, WIRING, ETC. AS SHOWN ON THESE DRAWINGS.

- DRAWING NOTES:**
- REFER TO DRAWING E-000 FOR LEGEND, SYMBOLS, ABBREVIATIONS, AND ADDITIONAL GENERAL NOTES.
 - BRANCH CIRCUIT CONDUCTOR SHALL BE DESIGNED TO UTILIZE THE ADVANTAGE OF MULTI-WIRE DISTRIBUTION (EXCEPT IN PATIENT CARE) HOWEVER, NO MORE THAN (6) CURRENT CARRYING CONDUCTORS (3-PHASE, 3-NEUTRAL) SHALL BE INSTALLED IN A COMMON CONDUIT. ALL BRANCH CIRCUITS (NORMAL AND EMERGENCY) SHALL BE PROVIDED WITH INDIVIDUAL NEUTRALS.
 - ALL RECEPTACLES SHALL BE HOSPITAL GRADE.
 - ALL EMERGENCY/CRITICAL SYSTEM WIRING SHALL BE IN CONDUIT.
- KEY NOTES:**
- ALL NEW RECEPTACLES SHALL BE CIRCUITED TO THE EXISTING 120/208V CRITICAL PANELBOARD "PP-CR28" AND 120/208V NORMAL PANELBOARD "PP-N28" AS INDICATED ON THE FLOOR PLAN. CIRCUIT NUMBERS ARE FOR REFERENCE ONLY. UTILIZE ALL SPARE BREAKERS WITHIN THE EXISTING PANELS.
 - FOR BDV EQUIPMENT COORDINATE EXACT EQUIPMENT LOCATIONS IN ROOMS. COORDINATE ADDITIONAL REQUIREMENTS WITH EQUIPMENT MANUFACTURER.
 - POWER AND DATA FOR EPIC STATION. RECEPTACLE SHALL BE A TWIST LOCK NEMA LS-20R, 20A-125V, 2P, 3W (2#12, 1#12G - 1/2"). COORDINATE EXACT LOCATION PRIOR TO INSTALLATION.

1 ELECTRICAL 8TH FLOOR POWER PLAN
SCALE: 1/4"=1'-0"

PERKINS+WILL
225 Franklin Street, Suite 1100
Boston, MA 02110
617.476.0300
617.476.0321
www.perkinswill.com

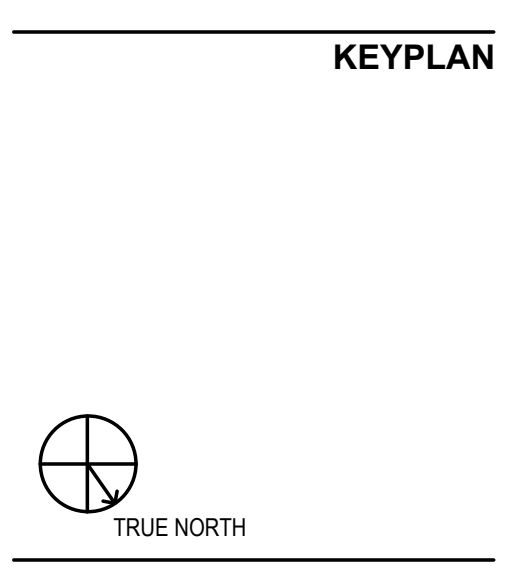
CONSULTANTS
AKF Group, LLC
99 Bedford Street, 2nd Floor
Boston, MA 02111
617.737.1111
617.737.4311



PROJECT
MMC Cath Lab 4
22 Bramhall Street
Portland, ME 04102

Maine Medical Center
MaineHealth

Maine Medical Center
22 Bramhall Street
Portland, ME 04102



ISSUE FOR BID
01/15/2016
ISSUE CHART

NO.	ISSUE	DATE
Job Number	B150268-000	
Checked	MFR	
Approved	MFR	

TITLE
ELECTRICAL
8TH FLOOR
POWER PLAN

SHEET NUMBER
E-300