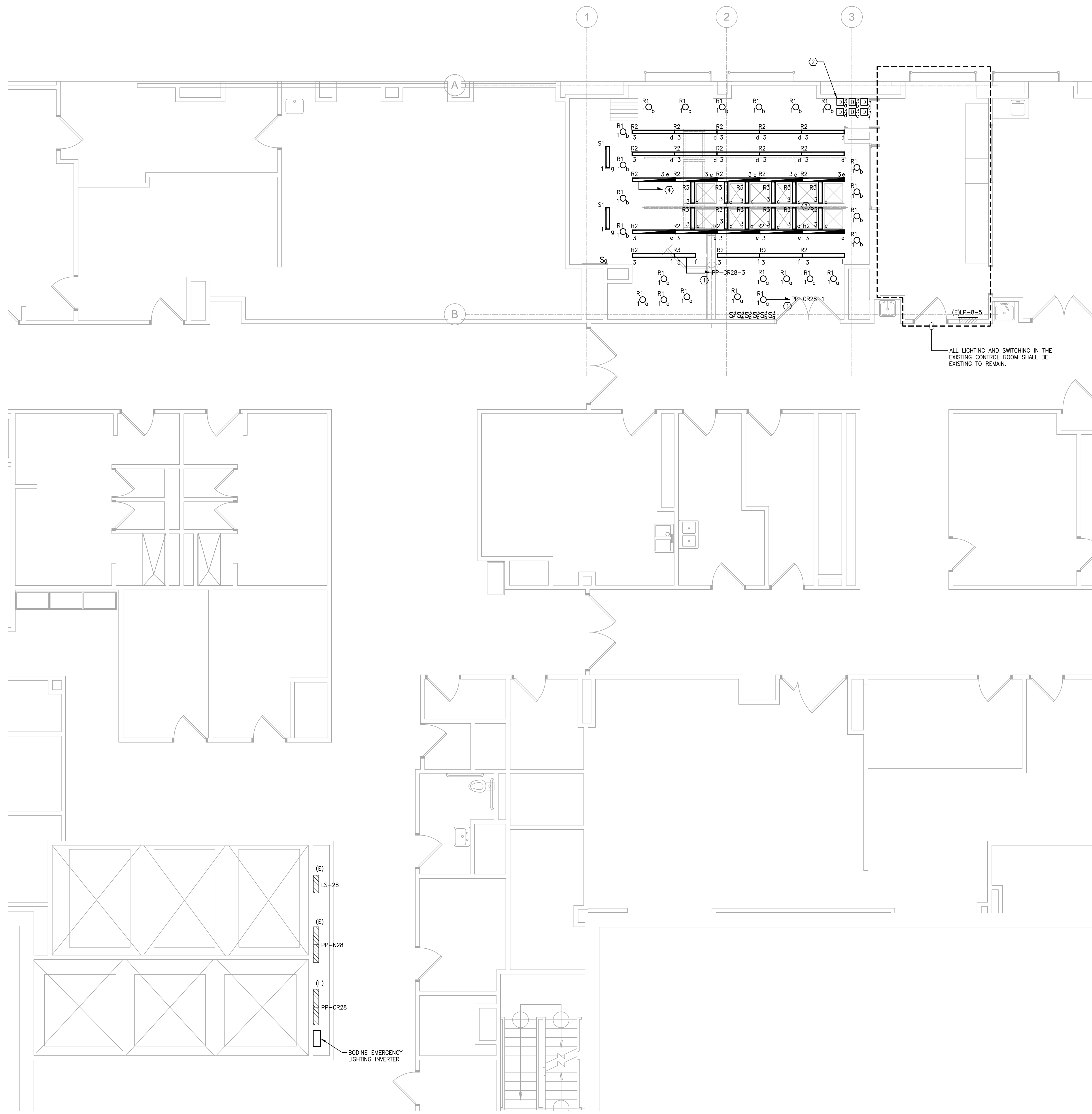


SAVE DATE: 1/14/2016 2:59 PM

LOT DATE: 1/27/2016 3:14 PM

P:\Projects\B1500001\B150268-000\Drawings\Elec\B150268-000\_E-200\_LIGHTING.dwg



**DRAWING NOTES:**

1. REFER TO DRAWING E-000 FOR LEGEND, SYMBOLS, ABBREVIATIONS AND ADDITIONAL GENERAL NOTES.

**KEY NOTES:**

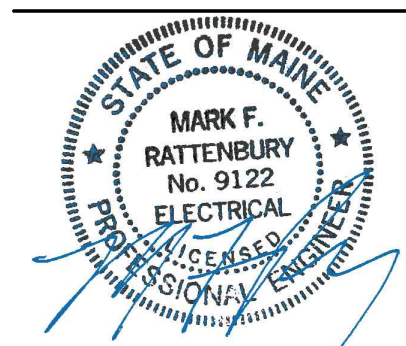
- ① ALL NEW LIGHT FIXTURES SHALL BE CIRCUITED TO THE EXISTING 120/208V CRITICAL PANELBOARD "PP-CR28" AS INDICATED ON THE FLOOR PLAN. CIRCUIT NUMBERS ARE FOR REFERENCE ONLY. UTILIZE ALL SPARE BREAKERS WITHIN THE EXISTING PANEL.
- ② LUTRON DIVA 250W WALL BOX DIMMER, MODEL # DVCL-253P-WH.
- ③ FLOOR MOUNTED FOOT PUSH PEDAL TO CONTROL (ON/OFF) OF ALL LIGHT FIXTURES ON SWITCH LEG (c). COORDINATE EXACT LOCATION PRIOR TO INSTALLATION.
- ④ ALL LIGHT FIXTURES ON SWITCH LEG (s) SHALL BE RUN THROUGH EMERGENCY INVERTER. REFER TO ELECTRICAL RISER DIAGRAM ON DRAWING E-600.



225 Franklin Street, Suite 1100  
Boston, MA 02110  
1617.476.0300  
1617.476.0321  
www.perkinswill.com

**CONSULTANTS**

**AKF Group, LLC**  
99 Bedford Street, 2nd Floor  
Boston, MA 02111  
1617.237.1111  
1617.737.4311



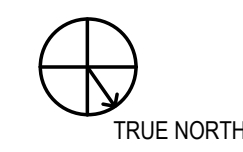
**PROJECT**

**MMC Cath Lab 4**  
22 Bramhall Street  
Portland, ME 04102



**Maine Medical Center**  
22 Bramhall Street  
Portland, ME 04102

**KEYPLAN**



**ISSUE FOR BID**

01/15/2016

**ISSUE CHART**

NO.	ISSUE	DATE
Job Number	B150268-000	
Checked	MFR	
Approved	MFR	

**TITLE**  
**ELECTRICAL**  
**8TH FLOOR**  
**LIGHTING PLAN**

**SHEET NUMBER**

**E-200**

**1 NEW 8TH FLOOR LIGHTING PLAN**  
SCALE: 1/4"=1'-0"