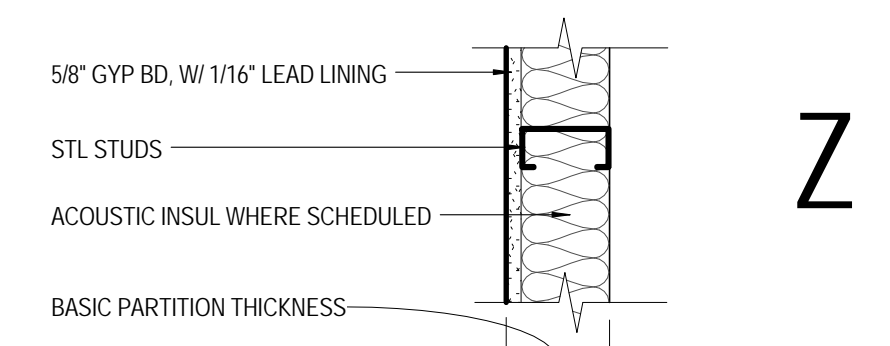
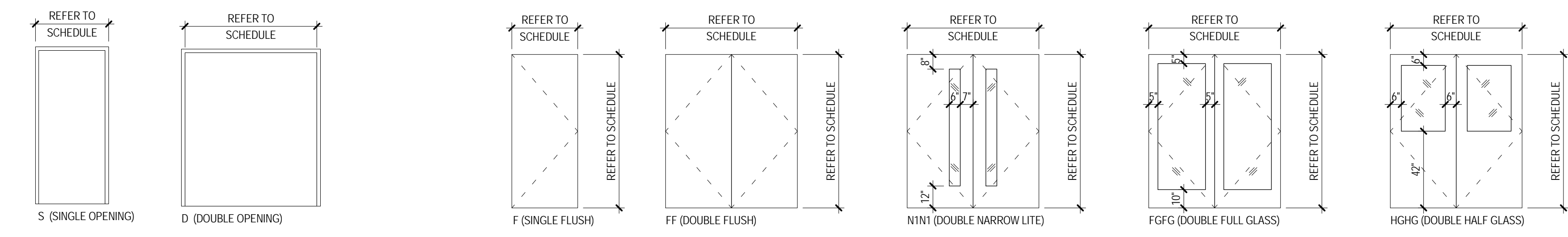


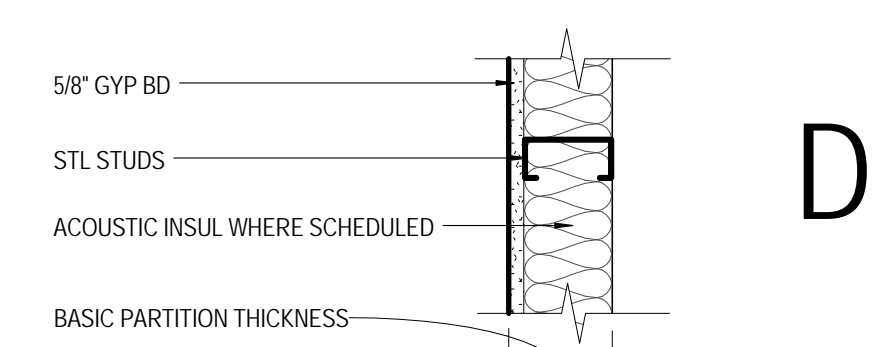
Finish Legend					
Item Code	Manufacturer	Style	Color	Size	Comments
CEILING					
ACT	ARMSTRONG	CLEAN ROOM VL 868	WHITE		COORDINATE WITH RCP
GWB					PRELUDE 1516' EXPOSED T GRID
FLOORING					
RF-1	NORA	NORAPLAN SENTICA	6526 MOUNTAIN AIR	THICKNESS: 3MM	3 COLOR PATTERN
RF-2	NORA	NORAPLAN SENTICA	6527 DEEP SEA	THICKNESS: 3MM	3 COLOR PATTERN
PAINT					
PT-1	SHERWIN WILLIAMS	PRO-GREEN 200 LATEX	CUSTOM TO MATCH BENJAMIN MOORE SUPER WHITE		ALL WALLS U O N
WALL BASE					
RB-1	FLASHCOVE BASE	NORAPLAN SENTICA	6527 DEEP SEA	HEIGHT: 8", THICKNESS: 125"	METAL TRIM CAP PER MANUFACTURER

Finish Schedule						
ROOM NUMBER	ROOM NAME	FLOOR FINISH	BASE MATL	WALL FINISH	CEILING FINISH	COMMENTS
8149	CATH LAB 4	RF-1, RF-2	RB-1	P1	REFER RCP	
8149	EQUIPMENT ROOM	RF-1	RB-1	P1	REFER RCP	
8151	CONTROL ROOM	EXISTING TO REMAIN	EXISTING TO REMAIN	EXISTING TO REMAIN	EXISTING TO REMAIN	

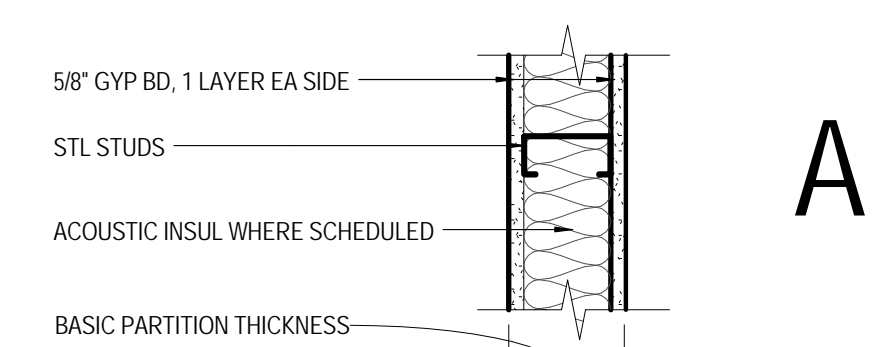
Door and Frame Schedule																		
ROOM NUMBER	TAG	ROOM NAME	RATING	OPENING SIZE		DOOR			FRAME						HARDWARE	REMARKS		
				WIDTH	HEIGHT	TYP	MATERIAL	FINISH	MODEL #	TYPE	MATERIAL	FINISH	JAMB	HEAD			SILL	
8149	8149A	CATH LAB 4	FSTC 50	5'-10"	7'-0"	FF	WD	ACROVYN 4000-949 WHITE	KRIEGER NC12-SCIF PAIR	D	HM	PT-MATCH DOOR		ALUM	ACCURATE LOCK 9100 SERIES	VERIFY LOCK SET WITH DOOR MANUF		
8149	8149C	CATH LAB 4	FSTC 50	5'-10"	7'-0"	FF	WD	ACROVYN 4000-949 WHITE	KRIEGER NC12-SCIF PAIR	D	HM	PT-MATCH DOOR		ALUM	ACCURATE LOCK 9100 SERIES	VERIFY LOCK SET WITH DOOR MANUF		
8149	8149D	CATH LAB 4	FSTC 50	3'-0"	7'-0"	F	WD	ACROVYN 4000-949 WHITE	KRIEGER NC12-SCIF SINGLE	S	HM	PT-MATCH DOOR		ALUM	ACCURATE LOCK 9100 SERIES	VERIFY LOCK SET WITH DOOR MANUF		



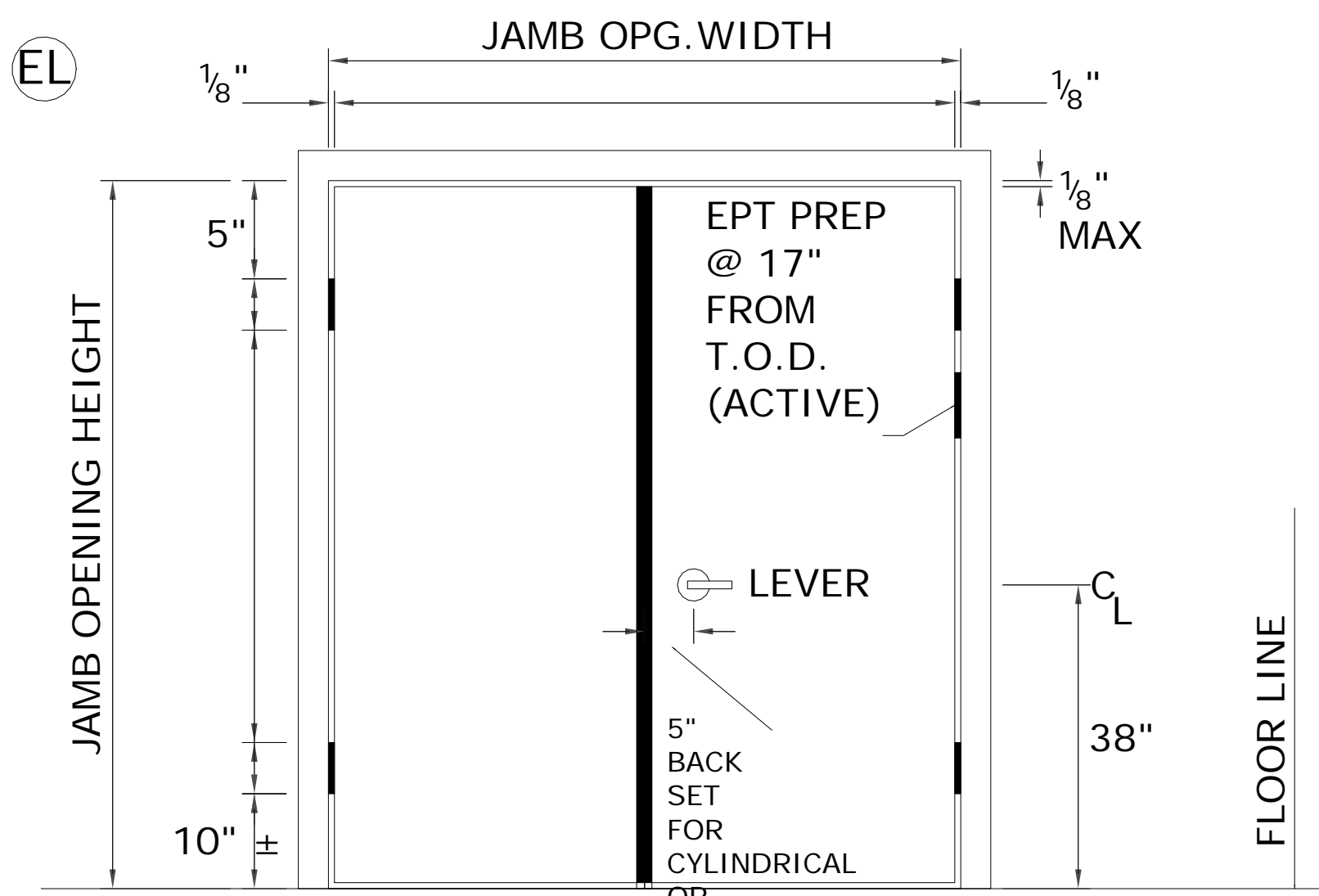
	D1L	D1C	D2L	D2C	D3L	D3C	D4L	D4C	D5L	D5C	D6L	D6C	D7L	D7C	D8L	D8C	D9L	D9C	DETAIL NO
NON-RATED WITH GYP BD TO STRUCTURE ABOVE	D11	27	D21	29	D31	27	D41	30	D51	27	D61	30	D71	27	D81	31	D91	26	01A-8102 SIM
NON-RATED WITH GYP BD TO 6\"/>																			



	D1L	D1C	D2L	D2C	D3L	D3C	D4L	D4C	D5L	D5C	D6L	D6C	D7L	D7C	D8L	D8C	D9L	D9C	DETAIL NO
NON-RATED WITH GYP BD TO STRUCTURE ABOVE	D11	27	D21	29	D31	27	D41	30	D51	27	D61	30	D71	27	D81	31	D91	26	01A-8102 SIM
NON-RATED WITH GYP BD TO 6\"/>																			

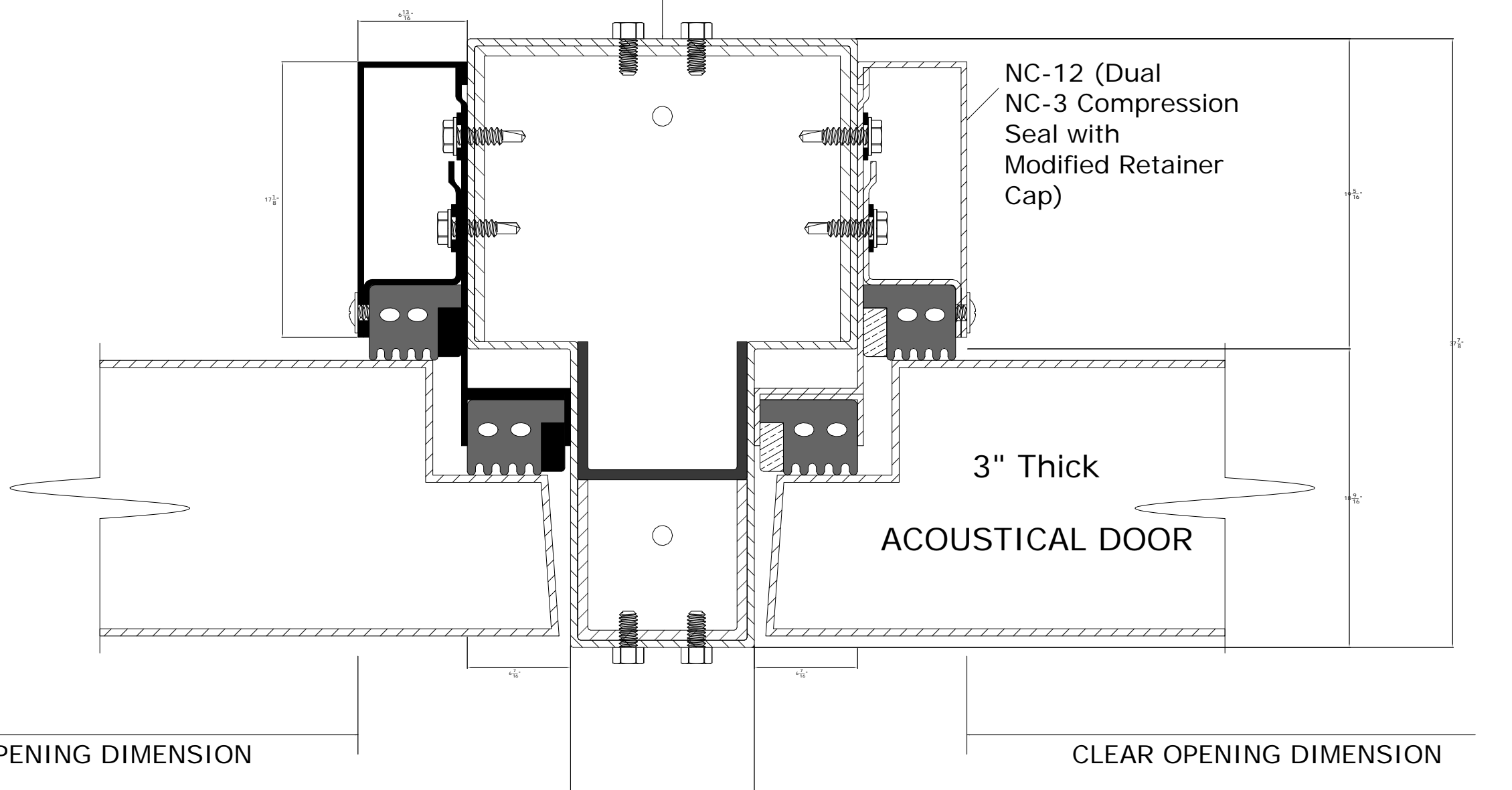


	A2L	A2C	A3L	A3C	A4L	A4C	A5L	A5C	A6L	A6C	A7L	A7C	A8L	A8C	DETAIL NO
1-RATED WITH GYP BD TO STRUCTURE ABOVE	A20	46	A30	47	A40	47	A50	39	A60	47	A70	40	A80	48	01A-8102
NON-RATED WITH GYP BD TO STRUCTURE ABOVE	A11	39	A21	46	A31	39	A41	47	A51	39	A61	47	A71	40	01A-8102 SIM
NON-RATED WITH GYP BD TO 6\"/>															

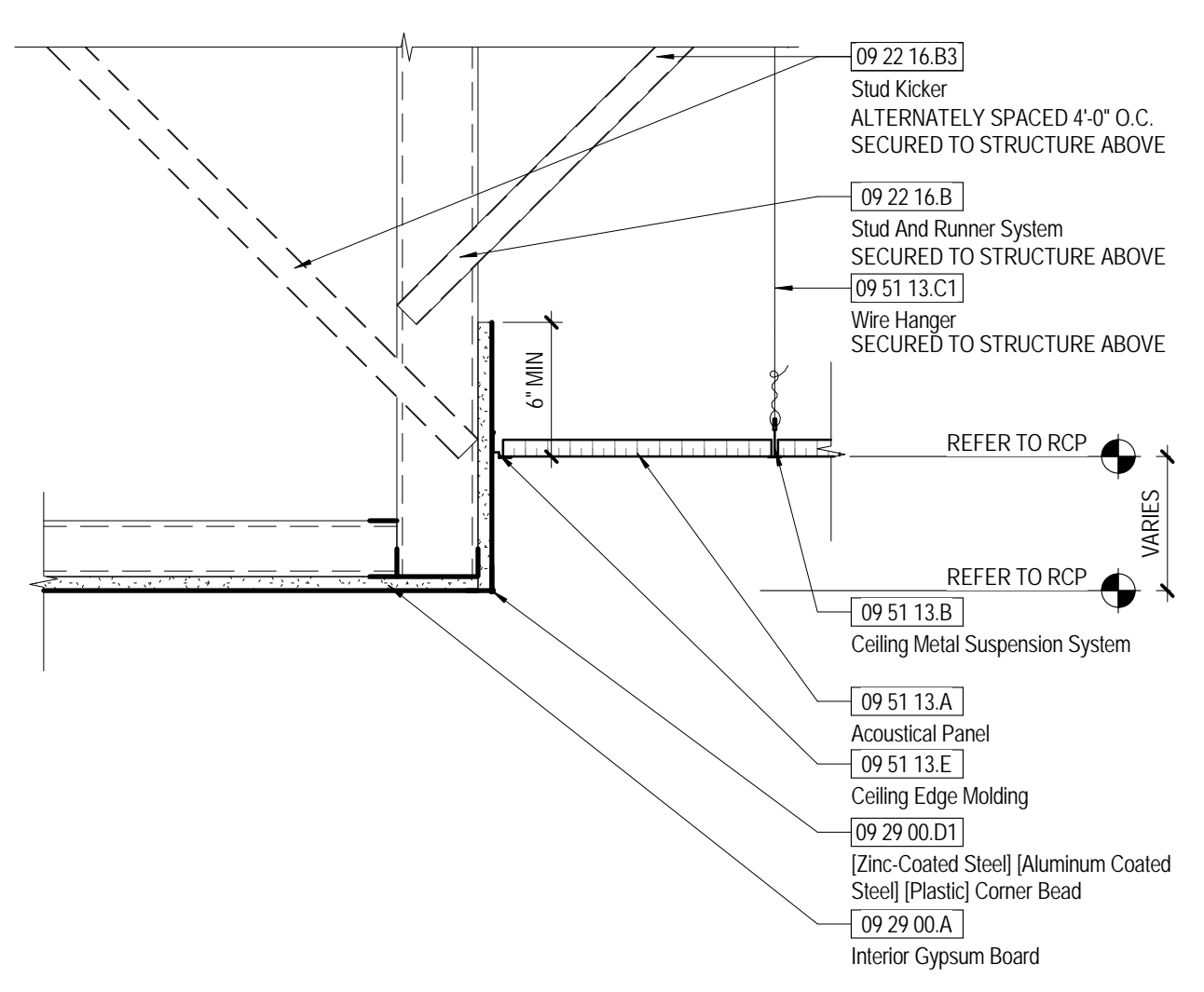


7 NC12 - SCIF - DOOR DETAIL 02  
1 1/2" = 1'-0"

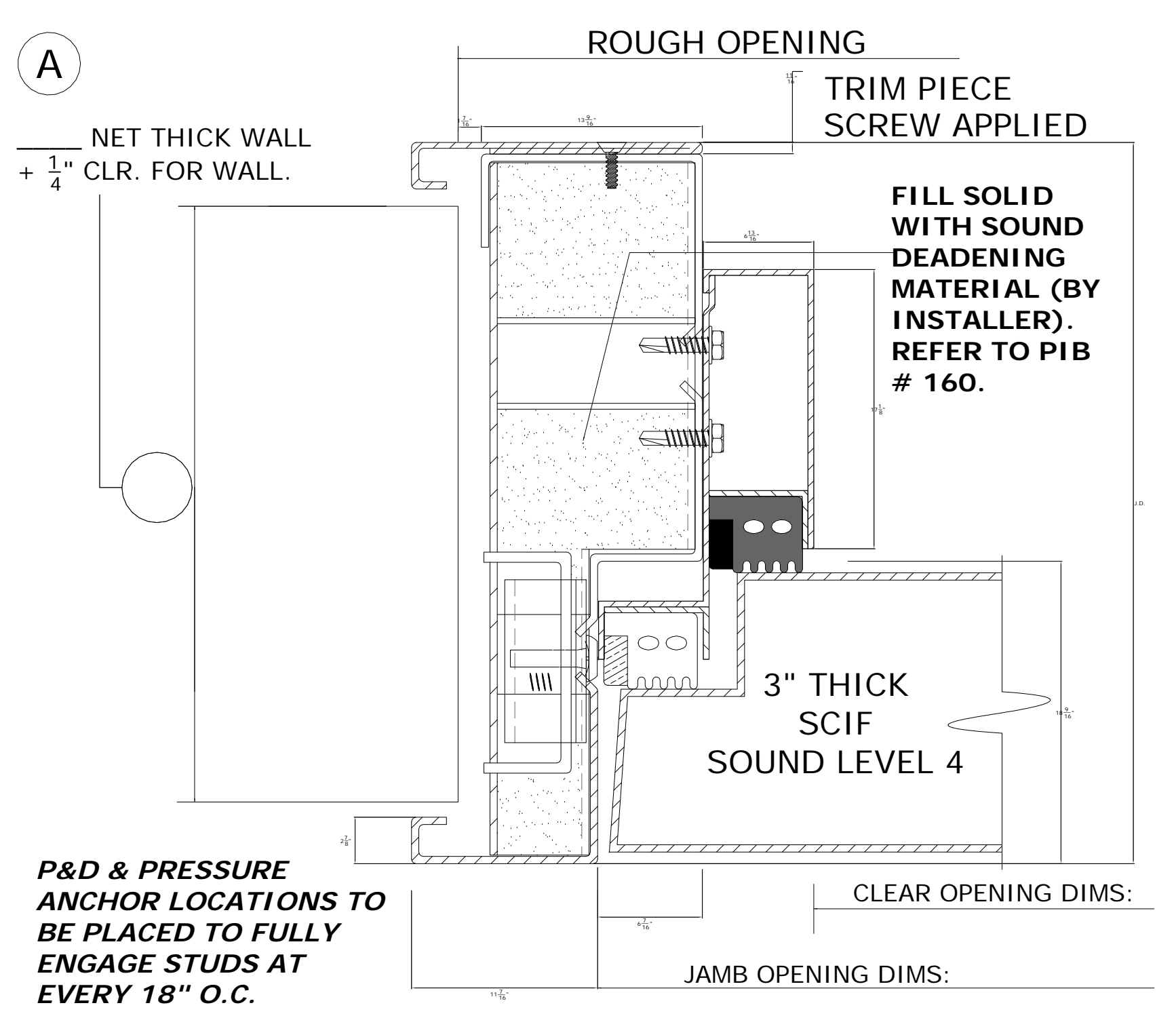
FIELD INSTALL FLOOR ANCHOR & ATTACHED 1/4-20 DIA. HEX HD. SCREWS (2) EACH SIDE AS SHOWN. BY OTHERS



5 NC12 - SCIF - DOOR DETAIL 04  
1 1/2" = 1'-0"

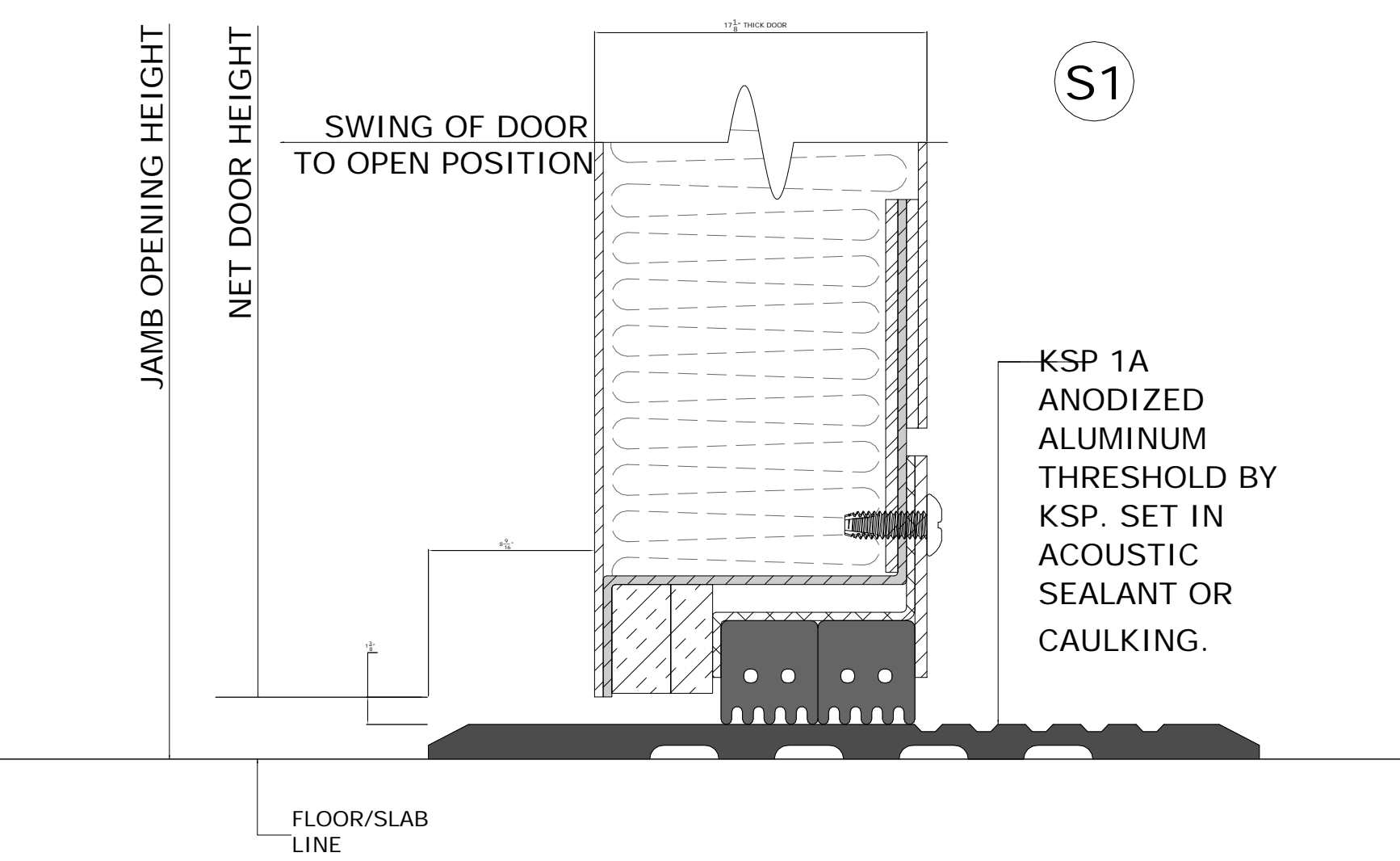


3 ACT TO GWB OFFSET @ BULKHEAD  
1 1/2" = 1'-0"

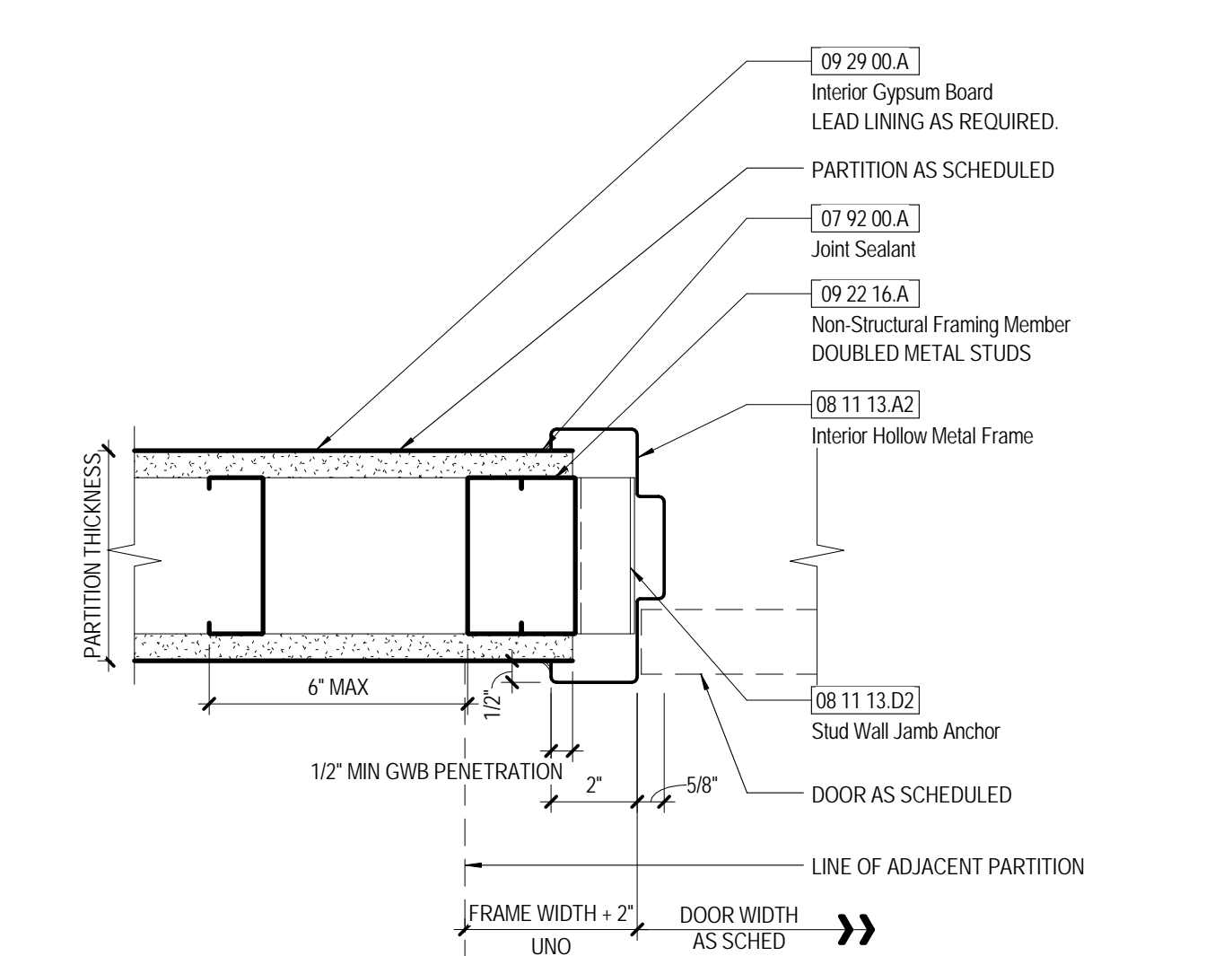


6 NC12 - SCIF - DOOR DETAIL 03  
1 1/2" = 1'-0"

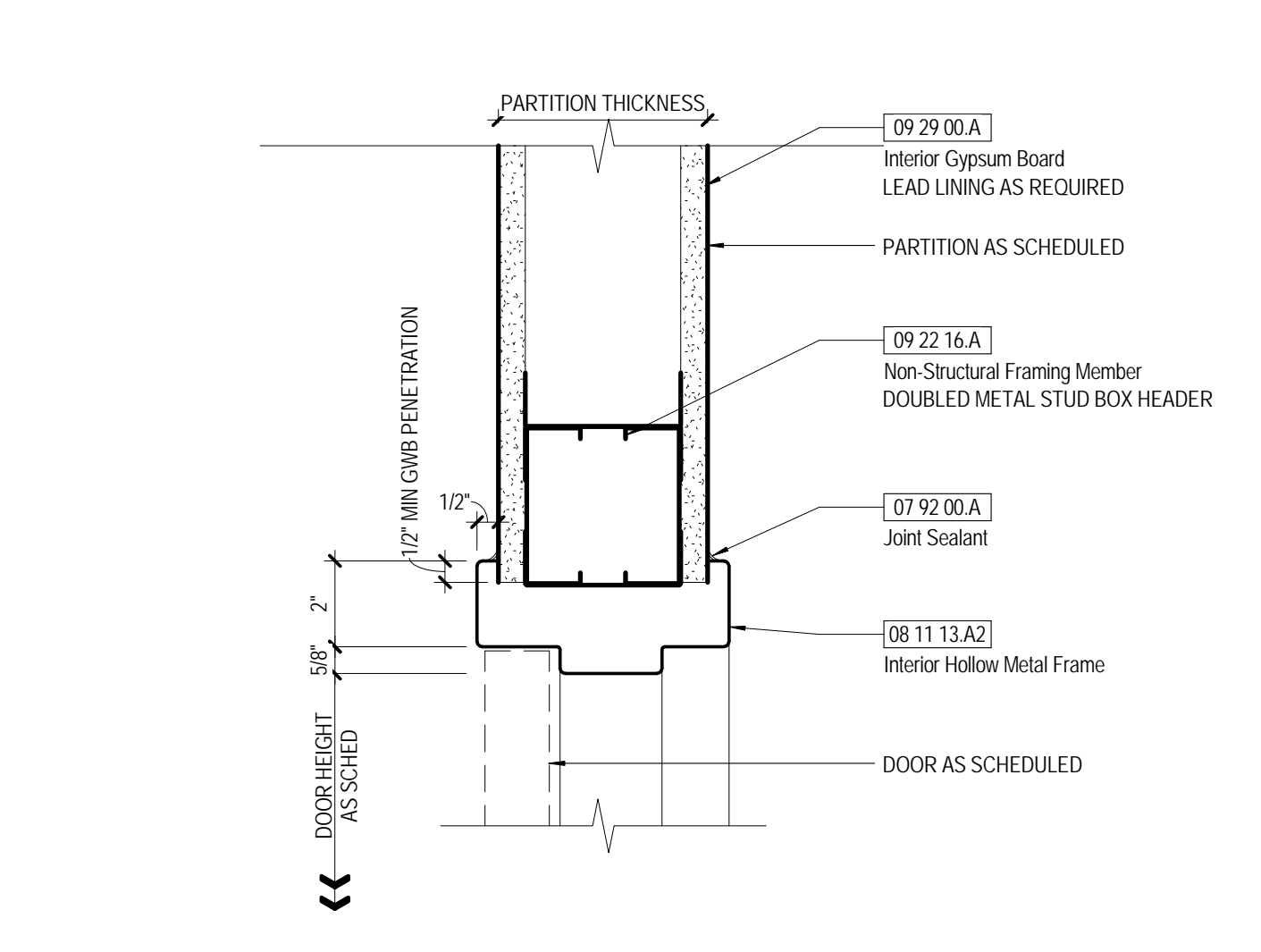
P&D & PRESSURE ANCHOR LOCATIONS TO BE PLACED TO FULLY ENGAGE STUDS AT EVERY 18" O.C.



4 NC12 - SCIF - DOOR DETAIL 01  
1 1/2" = 1'-0"



2 TYP HMF JAMB DETAIL @ GWB PARTITION  
3" = 1'-0"



1 TYP HMF HEAD DETAIL @ GWB PARTITION  
3" = 1'-0"

**PERKINS + WILL**  
225 Franklin Street, Suite 1100  
Boston, MA 02110  
1617.478.0300  
1617.478.0321  
www.perkinswill.com

**CONSULTANTS**

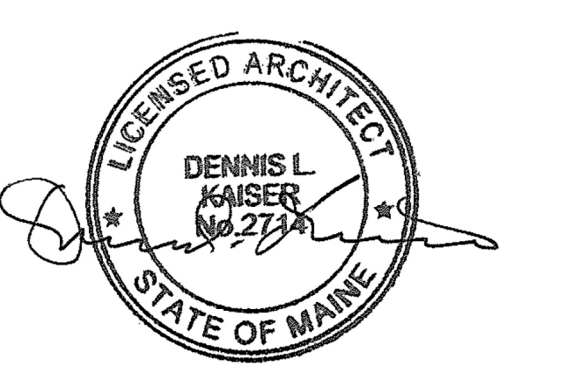
**MEP AKF**  
99 Bradford Street, 2nd Floor  
Boston, MA 02111  
1617.727.1111  
1617.727.4311

**STRUCTURAL SGH**  
41 Soyon Street, Building 1, Suite 500  
Waltham, MA  
1781.907.9000  
1781.907.9009

**PROJECT**

**MMC Cath Lab 4**  
22 Bramhall Street  
Portland, ME 04102

**Maine Medical Center**  
22 Bramhall Street  
Portland, ME 04102



**ISSUED FOR BID**  
JANUARY 15, 2016

**ISSUE CHART**

NO.	ISSUE	DATE
Job Number	152168.028	
Checked	Checker	
Approved	Approver	

**TITLE**  
**DOORS, WALLS AND FINISHES SCHEDULES AND LEGENDS**

**SHEET NUMBER**

**A62-01**

Copyright © 2015 Perkins+Will