

**DEMOLITION PLAN LEGEND**

- EXISTING PARTITION TO REMAIN
- EXISTING PARTITION TO BE DEMOLISHED
- EXISTING DOOR AND FRAME TO REMAIN
- EXISTING DOOR AND FRAME TO BE DEMOLISHED

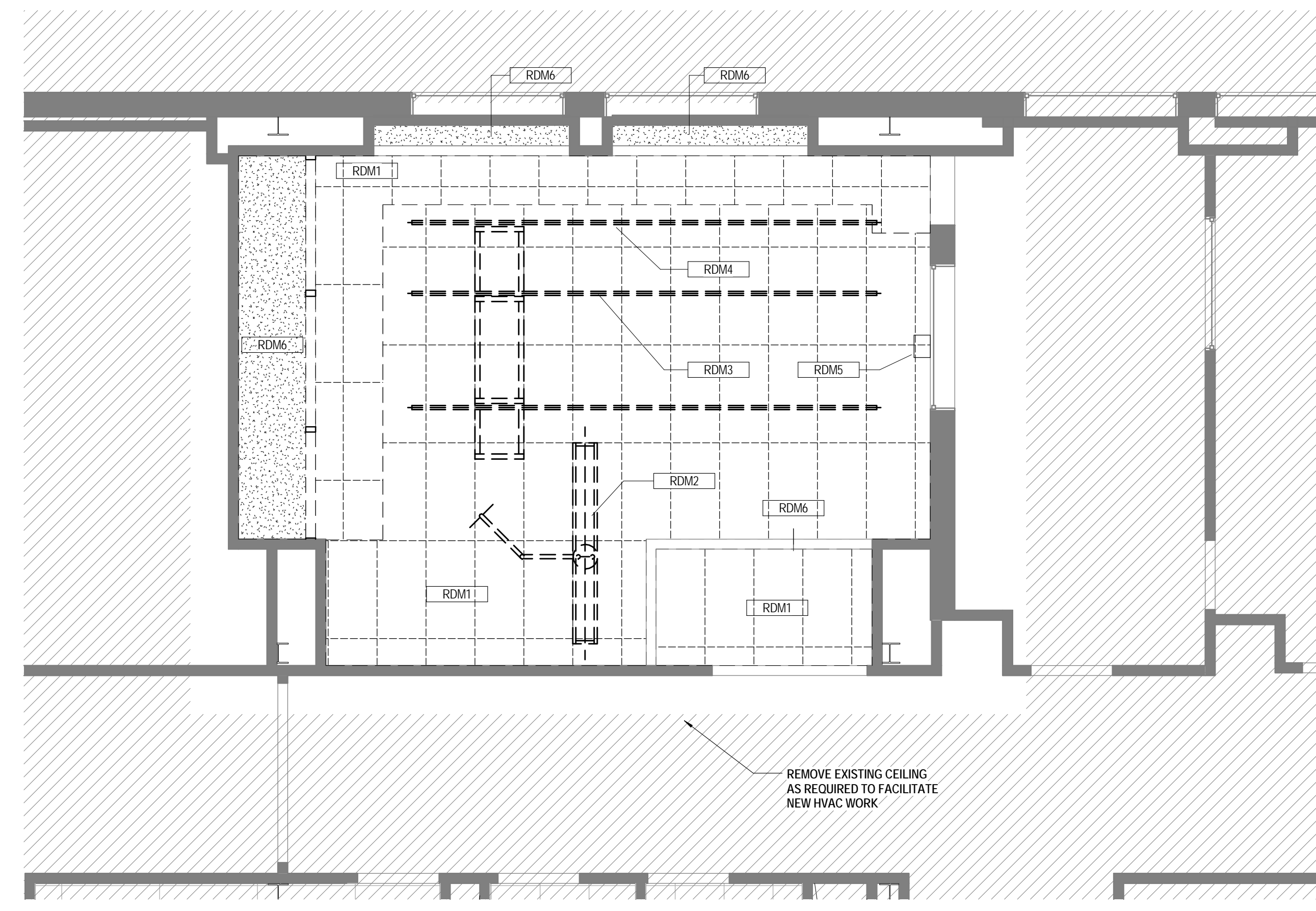
**DEMOLITION PLAN NOTES**

Demolition Plans - RCP Notes	
RDM1	REMOVE AND DISPOSE OF ALL CEILING SYSTEMS AND ASSOCIATED PARTS INCLUDING BUT NOT LIMITED TO ACT, FRAMING, CLIPS, FASTENERS, GWB, INSULATION, LIGHTING FIXTURES & DIFFUSERS. COORDINATE WITH OWNER. REFERENCE SPECS FOR ADDITIONAL SCOPE.
RDM2	REMOVE AND REUSE SHIELDING SYSTEM INCLUDING ALL ACCESSORIES.
RDM3	REMOVE AND REUSE MONITOR ARM SYSTEM INCLUDING ALL ACCESSORIES.
RDM4	REMOVE AND REUSE CABLE TRAY SYSTEM INCLUDING ALL ACCESSORIES.
RDM5	REMOVE WALL MOUNTED SPEAKER. COORDINATE REUSE WITH OWNER.
RDM6	EXISTING GWB SOFFIT TO REMAIN.

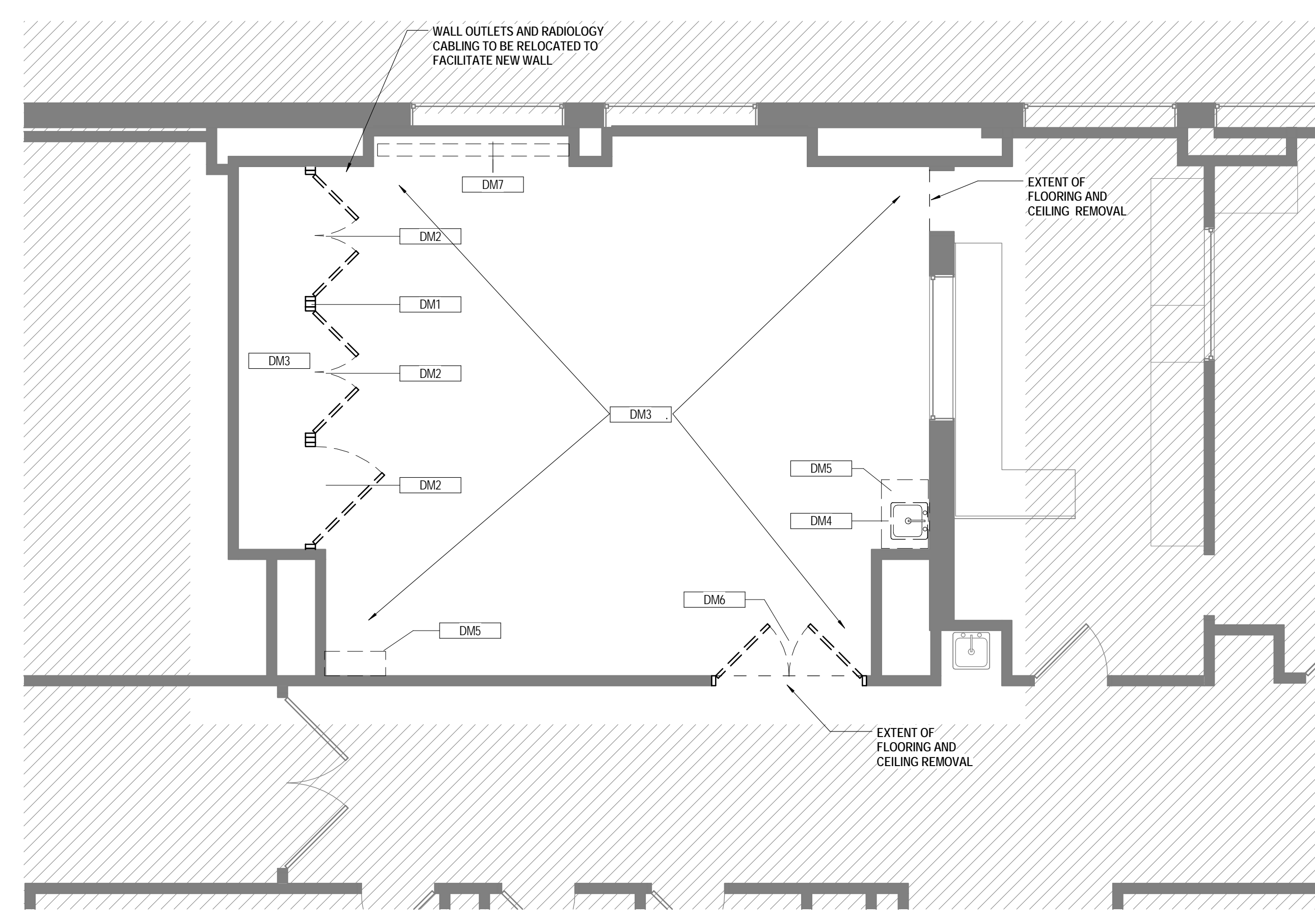
Demolition Plans - Plan Notes	
DM1	REMOVE EXISTING PARTITIONS IN THEIR ENTIRETY, INCLUDING ALL FINISHES, WALL MOUNTED FIXTURES, AND ANCHORS.
DM2	REMOVE AND DISPOSE DOOR INCLUDING FRAME, GLAZING, AND ALL OTHER ITEMS ASSOCIATED WITH OPENING INCLUDING THRESHOLDS, CARD READERS, ETC.
DM3	REMOVE AND DISPOSE OF FLOORING AND ALL ASSOCIATED MATERIALS SUCH AS MASTICS, GLUES, AND OTHER ADHESIVES. REMOVE AND DISPOSE OF ALL FLOOR TILE, GROVE BASE, ETC. GC TO COORDINATE THE PREPARATION OF EXISTING SLAB TO INCLUDE SANDING, GRINDING, AND LEVELING AS REQUIRED FOR PROPER INSTALLATION OF NEW FLOOR FINISHES.
DM4	REMOVE & DISPOSE OF EXISTING PLUMBING FIXTURES INCLUDING BUT NOT LIMITED TO TOILET, LAVATORIES, COUNTER, AND PLUMBING ACCESSORIES. REFER TO ENGINEERING DRAWINGS FOR ADDITIONAL INFORMATION.
DM5	REMOVE & DISPOSE OF CASWORK, MILLWORK, SHIELDING, HARDWARE AND/OR ACCESSORIES, INCLUDING ALL PLUMBING & ELECTRICAL.
DM6	REMOVE, REPLACE OR REFURBISH DOOR INCLUDING FRAME, GLAZING, AND ALL OTHER ITEMS ASSOCIATED WITH OPENING INCLUDING THRESHOLDS, CARD READERS, ETC. MAINTAIN RADIATION SHIELDS.
DM7	REMOVE AND RELOCATE CATHETER STORAGE SYSTEM. COORDINATE NEW LOCATION WITH OWNER.

**DEMOLITION PLAN GENERAL NOTES**

- 1 THE EXTENT OF THE DEMOLITION WORK INDICATED IN DRAWINGS AND NOTES DESCRIBE THE GENERAL SCOPE OF WORK ONLY AND ARE NOT INTENDED TO BE INCLUSIVE OF ALL THE DEMOLITION WORK WHICH MAY BE REQUIRED TO COMPLETE THE FULL SCOPE OF WORK. VERIFY ALL CONDITIONS IN THE FIELD.
- 2 EXISTING BUILDING ELEMENTS AND FIXTURES NOT INDICATED FOR REMOVAL ARE TO BE PROTECTED DURING DEMOLITION AND CONSTRUCTION AS REQUIRED. THE CONDITION OF ALL BUILDING FINISHES NOT TO BE ALTERED OR REMOVED ARE TO BE RECORDED PRIOR TO THE START OF DEMOLITION AND CONSTRUCTION.
- 3 SCHEDULE AND OBTAIN APPROVAL OF THE OWNER, UTILITIES AND LOCAL AGENCIES HAVING AUTHORITY PRIOR TO BEGINNING DEMOLITION WORK.
- 4 ALL DEMOLITION DEBRIS IS TO BE PLACED IN DUMPSTERS, COVERED, WETTED AND SECURED AS REQUIRED BY MUNICIPAL ORDINANCES PRIOR TO DISPOSAL. COORDINATE AND OBTAIN OWNERS APPROVAL FOR THE LOCATION OF DUMPSTER(S).
- 5 EXISTING MECHANICAL, ELECTRICAL AND PLUMBING SERVICES NOTED FOR REMOVAL ARE TO BE REMOVED IN THEIR ENTIRETY. PATCH FLOOR OR WALL PENETRATIONS SMOOTHLY AND FLUSH TO FORM A STRUCTURAL PATCH.
- 6 ALL PARTITIONS INDICATED TO BE REMOVED ARE TO BE COMPLETELY REMOVED FROM FLOOR DECK TO UNDERSIDE OF STRUCTURE.
- 7 FIRE PROTECTION SYSTEM ON FLOOR TO REMAIN ACTIVE DURING CONSTRUCTION. COORDINATE WITH OWNER FOR ANY INTERIM LIFE SAFETY REQUIREMENTS.
- 8 THE EXISTING STRUCTURE INCLUDING BUT NOT LIMITED TO COLUMNS, BEAMS AND FLOORS ARE NOT TO BE ALTERED OR DAMAGED DURING DEMOLITION OR CONSTRUCTION, EXCEPT WHERE INDICATED IN THE DRAWINGS. ANY STRUCTURAL ELEMENTS DAMAGED DURING DEMOLITION OR CONSTRUCTION ARE TO BE REPAIRED TO FULL STRUCTURAL INTEGRITY AND REQUIRED FIRE-RESISTIVE RATING BY THE CONTRACTOR AT EXPENSE.
- 9 ALL EXISTING BUILDING FINISHES, INDICATED TO REMAIN, WHICH ARE DISTURBED BY THE REQUIRED DEMOLITION ARE TO BE PATCHED AND REFINISHED TO MATCH ADJACENT CONDITIONS OR AS INDICATED IN THE FINISH SCHEDULE. PPM PATCH AND MATCH INDICATES THE FINISH SHALL BE REPAIRED TO MATCH ADJACENT FINISH.
- 10 AT THE CONCLUSION OF THE DEMOLITION WORK, REMOVE ALL DEBRIS AND SURPLUS MATERIALS AND LEAVE WORK AREA READY TO RECEIVE NEW WORK FINISHES.
- 11 PROVIDE DUST PROTECTION DURING CONSTRUCTION.
- 12 COORDINATE ITEMS FOR SALVAGE WITH OWNER.



**2 RCP - DEMO**  
1/4" = 1'-0"

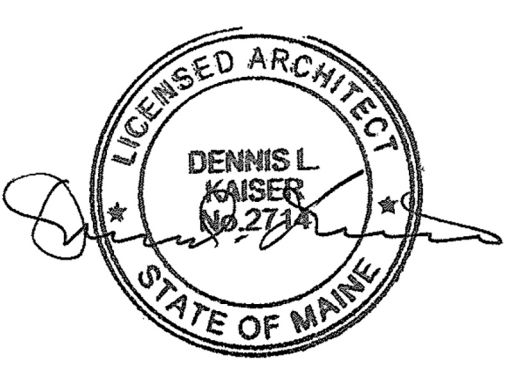


**1 PLAN - DEMO**  
1/4" = 1'-0"

**PROJECT**

**MMC Cath Lab 4**  
22 Bramhall Street  
Portland, ME 04102

**Maine Medical Center**  
22 Bramhall Street  
Portland, ME 04102



**ISSUED FOR BID**  
JANUARY 15, 2016

**ISSUE CHART**

NO.	ISSUE	DATE
Job Number		152168.028
Checked	Checker	
Approved	Approver	

**DEMOLITION PLAN AND RCP**

**SHEET NUMBER**

**A04-01**