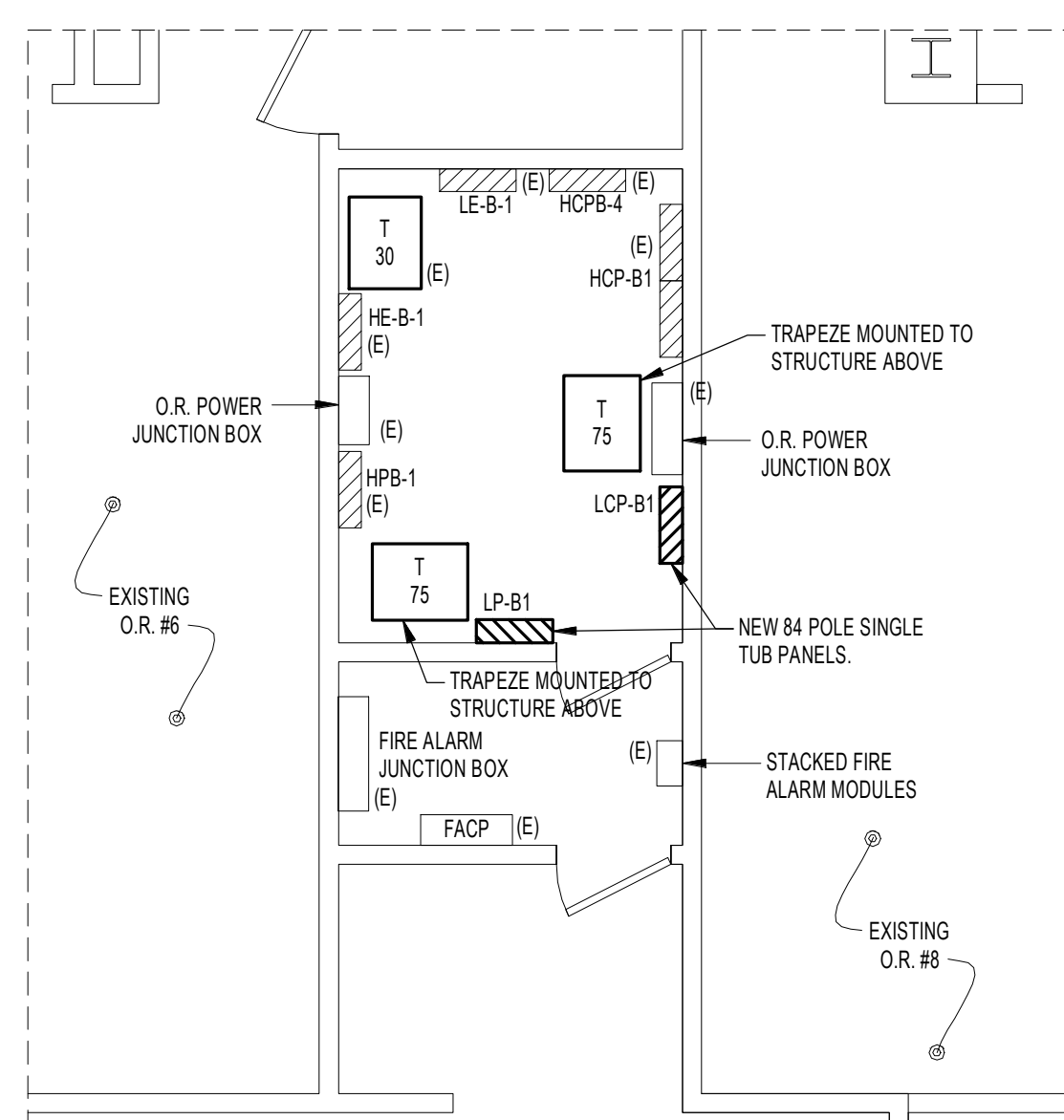
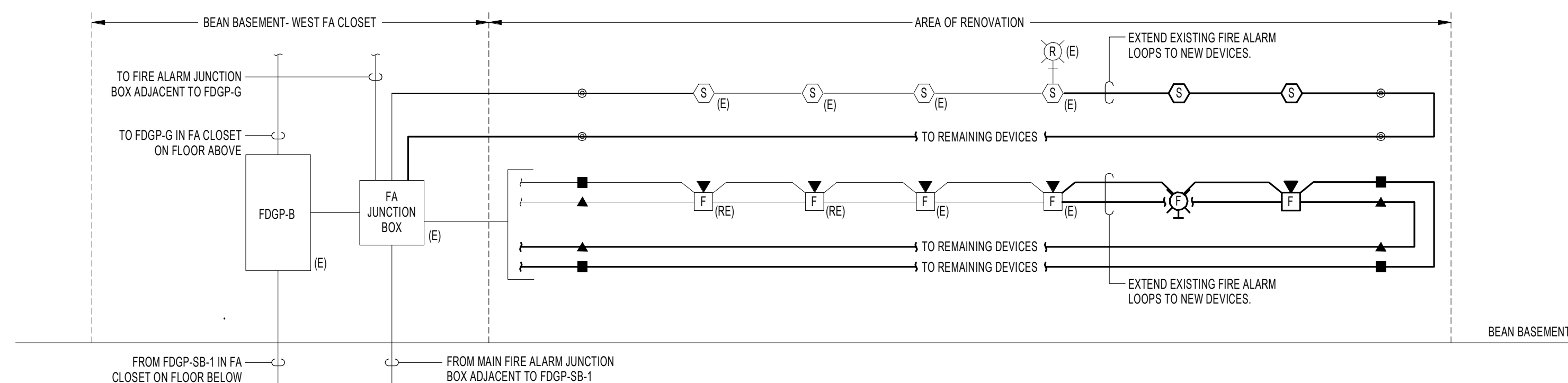


5 ELECTRIC ROOM DEMOLITION POWER PART PLAN
SCALE: 1/4" = 1'-0"



4 ELECTRIC ROOM NEW WORK POWER PART PLAN
SCALE: 1/4" = 1'-0"

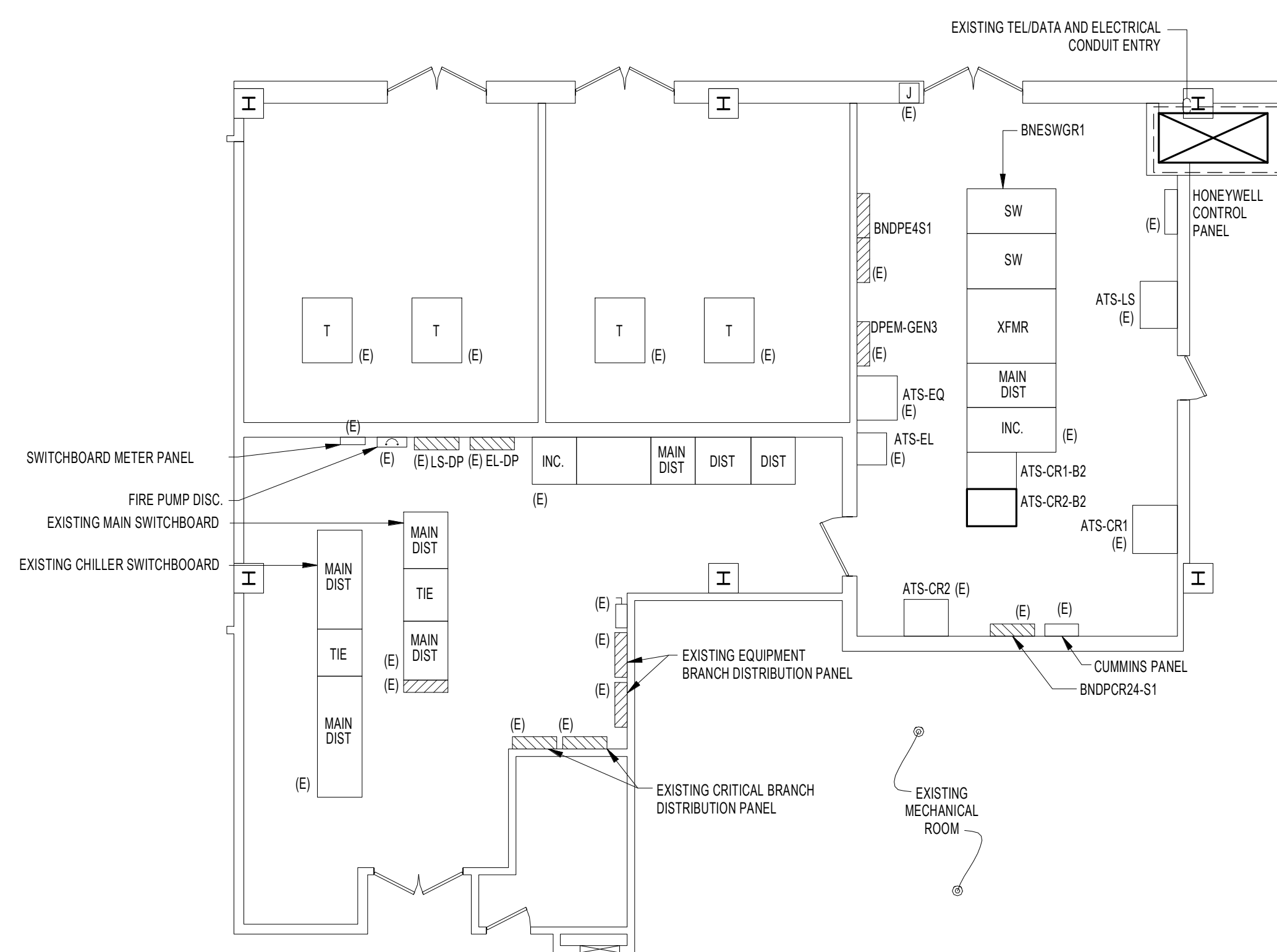


RISER DIAGRAM NOTES:

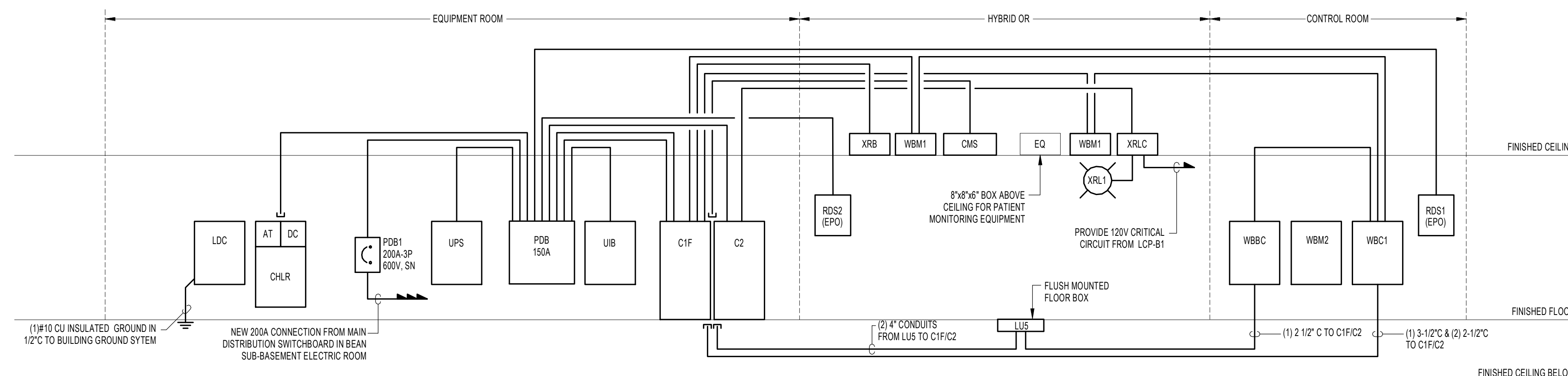
1 PARTIAL FIRE ALARM RISER DIAGRAM
SCALE: NTS

FIRE ALARM WIRING LEGEND:

- CLASS 'A' ADDRESSABLE SIGNAL CIRCUIT
- CLASS 'A' AUDIO EVAC. CIRCUITS
- CLASS 'A' STROBE/HANDICAP LIGHT
- INDICATES CONTINUATION OF WIRING TYPE



6 EXISTING BEAN SUB-BASEMENT ELECTRIC ROOM PART PLAN
SCALE: NTS



EQUIPMENT DIAGRAM GENERAL NOTES:

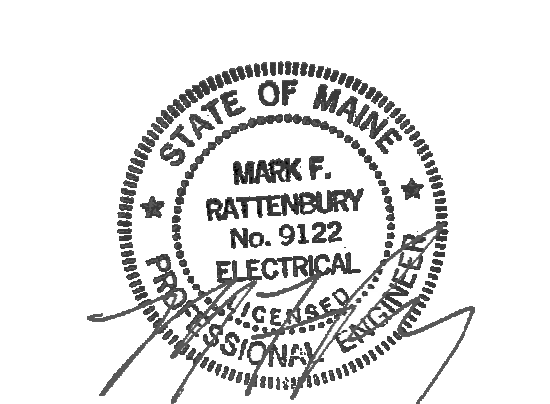
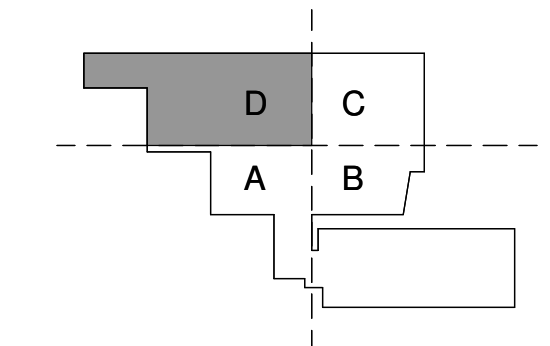
1. ADDITIONAL REQUIREMENTS ARE SHOWN ON SITE SPECIFIC EQUIPMENT GE INSTALLATION DRAWINGS. CONTRACTOR SHALL PROVIDE AND INSTALL ITEMS, INCLUDING ALL WIRING, RACEWAYS, LIGHTS, INTERLOCKS, CABLING, CABLE TRAY, ETC. AS INDICATED ON THE EQUIPMENT VENDOR'S DRAWINGS. WORK ON VENDOR DRAWINGS SHALL BE COORDINATED BY THE ELECTRICAL CONTRACTOR AND INCLUDED IN ADDITION TO WORK, DEVICES, WIRING, ETC. AS SHOWN ON THESE DRAWINGS.

2 ELECTRICAL HYBRID OR EQUIPMENT DIAGRAM
SCALE: NTS

EQUIPMENT DIAGRAM LEGEND:

- AT - COOLUX 4100 AUTO TRANSFORMER
- DC - DETECTOR CHILLER
- EQ - ATLAS EQUIPMENT CABINET
- CIF - ATLAS EQUIPMENT CABINET
- UIB - UPS INTERFACE BOX
- LUS - INNOVA IQ TABLE
- LDC - UPS
- UPS - UPS CABINET
- CMS - CABLE MANAGEMENT SYSTEM
- CHL - COOLUX 4100 WATER CHILLER
- RDS1 - EMERGENCY POWER OFF BUTTON (EPO)
- RDS2 - EMERGENCY POWER OFF BUTTON (EPO)
- XRL - 7" DAY ON WARNING LIGHT
- XRLC - WARNING LIGHT CONTROLLER
- WBC1 - OPERATORS CONSOLE
- WBC2 - UPS/UPS CHASE HAND SWITCH
- WBM1 - VENDOR BOOM WITH LAMP / MONITOR
- WBM2 - 19" DESK TOP MONITOR

INFORMATION SHOWN FOR REFERENCE ONLY. COORDINATE ALL REQUIREMENTS WITH VENDOR INSTALLATION DRAWINGS. REFER TO EQUIPMENT DIAGRAM GENERAL NOTES FOR ADDITIONAL INFORMATION.



Revisions

NO.	ISSUE	DATE
1	ADDENDUM 1	08.21.2015
1	ISSUED FOR BID	07.31.2015
NO.	ISSUE	DATE

Sheet Information	
Date	JULY 31, 2015
Job #	B150155-000
Drawn	GN
Checked	MR
Approved	MR

ELECTRICAL SCHEDULES AND RISER DIAGRAMS SHEET 2 OF 2

8/21/2015 10:54:34 AM C:\Revit Local Files\B150155-000 - MMIC NEW HYBRID OR - MEP14_Central_0704.rvt