

DRAWING NOTES:

1. REFER TO DRAWING E00-01 FOR LEGEND, SYMBOLS, ABBREVIATIONS, AND ADDITIONAL GENERAL NOTES.

**PERKINS
+ WILL**

225 Franklin St., Suite 1100
Boston, MA 02110
617.478.0360
617.478.0321
www.perkinswill.com

**Maine Medical Center
MaineHealth**

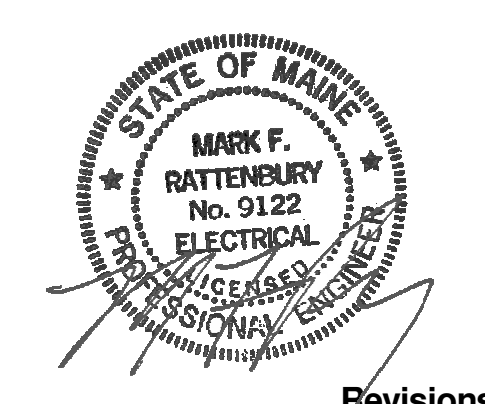
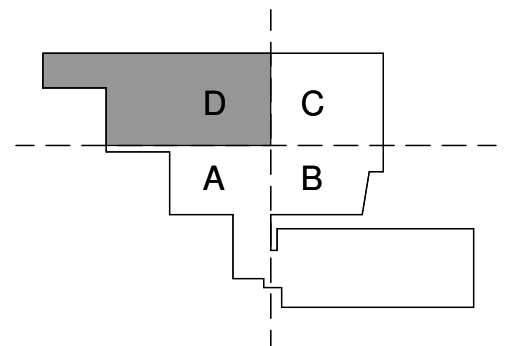
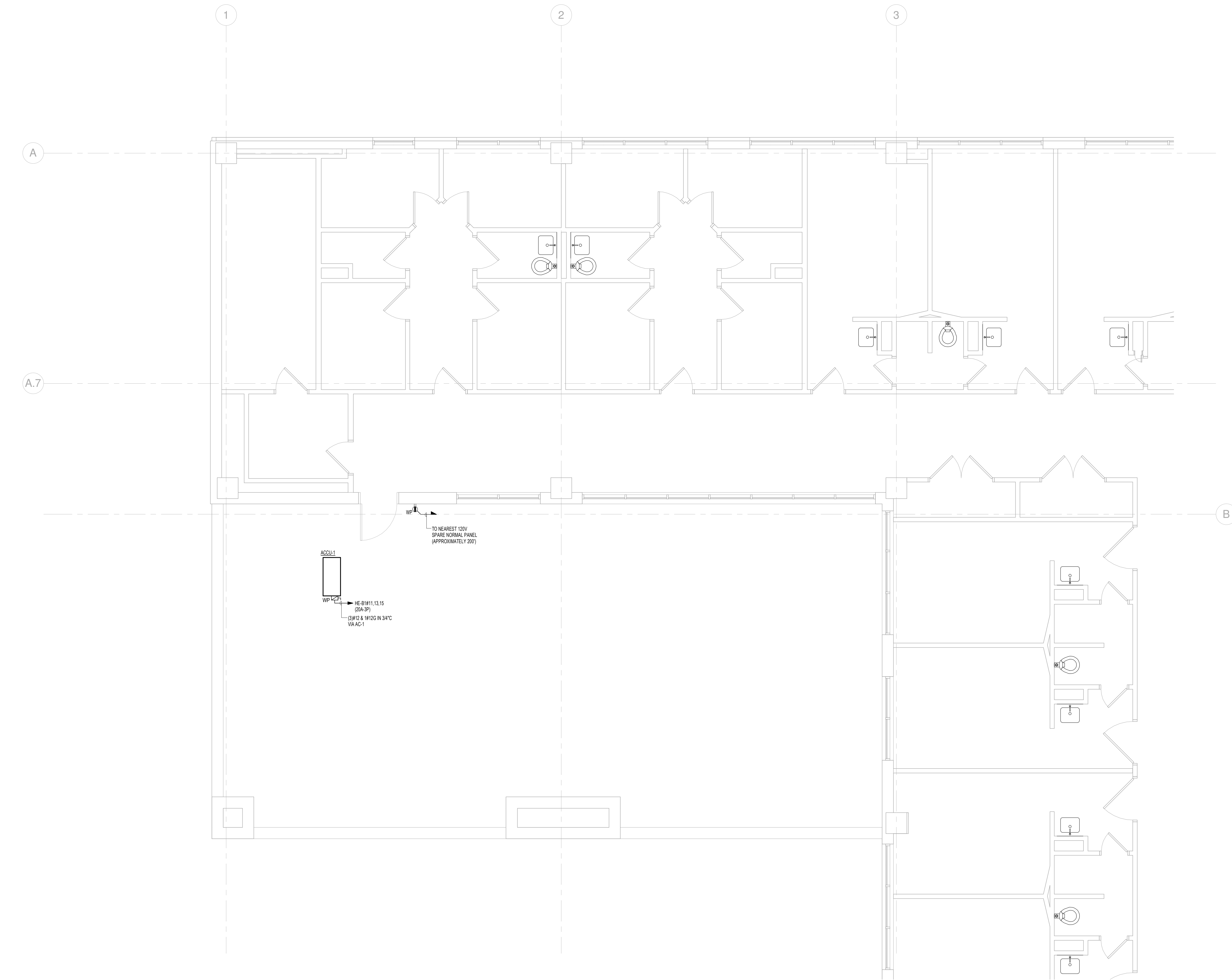
**HYBRID OR &
OR #6**
22 Bramhall Street, Portland, Maine 04102

MEP ENGINEER
AKF GROUP, LLC

99 Bedford Street, 2nd Floor
Boston, MA 02111
617.737.1111
617.737.4311

STRUCTURAL ENGINEER
SIMPSON GUMPERTZ &
HEGER

41 Seyon Street, Building 1, Suite 500
Waltham, MA 02453
781.907.9000
781.907.9099



Revisions

ISSUED FOR PERMIT	08.21.2015
1 ADDENDUM 1	08.21.2015
ISSUED FOR BID	07.31.2015
NO	ISSUE DATE

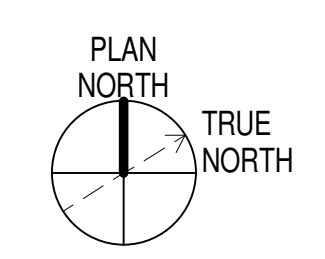
Sheet Information

Date: JULY 31, 2015
Job #: B150155-000
Drawn: GN
Checked: MR
Approved: MR
Title:

**ELECTRICAL
LEVEL 2 POWER
PLAN**

Sheet

E04-02



1 ELECTRICAL LEVEL 2 POWER PLAN
SCALE: 1/4" = 1'-0"