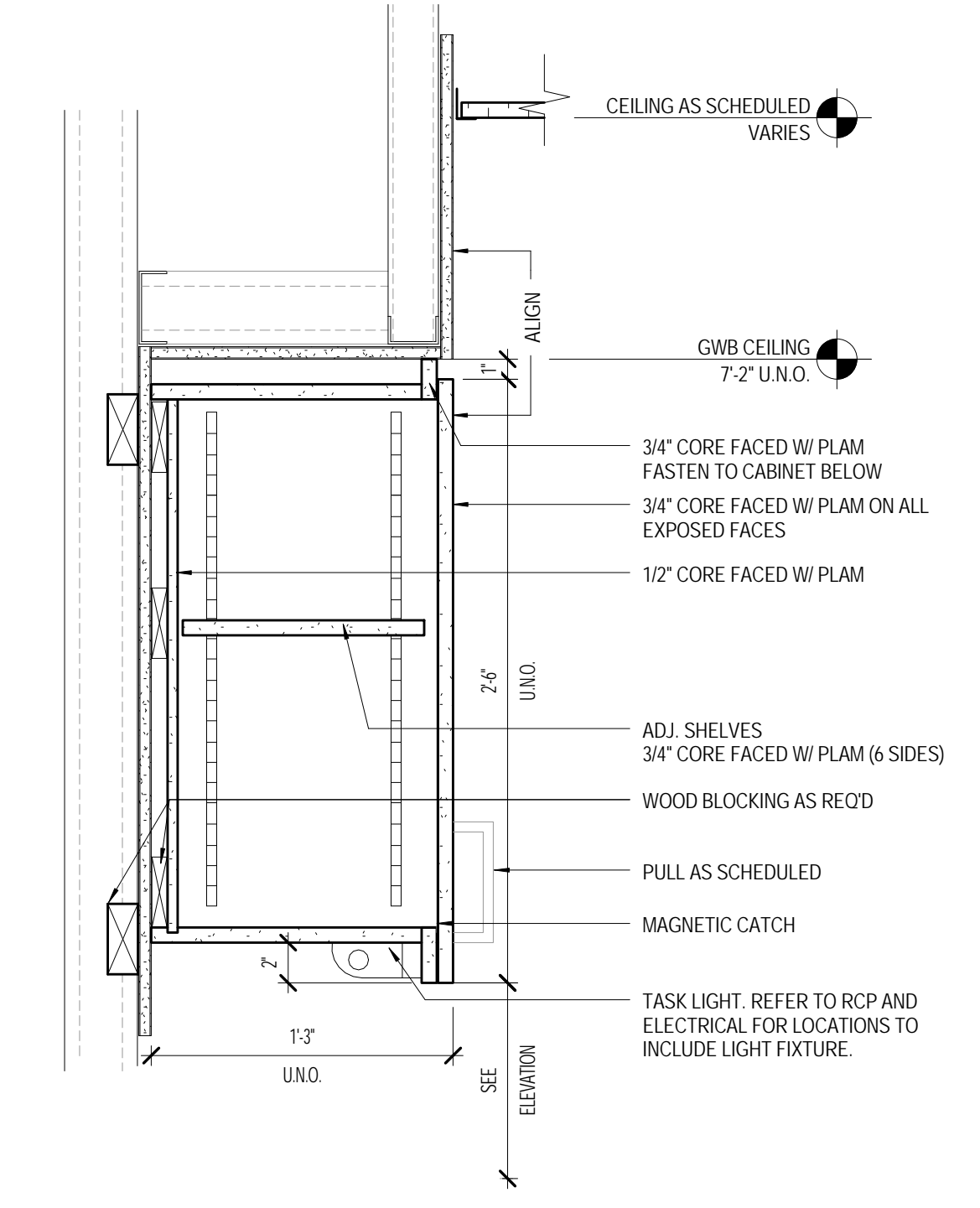


**HYBRID OR &
OR #6**
22 Bramhall Street, Portland,
Maine 04102

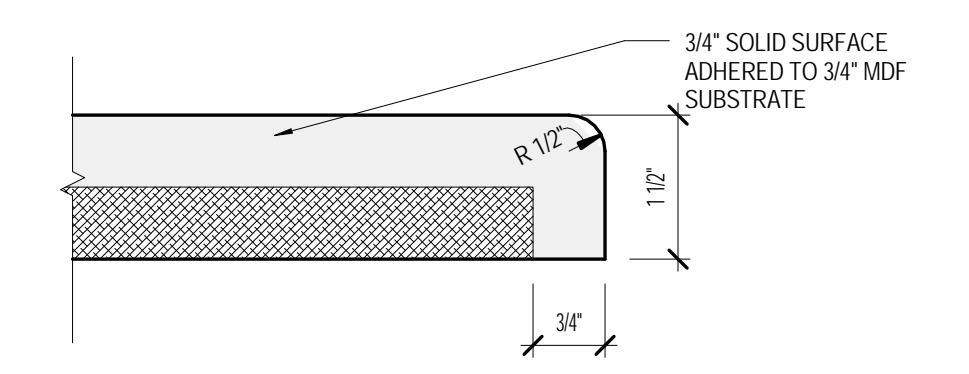
MEP ENGINEER
AKF ENGINEERS

41 Farnsworth Street, 3rd Floor
Boston, MA 02210
1 617 737 1111
1 617 737 4311

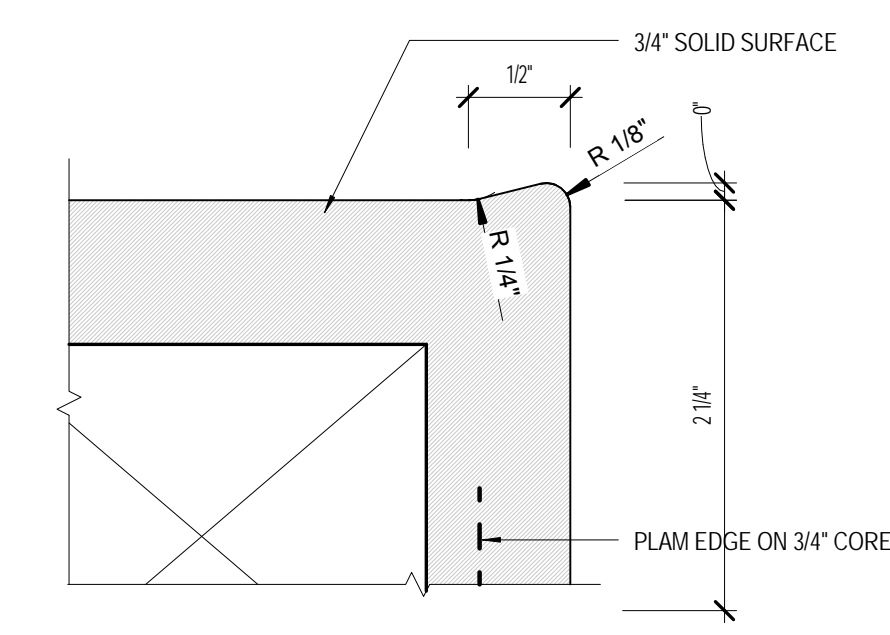
STRUCTURAL ENGINEER
SIMPSON GUMPERTZ &
HEGER
41 Sejon Street, Building 1, Suite 500
Waltham, MA 02453
1 781 907 9000
1 781 907 9099



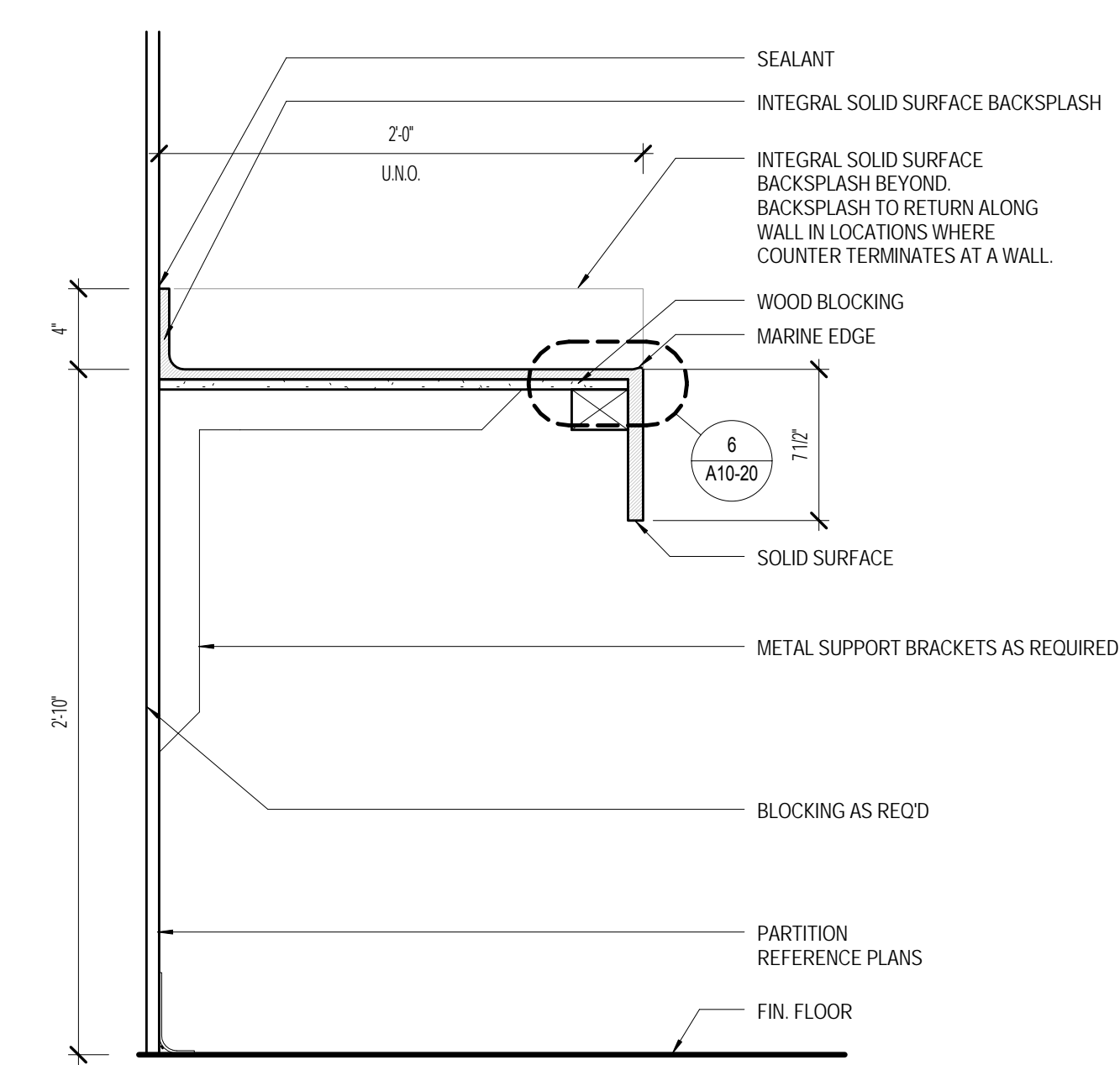
5 WALL CABINET
1 1/2" = 1'-0"



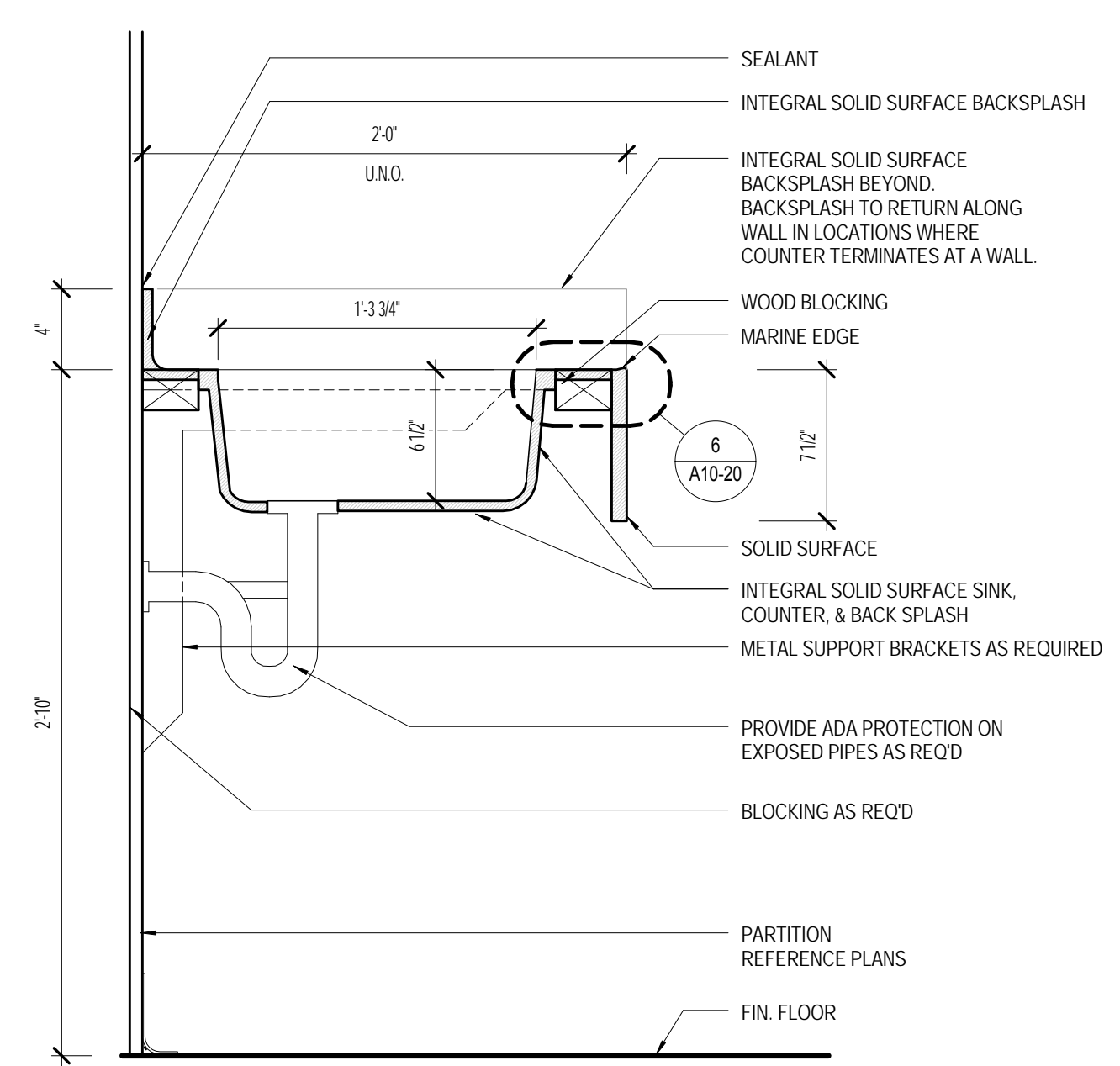
7 WORK SURFACE EDGE DETAIL
6" = 1'-0"



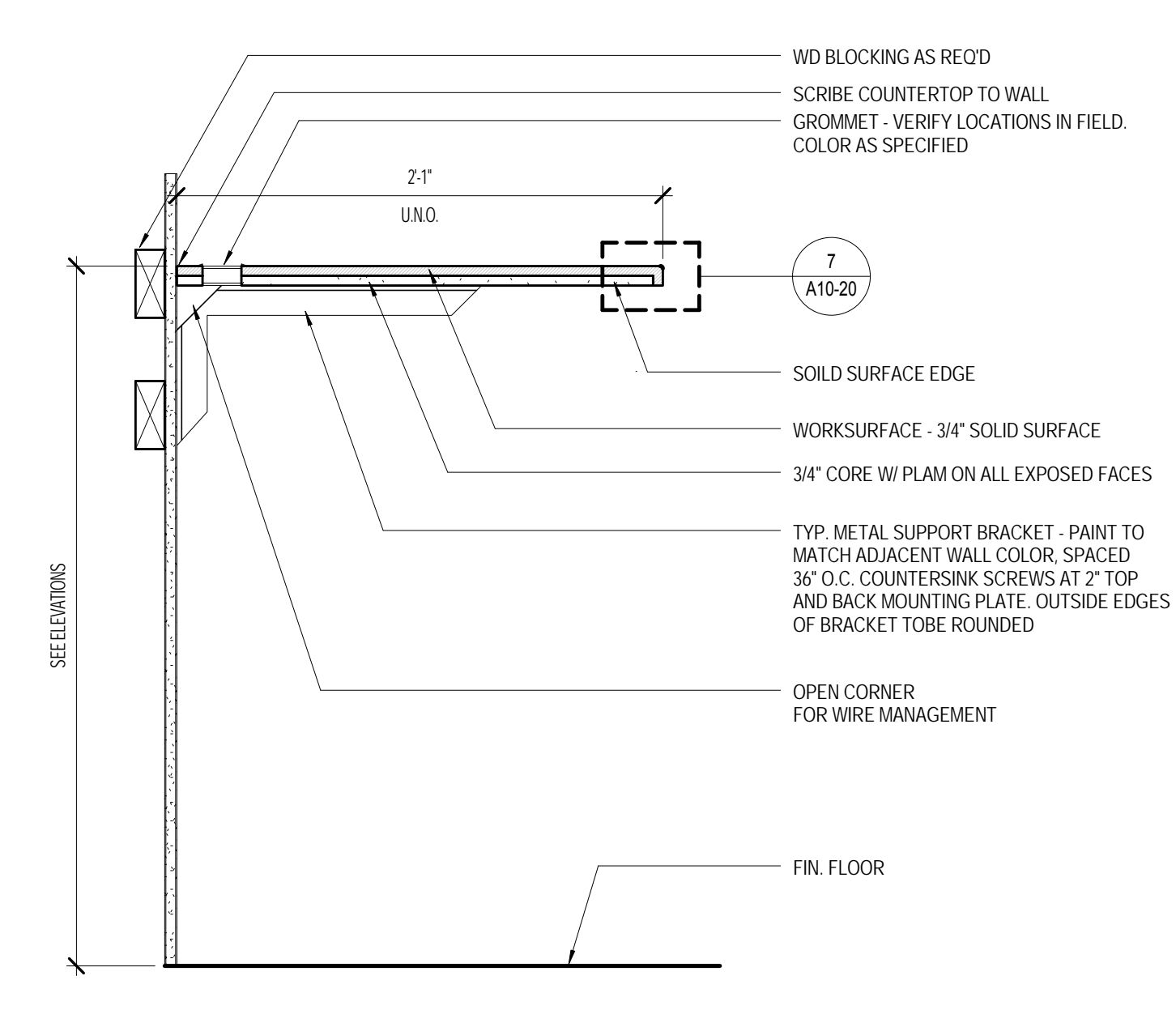
6 SOLID SURFACE MARINE EDGE
12" = 1'-0"



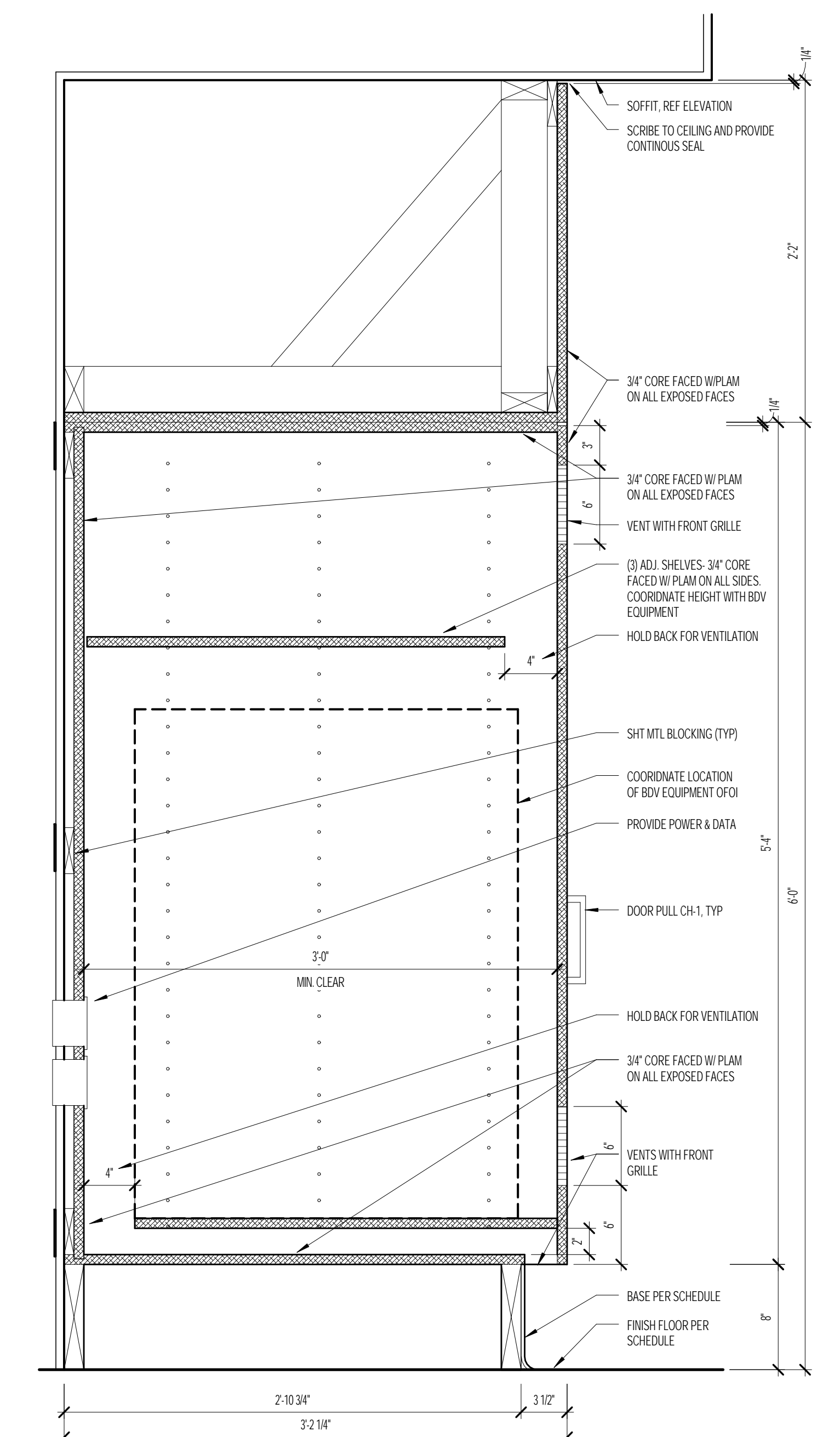
4 SOLID SURFACE TYPICAL SINK COUNTER
1 1/2" = 1'-0"



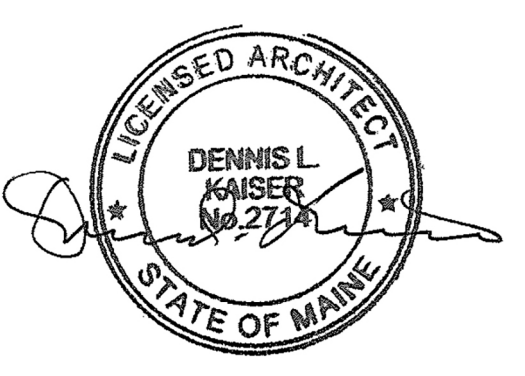
3 COUNTER W/ INTEGRAL SINK - RECTANGLE
1 1/2" = 1'-0"



2 COUNTER W/OUT BASE CABINET - SOLID SURFACE
1 1/2" = 1'-0"



1 CLOSET W/ ADJUSTABLE SHELVES
1 1/2" = 1'-0"



Revisions

ISSUED FOR PERMIT	08.21.2015
1 Addendum 1	08.21.2015
ISSUED FOR BID	07.31.2015
NO ISSUE	DATE
Sheet Information	
Date	AUGUST 21, 2015
Job #	152168.023
Drawn	Author
Checked	Checker
Approved	Approver
Title	
MILLWORK DETAILS	
Sheet A10-20	

Sheet A10-20