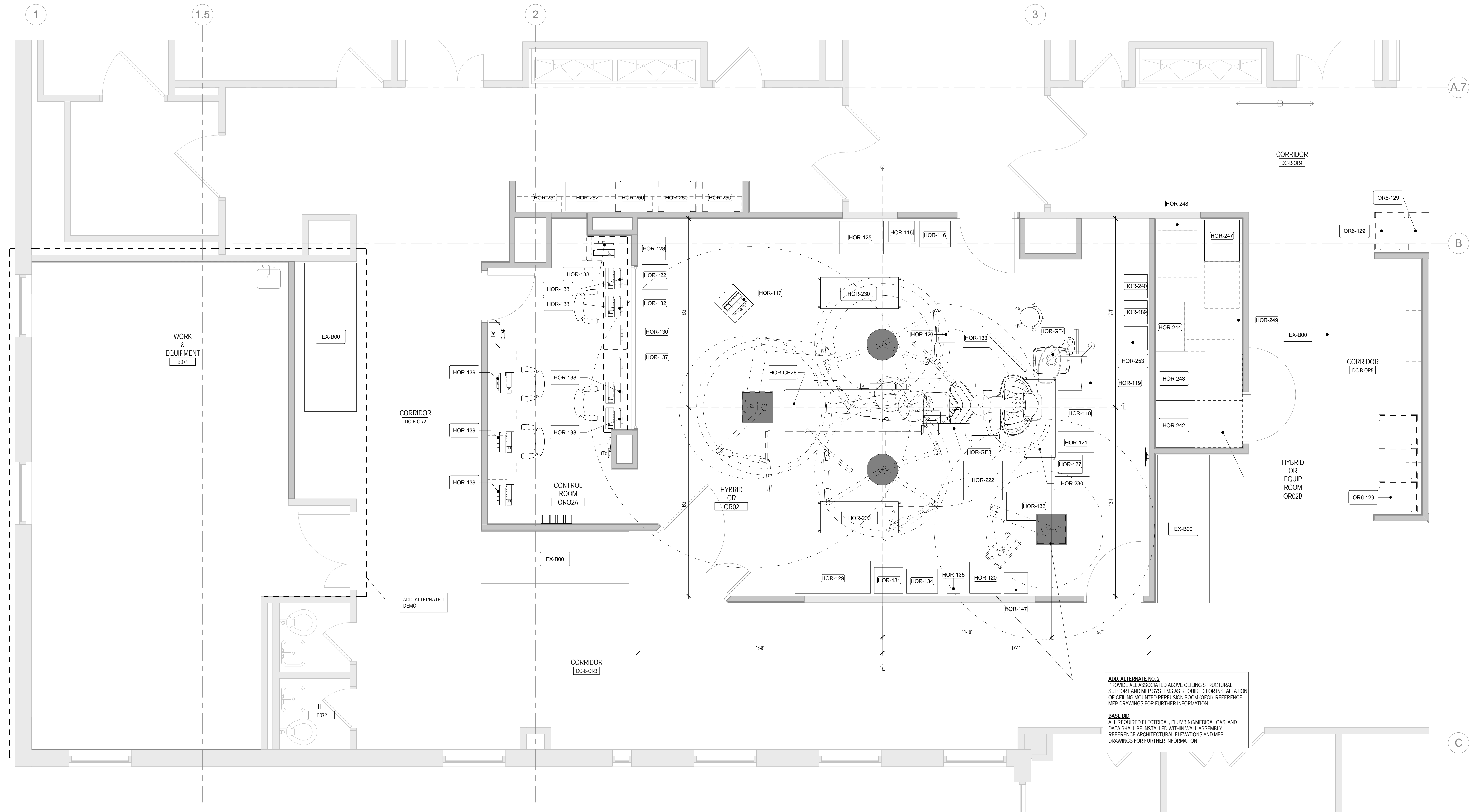


EQUIPMENT SCHEDULE						
ID	Equipment Name	Dimensions	Plumbing	Emergency Power	Normal Power	Comments
HOR-GE3	DISCOVERY IGS POSITIONER			Yes		
HOR-GE4	CMS			Yes		
HOR-250	SUPPLY CART					
HOR-125	TAVR CART	34" x 25" x 88"H				
HOR-128	LAUNDRY	18" x 18" x 38"H				
HOR-115	NESTING TABLES	20" x 16" x 35"H				
HOR-132	CATH LAB- SONOSITE	20" x 21" x 45"H				
HOR-130	BALLOON PUMP	23" x 16" x 31"H				
HOR-137	POWER INJECTOR					
HOR-116	LARGE GOWN TABLE	24" x 20" x 37"H				
HOR-117	NURSE WORKSTATION	20" x 22" x 63"H				
HOR-122	MEDIUM S.S. TABLES	20" x 16" x 34"H				
HOR-133	DEFIBRILLATOR	20" x 16" x 38"H				
HOR-123	HEADLIGHT	14" x 12" x 47"H				
HOR-129	PUMP	58" x 25" x 69"H				
HOR-136	TEE MACHINE	22" x 45" x 60"H				
HOR-131	HEATER / COOLER PERFUSION	22" x 20" x 33"H				
HOR-134	BOVIE	19" x 24" x 40"H				
HOR-135	BAIR HUGGER	8" x 10" x 13"H				
HOR-120	ROLLING X-RAY	24" x 24" x 45"H				

EQUIPMENT SCHEDULE						
ID	Equipment Name	Dimensions	Plumbing	Emergency Power	Normal Power	Comments
HOR-127	MAYO STAND	14" x 19" x 48"H				
HOR-121	CELL SAVER	16" x 28" x 35"H				
HOR-118	BLUE BELL	34" x 23" x 57"H				
HOR-147	CVT / ACT	16" x 18"				
HOR-251	FRIDGE					
HOR-252	FREEZER					
HOR-GE26	OR BED					
HOR-253	MED DISPOSE					
HOR-189	DISPOSE, SHARPS, FLOOR BIN					
HOR-240	TRASH					
EX-B00	BED (EXISTING)	34" x 25" x 88"H				
EX-B00	BED (EXISTING)	34" x 25" x 88"H				
EX-B00	BED (EXISTING)	34" x 25" x 88"H				
HOR-248	DISCOVERY MAIN DISCONNECT					
HOR-247	UPS CABINET					
HOR-249	LOCAL SERVICE DISCONNECT					
HOR-244	DETECTOR CHILLER					
HOR-243	ATLAS CABINET (C1F)					
HOR-242	ATLAS CABINET (C2)					
HOR-GE26	OR BED					



PERKINS + WILL

225 Franklin St., Suite 1100
Boston, MA 02110
617.438.0300
617.438.0521
www.perkinswill.com



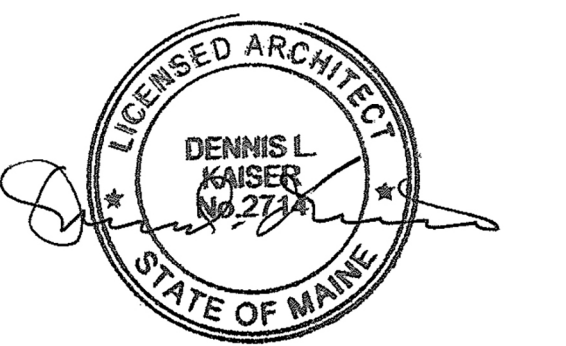
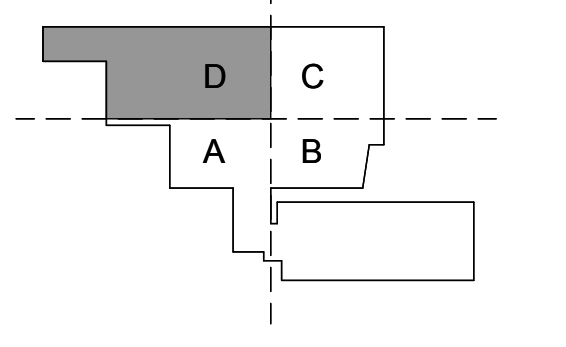
HYBRID OR & OR #6
22 Bramhall Street, Portland, Maine 04102

MEP ENGINEER
AKF ENGINEERS

41 Farnsworth Street, 3rd Floor
Boston, MA 02210
617.737.1111
617.737.4311

STRUCTURAL ENGINEER

SIMPSON GUMPERTZ & HECGER
41 Sejon Street, Building 1, Suite 500
Waltham, MA 02453
1781.907.9000
1781.907.9099



Revisions

ISSUED FOR PERMIT	08.21.2015
ISSUED FOR BID	07.31.2015
NO ISSUE	DATE
Sheet Information	
Date	AUGUST 21, 2015
Job #	152168.023
Drawn	Author
Checked	Checker
Approved	Approver
Title	

HYBRID OR EQUIPMENT PLAN & FURNITURE PLAN

Sheet
A07-0B1

Copyright © 2015 Perkins+Will

NOTE:
PLAN PROVIDED FOR
COORDINATION ONLY

ADD ALTERNATE NO. 2
PROVIDE ALL ASSOCIATED ABOVE CEILING STRUCTURAL SUPPORT AND MEP SYSTEMS AS REQUIRED FOR INSTALLATION OF CEILING MOUNTED PERFUSION BOOM (CFO). REFERENCE MEP DRAWINGS FOR FURTHER INFORMATION.
BASE BID
ALL REQUIRED ELECTRICAL, PLUMBING/MEDICAL GAS, AND DATA SHALL BE INSTALLED WITHIN WALL ASSEMBLY. REFERENCE ARCHITECTURAL ELEVATIONS AND MEP DRAWINGS FOR FURTHER INFORMATION.

ADD ALTERNATE 1 DEMO

8/24/2015 1:40:06 PM
c:\temp\MMIC_NEW_HYBRID_OR_Maine.esx@perkinswill.com.plt