

**HYBRID OR &  
OR #6**

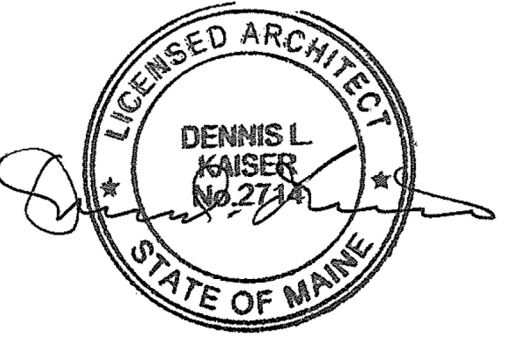
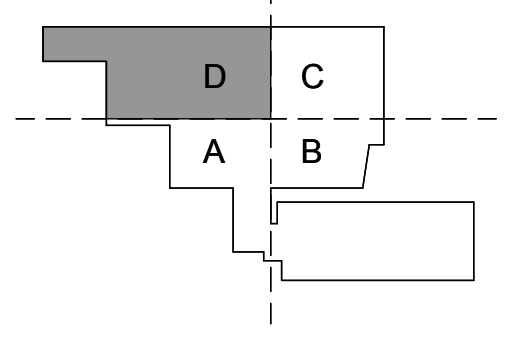
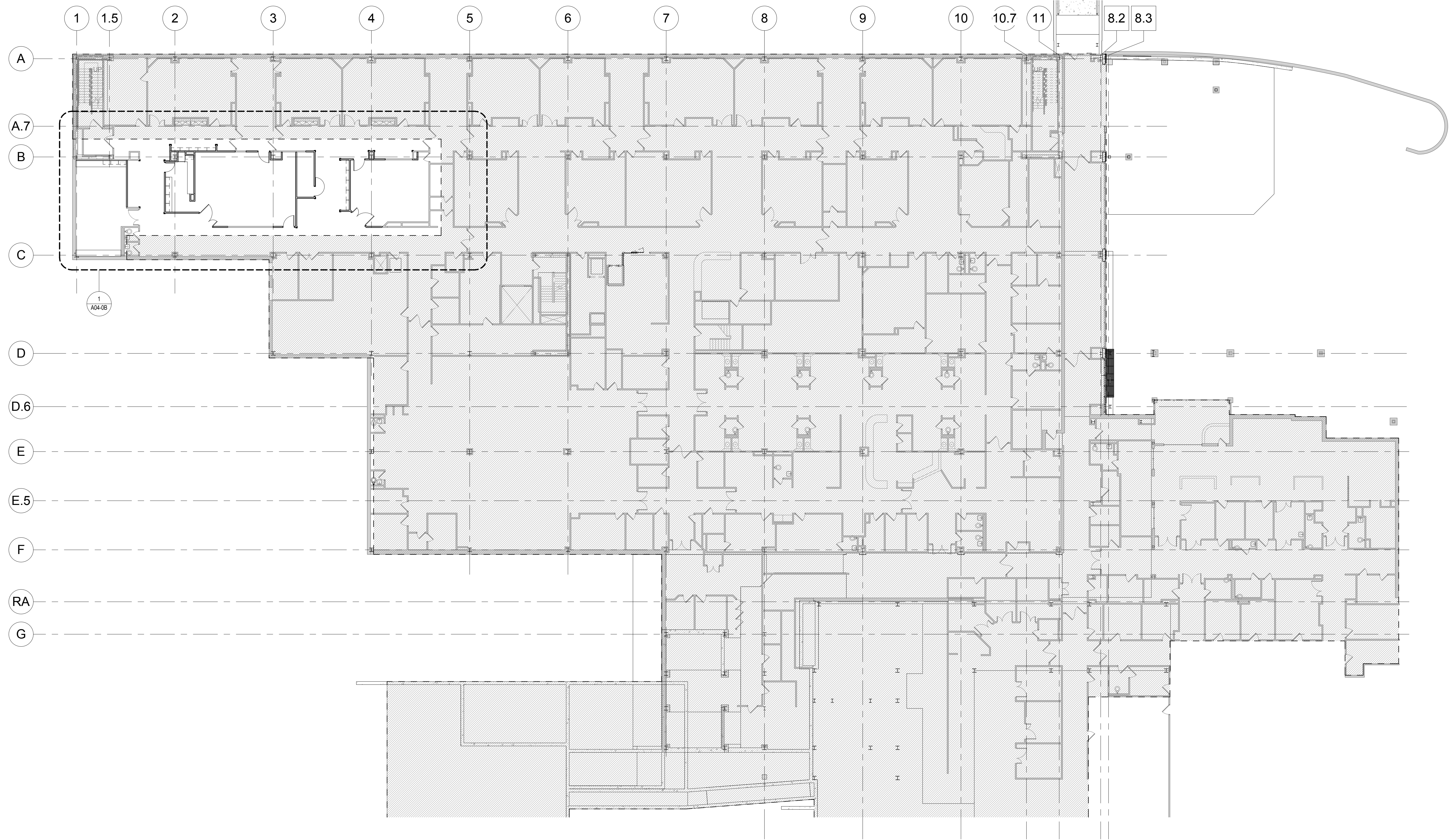
22 Bramhall Street, Portland,  
Maine 04102

MEP ENGINEER  
AKF ENGINEERS

41 Farnsworth Street, 3rd Floor  
Boston, MA 02210  
1 617 737 1111  
1 617 737 4211

STRUCTURAL ENGINEER  
SIMPSON GUMPERTZ &  
HEGER

41 Sejon Street, Building 1, Suite 500  
Waltham, MA 02453  
1 781 907 9000  
1 781 907 9099



Revisions

ISSUED FOR PERMIT	08.21.2015
ISSUED FOR BID	07.31.2015
NO ISSUE	DATE
<b>Sheet Information</b>	
Date	AUGUST 21, 2015
Job #	152168.023
Drawn	Author
Checked	Checker
Approved	Approver
Title	

**OVERALL  
BASEMENT FLOOR  
PLAN**

Sheet  
**A01-0B**

**1** BASEMENT - KEY PLAN  
1/16" = 1'-0"