

FINISH LEGEND					
TAG	MANUFACTURER	STYLE	COLOR/FINISH	SIZE	COMMENTS
ACOUSTICAL CEILING PANELS					
ACT-1	ARMSTRONG	DUNE 1775	WHITE; INTERLUDE XL HRC 9/16" EXPOSED T GRID	24"x24"	EDGE PROFILE: BEVELED TEGULAR
ACT-2	ARMSTRONG	CLEAN ROOM VL 868	WHITE; PRELUDE 15/16" EXPOSED T GRID	24"x24"	GASKET & HOLD DOWN CLIPS
CABINET FINISH					
CH-1	MOCKETT	DP128-SSS	STAINLESS STEEL FINISH	6 11/16"	SEE DETAIL FOR ORIENTATION
INTERIOR GLASS					
IGL-1	PARILUSE, LLC	MICROBLIND	WHITE BLIND IN TEMPERED IGU	THICKNESS: 1"	
IGL-2		CLEAR	TEMPERED	THICKNESS: 1/4"	
IGL-3		CLEAR	TEMPERED LEAD GLASS	THICKNESS: 1/4"	LEAD LINED
PAINT					
P-1	SHERWIN WILLIAMS	PRO-GREEN 200 LATEX	CUSTOM TO MATCH BENJAMIN MOORE SUPER WHITE PM-1		ALL WALLS U.O.N.
P-2	SHERWIN WILLIAMS	INDUSTRIAL PRE-CATALYZED WATER-BASED EPOXY	CUSTOM TO MATCH BENJAMIN MOORE WHITE DIAMOND 2121-60		
P-3	SHERWIN WILLIAMS	INDUSTRIAL PRE-CATALYZED WATER-BASED EPOXY	CUSTOM TO MATCH BENJAMIN MOORE COOL AQUA 2056-40		TOP ACCENT AT OR'S
P-4	SHERWIN WILLIAMS	INDUSTRIAL PRE-CATALYZED WATER-BASED EPOXY	CUSTOM TO MATCH BENJAMIN MOORE SURF BLUE 2056-30		TOP ACCENT AT OR'S
P-5	SHERWIN WILLIAMS	PRO-GREEN 200 LATEX	CUSTOM TO MATCH BENJAMIN MOORE SUPER WHITE PM-1 (FLAT)		TO BE FLAT FINISH. USED AT ALL CEILING SOFFITS U.O.N.
P-6	SHERWIN WILLIAMS	INDUSTRIAL PRE-CATALYZED WATER-BASED EPOXY SEMI-GLOSS	COLOR: 6469 DEWY		EXISTING AT OR CORRIDOR
PLASTIC LAMINATE					
PL-1	PIONITE	SW28-N	COLOR: SUEDE ANGEL WHITE		
PL-2	NEVAMAR	MXT003T	COLOR: SILVER ALU METALX		
RESILIENT SHEET FLOORING					
RFT-1	BY OWNER	-	-	THICKNESS: 7MM	EPOXY FLOOR BY OWNER'S VENDOR
RF-2	NORA	NORPLAN SENTICA	6526 MOUNTAIN AIR	THICKNESS: 3MM	3 COLOR PATTERN
RF-3	NORA	NORPLAN SENTICA	6527 DEEP SEA	THICKNESS: 3MM	3 COLOR PATTERN
RF-4	NORA	NORPLAN SENTICA	MATCH EXISTING ADJACENT FLOORING	MATCH EXISTING	MATCH EXISTING
SOLID SURFACE					
SS-1	DUPONT	CORIAN	GLACIER WHITE	THICKNESS: 3/4"	HORIZONTAL APPLICATION
SS-2	DUPONT	CORIAN	GLACIER WHITE	THICKNESS: 1/4"	VERTICAL APPLICATION
WALL BASE					
WB-1	BY OWNER	-	-	HEIGHT: 8"	METAL TRIM @ TOP PER MANF.
WB-2	FLASHCOVE BASE	NORPLAN SENTICA	6527 DEEP SEA	HEIGHT: 8"; THICKNESS: .125"	METAL TRIM AT TOP PER MANF.
WB-3	FLASH COVE BASE	NORPLAN SENTICA	PATCH ADJACENT BASE	PATCH EXISTING	
WALL PROTECTION					
WP-1	ACROVYN	SQUARE EDGE WALL PANEL	949 WHITE: PINSTRIPE TEXTURE	THICKNESS: .040"	4'-0" FROM TOP OF BASE; SEE ELEVATIONS
WP-2	PANOLAM	FIBER REINFORCED LAMINATE	SEE PL-1 FOR COLOR: SUEDE TEXTURE	THICKNESS: .75"	HEIGHT PER ROOM FINISH SCHEDULE/SEE ELEVATIONS
WALL PROTECTION - CORNER GUARDS					
CG-1	CORNER GUARD	INPRO CORP.	SURFACE MOUNT STAINLESS STEEL CORNER GUARD	7'-2" A.F.F.	TO 7'-2" A.F.F. U.O.N.
CG-2	CORNER GUARD	INPRO CORP.	WING WALL WRAP AROUND SURFACE MOUNT STAINLESS STEEL CORNER GUARD	7'-2" A.F.F.	TO 7'-2" A.F.F. U.O.N.
WALL PROTECTION - CRASH GUARDS					
CR-1	ICR-325 - HIDDEN FASTENERS	STAINLESS STEEL FINISH			TYPICAL CRASH GUARD

DOOR SCHEDULE													
TAG	RM NAME	RM NUM	OPENING SIZE		DOOR TYPE	FRAME				FIRE RATING	HARDWARE SET	COMMENTS	
			WIDTH	HEIGHT		MTL	FIN	DTLS	MTL				FIN
1318-A	CORRIDOR	1318	3'-6"	7'-0"	D1	HM	PT	F1	HM	PT	5/8-A00-50	1	EXTERIOR DOOR. PROVIDE THRESHOLD & WEATHERSTRIPPING
OR02-A	HYBRID OR	OR02	3'-0"	8'-0"	D8	WD	SF	F1	HM	PT	7/8-A00-50	2	LEAD LINED DOOR & FRAME. PROVIDE IGL-3
OR02-B	HYBRID OR	OR02	3'-6"	7'-0"	D14	WD	SF	F1	HM	PT	7/8-A00-50	SR	LEAD LINED DOOR & FRAME. PROVIDE IGL-3
OR02-C	HYBRID OR	OR02	3'-6"	7'-0"	D14	WD	SF	F1	HM	PT	7/8-A00-50	SR	LEAD LINED DOOR & FRAME. PROVIDE IGL-3
OR06-A	OR #6	OR06	6'-0"	8'-0"	D8	WD	SF	F1	HM	PT	5/8-A00-50	SR	2
OR06-B	OR #6	OR06	3'-6"	7'-0"	D14	WD	SF	F1	HM	PT	5/8-A00-50	SR	3
OR06-C	OR #6	OR06	2'-6"	7'-0"	Exst	-	-	-	-	-	-	-	EXISTING DOOR TO REMAIN
OR02A-A	CONTROL ROOM	OR02A	3'-0"	7'-0"	D14	WD	SF	F1	HM	PT	5/8-A00-50	SR	3
OR02B-A	HYBRID OR EQUIP ROOM	OR02B	3'-0"	7'-0"	D1	WD	SF	F1	HM	PT	5/8-A00-50	SR	5

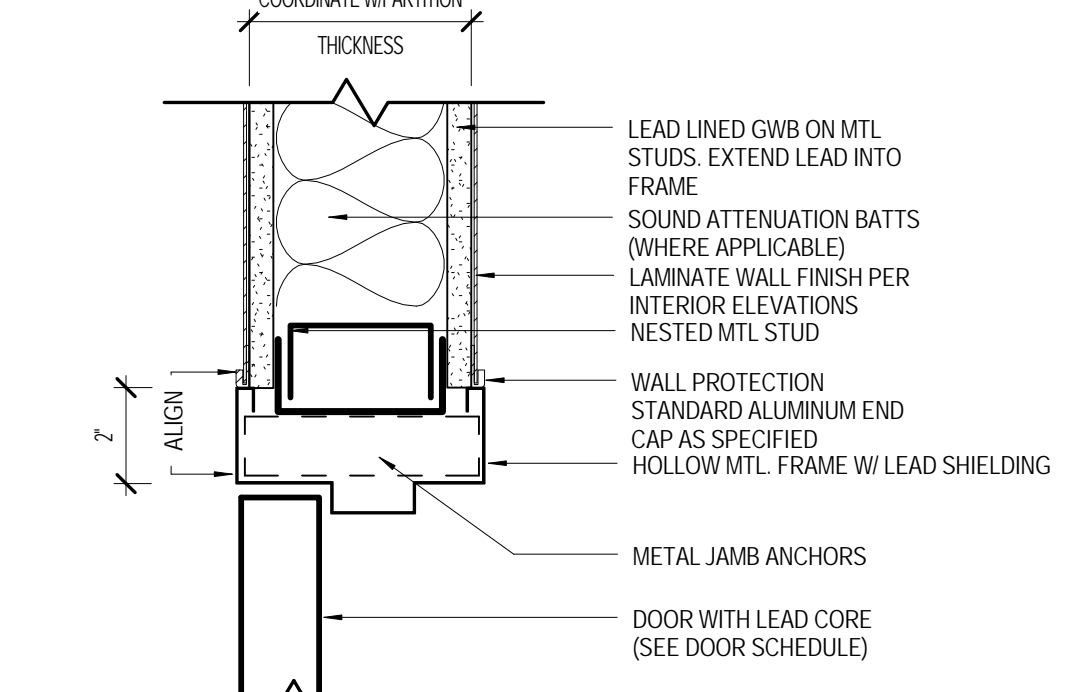
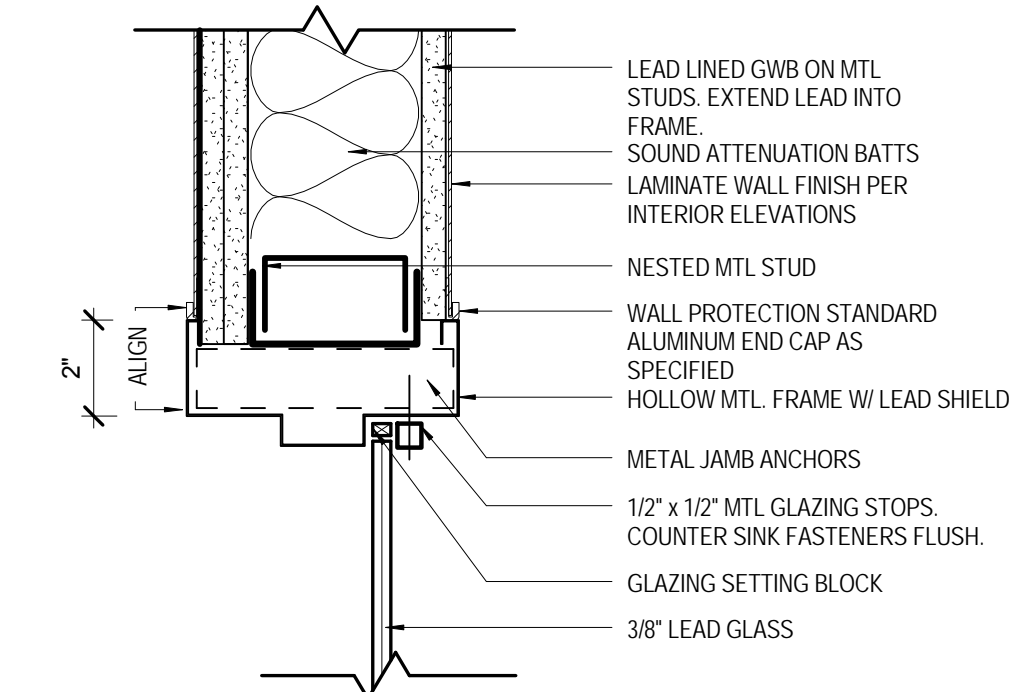
FINISH SCHEDULE						
ROOM NUMBER	ROOM NAME	FLOOR FINISH	BASE MATL	WALL FINISH	WALL PROTECTION	CEILING FINISH
DC-B-OR1	CORRIDOR	RF-4	RB-2	P-6	CG-1	EXIST:GWB
DC-B-OR2	CORRIDOR	RF-4	RB-2	P-6	CG-1	EXIST:ACT-2
DC-B-OR3	CORRIDOR	RF-4	RB-2	P-4	CG-1	EXIST:ACT-2
DC-B-OR4	CORRIDOR	RF-4	RB-2	P-4	CG-1	EXIST:GWB
DC-B-OR5	CORRIDOR	RF-4	RB-2	P-6	CG-1	ACT-2:EXIST
OR02	HYBRID OR	EPX-1	EPB-1	P-2, P-3, P-4	-	GWB
OR02B	HYBRID OR EQUIP ROOM	RF-2	RB-1	P-2	ACT-2	PROVIDE MODULAR CEILING SYSTEM. ADD ALT. No.3
OR06	OR #6	RF-2, RF-3	RB-1	P-2, P-3, P-4	-	GWB
OR02A	CONTROL ROOM	RF-2	RB-1	P-2	-	ACT-2
SS01	SUB-STERILE	-	-	-	-	PATCH TO MATCH EXIST. FOR ANY DAMAGED FINISHES

DOOR SCHEDULE  
GENERAL NOTES

- ALL DOORS IN SMOKE RESISTANT PARTITIONS TO HAVE POSITIVE LATCHING.
- FIRE RATING GLAZING IN DOORS SHALL MEET THE FIRE RATING REQUIREMENT OF THE DOORS TO WHICH THEY ARE INSTALLED.
- "SWING CLEAR" HINGES SHALL BE PROVIDED AT ALL OPERATING ROOM AND PROCEDURE ROOM DOORS.
- ALL DOORS TO HAVE BORED HEADERS UNLESS STEEL CHANNELS ARE INDICATED IN THE REMARKS COLUMN OF THE DOOR SCHEDULE OR UNLESS OTHERWISE INDICATED BY HEAD DETAIL.

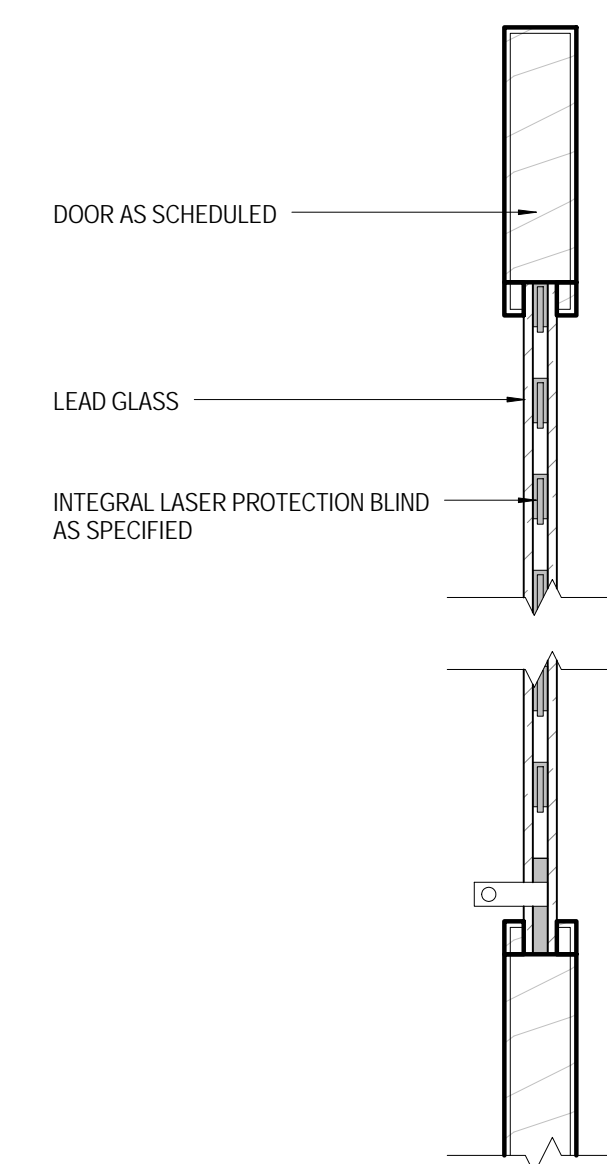
DOOR SCHEDULE ABBREVIATIONS

- HM - HOLLOW METAL
- ++ - REFER TO MANUFACTURER
- PT - PAINTED FINISH
- SF - STAINED FINISH
- SR - SMOKE RESISTANT

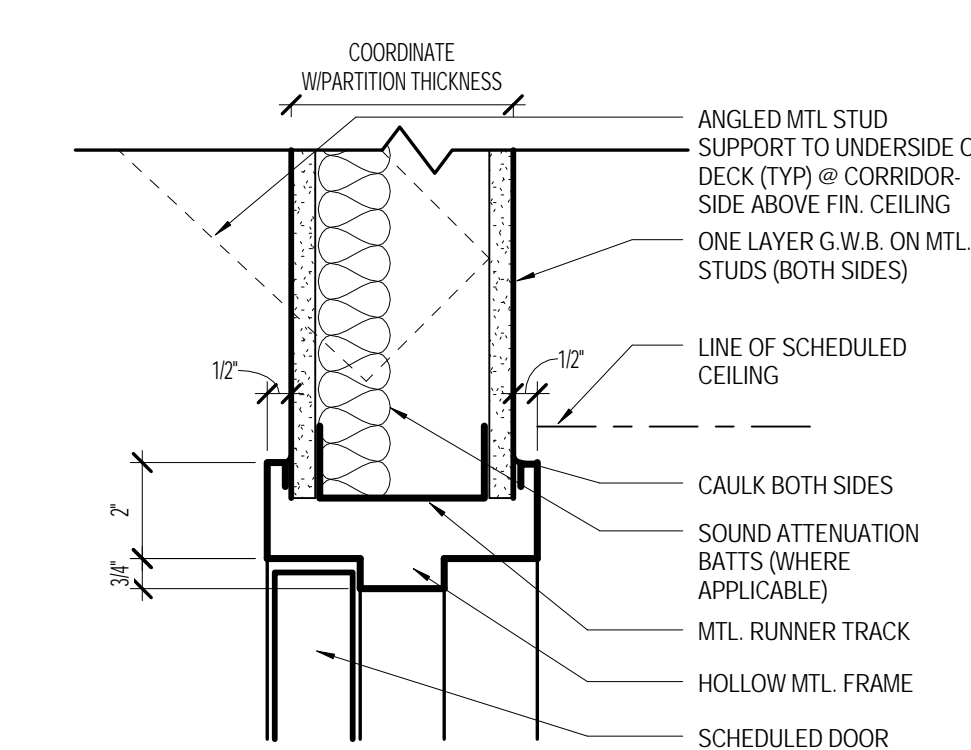


8 HM LEAD LINED JAMB @ GLASS DETAIL  
3" = 1'-0"

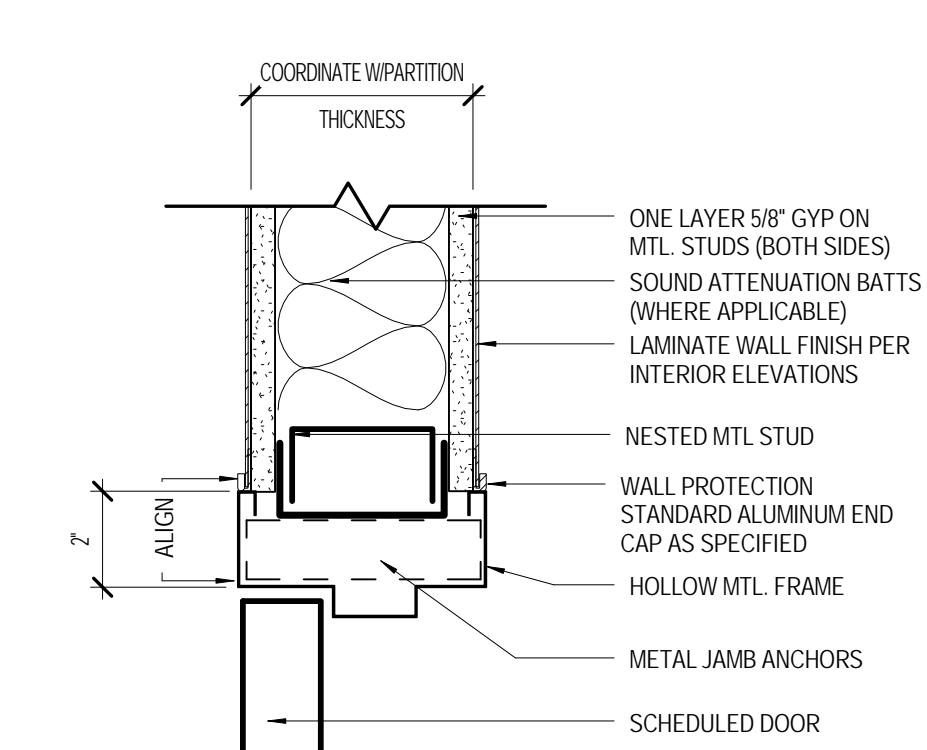
7 HM LEAD LINED JAMB DETAIL  
3" = 1'-0"



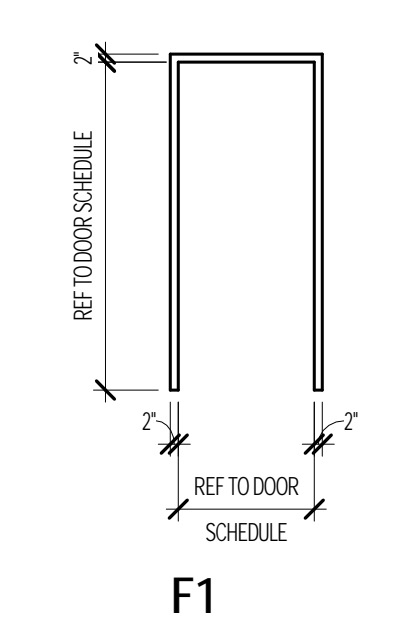
9 DETAIL SECTION AT INTEGRAL LASER PROTECTION BLINDS  
3" = 1'-0"



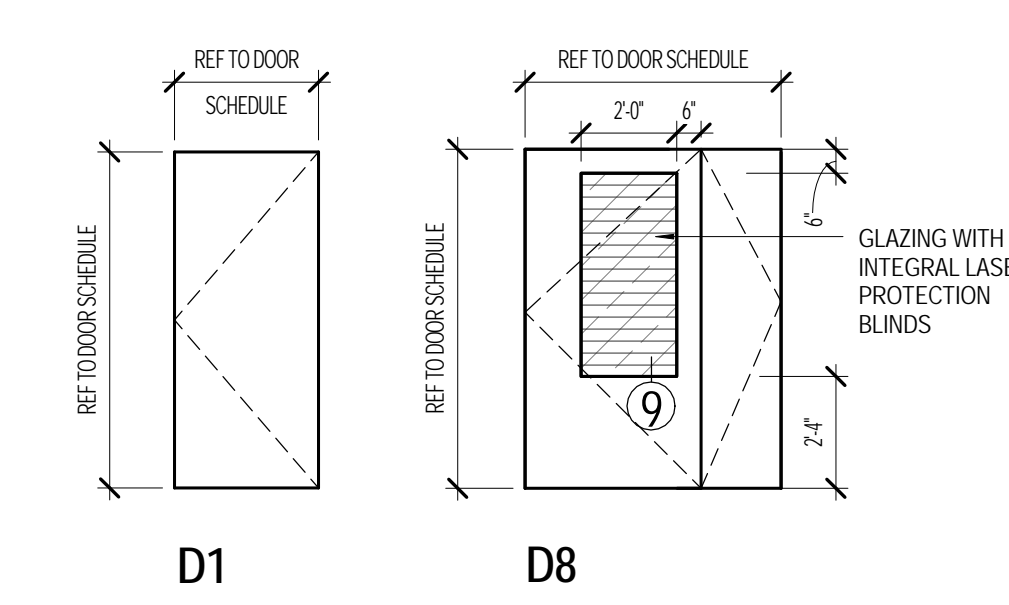
6 HM HEAD DETAIL  
3" = 1'-0"



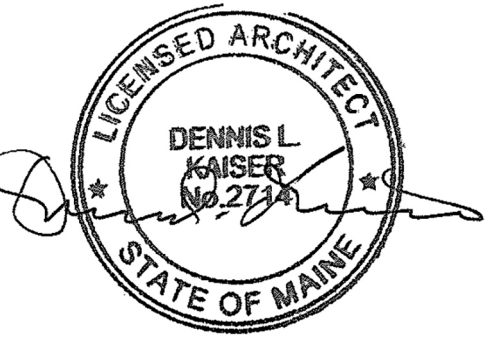
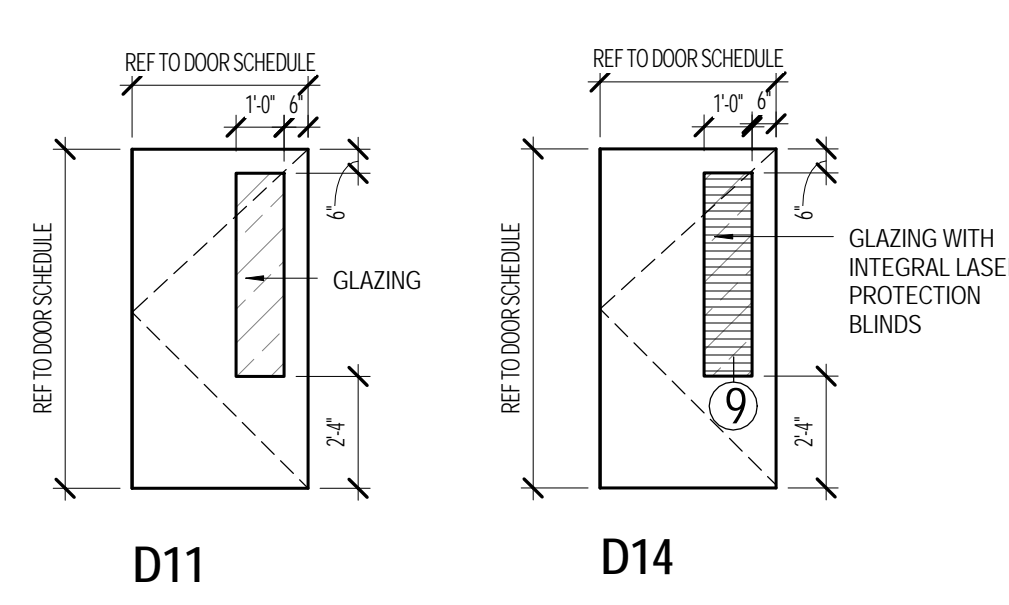
5 HM JAMB DETAIL  
3" = 1'-0"



2 DOOR FRAME TYPES  
1/4" = 1'-0"



1 DOOR TYPES  
1/4" = 1'-0"



Revisions

ISSUED FOR PERMIT	08.21.2015
ISSUED FOR BID	07.31.2015
NO ISSUE	DATE
<b>Sheet Information</b>	
Date	AUGUST 21, 2015
Job #	152168.023
Drawn	Author
Checked	Checker
Approved	Approver
<b>Title</b>	

BASEMENT FINISH AND DOOR SCHEDULE