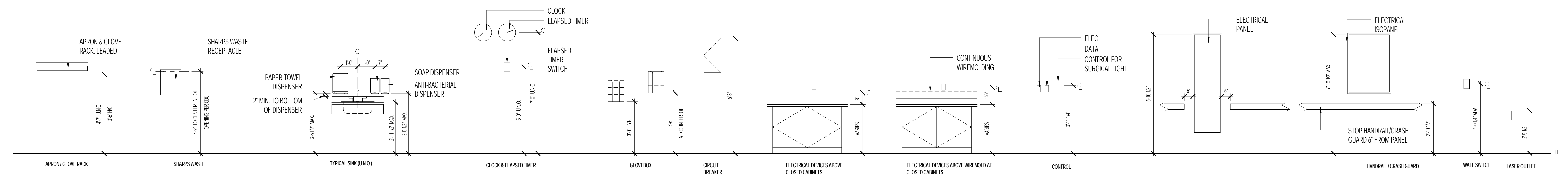
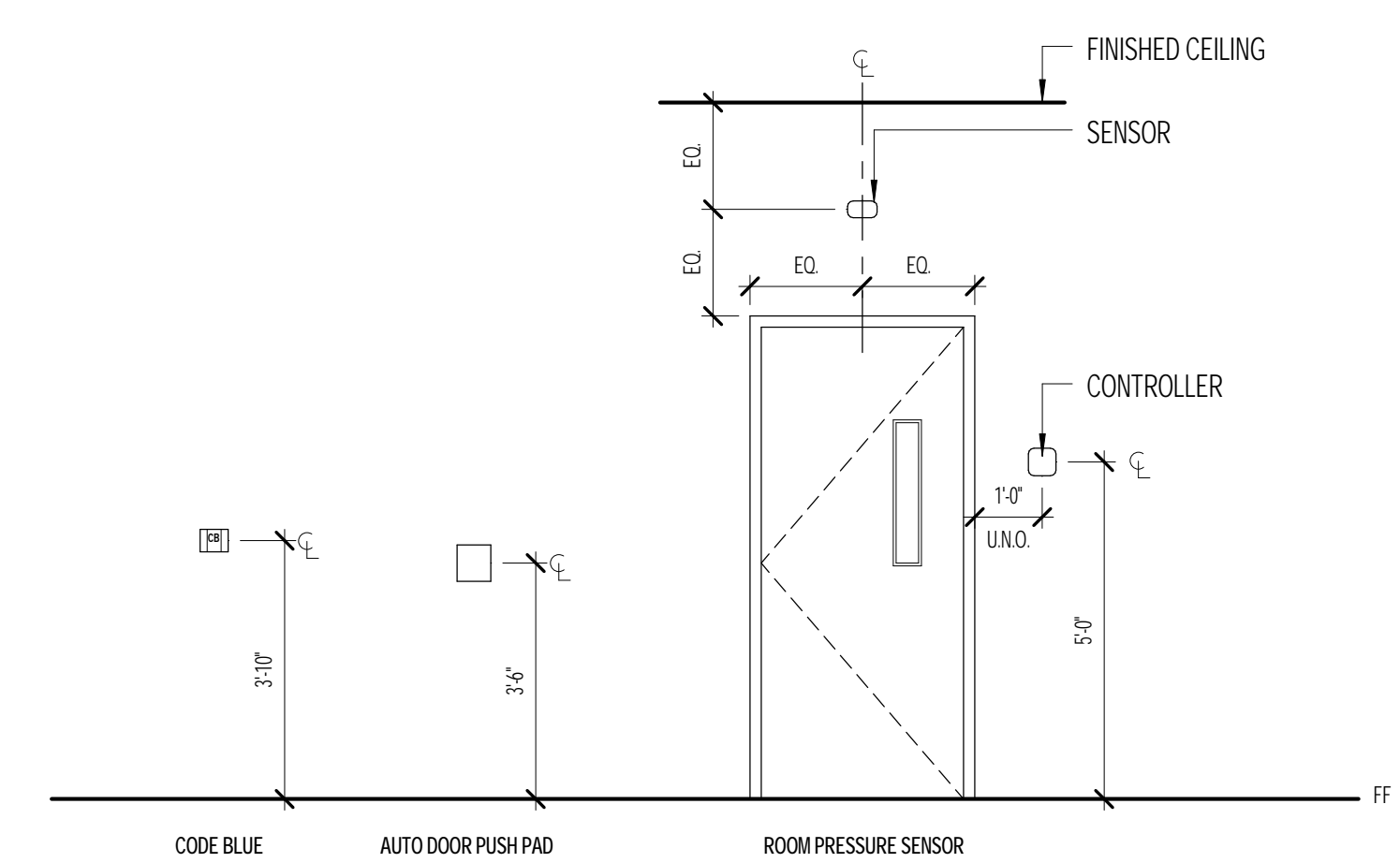
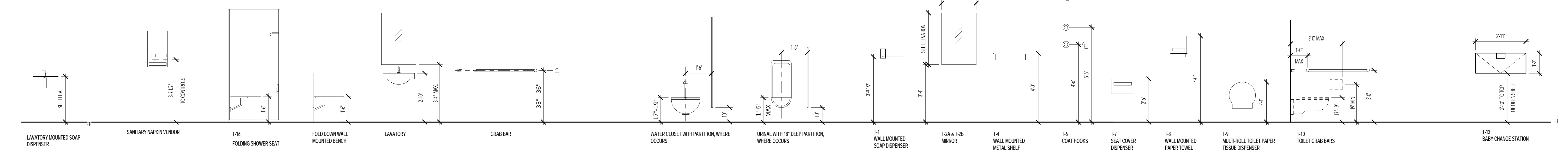


2 WALL PROTECTION - PARTIAL HT SHEET  
3' - 1'-0"

1 WALL PROTECTION - FULL-HEIGHT  
3' - 1'-0"



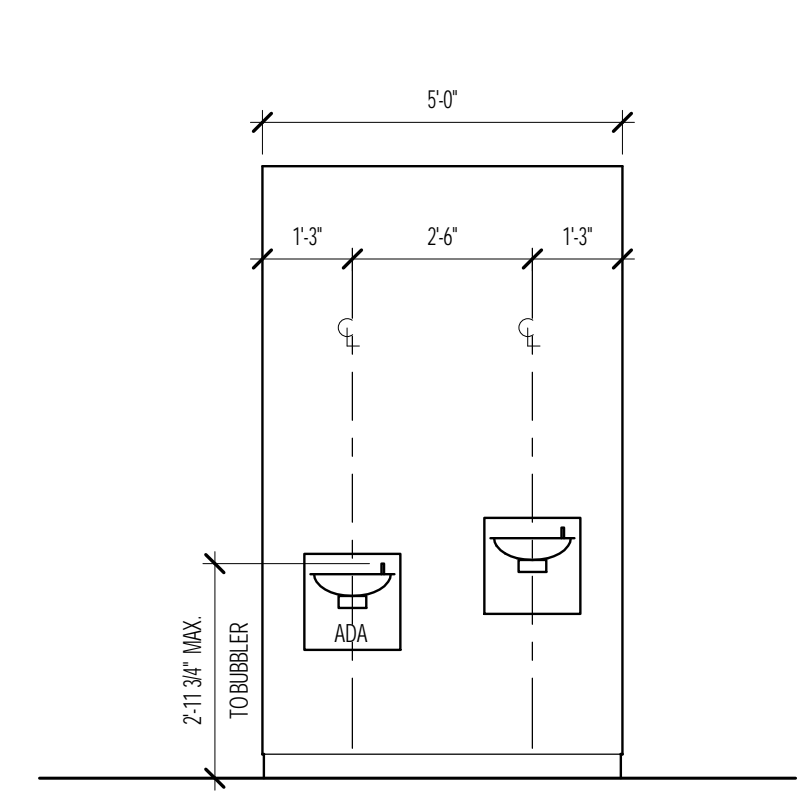
**MEDICAL AND LABORATORY EQUIPMENT / FIXTURE MOUNTING HEIGHT**



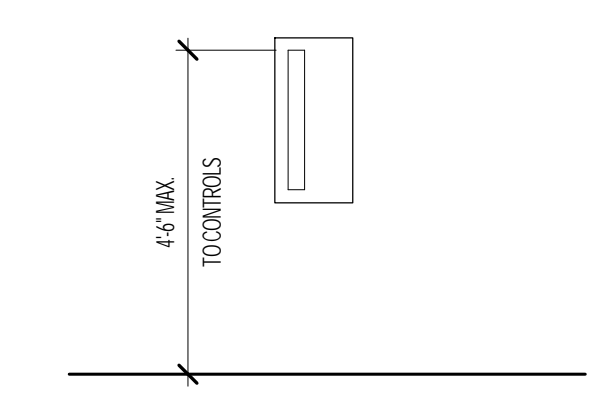
**SHOWER / RESTROOM FIXTURE ADA MOUNTING HEIGHT**

THE DIAGRAMS ARE GUIDELINES FOR THE PROPER MOUNTING HEIGHTS OF EQUIPMENT AND PLUMBING FIXTURES. THE ITEMS SHOWN ARE LOCATED FOR ACCESSIBILITY, SAFETY AND CONFORMANCE WITH APPLICABLE CODES AND STANDARDS. IN NO CASE SHALL THIS INFORMATION SUPERSEDE REQUIREMENTS OF APPLICABLE CODES, STANDARDS OR AUTHORITIES, IF A CONFLICT IS FOUND.

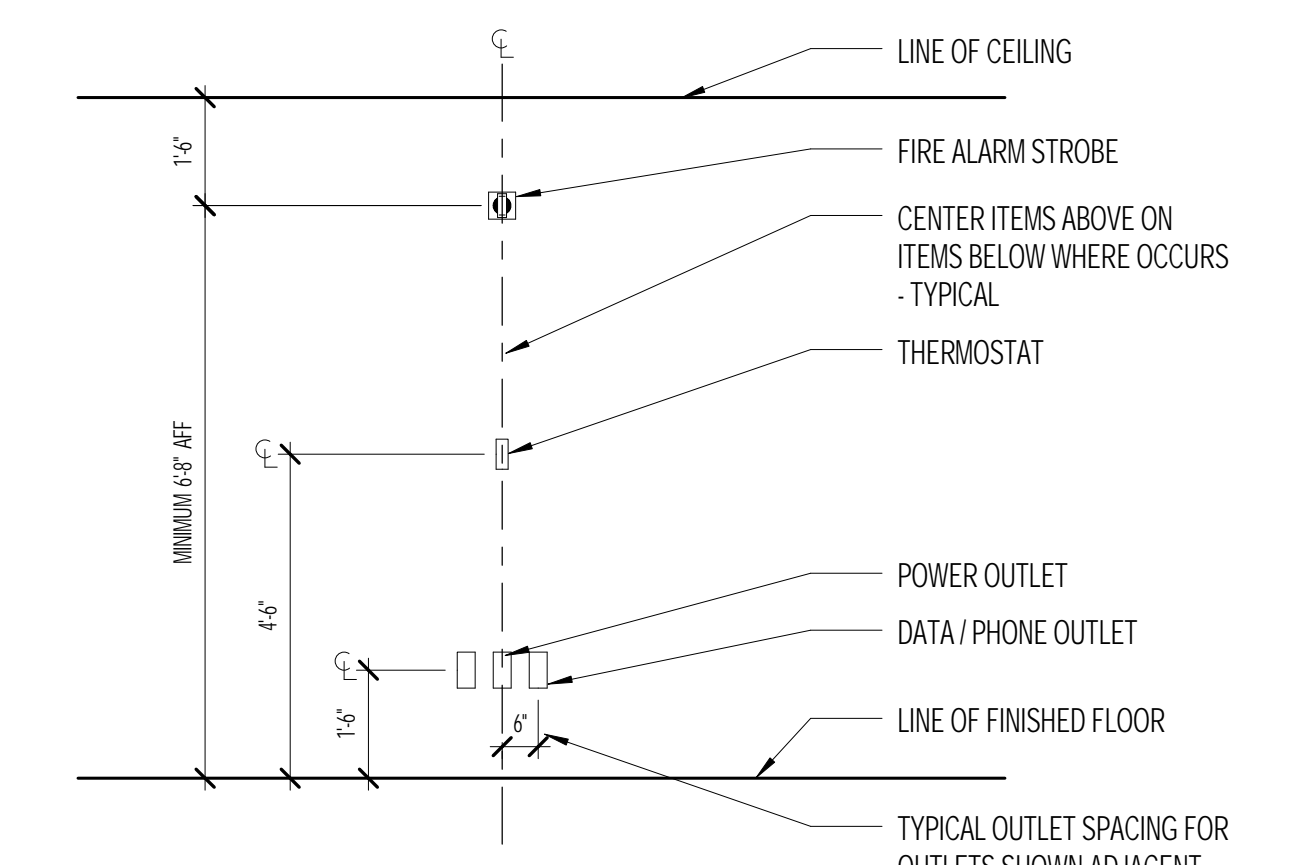
1. IF FIELD CONDITIONS CREATE CONFLICTS WITH THE REQUIRED MOUNTING HEIGHTS, NOTIFY ARCHITECT PRIOR TO INSTALLATION.
2. ALL OUTLETS, CABINETS, SWITCHES, ALARMS AND SIGNALS NOT DIMENSIONED ON DRAWINGS SHALL BE COORDINATED WITH ARCHITECT PRIOR TO INSTALLATION.
3. ALL ITEMS SHALL ALIGN HORIZONTALLY AND VERTICALLY IF MORE THAN ONE ITEM IS LOCATED ON A WALL, UNO.
4. THE DIAGRAMS ON THIS SHEET ARE TO ESTABLISH GUIDELINES FOR THE LOCATION OF DEVICES GENERALLY THROUGHOUT THE PROJECT. THESE DIMENSIONS SHALL BE TYPICAL UNLESS NOTED OTHERWISE ON DRAWINGS FOR SPECIFIC LOCATIONS.



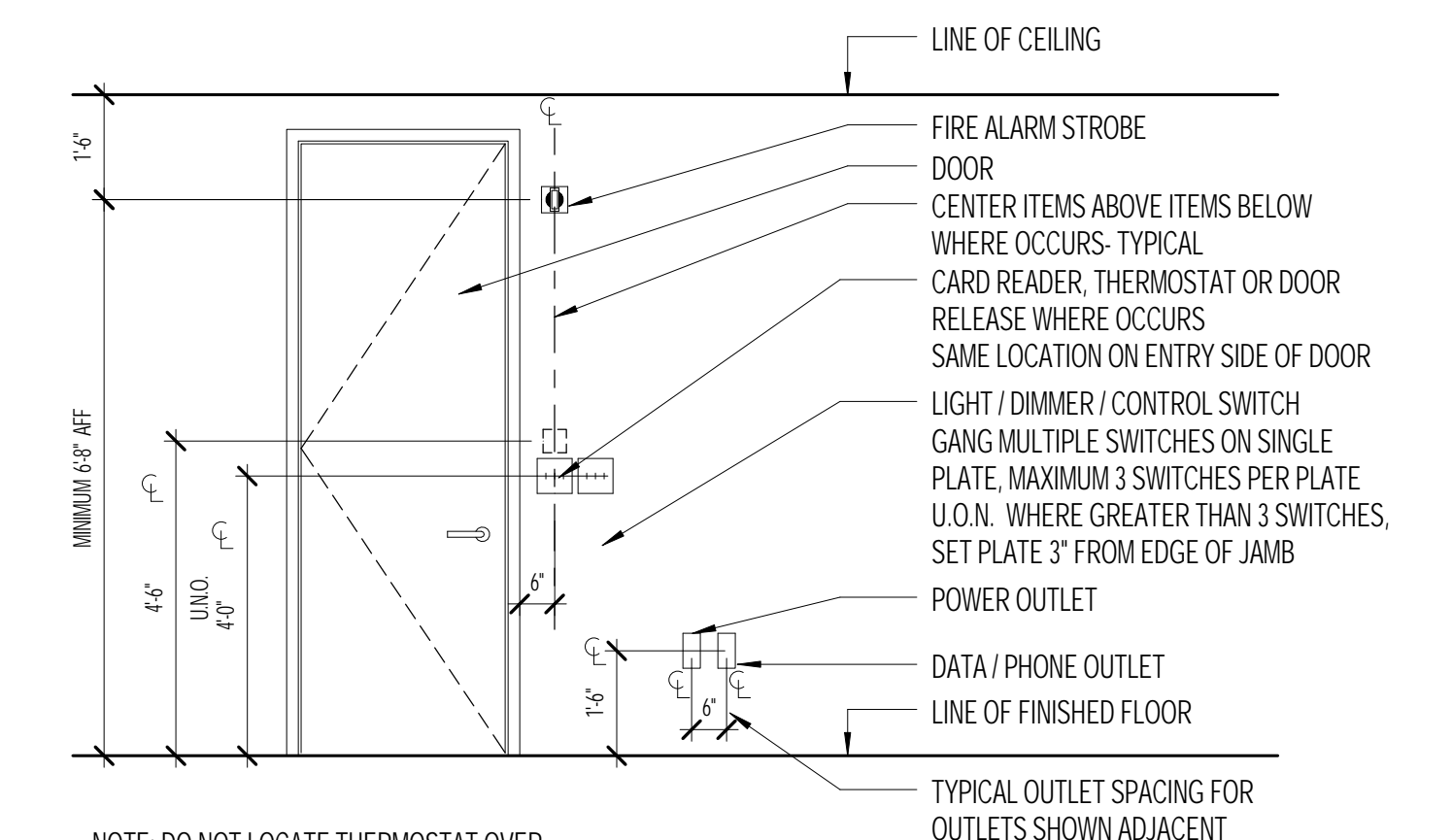
**DRINKING FOUNTAIN**



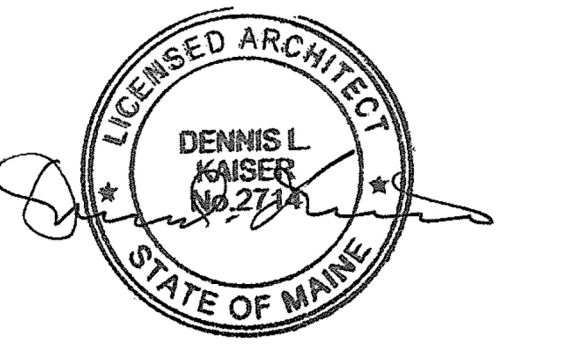
**FIRE EXTINGUISHER CABINET AND FIRE HOSE CABINET**



**ELEVATION / STACKING DEVICES**



**ELEVATION @ TYPICAL DOOR**



**Revisions**

Sheet Information	
ISSUED FOR PERMIT	08.21.2015
ISSUED FOR BID	07.31.2015
DATE	
NO. ISSUE	
Date	AUGUST 21, 2015
Job #	152168.023
Drawn	Author
Checked	Checker
Approved	Approver

**TYPICAL MOUNTING HEIGHTS**