

© 2015 RYAN SENATORE ARCHITECTURE

PHARMACY RENOVATIONS
MAINE MEDICAL CENTER
PORTLAND, MAINE



RYAN SENATORE ARCHITECTURE
565 CONGRESS STREET
PORTLAND, MAINE
207-650-6414
senatorearchitecture.com

CONSULTANTS:

REVISIONS:

DATE: JULY 7, 2015

PROJECT No. 1509

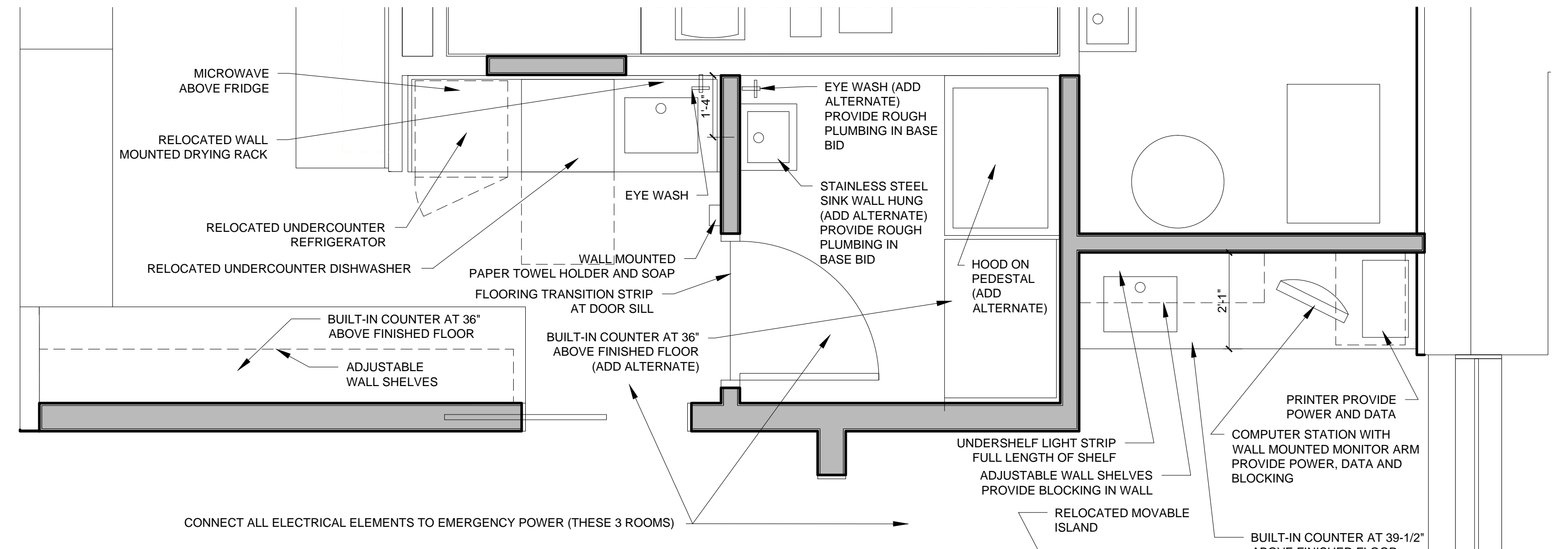
DRAWN BY:

CHECKED BY: RJS

SCALE: AS NOTED

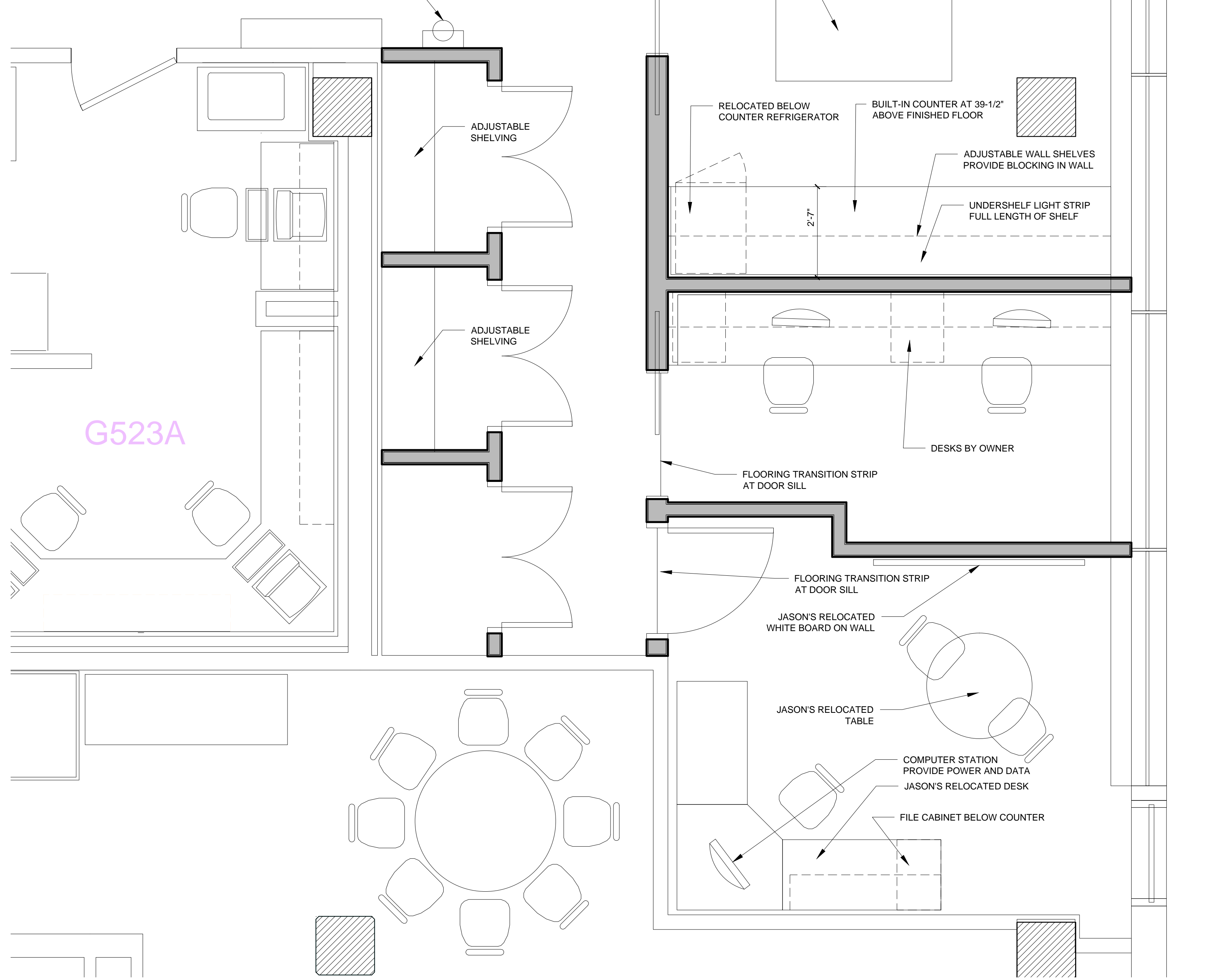
SHEET TITLE:
EQUIPMENT AND FURNISHING PLAN

A1-3

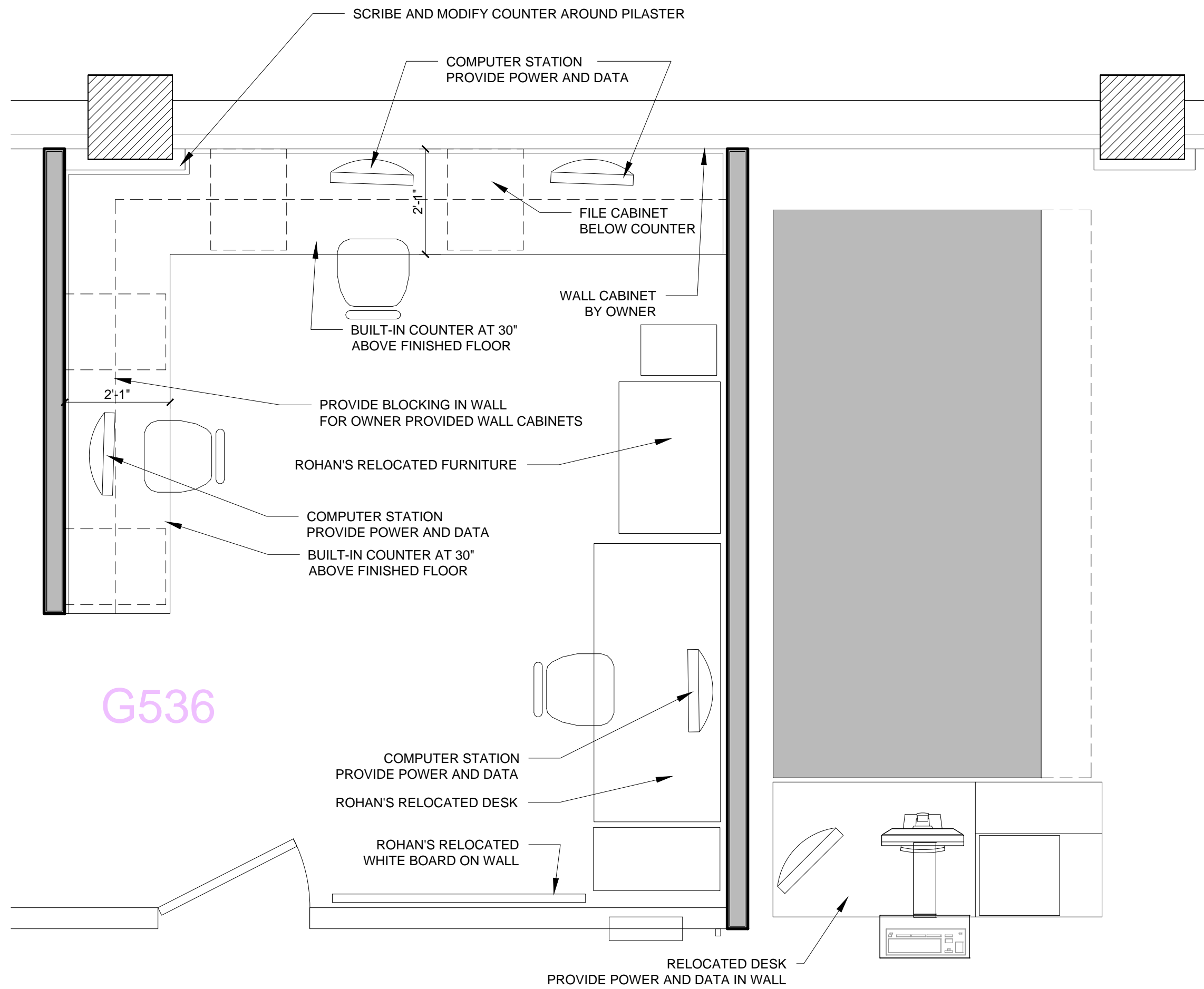


CONNECT ALL ELECTRICAL ELEMENTS TO EMERGENCY POWER (THESE 3 ROOMS)

SEMI-RECESSED FIRE EXTINGUISHER



1 EQUIPMENT AND FURNISHINGS PLAN
1/2" = 1'-0"



2 EQUIPMENT AND FURNISHINGS PLAN AT CAROUSEL
1/2" = 1'-0"

