

Revisions

NO.	ISSUE	DATE
1	ISSUED FOR PERMIT	06-08-15
1	ADDENDUM NO. 1	05-22-15
NO.	ISSUE	DATE

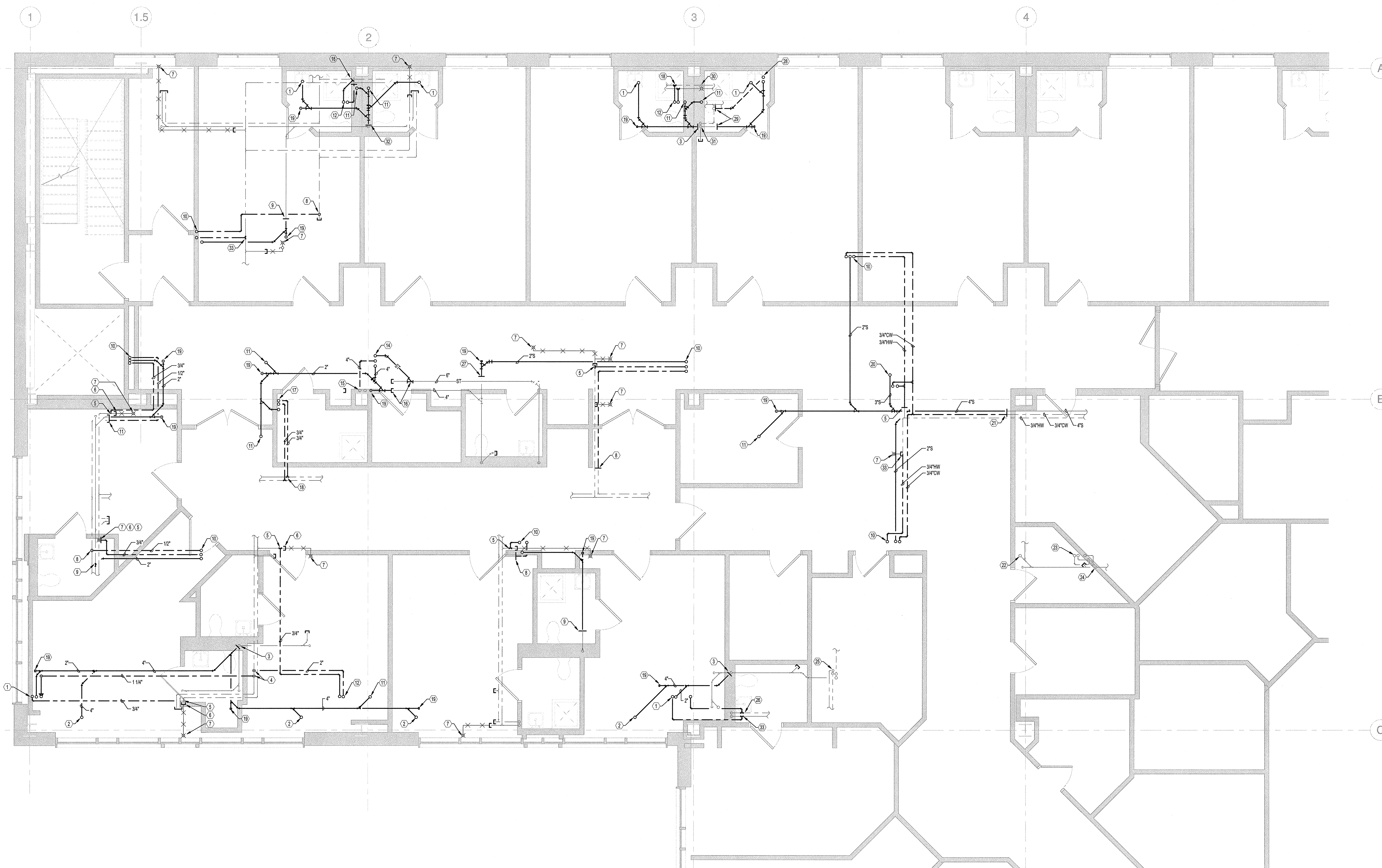
Sheet Information

Date	MAY 1, 2015
Job Number	B140185-000
Drawn	DC
Checked	JR
Approved	JR

Title

PLUMBING FLOOR
PLAN LEVEL 5

Sheet
P02-05



1 PLUMBING PLAN
SCALE: 1/4" = 1'-0"

CONTRACTORS DUTY TO INSPECT:

THE OWNER DISCLAIMS ANY WARRANTY ABOUT THE ACCURACY OR COMPLETENESS OF EXISTING CONDITIONS AFFECTED BY THIS WORK. PORTIONS OF THE AREAS TO BE DEMOLISHED AND ALTERED WHERE NOT ACCESSIBLE DURING FIELD SURVEY DISCOVERY EITHER DUE TO LIMITATIONS IN ACCESS BECAUSE OF CONCEALMENT OF PIPING UTILITIES BEHIND INACCESSIBLE CHASES, WALL, OR CEILING. THE CONTRACTOR SHALL EXERCISE REASONABLE DUE DILIGENCE TO DISCOVER ANY REASONABLE FORESEEABLE PHYSICAL CONDITIONS AFFECTED BY THIS WORK. THE DESCRIPTIONS ON THE DRAWING OF UTILITIES IN CONCEALED AREAS REQUIRING DEMOLITION, MODIFICATION, OR OFFSET IS BASED ON SIMILAR CONDITIONS ENCOUNTERED IN THE BUILDING. PIPING VISIBLE IN ADJACENT SPACES AND ON GENERAL ASSUMPTIONS ABOUT THE PLUMBING PIPING SYSTEMS. THE CONTRACTOR SHALL INCLUDE IN HIS PRICE ANY AND ALL COSTS ASSOCIATED WITH THE DEMOLITION AND ALTERATION OF CONCEALED WORK DESCRIBED ON THE PLANS AND REASONABLY INFERRED. ANY ACTUAL CONDITIONS DISCOVERED DURING DEMOLITION THAT DIFFER MATERIALLY FROM THOSE DESCRIBED ON THE PLANS SHALL BE BROUGHT TO THE ATTENTION OF THE OWNER. FOR FURTHER COORDINATION AND INVESTIGATION, PROMPT NOTICE OF DIFFERING AND UNFORESEEN CONDITIONS BY THE CONTRACTOR IS OF THE ESSENCE TO ALLOW A REVIEW TO THE CONDITIONS BY THE OWNER BEFORE THEY ARE DISTURBED, AND TO DETERMINE WHETHER THE DIFFERING CONDITION WARRANTS EQUITABLE ADJUSTMENT, IF ANY.

PLUMBING KEYNOTES:

- 1 1/2" HW UP
1-1/4" CW UP
2" W UP
- 2 4" S UP
- 3 CONNECT TO EXISTING 4" S WITHIN TOILET CHASE WITH NEW 4" S PIPING CONNECTION AS SHOWN.
- 4 CONNECT TO EXISTING 2" CW PIPING MAIN ABOVE THE CEILING WITH NEW 1-1/4" CW PIPING CONNECTION AND EXTEND UP TO SERVE NEW 6TH FLOOR PLUMBING FIXTURES AS REQUIRED.
- 5 CONNECT TO EXISTING 3/4" HW SUPPLY ABOVE THE CEILING WITH NEW 3/4" HW PIPING CONNECTION AND EXTEND UP TO SERVE NEW 6TH FLOOR PLUMBING FIXTURES AND BACKFEED THE EXISTING BUILDING HOT WATER RECIRCULATION SYSTEM.
- 6 CUT, CAP AND MAKE-SAFE EXISTING 3/4" HW SUPPLY PIPING AS SHOWN. (CONTRACTOR SHALL REMOVE EXISTING 3/4" HW SUPPLY PIPING PRIOR TO INSTALLATION OF NEW 3/4" HW PIPING CONNECTION TO MAINTAIN HOT WATER RECIRCULATION OF THE EXISTING BUILDING AS REQUIRED.)
- 7 (E) 3/4" HW UP. (CONTRACTOR SHALL REMOVE EXISTING 3/4" HW SUPPLY PIPING PRIOR TO INSTALLATION OF NEW 3/4" HW PIPING CONNECTION TO MAINTAIN HOT WATER RECIRCULATION OF THE EXISTING BUILDING AS REQUIRED.)
- 8 CONNECT TO EXISTING CW MAIN ABOVE THE CEILING WITH NEW 1/2" CW PIPING CONNECTION AND EXTEND UP TO SERVE NEW 6TH FLOOR PLUMBING FIXTURES AS REQUIRED.
- 9 CONNECT TO EXISTING WASTE PIPING MAIN ABOVE THE CEILING WITH NEW 2" W PIPING CONNECTION AS SHOWN.
- 10 1/2" W UP
1/2" CW UP
2" W UP
- 11 2" W UP
- 12 3/4" W UP
2" CW UP
- 13 (E) 3/4" HW UP. (CONTRACTOR SHALL REMOVE EXISTING 3/4" HW SUPPLY PIPING PRIOR TO INSTALLATION OF NEW 3/4" HW PIPING CONNECTION TO MAINTAIN HOT WATER RECIRCULATION OF THE EXISTING BUILDING AS REQUIRED.)
- 14 4" ST UP
4" S UP
4" SS UP
- 15 CONNECT TO EXISTING 4" V MAIN ABOVE THE CEILING WITH NEW 4" V CONNECTION AND BACKFEED THE EXISTING BUILDING AS SYSTEM REQUIRED.
- 16 CONNECT TO EXISTING 6" ST AND 4" S ABOVE THE CEILING WITH NEW 6" ST AND 4" S PIPING CONNECTIONS AND BACKFEED THE EXISTING BUILDING SYSTEM AS REQUIRED.
- 17 3/4" W UP
3/4" CW UP
2" W UP
- 18 CONNECT TO EXISTING CW AND HW MAINS ABOVE THE CEILING WITH NEW 3/4" CW AND 1/2" HW AND EXTEND UP TO THE 6TH FLOOR PLUMBING FIXTURES AS REQUIRED.
- 19 SANITARY CLEAN OUT UP TO FLOOR ABOVE.
- 20 3" W UP FROM MSS-1
3/4" W UP
3/4" CW UP
- 21 CONNECT TO EXISTING 3/4" CW AND 4" S ABOVE THE CEILING WITH NEW 3/4" CW AND 4" S PIPING CONNECTION AS SHOWN.
- 22 (E) 2" W UP
(E) 2" V UP
(E) 1" HW UP
(E) 2" CW UP
- 23 (E) 1" HW DN
(E) 2" W DN & V RISE
(E) 1" S DN
- 24 (E) 1/2" CW UP
(E) 3/4" HW UP
(E) 4" S UP
(E) 4" SS UP
- 25 CONNECT TO EXISTING CW PIPING ABOVE THE CEILING WITH NEW 1-1/4" CW PIPING CONNECTION AND EXTEND UP TO SERVE NEW 6TH FLOOR PLUMBING FIXTURES AS REQUIRED.
- 26 CONNECT TO EXISTING 4" S PIPING ABOVE THE CEILING WITH NEW 3/4" CW AND 4" S PIPING CONNECTION AS SHOWN.
- 27 CONNECT CAPPED 4" V AND 4" S WITH NEW 4" V AND 4" S PIPING CONNECTION ABOVE THE CEILING AND EXTEND TO NEW RISER LOCATION AS SHOWN.
- 28 (E) 2-1/2" CW DN
(E) 1-1/4" HW DN
- 29 (E) 4" S DN
(E) 1" S DN
- 30 (E) 4" S DN
- 31 CONNECT TO EXISTING 1/2" HW SUPPLY PIPING ABOVE THE CEILING WITH NEW 1/2" HW PIPING CONNECTION AND EXTEND UP TO SERVE NEW 6TH FLOOR PLUMBING FIXTURES AND BACKFEED THE EXISTING BUILDING HOT WATER RECIRCULATION SYSTEM.