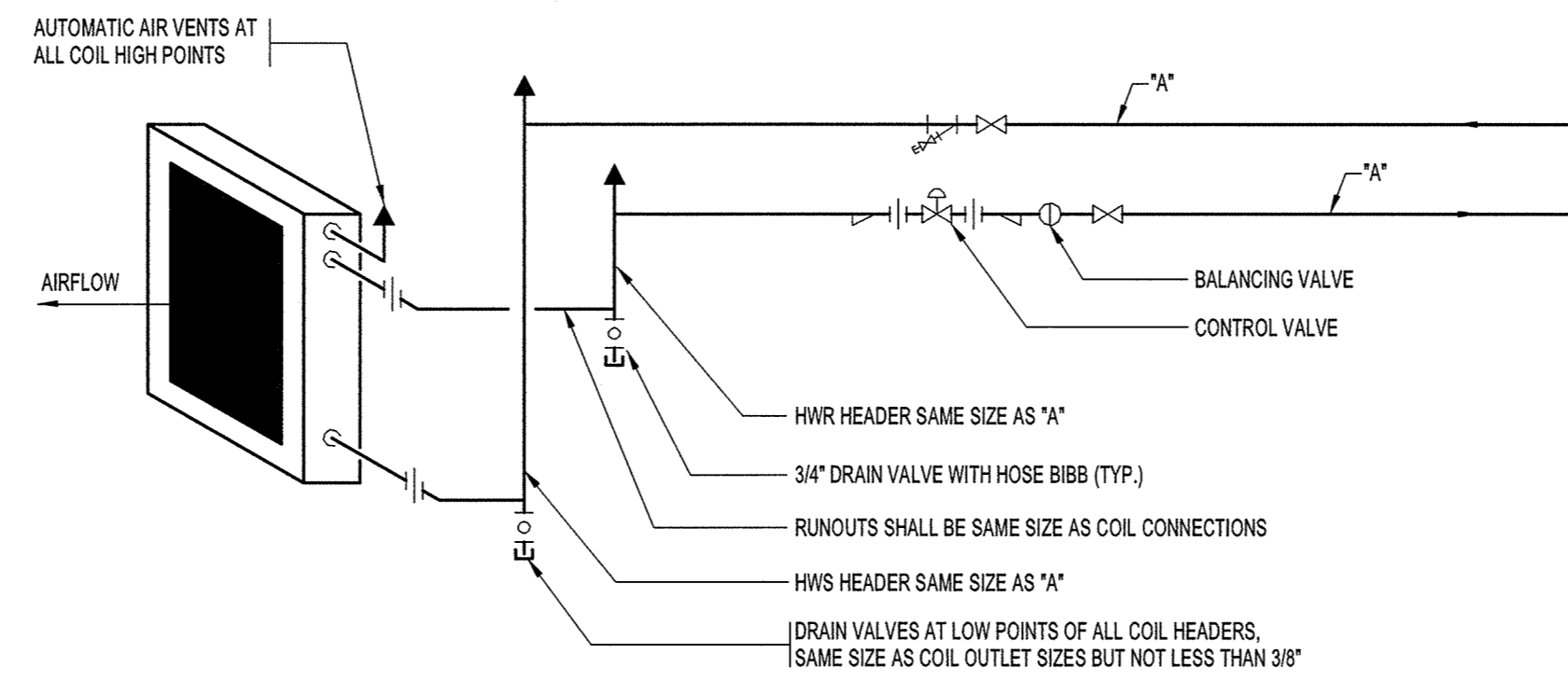


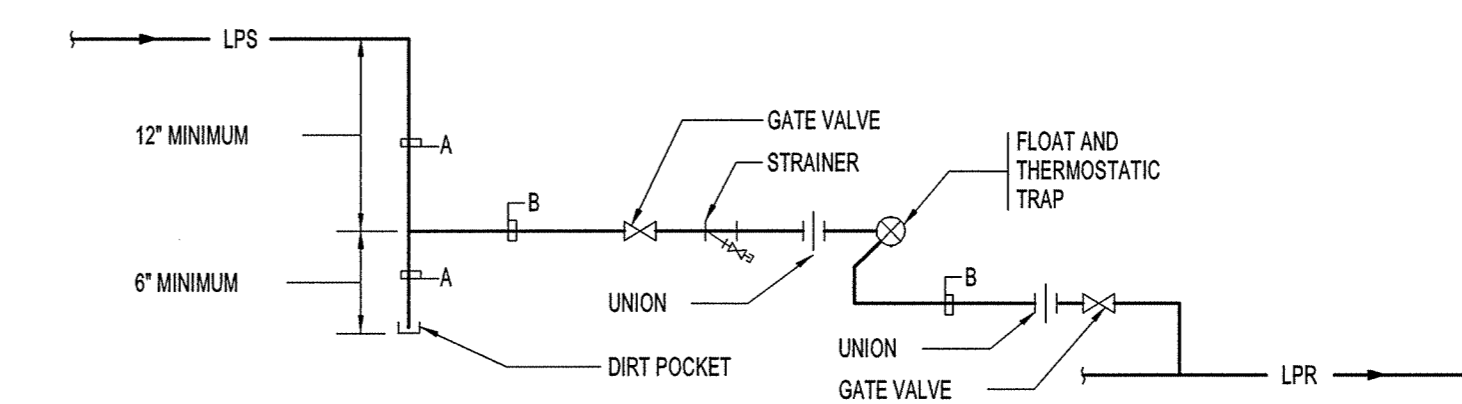
- NOTES:
1. X" = MINIMUM DROP EQUAL TO NEGATIVE INTERNAL STATIC PRESSURE AT FAN INLET
 2. XZ + 1" = (MINIMUM 5 INCHES)
 3. ADD STRUCTURAL STEEL TO RAISE THE BOTTOM OF THE UNIT TO ACCOMMODATE DROP AND TRAP HEIGHT
 4. PITCH DRAIN FOR PROPER RUN-OFF AND DISCHARGE TO APPROVED RECEPTACLE.
 5. SUPPORT DRAIN LINES TO PREVENT SAG AND CONDENSATE OVERFLOW.
 6. MANUALLY PRIME FILL TRAP BEFORE START-UP TO FORM INITIAL DRAIN SEAL.

DRAIN PAN WATER SEAL PIPING
DRAW THRU UNIT



- NOTES:
1. LOCATE PIPE UNIONS AND ARRANGE PIPING TO FACILITATE COIL REMOVAL.
 2. FOR SIZES "A" SEE PLANS AND FLOW DIAGRAMS.

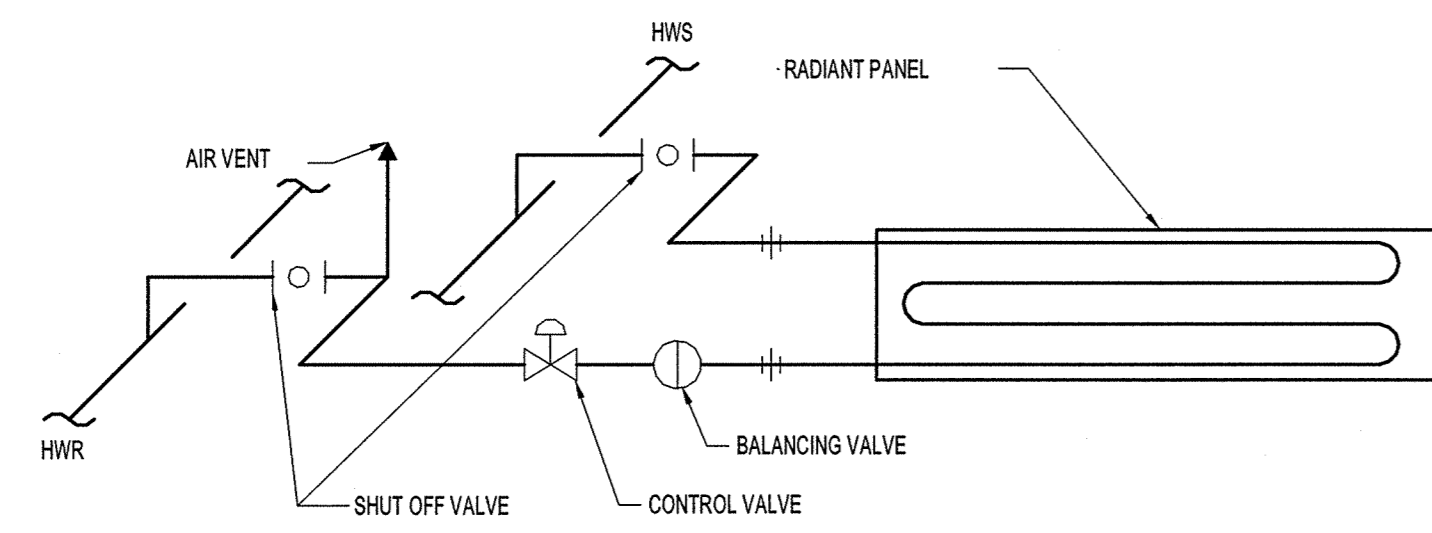
HOT WATER REHEAT COIL CONNECTIONS
ONE HIGH



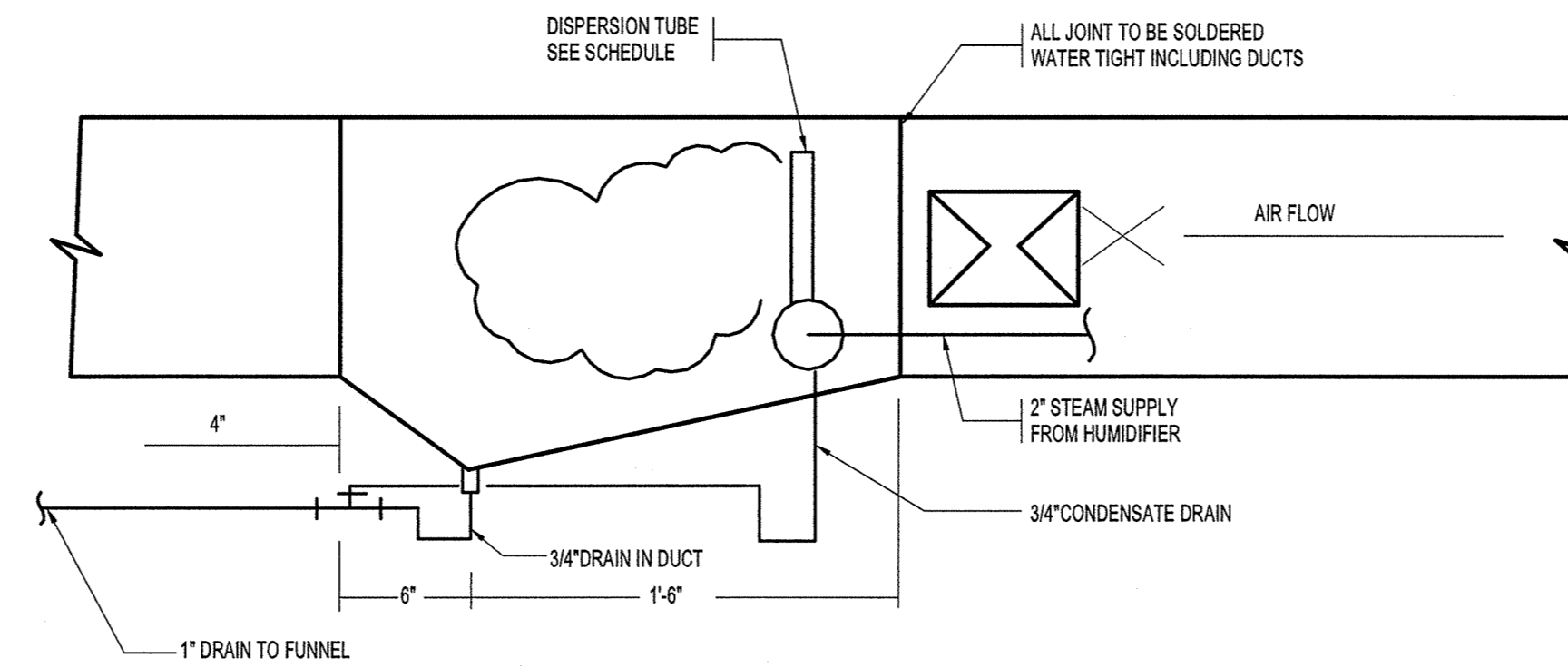
PIPE SIZES (IN)	
LPS	A
3/4"	3/4"
1" & 1-1/4"	1" & 1-1/4"
1-1/2" & 2"	1-1/2" & 2"
2-1/2" & 3"	2-1/2" & 3"
4" & 5"	4" & 5"
6" & 8"	6"
10" & 12"	8"
14" & 16"	8"

- NOTES:
1. PROVIDE THIS PIPING ARRANGEMENT WHERE (S) IS SHOWN ON THE DRAWINGS, AND FOR THE SPECIFIED 75 FT. STEAM SUPPLY DRIP REQUIREMENT.
 2. 9" DIMENSION FOR EQUIPMENT AND PRV DRIP ASSEMBLIES. PROVIDE PIPE AND TRAP SIZES AS PER THE MANUFACTURER'S RECOMMENDATIONS OR AS NOTED.
 3. FOR DRIP ASSEMBLY AT EVERY 75 FT. OF STEAM SUPPLY, THE 9" DIMENSION SHALL BE 34".

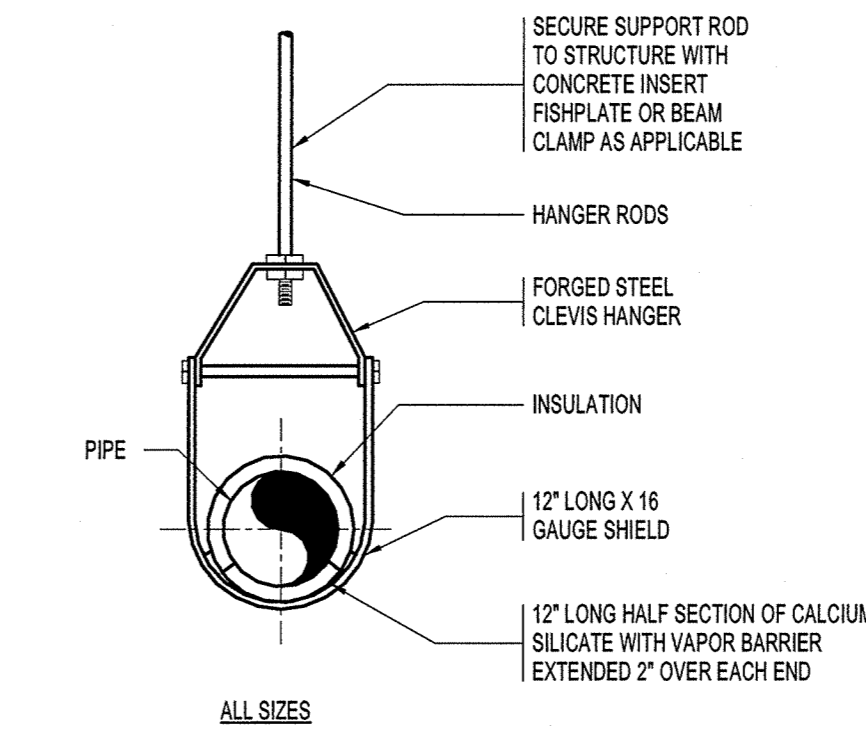
LOW PRESSURE STEAM DRIP ASSEMBLY



RADIANT HEAT CEILING PANEL

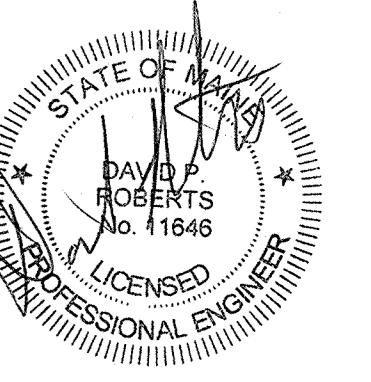


HUMIDIFIER PIPING AT DUCT



WHERE STRUCTURAL SLAB DOES NOT PERMIT INSERTS, SUPPORT PIPING FROM STRUCTURE WITH AUXILIARY STEEL IF REQUIRED.

WATER PIPING HANGER DETAIL



Revisions

NO	ISSUE	DATE
1	ADDENDUM NO. 1	05-22-15

Sheet Information	
Date	MAY 1, 2015
Job Number	B140185-000
Drawn	TU
Checked	DR
Approved	DR
Title	

MECHANICAL
DETAILS

Sheet
M00-21