

Table with columns: NO., ISSUED FOR PERMIT, DATE, SHEET INFORMATION (Date, Job Number, Drawn, Checked, Approved), Title

MECHANICAL DEMOLITION NOTES

- 1. ALL PIPING IN WALLS AND FLOORS NOT TO BE REUSED WILL BE PLUGGED OR CAPPED AND CUTTING AND PATCHING WILL BE PERFORMED TO RESTORE SURFACE TO ORIGINAL CONDITION BY THIS CONTRACTOR.
2. AFTER REMOVING PIPE THROUGH THE FLOOR SLABS, PACK OPENING WITH APPROVED FIRE-RATED PACKING.
3. THE CONTRACTOR SHALL INCLUDE IN HIS PRICE ALL COSTS ASSOCIATED WITH REMOVALS AND RELOCATIONS OF HVAC WORK AS DESCRIBED ON THE DRAWINGS AND IN THE SPECIFICATIONS WITH ALLOWANCES FOR EXPECTED OR UNFORESEEN DIFFICULTIES WHEN CONCEALED WORK HAS BEEN OPENED. NO CLAIMS FOR ADDITIONAL WORK ASSOCIATED WITH DEMOLITION WILL BE ACCEPTED, EXCEPT IN CERTAIN CASES CONSIDERED JUSTIFIABLE BY THE OWNER/ENGINEER.
4. THE CONTRACTOR SHALL PERFORM DEMOLITION AND REMOVAL WORK WITH MINIMUM INTERFERENCE WITH FUNCTIONING HVAC SYSTEMS. ALL AFFECTED SYSTEMS SHALL BE RECONNECTED AND RESTORED.
5. DEMOLITION AND REMOVAL WORK SHALL BE PERFORMED IN A NEAT AND WORKMANLIKE MANNER. THE CONTRACTOR SHALL PATCH, REPAIR OR OTHERWISE RESTORE ANY DAMAGED INTERIOR OR EXTERIOR BUILDING SURFACE TO ITS ORIGINAL CONDITION.
6. THE CONTRACTOR SHALL REMOVE ALL DUCT & PIPING SUPPORTS, ETC. FROM PARTITIONS THAT ARE TO BE REMOVED. WHERE THE REMOVAL OF THESE ITEMS DISRUPTS EXISTING PIPING THAT IS TO REMAIN, THE CONTRACTOR SHALL INSTALL AND PROVIDE BYPASS CONNECTIONS NECESSARY.
7. ALL PIPING WHICH BECOMES EXPOSED DURING THE ALTERATION WORK SHALL BE REMOVED AND REROUTED CONCEALED BEHIND FINISHED SURFACES.
8. PORTIONS OF PIPING & DUCTWORK TO BE REMOVED OR ABANDONED AS A RESULT OF DEMOLITION WORK, BUT WHICH ARE REQUIRED TO REMAIN ACTIVE, SHALL BE CUT AT CONVENIENT LOCATIONS, REROUTED AND RECONNECTED.
9. THE CONTRACTOR SHALL NOTIFY THE OWNER AT THE APPROPRIATE TIME OF THE PROJECTED DEMOLITION AND PHASING SCHEDULE SO THAT REMOVAL OR RELOCATION OF AFFECTED UTILITIES MAY BE CARRIED OUT IN COORDINATION WITH THE PROJECT REQUIREMENTS.
10. ALL EXISTING MATERIAL AND EQUIPMENT IN USABLE CONDITION, WHICH IS TO BE REMOVED UNDER THIS CONTRACT, SHALL REMAIN THE PROPERTY OF THE OWNER OR BE DISPOSED OF BY THE HVAC CONTRACTOR, AS DIRECTED BY THE OWNER.
11. ARRANGE TO WORK CONTINUOUSLY, INCLUDING OVER TIME, IF REQUIRED, TO ASSURE THAT SYSTEMS WILL BE SHUT DOWN ONLY DURING THE TIME ACTUALLY REQUIRED TO MAKE THE NECESSARY CONNECTIONS TO THE EXISTING SYSTEMS.
12. THE SHUTDOWN OF EXISTING BUILDING HVAC SERVICES SHALL BE COORDINATED WITH THE OWNER. MAKE ARRANGEMENTS AT LEAST 5 BUSINESS DAYS PRIOR TO A SHUTDOWN.
13. CONTRACTOR SHALL COMPLY WITH ALL FEDERAL STATE & LOCAL REQUIREMENTS REGARDING DISPOSAL OF REFRIGERANTS.

MECHANICAL GENERAL NOTES

- 1. GENERAL NOTES, SYMBOL LIST AND DETAILS ARE APPLICABLE TO ALL HVAC/MECHANICAL DRAWINGS.
2. ALL WORK IS NEW UNLESS OTHERWISE NOTED.
3. DRAWINGS ARE DIAGRAMMATIC. DETERMINE LOCATIONS OF SYSTEMS AND COMPONENTS IN FIELD. RELOCATE EXISTING WORK THAT INTERFERES WITH WORK OF THIS CONTRACT.
4. COORDINATE THIS WORK WITH THAT OF OTHER TRADES.
5. DIMENSIONS SHOWN ON PLAN ARE HORIZONTAL. DIMENSIONS SHOWN IN ELEVATION ARE VERTICAL EXCEPT IN WAY OF STRUCTURAL STEEL. DIMENSIONS ARE MEASURED PERPENDICULAR TO FLANGE.
6. NEITHER ACCURACY NOR COMPLETION OF SERVICES AND UTILITY LOCATIONS SHOWN ON DRAWINGS IS GUARANTEED. DETERMINE EXACT LOCATIONS OF EXISTING SERVICES AND UTILITIES IN FIELD, WHETHER OR NOT SHOWN ON DRAWINGS. EXERCISE CAUTION AND IDENTIFY LOCATIONS OF UNMARKED UTILITY LINES AS NECESSARY TO PERFORM WORK OF THE SECTION.
7. MANUFACTURERS MODEL NUMBERS ARE SPECIFIED SOLELY TO ESTABLISH STANDARDS OF QUALITY FOR PERFORMANCE AND MATERIALS.
8. PRODUCT INSTALLATION SHALL ADHERE TO MANUFACTURERS RECOMMENDATIONS.
9. PROVIDE ACCESS PANELS FOR EQUIPMENT THAT REQUIRES PERIODIC SERVICE.
10. PROVIDE HANGERS, INSERTS, ANCHORS, SUPPLEMENTAL STEEL & SUPPORTS AS REQUIRED TO SUPPORT DUCTWORK, PIPING AND EQUIPMENT FROM STRUCTURE.
11. SCHEDULE WORK OF THIS SECTION TO AVOID INTERFERING WITH EXISTING OPERATIONS IN THE FACILITY.
12. COORDINATE ROOF PENETRATIONS WITH WORK OF OTHER SECTIONS AND WITH FLASHING REQUIREMENTS. MECHANICAL CONTRACTOR TO NOTIFY OWNER PRIOR TO STARTING WORK TO VERIFY COMPLIANCE WITH BOND AND WARRANTY OF EXISTING ROOF.
13. RUN DUCTS AND PIPING CONCEALED, UNLESS OTHERWISE SPECIFIED AND CLEAR OF CEILING INSERTS.
14. INSTALL THERMOSTATS 4'-4" ABOVE FINISHED FLOOR OR AS DIRECTED OTHERWISE BY ARCHITECT.
15. STRUCTURAL WELDING SHALL BE CONTINUOUS 1/4" FILLET UNLESS OTHERWISE SPECIFIED.
AIR SYSTEMS
16. AIR SYSTEMS REFER TO ARCHITECTURAL REFLECTED CEILING PLANS FOR EXACT LOCATIONS OF AIR DEVICES.
17. INTERNAL AIRFLOW DIMENSIONS ARE SHOWN FOR DUCTS. INCREASE DUCT SIZE AS NECESSARY TO MAINTAIN FREE FLOW AREA INDICATED.
18. USE FLAT TRANSVERSE SEAM FOR DUCTWORK WHERE SPACE AVAILABLE DICTATES.
19. DIFFUSER SIZES SHOWN ARE NECK SIZES. REGISTERS AND GRILLE SIZES ARE NOMINAL.
20. PROVIDE VOLUME DAMPERS OR OTHER APPROVED BALANCING DEVICES AT DUCT BRANCHES AND RUN OUTS.
21. PROVIDE 3" CLEARANCE IN FRONT OF ALL ELECTRIC CONTROL PANELS PER N.E.C. AND MFG. REQUIREMENTS.
22. PROVIDE DUCT TRANSITIONS FROM VAV BOX INLET/OUTLET DUCT WORK AT SIZES INDICATED TO VAV BOX INLET/OUTLET UNIT CONNECTIONS.
23. VAV DUCT INLET SIZE SHALL BE AS SCHEDULED OR AS INDICATED ON THE FLOOR PLANS. PROVIDE TRANSITION FROM DUCT SIZE INDICATED ON THE FLOOR PLANS TO SCHEDULED SIZE MINIMUM 2'-0" FROM VAV BOX INLETS.
PIPING SYSTEMS
24. PITCH PIPING 1" IN 20' IN DIRECTION OF FLOW.
25. PROVIDE TRAPS IN CONDENSATE LINES THAT EXTEND OVER 2'.

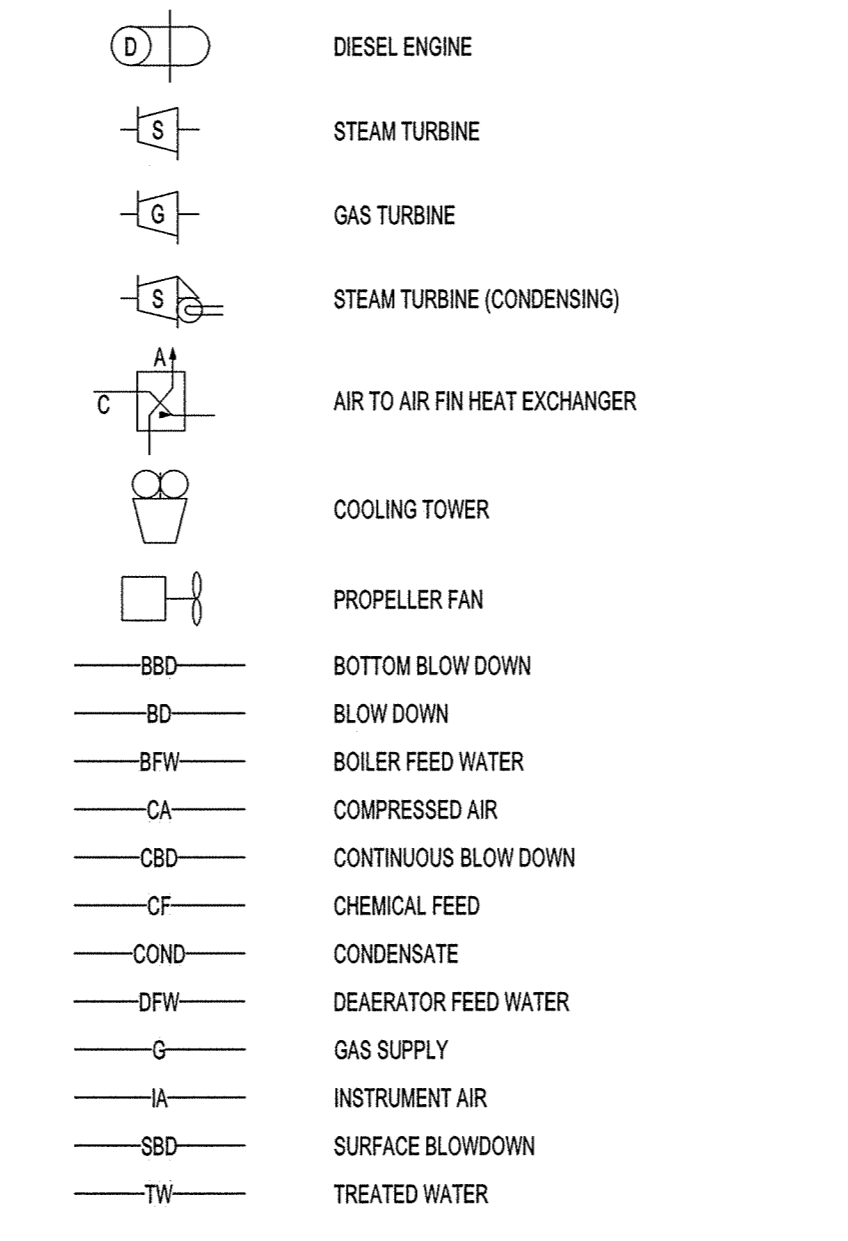
MECHANICAL DRAWING LIST

Table with columns: DRAWING NO., DRAWING TITLE

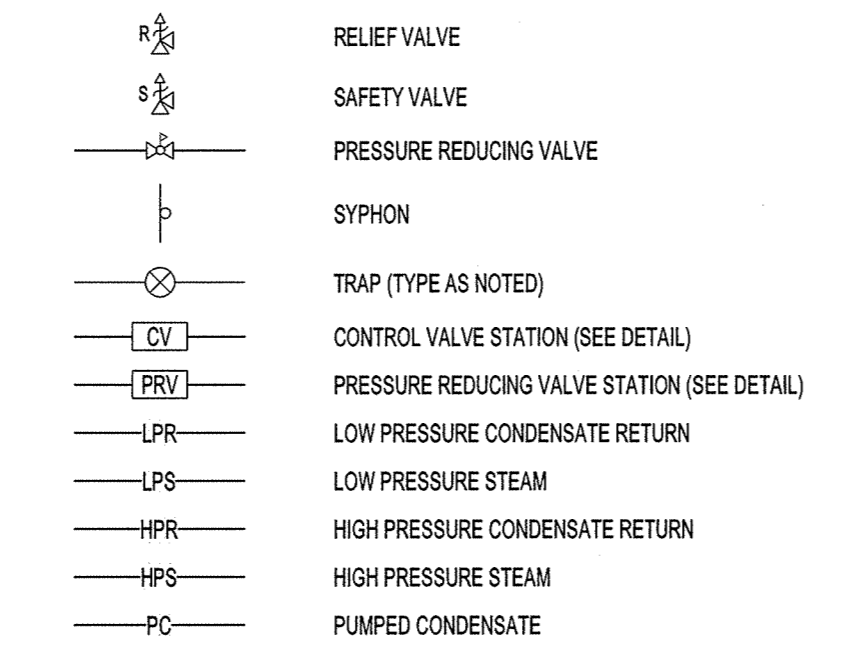
MECHANICAL ABBREVIATIONS

Table listing abbreviations and their meanings, such as AMPERES, AIR CONDITIONING, AIR COOLED CONDENSING UNIT, etc.

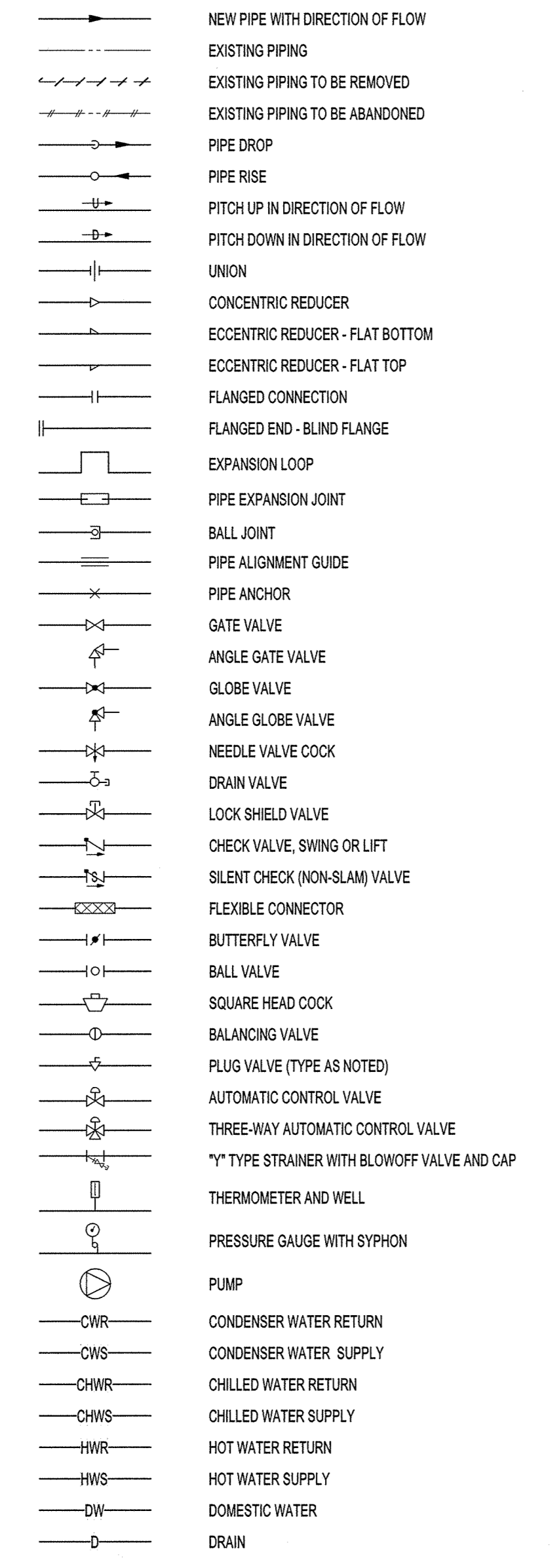
HVAC CENTRAL PLANT SERVICES SYMBOLS



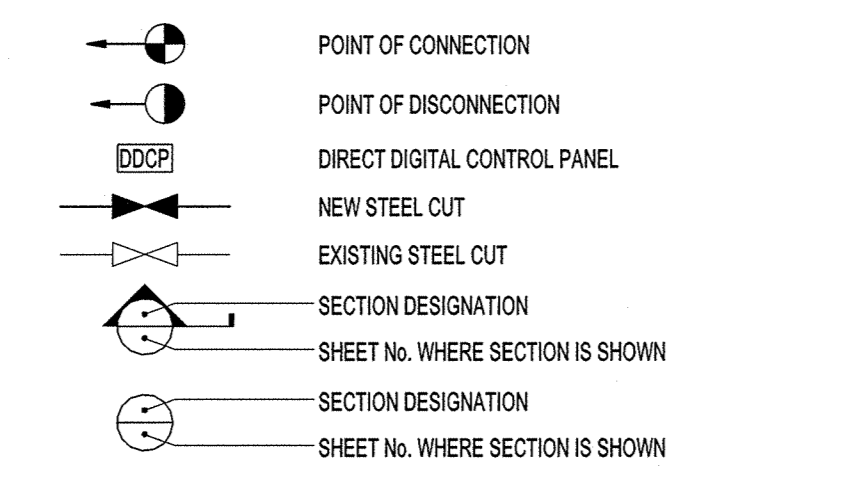
HVAC STEAM SERVICES SYMBOLS



HVAC PIPING SYMBOLS

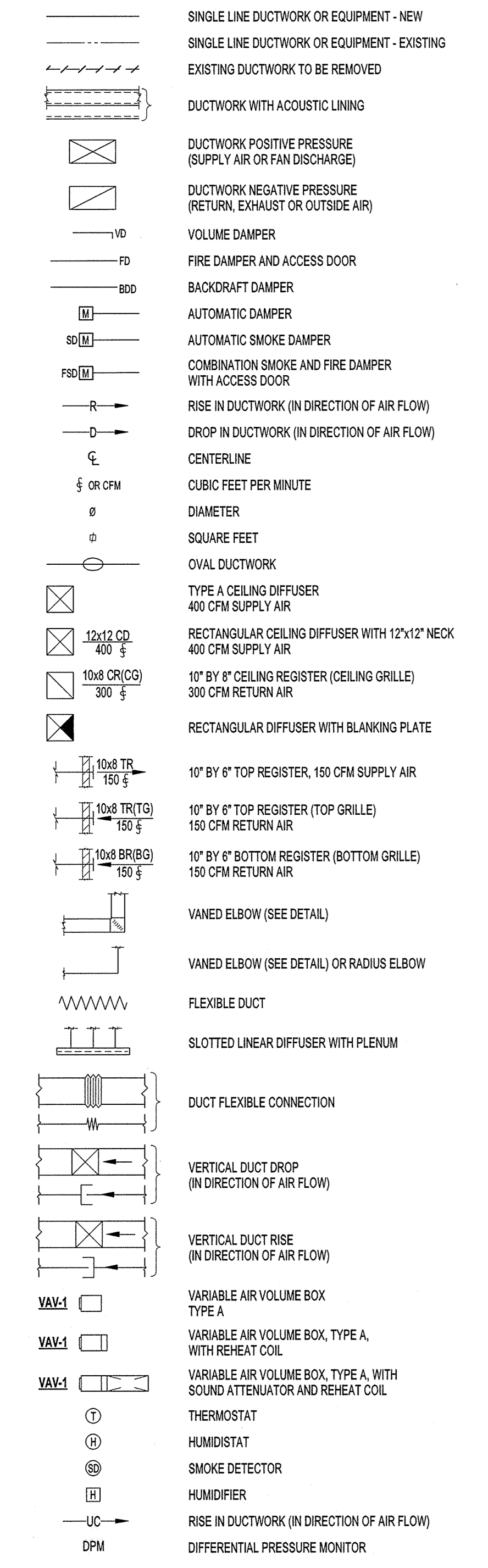


HVAC GENERAL SYMBOLS



MECHANICAL SYMBOL LIST

HVAC DUCTWORK SYMBOLS



HVAC EQUIPMENT DESIGNATIONS

