

MMC - PICU

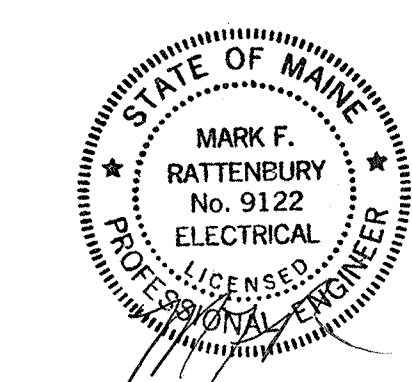
Maine Medical Center

22 Bramhall Street, Portland,
ME 04102

MEP ENGINEER

AKF GROUP, LLC

98 Bedford Street, 2nd Floor
Boston, MA 02111
1 617 737 3111
1 617 737 3311



Revisions

NO	ISSUE	DATE
1	ADDENDUM NO. 1	05-22-15

Sheet Information

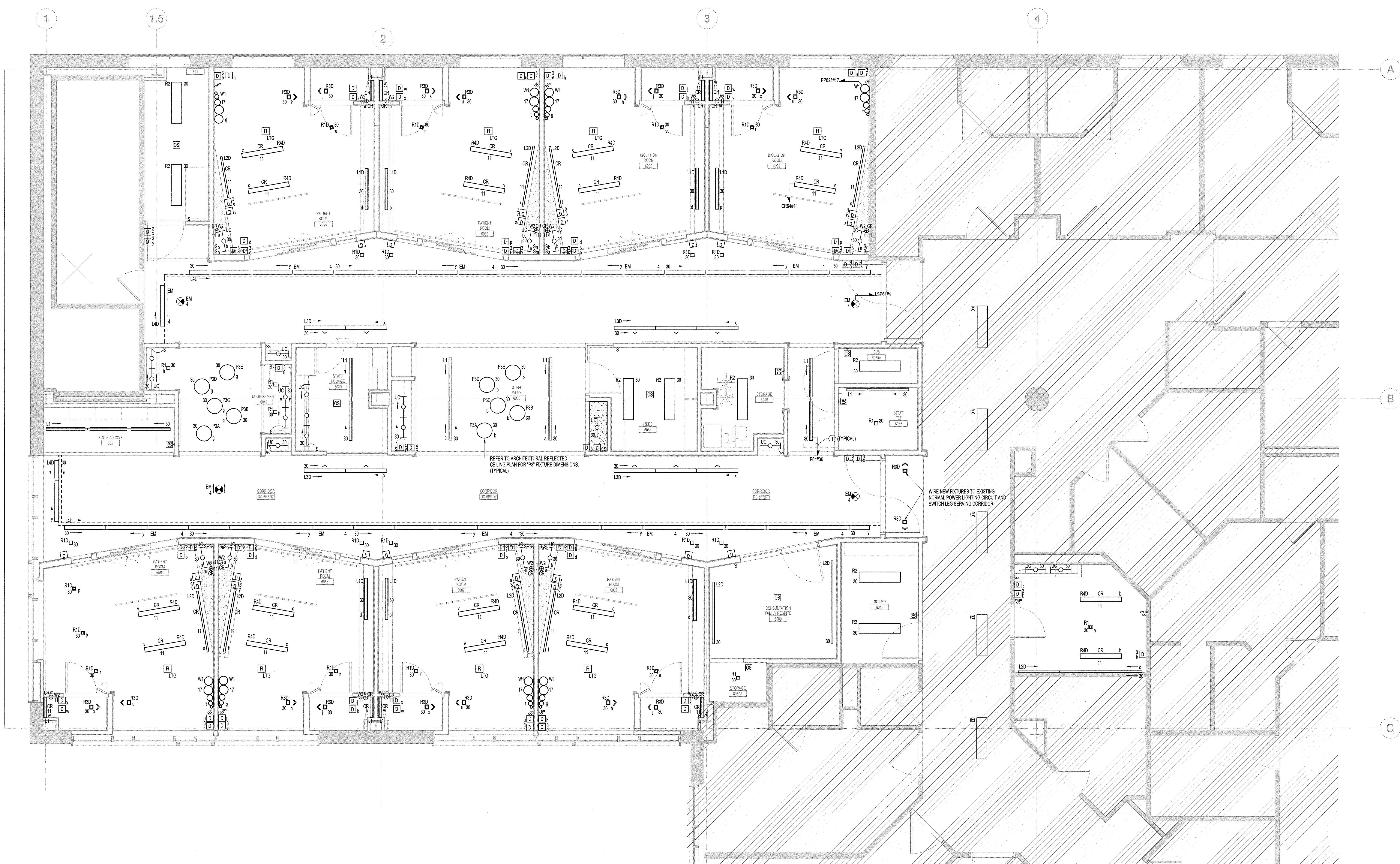
Date	MAY 1, 2015
Job Number	B140185-000
Drawn	GN
Checked	RAC
Approved	RAC

TITLE

ELECTRICAL
FLOOR PLAN
LEVEL 6 -
LIGHTING

Sheet

E03-06



GENERAL NOTES:

- REFER TO DRAWING E03-01 FOR LEGEND, SYMBOLS, ABBREVIATIONS, AND ADDITIONAL GENERAL NOTES.

LIGHTING KEYED NOTES:

- CIRCUIT NUMBER SHOWN TO DENOTE LIMIT OF CIRCUIT ONLY. EXACT CIRCUIT NUMBER SHALL BE FIELD VERIFIED. FURNISH NEW CIRCUIT BREAKER AS INDICATED. CIRCUIT BREAKER CHARACTERISTICS SHALL MATCH EXISTING. CIRCUIT BREAKER MANUFACTURER SHALL MATCH THAT OF THE PANELBOARD IT IS INSTALLED WITHIN. AIC RATING SHALL MATCH EQUIPMENT AND MEET THE AVAILABLE FAULT AT THE POINT OF INSTALLATION.