

CODE COMPLIANCE PLAN
LEGEND

- SMOKE BARRIER WITH TWO HOUR MIN. FIRE RATED CONSTRUCTION
- SMOKE BARRIER WITH ONE HOUR MIN. FIRE RATED CONSTRUCTION
- LIMIT TRANSFER OF SMOKE (NO FIRE-RESISTANT RATING)
- TWO HOUR FIRE BARRIER
- ONE HOUR FIRE BARRIER
- TRAVEL DISTANCE - LONGEST TO AN EXIT
- FEC FIRE EXTINGUISHER & CABINET MAX TRAVEL DISTANCE: 75'-PER TABLE 906.3(1)
- EXTENT OF SUITE
- OUT OF SCOPE
- EXIT / STAIR
- EGRESS PATH AND TRAVEL DISTANCE
- MHO MAGNETIC HOLD OPEN
- EXIT LOCATION - OCCUPANT LOAD AND WIDTH (IN INCHES) WIDTH REQUIRED | ACTUAL POPULATION WIDTH PROVIDED | ALLOWED POPULATION
- EXIT LIGHT WITH ARROW DIR.
- EXIT STAIR
- DOOR RESISTS THE PASSAGE OF SMOKE

OCCUPANT LOAD
CALCULATIONS FOR LEVEL 6

OCCUPANCY	SQ. FTG.	CODE	OCC. LOAD FACTOR	OCC. LOAD	REQ. EXIT WIDTH/OCC.	TOTAL REQ. EXIT WIDTH	TOTAL WIDTH PROVIDED
HEALTH CARE	4870	IBC 100 SPOCC	49	0.15	2.45'	34'	
HEALTH CARE	4870		49		2.45'	34'	

GENERAL CODE SUMMARY

- BASED ON OCCUPANCY TYPE I2 INSTITUTIONAL WITH SPRINKLERS:
- PER SECTION 1014.3 COMMON PATH OF EGRESS TRAVEL: 100 FEET
- PER TABLE 1016.1 MAXIMUM ALLOWABLE TRAVEL DISTANCE: 300 FEET
- PER SECTION 1017.3 MAXIMUM ALLOWABLE DEAD-END DISTANCE: 50 FEET
- PER TABLE 1004.1.1 FLOOR AREA PER OCCUPANT (BUSINESS): 100 GROSS SF
- PER TABLE 1005.1 ALLOWABLE DOOR CAPACITY: 228 @ 34" DOOR, 453 @ 68" DOOR
- PER TABLE 1005.1 ALLOWABLE STAIR CAPACITY: 160 @ 48" STAIR

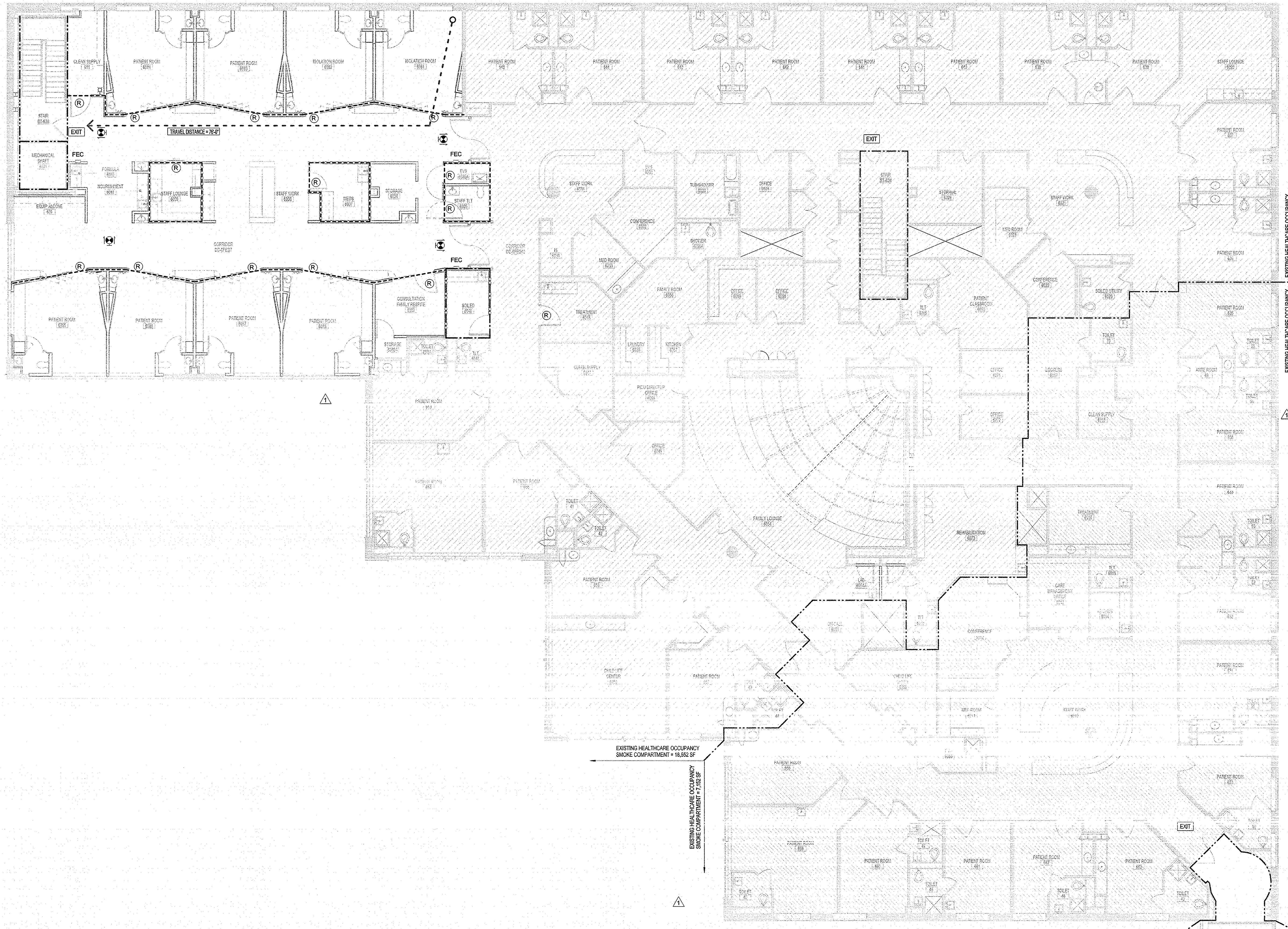
CODE COMPLIANCE PLAN
GENERAL NOTES

ADDRESS:
Maine Medical Center
22 Bramhall Street
Portland, ME 04102

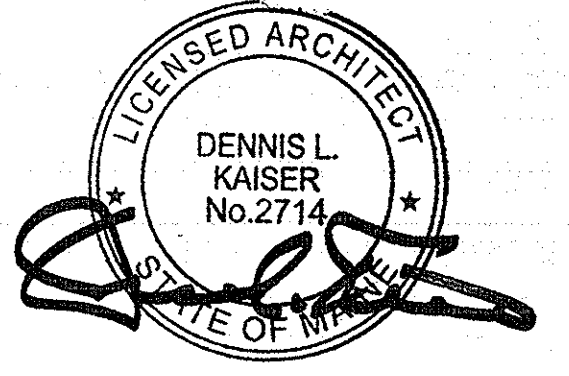
APPLICABLE CODES AND STANDARDS:

Code Type	Applicable Code (Model Code Basis)
Building	2009 International Building Code
Fire Prevention	NFPA 101: Life Safety Code, 2009 Edition Chapter 18: New Health Care Occupancies Chapter 19: Existing Health Care Occupancies Portland Fire Prevention Fire Code 2006 NFPA 1 Required Fire Protection Systems: NFPA 13 sprinkler system (2009 IBC 407.5) Fire alarm system (2009 IBC 407.6) Standpipe system (2009 IBC 906.3.1) Fire extinguishers (2009 IBC 906.1)
Accessibility	Maine Human Rights Commission
Electrical	2011 National Electrical Code
Mechanical	ASHRAE 62.1 - 2007 ASHRAE 62.2 - 2007
Plumbing	2009 Uniform Plumbing Code (with State Amendments)
Energy Conservation	2009 International Energy Conservation Code
Joint Commission	NFPA 101 Applicable Code Year: 2000 Edition

CONSTRUCTION TYPE:
TYPE IIA (TABLE 601)
FIRE SPRINKLERED THROUGHOUT:
YES
OCCUPANCY GROUPS:
OCCUPANCY TYPE I2 INSTITUTIONAL



1 LEVEL 06 - LIFE SAFETY PLAN
1/8" = 1'-0"



Revisions

ISSUED FOR PERMIT	06/08/15
1 ADDENDUM NO. 2	06/01/15
NO	ISSUE DATE

Sheet Information
Date: MAY 1, 2015
Job Number: 152168.009
Drawn: Author
Checked: sc
Approved: Approver
Title

LIFE SAFETY PLAN
LEVEL 6

Sheet
A01-06