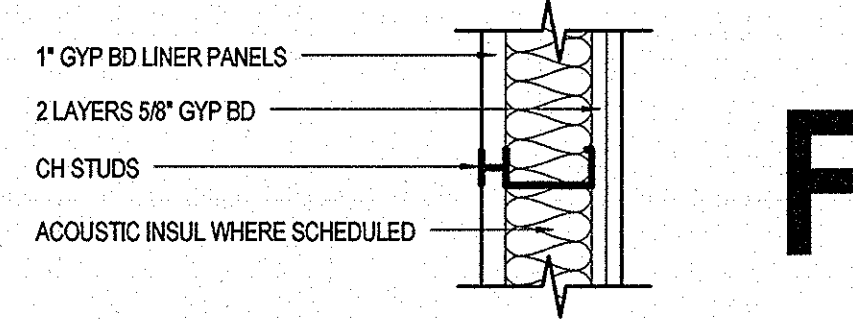


**PARTITION TYPES
GENERAL NOTES**

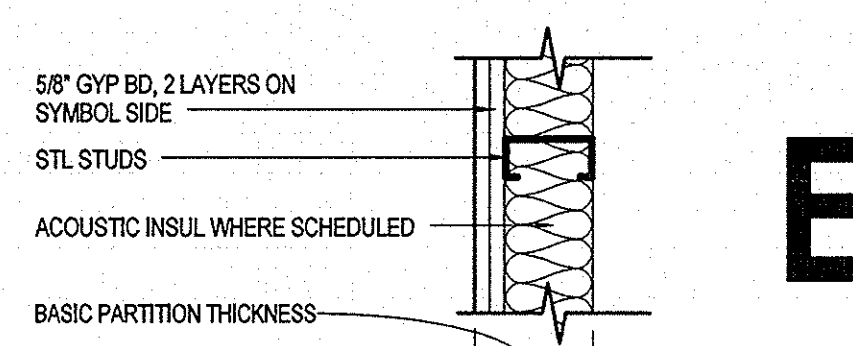
- REFER TO FLOOR PLAN A04-XX SERIES FOR LOCATION OF PARTITION TYPES. ALL PARTITIONS ARE TYPE "M1" UNLESS NOTED OTHERWISE. NOT ALL PARTITION TYPES SHOWN ARE UTILIZED.
 - REFER TO A00-20, A05-06 & A10-XX SERIES FOR FINISHES ON PARTITIONS. PARTITION TYPES IN CHARTS REFER TO BASE WALL ONLY.
 - WHEN BLOCKING OR STRAPPING IS REQUIRED IN A PARTITION, USE MINIMUM 0.033 THICK STUDS.
 - ISOLATE NON-LOAD BEARING FRAMING FROM STRUCTURAL ELEMENTS TO PREVENT THE TRANSFER OF STRUCTURAL LOADS DUE TO DEFLECTION. UTILIZE LOOSE STUDS IN CEILING RUNNERS, DEFLECTION CHANNELS, OR A PROPRIETARY SYSTEM AS REQUIRED TO COMPENSATE FOR ANTICIPATED VERTICAL AND HORIZONTAL DEFLECTION. REFER TO A00-210 AND A00-22 SERIES "CODE COMPLIANCE DETAILS" FOR ISOLATION DETAILS FOR RATED PARTITIONS.
- FIRE RATED PARTITIONS**
- REFER TO A01-08, A03-210, AND A03-22 "CODE COMPLIANCE DETAILS" FOR REFERENCES AND DETAILS RELATED TO RATED PENETRATIONS, FIRE-RESISTIVE JOINTS, RATED HORIZONTAL FRAMING, WALL PRIORITY, AND PROJECT SPECIFIC APPLICATIONS.
- ACOUSTICAL**
- ALL ACOUSTICALLY CLASSIFIED PARTITIONS SHALL BE CONSTRUCTED IN ACCORDANCE TO THE REFERENCED TEST. HOWEVER, AT NO TIME SHALL ACOUSTIC DETAILS TAKE PRECEDENCE OVER FIRE RESISTIVE DETAILS.
 - STAGGER AND SEAL ALL JOINTS ON MULTIPLE GYPSUM BOARD LAYER PARTITIONS.
 - SEAL PARTITIONS AIR TIGHT AT FLOORS, SIDES, AND CEILINGS ON BOTH SIDES WITH NON-HARDENING ACOUSTICAL SEALANT IN ACCORDANCE WITH REFERENCED TEST.
 - ALL BATTS AND BLANKETS IN RATED PARTITIONS MUST BEAR THE REQUIRED UL FIRE-RESISTANCE CLASSIFICATION MARKINGS. REFER TO CODE COMPLIANCE DETAILS.
 - AVOID COMPRESSING ACOUSTICAL BATT INSULATION AT BLOCKING AND RECESSED ITEMS IN ACOUSTIC RATED WALLS.
 - REFER TO "INTERIOR PARTITION DETAILS" SHEET FOR ADDITIONAL INSTALLATION REQUIREMENTS.
 - OUTLETS ON OPPOSITE SIDES OF ACOUSTICALLY CLASSIFIED PARTITIONS SHOULD BE SEPARATED BY A MINIMUM OF ONE STUD.
 - ALL BOXES REQUIRED TO BE ACOUSTICALLY SEALED SHALL BE SEALED AND VERIFIED PRIOR TO CLOSING IN PARTITIONS.



	F1L	F1C	F2L	F2C	F3L	F3C	F4L	F4C	F5L	F5C	F6L	F6C	F7L	F7C	F8L	F8C
2-HR RATED WITH GYP BD TO STRUCTURE ABOVE	(F10)	(F20)	(F30)	(F40)	(F50)	(F60)	(F70)	(F80)								
NON-RATED WITH GYP BD TO STRUCTURE ABOVE	(F11)	(F21)	(F31)	(F41)	(F51)	(F61)	(F71)	(F81)								
STUD SIZE	2 1/2"	2 1/2"	4 5/8"	4 5/8"	4"	4"	6"	6"								
BASIC PARTITION THICKNESS	3 3/4"	3 3/4"	5 7/8"	5 7/8"	5 1/4"	5 1/4"	7 1/4"	7 1/4"								
ACOUSTICAL INSULATION THICKNESS	-	1 1/2"	-	3 5/8"	-	3"	-	5"								
ACOUSTICAL TEST NUMBER																

NOTE:
1. STC IS BASED ON 0.018" THICK (25 GA) STUDS.

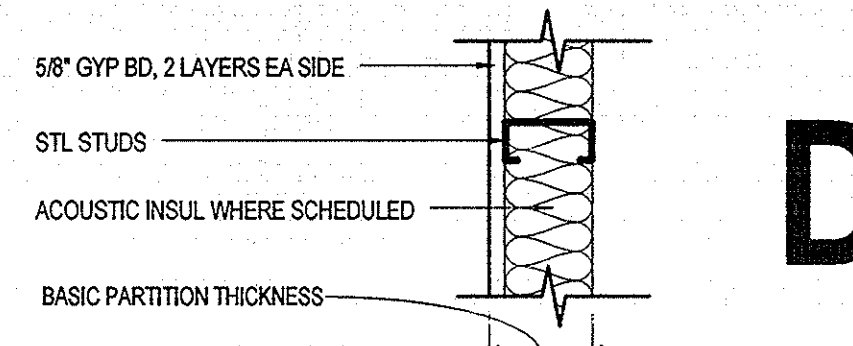
C1010.10-4F



	E1L	E1C	E2L	E2C	E3L	E3C	E4L	E4C	E5L	E5C	E6L	E6C	E7L	E7C	E8L	E8C
NON-RATED WITH GYP BD TO STRUCTURE ABOVE	(E11)	(E11)	(E21)	(E21)	(E31)	(E31)	(E41)	(E41)	(E51)	(E51)	(E61)	(E61)	(E71)	(E71)	(E81)	(E81)
NON-RATED WITH GYP BD TO 6" ABOVE CEILING	(E12)	(E12)	(E22)	(E22)	(E32)	(E32)	(E42)	(E42)	(E52)	(E52)	(E62)	(E62)	(E72)	(E72)	(E82)	(E82)
NON-RATED WITH STUDS & GYP BD TO FINISHED CEILING	(E13)	(E13)	(E23)	(E23)	(E33)	(E33)	(E43)	(E43)	(E53)	(E53)	(E63)	(E63)	(E73)	(E73)	(E83)	(E83)
STUD SIZE	2 1/2"	2 1/2"	2 1/2"	2 1/2"	3 5/8"	3 5/8"	4"	4"	4"	4"	6"	6"	6"	6"	1 1/2"	1 1/2"
BASIC PARTITION THICKNESS	3 3/4"	3 3/4"	3 3/4"	3 3/4"	4 7/8"	4 7/8"	5 1/4"	5 1/4"	5 1/4"	5 1/4"	7 1/4"	7 1/4"	7 1/4"	7 1/4"	2 3/4"	2 3/4"
ACOUSTICAL INSULATION THICKNESS	-	-	2"	2"	-	-	3"	3"	-	-	5 1/2"	5 1/2"	-	-	1"	1"
ACOUSTICAL TEST NUMBER	NOTE 1	NOTE 1	NOTE 1	NOTE 1	NOTE 1	NOTE 1	NOTE 1	NOTE 1	NOTE 1	NOTE 1	NOTE 1	NOTE 1	NOTE 1	NOTE 1	NOTE 1	NOTE 1

NOTE:
1. STCS ARE PREDICTED USING THE "INSUL" COMPUTER PROGRAM.
2. STCS ARE BASED ON 0.018" THICK (25 GA) STUDS.

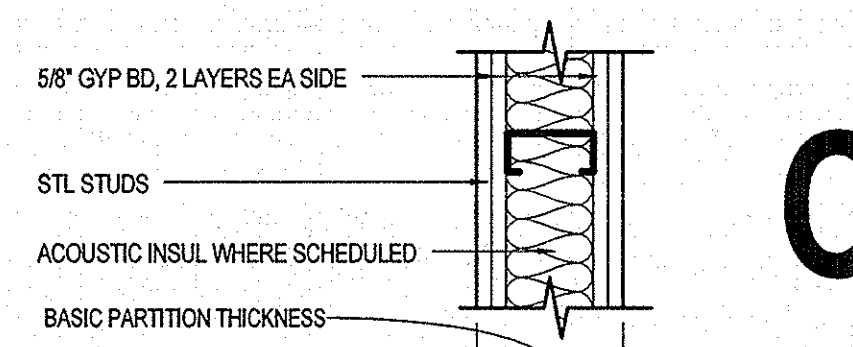
C1010.10-4E



	D1L	D1C	D2L	D2C	D3L	D3C	D4L	D4C	D5L	D5C	D6L	D6C	D7L	D7C	D8L	D8C
NON-RATED WITH GYP BD TO STRUCTURE ABOVE	(D11)	(D11)	(D21)	(D21)	(D31)	(D31)	(D41)	(D41)	(D51)	(D51)	(D61)	(D61)	(D71)	(D71)	(D81)	(D81)
NON-RATED WITH GYP BD TO 6" ABOVE CEILING	(D12)	(D12)	(D22)	(D22)	(D32)	(D32)	(D42)	(D42)	(D52)	(D52)	(D62)	(D62)	(D72)	(D72)	(D82)	(D82)
NON-RATED WITH STUDS & GYP BD TO FINISHED CEILING	(D13)	(D13)	(D23)	(D23)	(D33)	(D33)	(D43)	(D43)	(D53)	(D53)	(D63)	(D63)	(D73)	(D73)	(D83)	(D83)
STUD SIZE	2 1/2"	2 1/2"	2 1/2"	2 1/2"	3 5/8"	3 5/8"	4"	4"	4"	4"	6"	6"	6"	6"	1 1/2"	1 1/2"
BASIC PARTITION THICKNESS	3 1/8"	3 1/8"	3 1/8"	3 1/8"	4 1/4"	4 1/4"	4 5/8"	4 5/8"	4 5/8"	4 5/8"	6 5/8"	6 5/8"	6 5/8"	6 5/8"	2 1/8"	2 1/8"
ACOUSTICAL INSULATION THICKNESS	-	-	2"	2"	-	-	3"	3"	-	-	5 1/2"	5 1/2"	-	-	1"	1"
ACOUSTICAL TEST NUMBER	NOTE 1	NOTE 1	NOTE 1	NOTE 1	NOTE 1	NOTE 1	NOTE 1	NOTE 1	NOTE 1	NOTE 1	NOTE 1	NOTE 1	NOTE 1	NOTE 1	NOTE 1	NOTE 1

NOTE:
1. STCS ARE PREDICTED USING THE "INSUL" COMPUTER PROGRAM.
2. STCS ARE BASED ON 0.018" THICK (25 GA) STUDS.

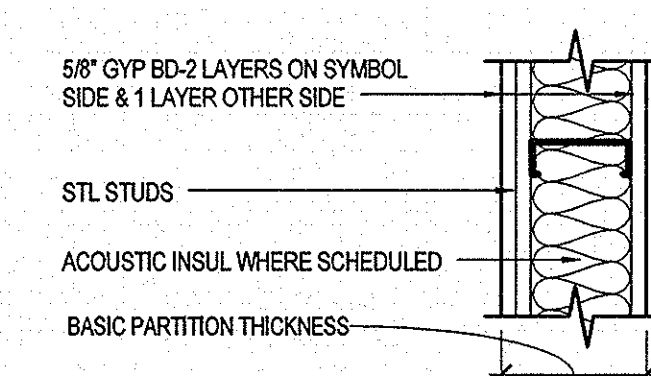
C1010.10-4D



	C1L	C1C	C2L	C2C	C3L	C3C	C4L	C4C	C5L	C5C	C6L	C6C	C7L	C7C	C8L	C8C
2-HR RATED WITH GYP BD TO STRUCTURE ABOVE	(C10)	(C10)	(C20)	(C20)	(C30)	(C30)	(C40)	(C40)	(C50)	(C50)	(C60)	(C60)	(C70)	(C70)	(C80)	(C80)
NON-RATED WITH GYP BD TO STRUCTURE ABOVE	(C11)	(C11)	(C21)	(C21)	(C31)	(C31)	(C41)	(C41)	(C51)	(C51)	(C61)	(C61)	(C71)	(C71)	(C81)	(C81)
STUD SIZE	2 1/2"	2 1/2"	2 1/2"	2 1/2"	3 5/8"	3 5/8"	4"	4"	4"	4"	6"	6"	6"	6"	6"	6"
BASIC PARTITION THICKNESS	5"	5"	5"	5"	6 1/8"	6 1/8"	6 1/2"	6 1/2"	6 1/2"	6 1/2"	8 1/2"	8 1/2"	8 1/2"	8 1/2"	8 1/2"	8 1/2"
ACOUSTICAL INSULATION THICKNESS	-	-	2"	2"	-	-	3"	3"	-	-	3"	3"	-	-	5 1/2"	5 1/2"
ACOUSTICAL TEST NUMBER	SIM USG 770408	SIM USG 770408	SIM USG 770408	SIM USG 770408	SIM USG 770408	SIM USG 770408	SIM USG 770408	SIM USG 770408	SIM USG 770408	SIM USG 770408	SIM USG 770408	SIM USG 770408	SIM USG 770408	SIM USG 770408	SIM USG 770408	SIM USG 770408
FIRE TEST NUMBER (WHERE APPLICABLE)	UL DES U411	UL DES U411	UL DES U411	UL DES U411	UL DES U411	UL DES U411	UL DES U411	UL DES U411	UL DES U411	UL DES U411	UL DES U411	UL DES U411	UL DES U411	UL DES U411	UL DES U411	UL DES U411

NOTE:
1. STC IS MODIFIED FROM THE REFERENCE.
2. STC IS PREDICTED USING THE "INSUL" COMPUTER PROGRAM.
3. STC IS BASED ON 0.018" THICK (25 GA) STUDS.

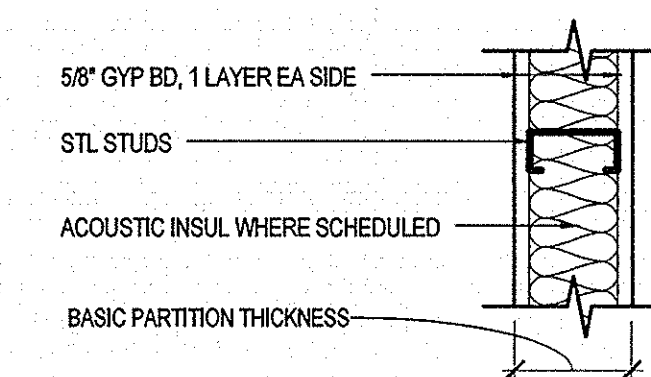
C1010.10-4C



	B1L	B1C	B2L	B2C	B3L	B3C	B4L	B4C	B5L	B5C	B6L	B6C	B7L	B7C	B8L	B8C
1-HR RATED WITH GYP BD TO STRUCTURE ABOVE	(B10)	(B10)	(B20)	(B20)	(B30)	(B30)	(B40)	(B40)	(B50)	(B50)	(B60)	(B60)	(B70)	(B70)	(B80)	(B80)
NON-RATED WITH GYP BD TO STRUCTURE ABOVE	(B11)	(B11)	(B21)	(B21)	(B31)	(B31)	(B41)	(B41)	(B51)	(B51)	(B61)	(B61)	(B71)	(B71)	(B81)	(B81)
NON-RATED WITH GYP BD TO 6" ABOVE CEILING	(B12)	(B12)	(B22)	(B22)	(B32)	(B32)	(B42)	(B42)	(B52)	(B52)	(B62)	(B62)	(B72)	(B72)	(B82)	(B82)
NON-RATED WITH STUDS & GYP BD TO FINISHED CEILING	(B13)	(B13)	(B23)	(B23)	(B33)	(B33)	(B43)	(B43)	(B53)	(B53)	(B63)	(B63)	(B73)	(B73)	(B83)	(B83)
STUD SIZE	2 1/2"	2 1/2"	2 1/2"	2 1/2"	3 5/8"	3 5/8"	4"	4"	4"	4"	6"	6"	6"	6"	6"	6"
BASIC PARTITION THICKNESS	4 3/8"	4 3/8"	4 3/8"	4 3/8"	5 1/2"	5 1/2"	5 7/8"	5 7/8"	5 7/8"	5 7/8"	7 7/8"	7 7/8"	7 7/8"	7 7/8"	7 7/8"	7 7/8"
ACOUSTICAL INSULATION THICKNESS	-	-	2"	2"	-	-	3"	3"	-	-	5 1/2"	5 1/2"	-	-	1"	1"
ACOUSTICAL TEST NUMBER	SIM TL 69-148	SIM SA 800504	SIM TL 69-148	SIM SA 800504	SIM TL 69-148	SIM SA 800504	SIM TL 69-148	SIM SA 800504	SIM TL 69-148	SIM SA 800504	SIM TL 69-148	SIM SA 800504	SIM TL 69-148	SIM SA 800504	SIM TL 69-148	SIM SA 800504
FIRE TEST NUMBER (WHERE APPLICABLE)	UL DES U419	UL DES U419	UL DES U419	UL DES U419	UL DES U419	UL DES U419	UL DES U419	UL DES U419	UL DES U419	UL DES U419	UL DES U419	UL DES U419	UL DES U419	UL DES U419	UL DES U419	UL DES U419

NOTE:
1. REVEALS ARE ACCEPTABLE IN THE OUTER LAYER OF DOUBLE GYPSUM BOARD AND STILL MAINTAIN THE 1-HR RATING.
2. STC IS PREDICTED USING "INSUL" COMPUTER PROGRAM.
3. STC IS BASED ON 0.018" THICK (25 GA) STUDS.

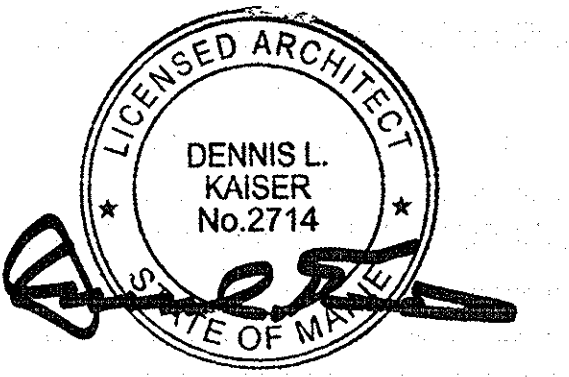
C1010.10-4B



	A1L	A1C	A2L	A2C	A3L	A3C	A4L	A4C	A5L	A5C	A6L	A6C	A7L	A7C	A8L	A8C
1-HR RATED WITH GYP BD TO STRUCTURE ABOVE	(A10)	(A10)	(A20)	(A20)	(A30)	(A30)	(A40)	(A40)	(A50)	(A50)	(A60)	(A60)	(A70)	(A70)	(A80)	(A80)
NON-RATED WITH GYP BD TO STRUCTURE ABOVE (SMOKE RESIST)	(A11)	(A11)	(A21)	(A21)	(A31)	(A31)	(A41)	(A41)	(A51)	(A51)	(A61)	(A61)	(A71)	(A71)	(A81)	(A81)
NON-RATED WITH GYP BD TO 6" ABOVE CEILING	(A12)	(A12)	(A22)	(A22)	(A32)	(A32)	(A42)	(A42)	(A52)	(A52)	(A62)	(A62)	(A72)	(A72)	(A82)	(A82)
NON-RATED WITH STUDS & GYP BD TO FINISHED CEILING	(A13)	(A13)	(A23)	(A23)	(A33)	(A33)	(A43)	(A43)	(A53)	(A53)	(A63)	(A63)	(A73)	(A73)	(A83)	(A83)
STUD SIZE	2 1/2"	2 1/2"	2 1/2"	2 1/2"	3 5/8"	3 5/8"	4"	4"	4"	4"	6"	6"	6"	6"	6"	6"
BASIC PARTITION THICKNESS	3 3/4"	3 3/4"	3 3/4"	3 3/4"	4 7/8"	4 7/8"	4 7/8"	4 7/8"	5 1/4"	5 1/4"	5 1/4"	5 1/4"	7 1/4"	7 1/4"	7 1/4"	7 1/4"
ACOUSTICAL INSULATION THICKNESS	-	-	2"	2"	-	-	3"	3"	-	-	5 1/2"	5 1/2"	-	-	1"	1"
ACOUSTICAL TEST NUMBER	SIM USG 860808	SIM SA 831001	SIM USG 860808	SIM USG 860808	SIM USG 860808	SIM USG 860808	SIM USG 860808	SIM USG 860808	SIM USG 860808	SIM SA 870717	SIM USG 860808	SIM SA 870717	SIM USG 860808	SIM SA 870717	SIM USG 860808	SIM SA 870717
FIRE TEST NUMBER (WHERE APPLICABLE)	UL DES U419	UL DES U465	UL DES U465	UL DES U465	UL DES U465	UL DES U465	UL DES U465	UL DES U465	UL DES U465	UL DES U465	UL DES U465	UL DES U465	UL DES U465	UL DES U465	UL DES U465	UL DES U465

NOTE:
1. STC IS PREDICTED USING THE "INSUL" COMPUTER PROGRAM.
2. STC IS MODIFIED FROM THE REFERENCE.
3. STC IS BASED ON 0.018" THICK (25 GA) STUDS.
4. WHERE AN "X" NEXT TO THE PARTITION TAG, PROVIDE 3/4" PLYWOOD BEHIND THE GYP BD ON THE STORE ROOM SIDE.

C1010.10-4A



Revisions

NO	ISSUED FOR PERMIT	DATE

Sheet Information
Date: MAY 1, 2015
Job Number: 152168.009
Drawn: Author
Checked: sc
Approved: Approver
Title

PARTITION TYPES

Sheet
A00-20