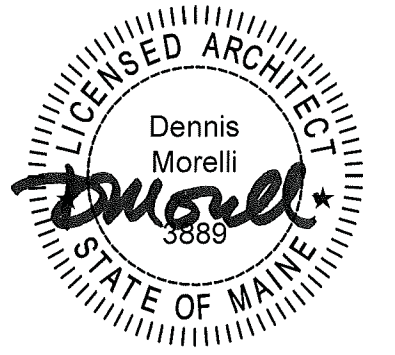


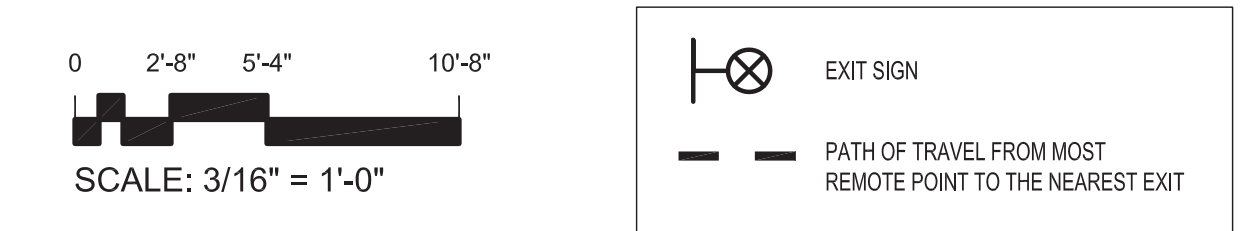
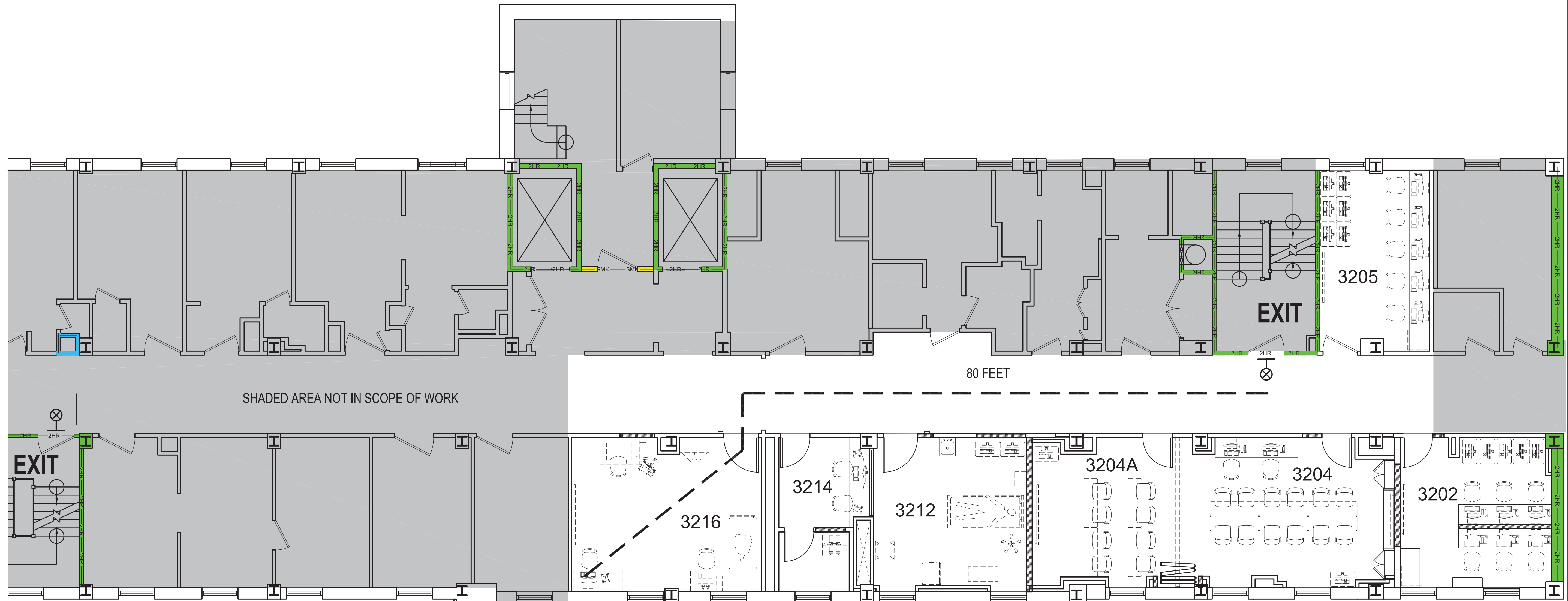
Consultants



**Bramhall Team
Training Facility**

Campus
Bramhall
Building
Pavilion A
Floor
Third

Revisions



Code Compliance

Applicable Codes	IBC/IEBC 2009 NFPA 101 ADA 2010
Existing Construction	Type 1A (IBC) Type 1 (332) (NFPA)
Sprinklers	New NFPA 13 Supervised system to be installed in areas within scope of work. (Currently no coverage)
Occupancy	Inpatient Healthcare/Institutional
Work Class	Minor Rehabilitation (NFPA) Level 2 Alteration (IEBC)

Code Analysis per NFPA 101 (2009) & IBC 2009

Occupancy: A. Existing Business (no change in use)
Occupant Load allowed: (100sf pp) x 1746 sf = 17 people
B. Assembly - Less Concentrated Use in Rooms 3204 & 3204A
Occupant Load allowed: (15sf pp) x 508 sf = 34 people

Monitored Fire Alarm system

Common Path of Travel allowed: 100'
Travel Distance Allowed: 200'

No	Revision	Date

Issue	ISSUED FOR PERMIT
Date	4 APRIL 2015
Project #	-
Drawn By	DM
Checked By	DFD

Title

LIFE SAFETY PLAN

Sheet