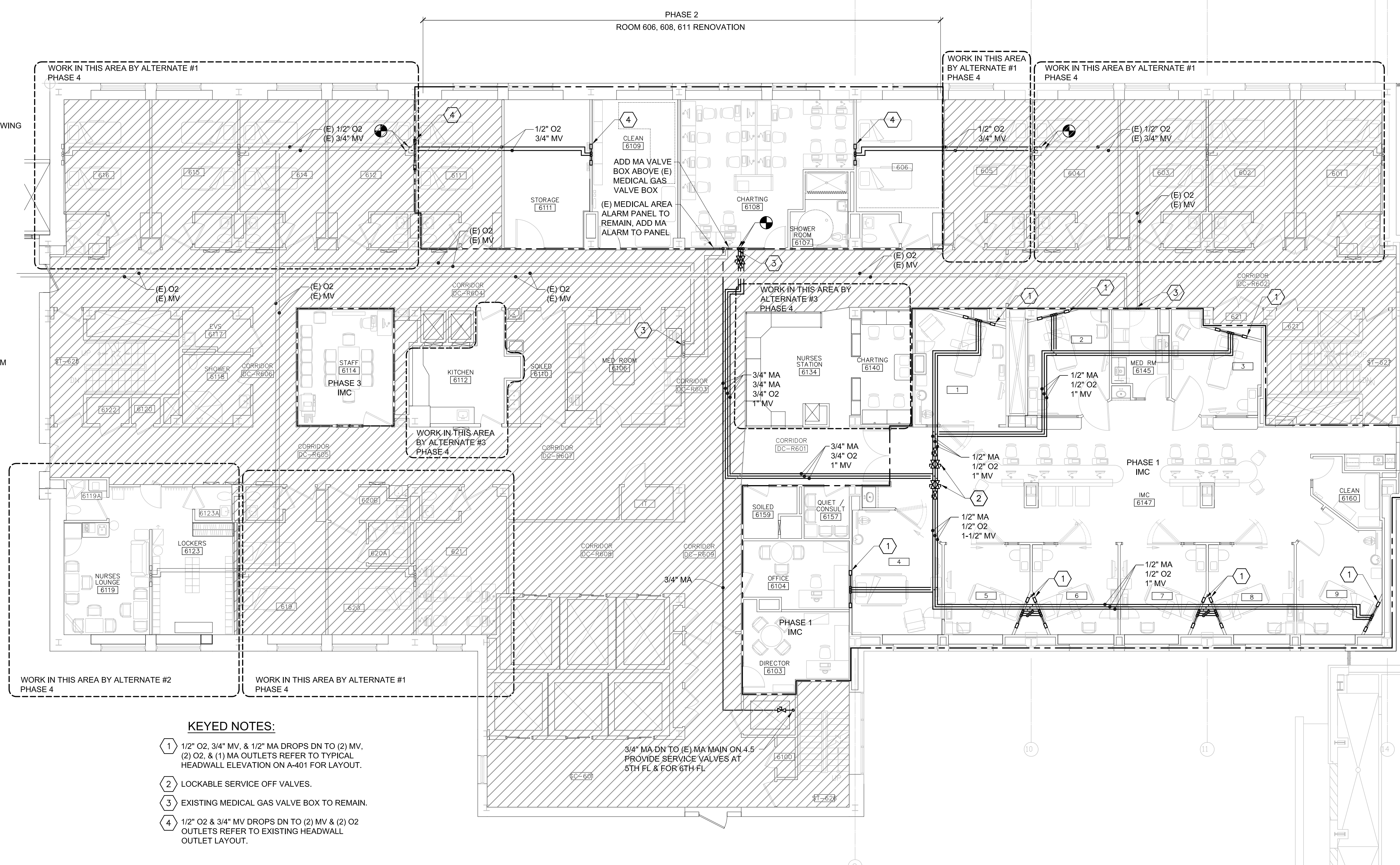


Winton Scott Architects
 5 Milk Street
 Portland, Maine 04101
 207 774 4811
 www.wintonscott.com

Architecture / Planning
 Preservation Architecture
 Interior Architecture



166 Verona Street
 Portland, Maine 04103
 1-207-221-2266
 Fax: 207-221-2266
 Web: www.allied-eng.com



- KEYED NOTES:**
- 1 1/2" O2, 3/4" MV, & 1/2" MA DROPS DN TO (2) MV, (2) O2, & (1) MA OUTLETS REFER TO TYPICAL HEADWALL ELEVATION ON A-401 FOR LAYOUT.
 - 2 LOCKABLE SERVICE OFF VALVES.
 - 3 EXISTING MEDICAL GAS VALVE BOX TO REMAIN.
 - 4 1/2" O2 & 3/4" MV DROPS DN TO (2) MV & (2) O2 OUTLETS REFER TO EXISTING HEADWALL OUTLET LAYOUT.

REVISIONS	
NUMBER	DESCRIPTION

Date:	Drawn By: SCL
Checked By: IAM	Project Mgr:
Project No:	Cad File: 14014_M.DWG
Graphic Scale:	0
Scale:	1"

MEDICAL GAS PIPING OVER ALL PLAN SIXTH FLOOR

R6 Intermediate Care Unit
 Richards Wing Sixth Floor
 PORTLAND MAINE

© copyright 2015 Allied Engineering, Inc.

PL-102

PERMIT SET ~ 03 APRIL 2015 - NOT FOR CONSTRUCTION

N:\Projects\2014\14014 ~ MMC R6 2014 Intermediate Care Unit\00 Drawing Files\14014_P.dwg Apr 03, 2015 - 2:05pm

A1 MEDICAL GAS PIPING OVER ALL PLAN - SIXTH FLOOR
 1/8"=1'-0"

