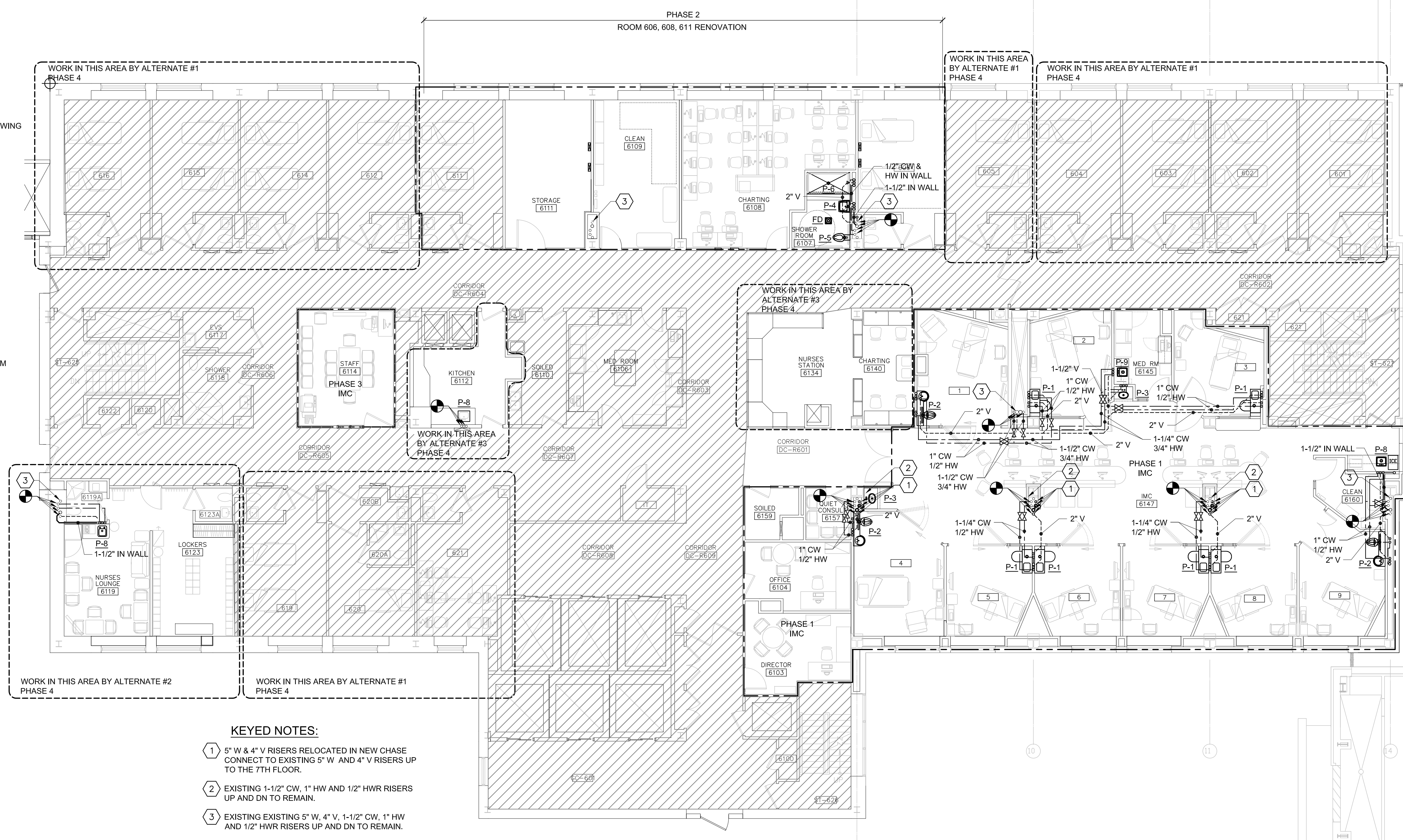


Winton Scott Architects  
5 Milk Street  
Portland, Maine 04101  
207 774 4811  
www.wintonscott.com

Architecture / Planning  
Preservation Architecture  
Interior Architecture



166 Verona Street  
Portland, Maine 04103  
1-207-231-2266  
1-207-231-2266  
Web: www.allied-eng.com



- KEYED NOTES:**
- 1 5" W & 4" V RISERS RELOCATED IN NEW CHASE CONNECT TO EXISTING 5" W AND 4" V RISERS UP TO THE 7TH FLOOR.
  - 2 EXISTING 1-1/2" CW, 1" HW AND 1/2" HWR RISERS UP AND DN TO REMAIN.
  - 3 EXISTING EXISTING 5" W, 4" V, 1-1/2" CW, 1" HW AND 1/2" HWR RISERS UP AND DN TO REMAIN.

REVISIONS	
NUMBER	DESCRIPTION

Date:	
Drawn By: SCL	
Checked By: IAM	
Project Mgr:	
Project No:	
Cad File: 14014_M.DWG	
Graphic Scale:	0
Scale:	1"

**PLUMBING OVER ALL PLAN SIXTH FLOOR**

R6 Intermediate Care Unit  
Richards Wing Sixth Floor  
PORTLAND MAINE

© copyright 2015 Allied Engineering, Inc.

**PL-101**

**PERMIT SET ~ 03 APRIL 2015 - NOT FOR CONSTRUCTION**

N:\Projects\2014\14014 ~ MMC R6 2014 Intermediate Care Unit\00 Drawing Files\14014\_P.dwg Apr 03, 2015 - 2:05pm

A1 PLUMBING OVER ALL PLAN - SIXTH FLOOR  
1/8"=1'-0"

