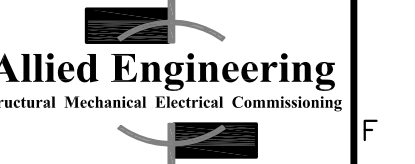
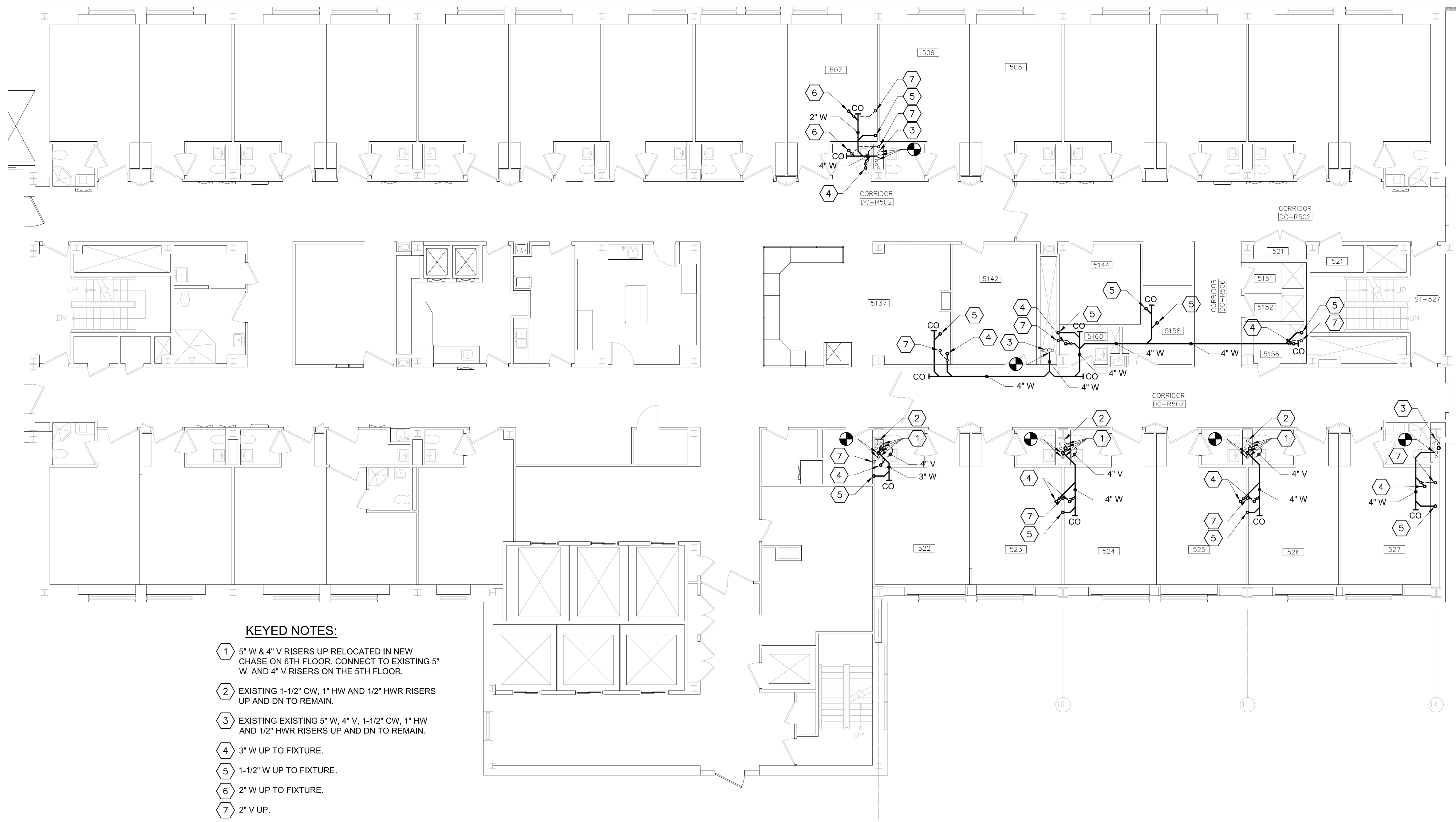


Winton Scott Architects  
5 Milk Street  
Portland, Maine 04101  
207 774 4811  
www.wintonscott.com

Architecture / Planning  
Preservation Architecture  
Interior Architecture



168 Veranda Street  
Portland, Maine 04103  
1-207-231-2266  
F-207-231-2266  
Web: www.allied-eng.com



- KEYED NOTES:**
- 1 5" W & 4" V RISERS UP RELOCATED IN NEW CHASE ON 6TH FLOOR. CONNECT TO EXISTING 5" W AND 4" V RISERS ON THE 5TH FLOOR.
  - 2 EXISTING 1-1/2" CW, 1" HW AND 1/2" HWR RISERS UP AND DN TO REMAIN.
  - 3 EXISTING EXISTING 5" W, 4" V, 1-1/2" CW, 1" HW AND 1/2" HWR RISERS UP AND DN TO REMAIN.
  - 4 3" W UP TO FIXTURE.
  - 5 1-1/2" W UP TO FIXTURE.
  - 6 2" W UP TO FIXTURE.
  - 7 2" V UP.

REVISIONS	
NUMBER	DESCRIPTION

Date: \_\_\_\_\_  
Drawn By: SCL  
Checked By: IAM  
Project Mgr: \_\_\_\_\_  
Project No: \_\_\_\_\_  
Cad File: 14014\_M.DWG  
Graphic Scale: 0  
Scale: 1"

**PLUMBING OVER ALL PLAN FIFTH FLOOR**  
R6 Intermediate Care Unit  
Richards Wing Sixth Floor  
PORTLAND MAINE  
© copyright 2015 Allied Subcontractors, Inc.



**PL-100**

**PERMIT SET ~ 03 APRIL 2015 - NOT FOR CONSTRUCTION**

N:\Projects\2014\14014 - MMC R6 2014 Intermediate Care Unit\00 Drawing Files\14014\_P.dwg Apr 03, 2015 - 2:04pm