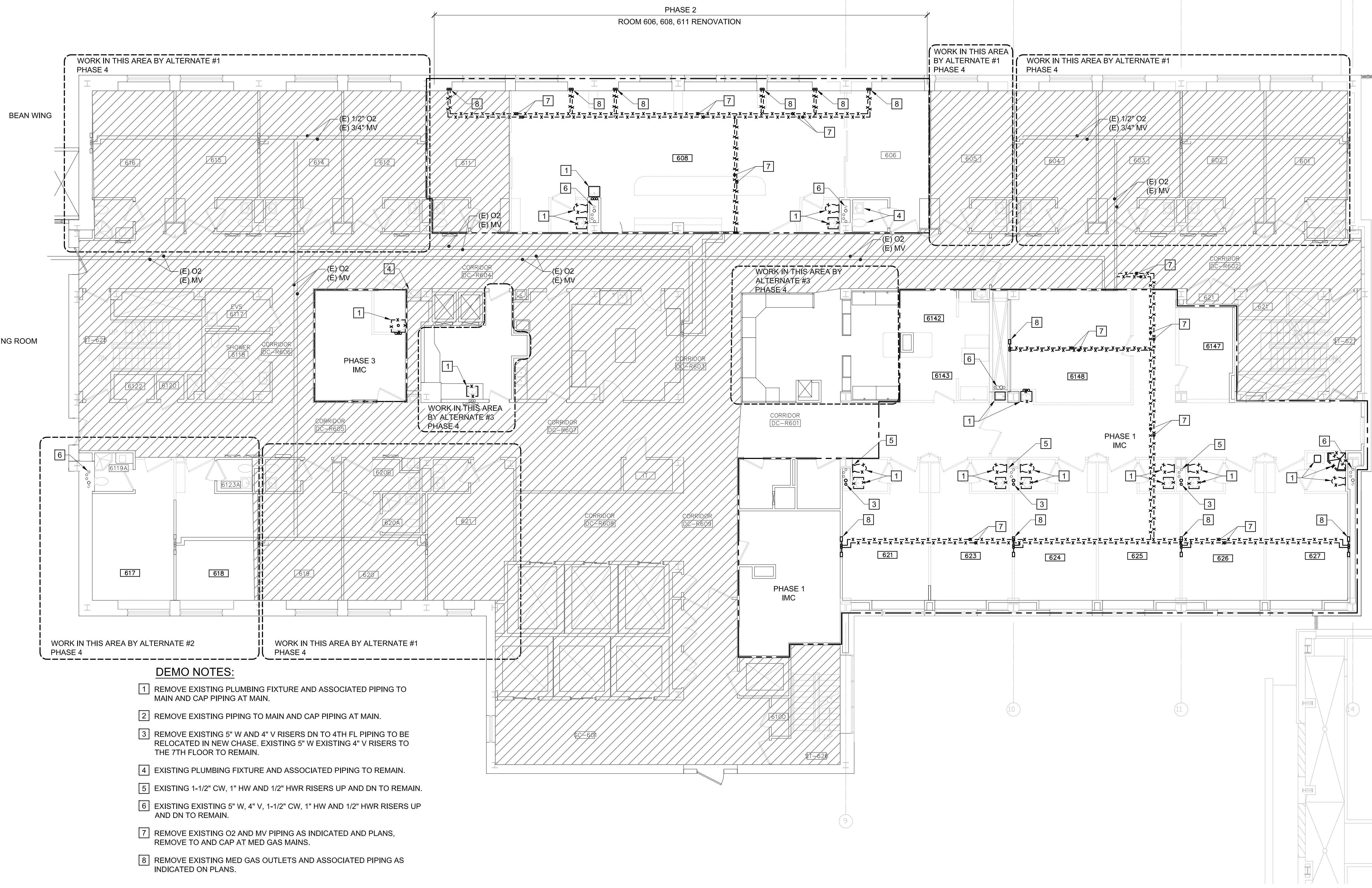


Winton Scott Architects  
 5 Milk Street  
 Portland, Maine 04101  
 207 774 4811  
 www.wintonsscott.com

Architecture / Planning  
 Preservation Architecture  
 Interior Architecture



168 Verona Street  
 Portland, Maine 04103  
 1-207-231-2266  
 F-207-231-2266  
 Web: www.allied-eng.com



**DEMO NOTES:**

- 1 REMOVE EXISTING PLUMBING FIXTURE AND ASSOCIATED PIPING TO MAIN AND CAP PIPING AT MAIN.
- 2 REMOVE EXISTING PIPING TO MAIN AND CAP PIPING AT MAIN.
- 3 REMOVE EXISTING 5" W AND 4" V RISERS DN TO 4TH FL PIPING TO BE RELOCATED IN NEW CHASE. EXISTING 5" W EXISTING 4" V RISERS TO THE 7TH FLOOR TO REMAIN.
- 4 EXISTING PLUMBING FIXTURE AND ASSOCIATED PIPING TO REMAIN.
- 5 EXISTING 1-1/2" CW, 1" HW AND 1/2" HWR RISERS UP AND DN TO REMAIN.
- 6 EXISTING EXISTING 5" W, 4" V, 1-1/2" CW, 1" HW AND 1/2" HWR RISERS UP AND DN TO REMAIN.
- 7 REMOVE EXISTING O2 AND MV PIPING AS INDICATED AND PLANS. REMOVE TO AND CAP AT MED GAS MAINS.
- 8 REMOVE EXISTING MED GAS OUTLETS AND ASSOCIATED PIPING AS INDICATED ON PLANS.

REVISIONS	NUMBER	DATE	BY	DESCRIPTION

Date: \_\_\_\_\_  
 Drawn By: SCL  
 Checked By: IAM  
 Project Mgr: \_\_\_\_\_  
 Project No: \_\_\_\_\_  
 Cad File: 14014\_I.M.DWG  
 Graphic Scale: 0  
 Scale: 1"

**PLUMBING DEMOLITION OVER ALL PLAN SIXTH FLOOR**  
 R6 Intermediate Care Unit  
 Richards Wing Sixth Floor  
 PORTLAND MAINE  
 © copyright 2015 Allied Subcontractors, Inc.

**PD-100**

**PERMIT SET ~ 03 APRIL 2015 - NOT FOR CONSTRUCTION**

N:\Projects\2014\14014 - MMC R6 2014 Intermediate Care Unit\00 Drawing Files\14014\_P.dwg Apr 03, 2015 - 2:04pm

