

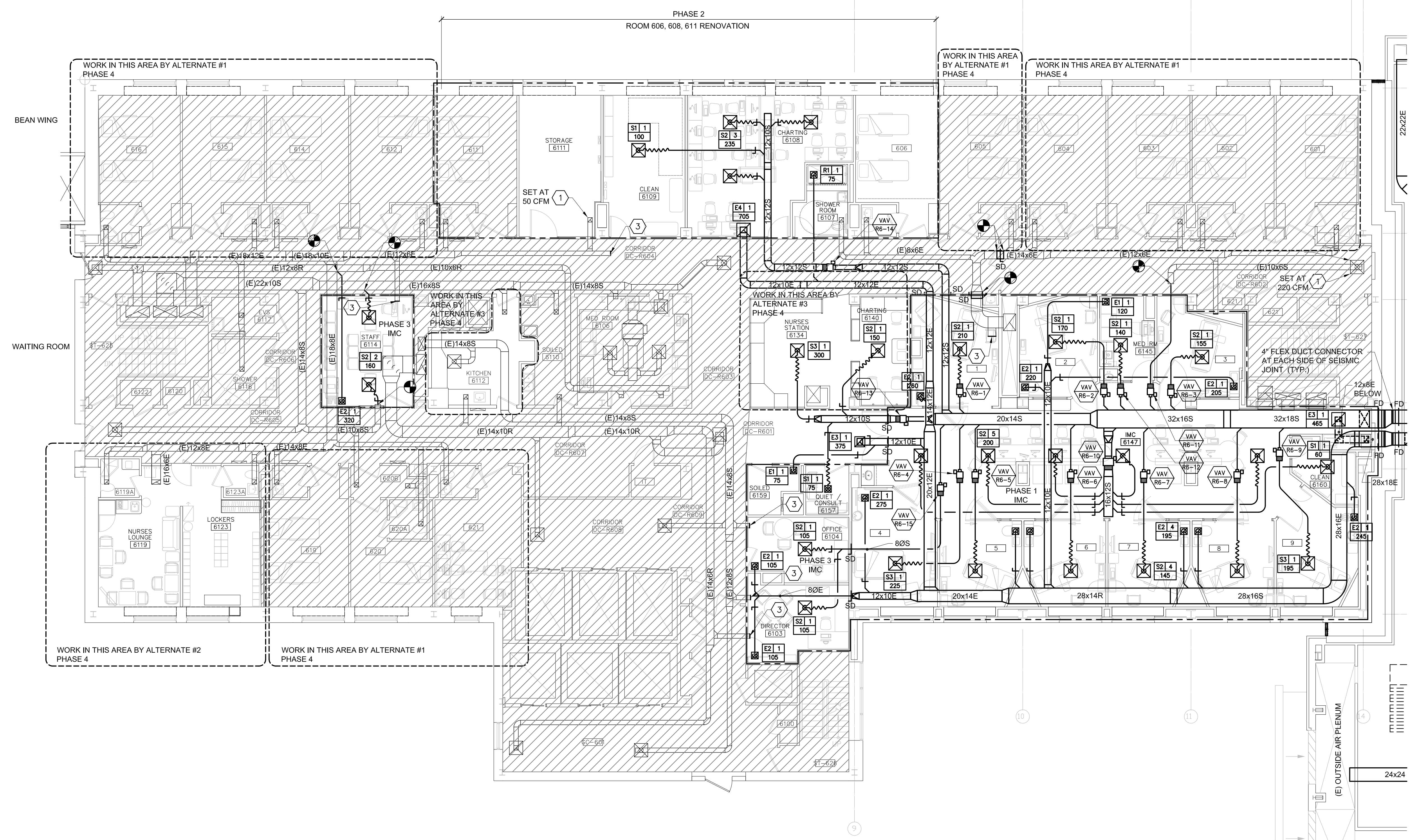
Winton Scott Architects
5 Milk Street
Portland, Maine 04101
207 774 4811
www.wintonsscott.com

Architecture / Planning
Preservation Architecture
Interior Architecture

Allied Engineering
Structural Mechanical Electrical Commissioning

169 Verona Street
Portland, Maine 04103
1-207-231-2266
F-207-231-2266
Web: www.allied-eng.com

- KEYED NOTES:**
- 1 EXISTING DIFFUSER / GRILLE TO REMAIN.
 - 2 EXISTING INDUCTION UNIT TO REMAIN. REPLACE EXISTING PNEUMATIC HEATING CONTROL VALVE, DISABLE COOLING AND CAP AND SEAL OFF OUTSIDE AIR DUCT. CONTROLLED BY ROOM TSTAT.
 - 3 CAP AND SEAL EXISTING DUCTWORK.



REVISIONS	
NUMBER	DESCRIPTION

Date:	Drawn By: SCL
Checked By: IAM	Project Mgr:
Project No:	Cad File: 14014_M.DWG
Graphic Scale:	Graphic Scale: 0

**MECHANICAL OVER ALL PLAN
SIXTH FLOOR**

R6 Intermediate Care Unit
Richards Wing Sixth Floor
PORTLAND MAINE

© copyright 2015 Allied Engineering, Inc.

MH-100

PERMIT SET ~ 03 APRIL 2015 - NOT FOR CONSTRUCTION



PLAN NORTH

N:\Projects\2014\14014 - MMC R6 2014 Intermediate Care Unit\00 Drawing Files\14014_M.dwg Apr 03, 2015 - 2:12pm

A1 MECHANICAL OVER ALL PLAN - SIXTH FLOOR
1/8"=1'-0"