



Winton Scott Architects
5 Milk Street
Portland, Maine 04101
207.774.4811
www.wintonscott.com

Architecture / Planning
Preservation Architecture
Interior Architecture

Allied Engineering
160 Veranda Street
Portland, Maine 04103
207.221.2260
www.allied-eng.com

Mechanical and Electrical
Engineering

Maine Medical Center
Portland, Maine

R6 Intermediate Care Unit

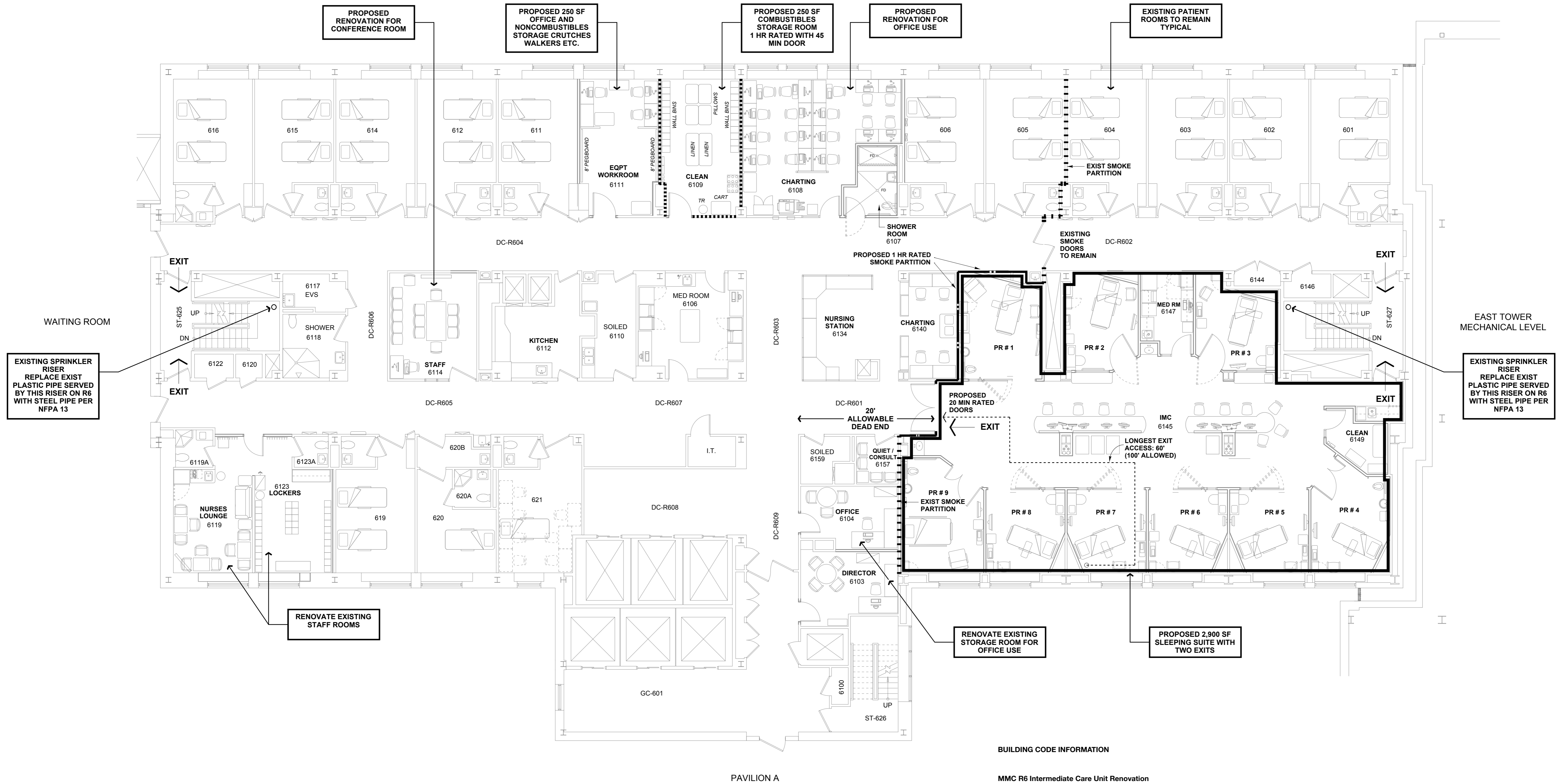
Richards Wing
Sixth Floor

PERMIT SET
NOT FOR CONSTRUCTION
APRIL 3, 2015

Code Information Plan

Scale: 1/8" = 1' - 0"

G 101



- NOTES**
- SMOKE DETECTION PROVIDED IN PATIENT ROOMS 1, 2 AND 3 (NOT UNDER DIRECT LINE OF SIGHT)

- LEGEND**
- EXISTING ONE (1) HOUR RATED SMOKE PARTITION
 - PROPOSED ONE (1) HOUR RATED SMOKE PARTITION
 - PROPOSED ONE (1) HOUR RATED FIRE BARRIER

BUILDING CODE INFORMATION

MMC R6 Intermediate Care Unit Renovation
Building Address: 22 Bramhall Street, Portland, ME 04102

APPLICABLE CODES (Per MUBEC: Maine Uniform Building and Energy Code)

Building	IBC 2009 (International Building Code)
	IEBC 2009 (International Existing Building Code)
Electrical	National Electrical Code 2009
Fire Protection	NFPA Life Safety Code 2009 and NFPA 1 Uniform Fire Code 2003
Mechanical	International Mechanical Code 2009 (ASHRAE 62.1 2007 and 90.1 2007)
Plumbing	Maine State Internal Plumbing Code (UPC 2000)
Energy	IECC 2009 (International Energy Conservation Code)
Accessibility	ADA 2010 (Americans With Disabilities Act)

PROJECT DESCRIPTION:
Repairs and Alterations: Modify Existing Patient Rooms For Use As In Intermediate Care Unit
Existing Height: Nine (9) Stories
Existing Use Group: I - 2
Existing Construction Type: I - B / Fully Sprinklered Supervised [NFPA II (222)]
Plastic Sprinkler Piping On The R6 Floor To Be Removed And Replaced With Steel Pipe Per NFPA 13

BUILDING SUMMARY
Proposed Use Group: I - 2
IEBC Compliance Method: Prescriptive Compliance Method IEBC 101.5.1 & Chapter 3

SQUARE FOOTAGE
Overall Floor Area: 18,745
IMC Sleeping Suite Area: 2,900

