



Winton Scott Architects
5 Milk Street
Portland, Maine 04101
207.774.4811
www.wintonsscott.com

Architecture / Planning
Preservation Architecture
Interior Architecture

Allied Engineering
160 Veranda Street
Portland, Maine 04103
207.221.2260
www.allied-eng.com

Mechanical and Electrical
Engineering

Maine Medical Center
Portland, Maine

R6
Intermediate
Care Unit

Richards Wing
Sixth Floor

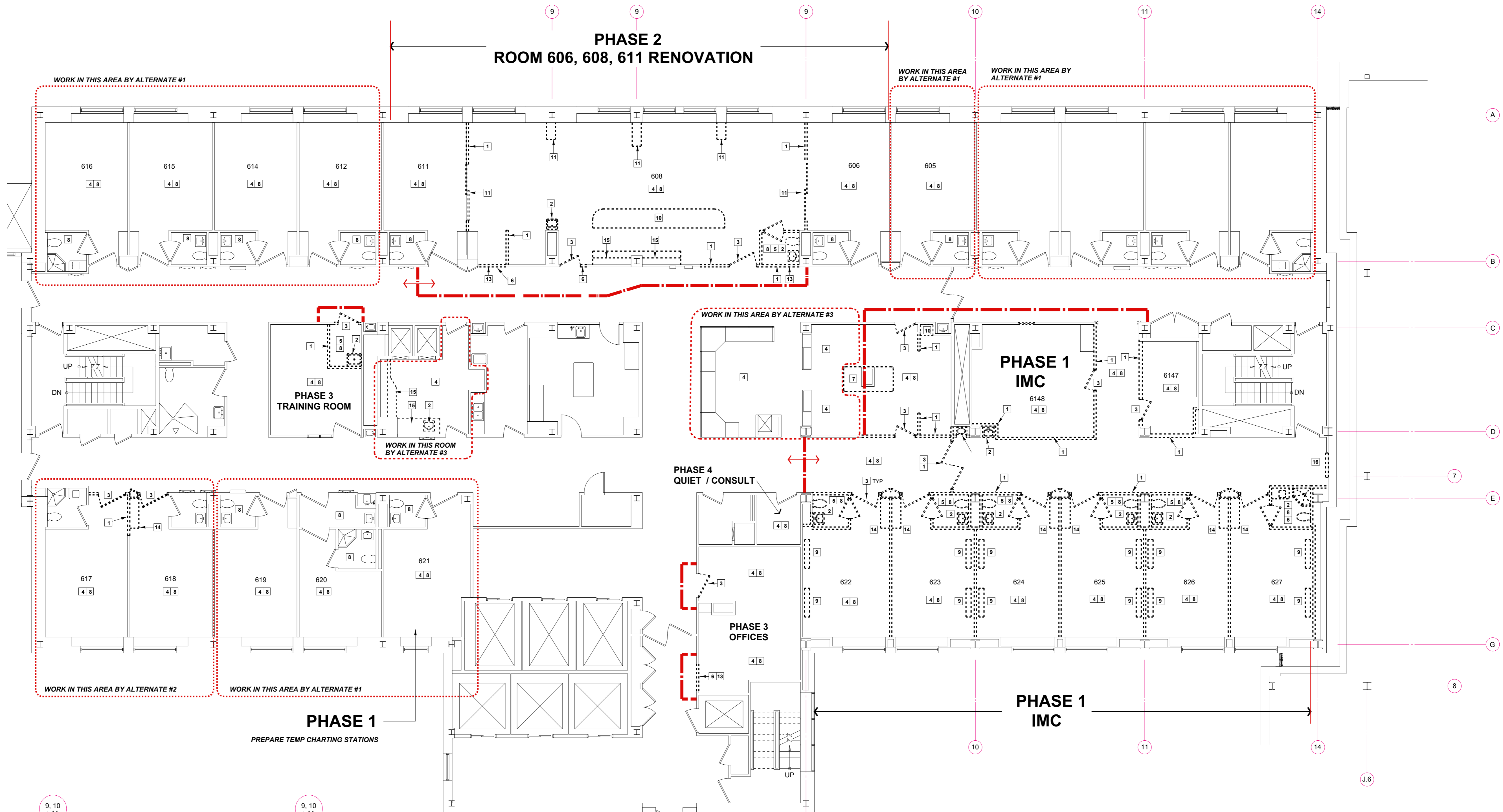
PERMIT SET
NOT FOR CONSTRUCTION
APRIL 3, 2015

Removals and
Phasing Plan

Scale: 1/8" = 1' - 0"

D 101

**PHASE 2
ROOM 606, 608, 611 RENOVATION**

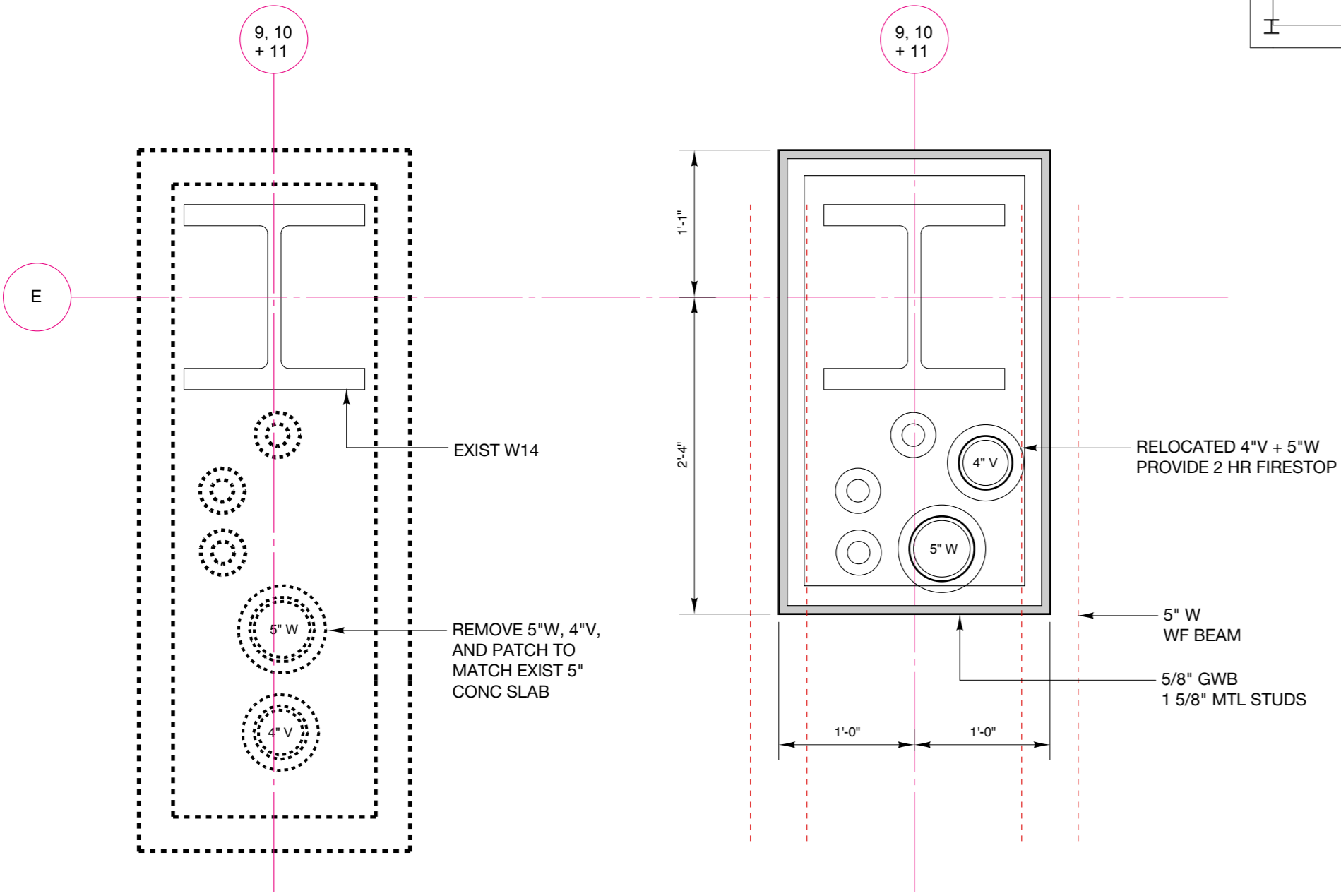


DEMOLITION KEYED NOTES

- | # | DESCRIPTION |
|----|--|
| 1 | REMOVE EXISTING METAL STUD FRAMED PARTITION AND PATCH TO MATCH ADJACENT EXISTING. |
| 2 | REMOVE PLUMBING FIXTURE AND ASSOCIATING PIPING BACK TO MAIN AND CAP. |
| 3 | REMOVE EXISTING DOOR AND FRAME. |
| 4 | REMOVE EXISTING VCT FLOORING AND WALL BASE IN THIS ROOM. REMOVE WALL BASE GLUE AND PATCH TO MATCH EXISTING. REMOVE FLOOR GLUE AND PREPARE EXISTING CONC SLAB FOR INSTALLATION OF NEW FLOORING. |
| 5 | REMOVE EXISTING CERAMIC TILE FLOORING IN THIS ROOM. REMOVE SETTING BED FROM EXISTING CONC SLAB AND PREPARE INSTALLATION OF NEW FLOORING. |
| 6 | PREPARE ROUGH OPENING FOR DOOR IN EXISTING METAL STUD FRAMED PARTITION. |
| 7 | REMOVE AND RECONFIGURE EXISTING ISLAND; REINSTALL AS SHOWN. |
| 8 | REMOVE EXISTING ACOUSTICAL TILE CEILING IN THIS ROOM. |
| 9 | REMOVE EXISTING OVER BED LIGHT AND SAVE FOR REUSE. |
| 10 | REMOVE EXISTING MILLWORK COUNTER. |
| 11 | REMOVE EXISTING SLIDING GLASS DOORS AND FRAME. |
| 12 | REMOVE EXISTING LAMINATE UTILITIES COLUMN. REMOVE AND CAP OXYGEN, VACUUM AND AIR OUTLETS AND PIPING BACK TO MAINS AND CAP. REMOVE ELECTRICAL OUTLETS AND BRANCH CIRCUITS. |
| 13 | REMOVE EXISTING 2 X 8 OAK WALL PROTECTION RAIL. PROVIDE DOWELLED WALL RETURN AND PATCH TO MATCH EXISTING. |
| 14 | REMOVE LAMINATE WARDROBE AND METAL STUD FRAMED SOFFIT. |
| 15 | REMOVE EXISTING LAMINATE BASE CABS, COUNTERTOP AND WALL CABINETS |
| 16 | REMOVE EXISTING CONVECTOR. REMOVE PIPING TO MAINS AND CAP. |

PHASING LEGEND

- CONTAINMENT PARTITION
- CONSTRUCTION ACCESS



Plan Detail Plumbing Stack Relocations
1" = 1'-0" THREE (3) THUS

