

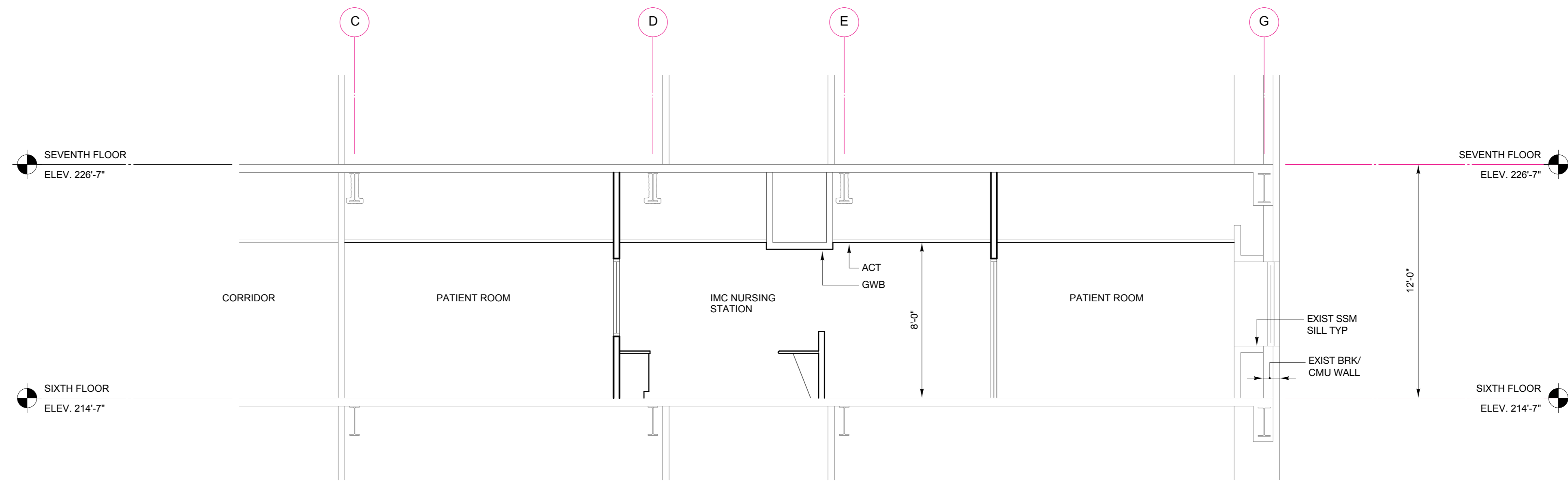


**Winton Scott Architects**  
 5 Milk Street  
 Portland, Maine 04101  
 207 774 4811  
 www.wintonsscott.com

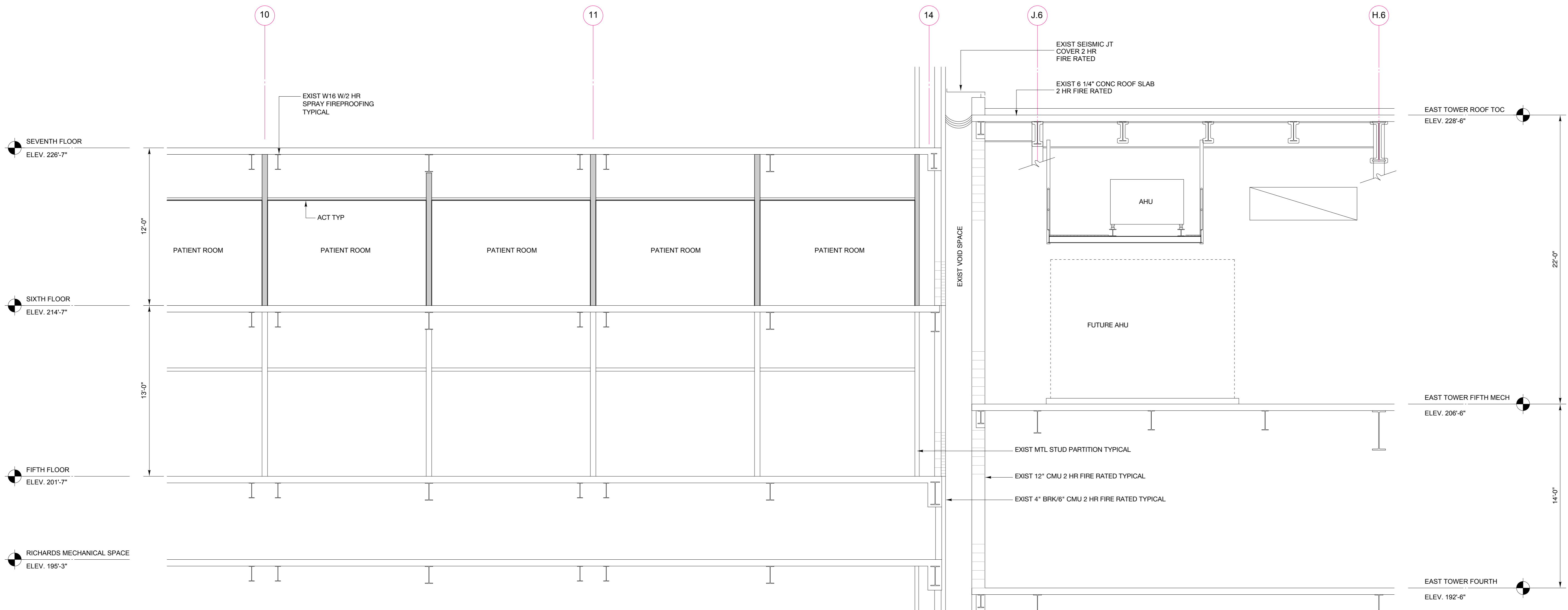
Architecture / Planning  
 Preservation Architecture  
 Interior Architecture

**Allied Engineering**  
 160 Veranda Street  
 Portland, Maine 04103  
 207 221 2260  
 www.allied-eng.com

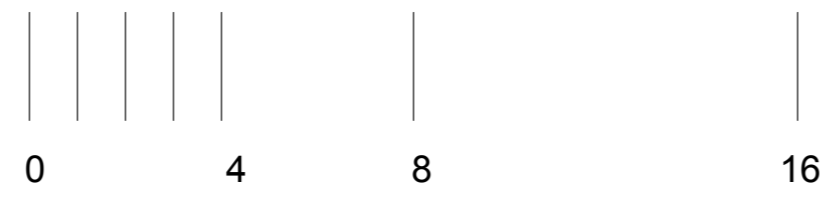
Mechanical and Electrical  
 Engineering



**A BUILDING SECTION A - A**  
 1/4" = 1' 0"



**B BUILDING SECTION B - B**  
 1/4" = 1' 0"



Maine Medical Center  
 Portland, Maine

**R6 Intermediate Care Unit**

Richards Wing  
 Sixth Floor

PERMIT SET  
 NOT FOR CONSTRUCTION  
 APRIL 3, 2015

Building  
 Sections