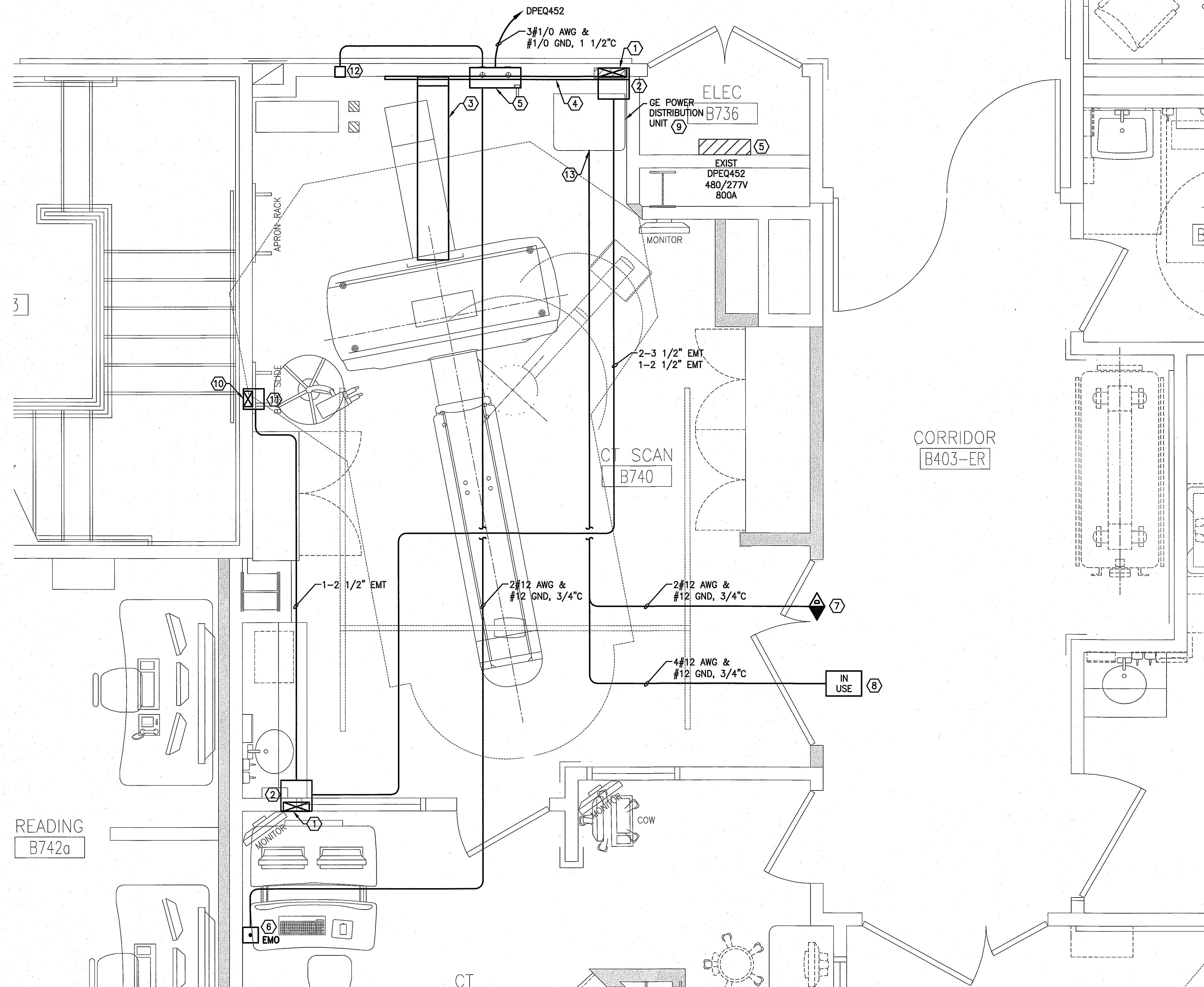


NOTES:

- SEE SHEET E-001 FOR LEGEND AND GENERAL NOTES.
- SEE GE INSTALLATION DRAWINGS FOR ADDITIONAL DETAILS, DIMENSIONED LOCATION OF ALL BOXES, WALL DUCTS, FLOOR DUCTS, INSTALLATION NOTES, CABLE LENGTH RESTRICTIONS AND OTHER INSTALLATION REQUIREMENTS. ALL WORK SHALL BE COORDINATED WITH GE PROJECT MANAGER AND EQUIPMENT INSTALLER.
- ALL EMPTY CONDUITS SHALL BE PROVIDED WITH PULL STRINGS FOR INSTALLATION OF GE SUPPLIED CABLES. CABLES INSTALLED BY CONTRACTOR TO GE EQUIPMENT SHALL BE COORDINATED WITH GE EQUIPMENT INSTALLER FOR TERMINATIONS.

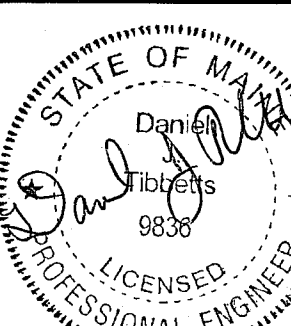
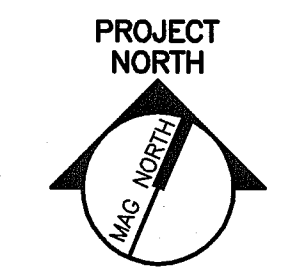
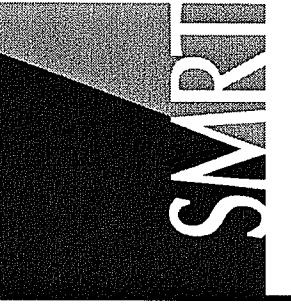
KEYED NOTES:

- FURNISH & INSTALL A 10" WIDE, 3 1/2" DEEP RECESSED VERTICAL WALL DUCT WITH REMOVABLE COVER EXTENDING FROM THE FLOOR LINE TO JUNCTION BOX ABOVE CEILING. PROVIDE WALL DUCT WITH TWO STEEL DIVIDERS. PROVIDE GROMMETTED OPENINGS IN WALL DUCT AS INDICATED ON GE DRAWINGS.
- FURNISH & INSTALL A 12" x 12" x 6" JUNCTION BOX WITH REMOVABLE COVER MOUNTED ABOVE CEILING.
- FURNISH & INSTALL A 12" WIDE x 3" DEEP RECESSED FLOOR DUCT WITH WEATHER TIGHT REMOVABLE COVER FINISHED TO MATCH FLOORING AND TWO METAL DIVIDERS. PROVIDE THREE 3-1/2" DIAMETER CHASE NIPPLES IN COVER AT THE CT SCANNER.
- FURNISH & INSTALL A 10" WIDE, 3 1/2" DEEP SURFACE HORIZONTAL WALL DUCT WITH REMOVABLE COVER MOUNTED 9" AFF TO CENTER OF WALL DUCT. PROVIDE VERTICLE CONNECTION TO FLOOR DUCT DESCRIBED IN KEY NOTE 3 AND TWO STEEL DIVIDERS IN WALL DUCT.
- MOUNT MAIN DISCONNECT PANEL SUPPLIED BY GE AND FEED FROM AN EXISTING SPARE 150 AMP, THREE POLE BREAKER IN PANELBOARD DPEQ452.
- FURNISH & INSTALL A LATCHING TYPE EMERGENCY OFF BUTTON WITH PROTECTIVE COVER MOUNTED IN A SINGLE GANG BOX 60" AFF. PROVIDE EMO WITH TWO SETS OF CONTACTS ONE TO SHUT DOWN THE UPS FOR THE SPECT AND THE SECOND TO DE-ENERGIZE SHUNT TRIP CIRCUIT BREAKER IN PANEL MP1. COORDINATE ALL WIRING FOR EMO BUTTONS WITH SIEMENS.
- FURNISH & INSTALL AN RF DOOR SWITCH RATED FOR 24 VOLTS AND 750 MA THAT IS NORMALLY OPEN WHEN DOOR IS OPEN.
- FURNISH & INSTALL AN LED IN USE LIGHT AND AN IN USE LIGHT 24V CONTROLLER. MOUNT CONTROLLER IN AN ENCLOSURE ABOVE THE CEILING OUTSIDE CT ROOM. CONTROLLER TO BE A GE E45002RL OR EQUAL. WARNING LIGHT TO BE FED FROM SAME CIRCUIT AS ROOM LIGHTS. WIRING BETWEEN WARNING LIGHT AND WARNING LIGHT CONTROLLER TO BE 1/2 AWG & #12 GND, 3/4"C.
- FROM MAIN DISCONNECT PANEL PROVIDE FLEXIBLE CONNECTION TO GE POWER DISTRIBUTION UNIT (PM). WIRING TO BE 3 #1/0 AWG & #1/0 GND, 2"C. IN WALL DUCT BEHIND PM PROVIDE SPLIT COVERPLATE, 12" GROMMET MATERIAL FOR A 3" x 3" OPENING IN DUCT COVER. PROVIDE TWO 2" 90 DEGREE CONNECTORS, 6" OF 2" FLEXIBLE METAL CONDUIT, TWO SUITABLE CONNECTORS, 12" x 16" x 4" BOX AND 12" OF 1/2" FLEXIBLE METAL CONDUIT FOR CONNECTING WIRING TO PM.
- FURNISH & INSTALL A 6" WIDE, 3 1/2" DEEP RECESSED VERTICAL WALL DUCT WITH REMOVABLE COVER EXTENDING FROM THE FLOOR LINE TO JUNCTION BOX ABOVE CEILING. PROVIDE WALL DUCT WITH TWO STEEL DIVIDERS. PROVIDE GROMMETTED OPENINGS IN WALL DUCT AS INDICATED ON GE DRAWINGS.
- FURNISH & INSTALL A 8" x 8" x 6" JUNCTION BOX WITH REMOVABLE COVER MOUNTED ABOVE CEILING.
- FURNISH & INSTAL A 4" x 4" x 4" RECESSED JUNCTION BOX WITH COVERPLATE, 2" DIAMETER CHASE NIPPLE, TWO 2" DIAMETER BUSHINGS AND LOCKNUTS, 1" DIAMETER CHASE NIPPLE AND TWO 1" DIAMETER BUSHINGS AND LOCKNUTS.
- WIRING FOR DOOR SWITCH AND WARNING LIGHT TO CONNECT TO POWER DISTRIBUTION UNIT. RUN CONDUITS TO WALL DUCT AND PROVIDE FLEXIBLE CONNECTIONS TO POWER DISTRIBUTION UNIT.



144 Fore Street/P.O. Box 618
Portland, Maine 04104
Tel. (207) 772-3846
Fax. (207) 772-1070
www.smrtinc.com

ARCHITECTURE
ENGINEERING
PLANNING
INTERIOR DESIGN
COMMISSIONING



1/13/15

MAINE MEDICAL CENTER
ED CT FIT-UP AND READING RENOVATIONS
PORTLAND, MAINE

ISSUED FOR PERMITTING
1-12-15

REV	DESCRIPTION	DATE

GRAPHIC SCALE:
0" 1"

SCALE: 1/2"=1'-0"
PROJECT MANAGER: DJM
JC/DRAWN BY: CDS
A/E OF RECORD: DJT
CAD FILE: EP401-14150
PROJECT NO: 14150
DATE: 1/13/15
SHEET TITLE:

ENLARGED PLAN

SHEET No.
EP401

A1 FLOOR PLAN

1/4"=1'-0"

© COPYRIGHT 2013 SMRT INC.