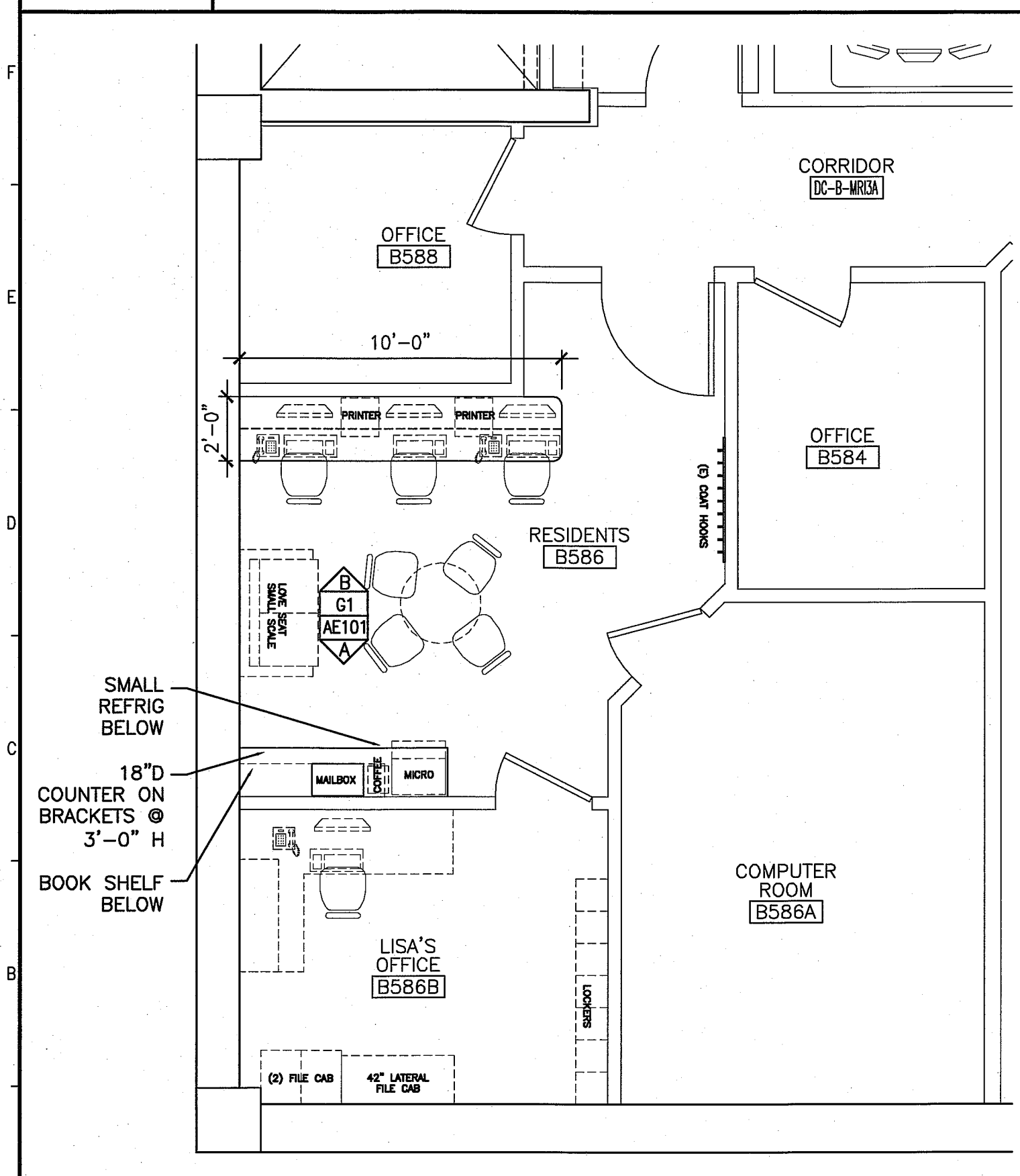


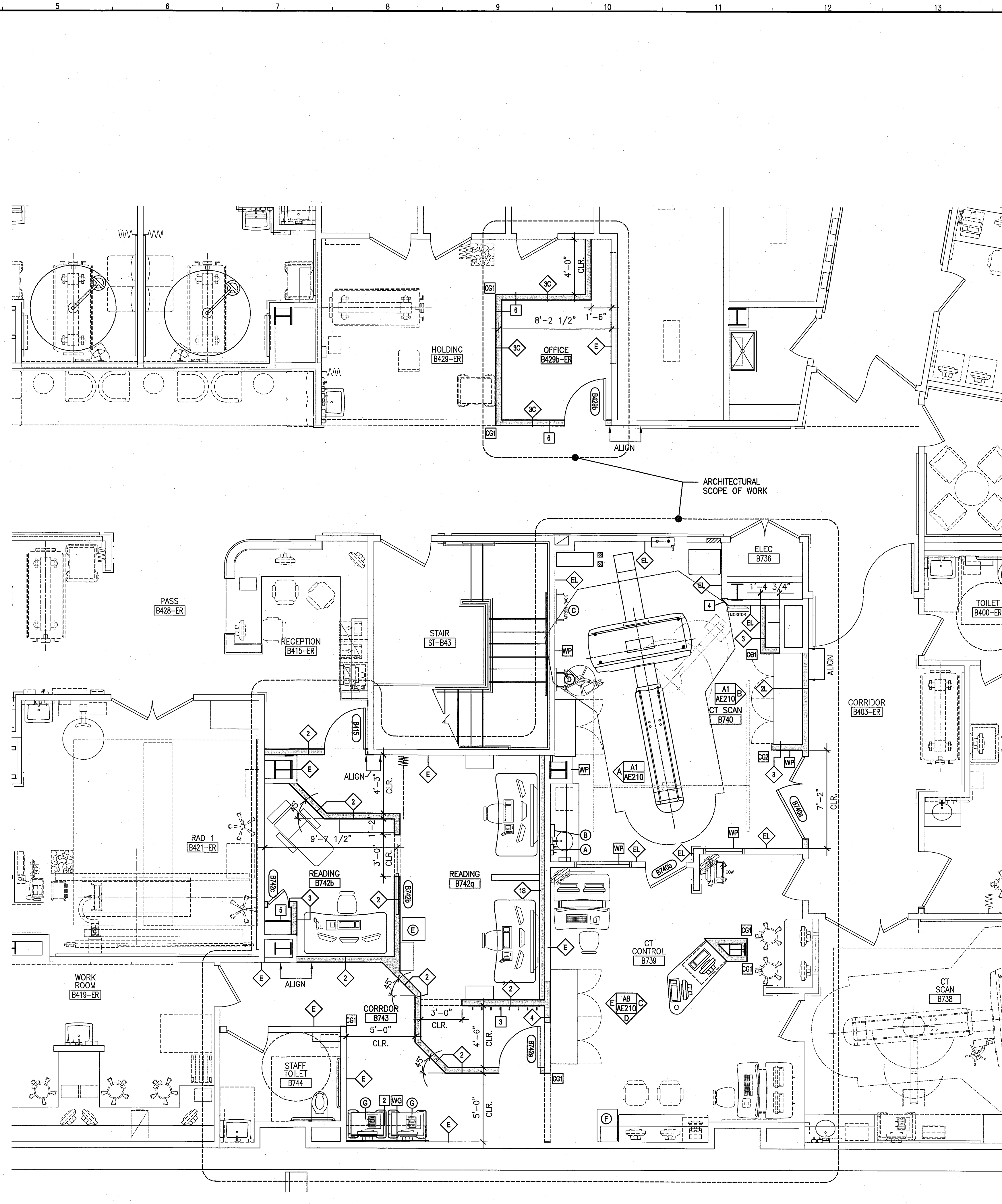
G1 FLOOR PLAN - BASEMENT NDF

1/4"=1'-0"



A1 FLOOR PLAN - BASEMENT NDF

1/4"=1'-0"



A4 FLOOR PLAN - BASEMENT EAST TOWER

1/4"=1'-0"

FLOOR PLAN NOTES:

- SEE GENERAL NOTES ON G1002.
- FURNITURE DASHED IN BY OTHERS IS INDICATED FOR COORDINATION. PROVIDE IN WALL BLOCKING FOR ALL WALL MOUNTED CASEWORK, FURNITURE, EQUIPMENT AND ANY OTHER NIC ITEM.
- PARTITION TYPE \diamond IS TYPICAL UNLESS NOTED OTHERWISE.
- REFER TO DETAILS AND/OR ENLARGED PLANS FOR ADDITIONAL INFORMATION.
- AT ALL REMOVED ITEMS, PATCH WALL SURFACE TO MATCH ADJACENT MATERIAL, TYPICAL.
- EXTERIOR DIMENSIONS ARE FROM FACE OF STUD TO FACE OF STUD. UNLESS NOTED OTHERWISE.
- CORNER GUARDS UP TO 48" A.F.F. FROM TOP OF BASE, TYPICAL.
- ALL DASHED KEYED NOTES REFER TO ITEMS ON GE SITE PLANNING GUIDE DRAWINGS.

KEYED NOTES:

- OWNER PROVIDED FURNITURE, CONTRACTOR TO PROVIDE BLOCKING AND COORDINATE POWER AND DATA OUTLETS.
- PROVIDE (2) 16"D x 5'10"L PLAM SHELVES MOUNTED ON WALL STANDARDS AND BRACKETS ABOVE CRASH CARTS.
- PROVIDE (8) COAT HOOKS MOUNTED ON PLAM BACKER MOUNTED TO WALL.
- REMOVE PORTION OF EXISTING CORNER, PROVIDE 6" CHAMFER IN FINISH GWB FACE.
- PROVIDE CLOSET ROD AND PLAM SHELF ABOVE
- PROVIDE GWB PARTITIONS AS NOTED AS BASE BID, ALTERNATE DEMOUNTABLE WALLS TO BE CONSIDERED.

WALL LEGEND

- \diamond PARTITION TYPE, SEE G1002
- INDICATES 1-HOUR RATED PARTITION/ WALL
- INDICATES 2-HOUR RATED PARTITION/ WALL
- CG1 CORNER GUARD-1: 90 DEGREE-UP TO 48" FROM TOP OF BASE
- CG2 CORNER GUARD-2: END WALL PROTECTOR-UP TO 48" FROM TOP OF BASE
- WP WALL PROTECTION-UP TO 48" AFF
- WG EXISTING SALVAGED WALL GUARD RELOCATED, MOUNTED AT 34" AFF

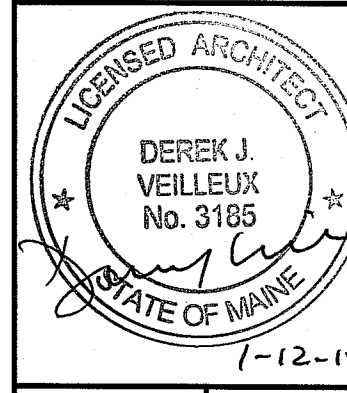
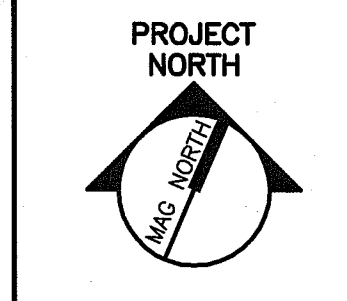
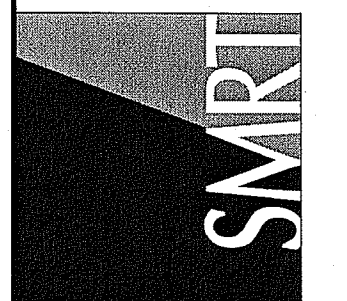
ACCESSORY SCHEDULE

TAG	DESCRIPTION	
A	SOAP DISPENSER	O/C
B	PAPER TOWEL DISPENSER	O/C
C	LEAD APRON RACK	O/C
D	BACK BOARD	O/C
E	REFRIGERATOR	O/O
F	BLANKET WARMER	O/O
G	CRASH CART	O/O

C/C - CONTRACTOR FURNISHED/CONTRACTOR INSTALLED
 O/C - OWNER FURNISHED/CONTRACTOR INSTALLED
 O/O - OWNER FURNISHED/OWNER INSTALLED
 CONTRACTOR SHALL PROVIDE BLOCKING IN WALL AT ALL ACCESSORIES, SEE K18/AE501

144 Fore Street/P.O. Box 615
 Portland, Maine 04104
 tel. (207) 772-3846
 fax. (207) 772-1070
 www.smartinc.com

ARCHITECTURE
 ENGINEERING
 PLANNING
 INTERIOR DESIGN
 COMMISSIONING



**MAINE MEDICAL CENTER
 ED CT FIT-UP AND READING RENOVATIONS**
 PORTLAND, MAINE

ISSUED FOR PERMITTING 1-12-15

REV	DESCRIPTION	DATE

SHEET No. **AE101**
 © COPYRIGHT 2013 SMART INC.