

GENERAL NOTES:

- SEE G102 FOR GENERAL NOTES.

APPLICABLE CODES:

GENERAL:

- INTERNATIONAL BUILDING CODE (IBC) 2009 EDITION
- NFPA LIFE SAFETY CODE 101, 2000 and 2009 EDITION
- 2009 ADA STANDARDS FOR ACCESSIBLE DESIGN
- NFPA 1 Uniform Fire Code, 2006 and 2009
- GUIDELINES FOR DESIGN AND CONSTRUCTION OF HEALTH CARE FACILITIES, THE FACILITY GUIDELINES INSTITUTE, 2010 EDITION.

MECHANICAL:

- ASHRAE STANDARD 62.1-2007 - VENTILATION FOR ACCEPTABLE INDOOR AIR QUALITY
- ASHRAE STANDARD 90.1-2007 - ENERGY STANDARD FOR BUILDINGS EXCEPT LOW-RISE RESIDENTIAL BUILDINGS, EDITIONS WITHOUT ADDENDA.
- ME ELEVATOR CODE - ASME A17.1, 2007 EDITION.
- NFPA 90A - STANDARD FOR THE INSTALLATION OF AIR CONDITIONING AND VENTILATION SYSTEMS, 2009 EDITION.
- 2009 INTERNATIONAL ENERGY CONSERVATION CODE.
- NFPA 99 - STANDARD FOR HEALTH CARE FACILITIES - 1999 and 2005 EDITION.
- BOILER CODE- ASME BPC, SECTION 1-11(1998, 1999)
- MUBEC (MAINE UNIFORM BUILDING & ENERGY CODE)

PLUMBING:

- MAINE STATE INTERNAL PLUMBING CODE, LATEST EDITION (BASED ON 2009 IAPMO)
- NFPA 54 - NATIONAL FUEL GAS CODE, 1999 and 2009 EDITION
- NFPA 13 - INSTALLATION OF SPRINKLER SYSTEMS - 1999 and 2007 EDITION.

ELECTRICAL:

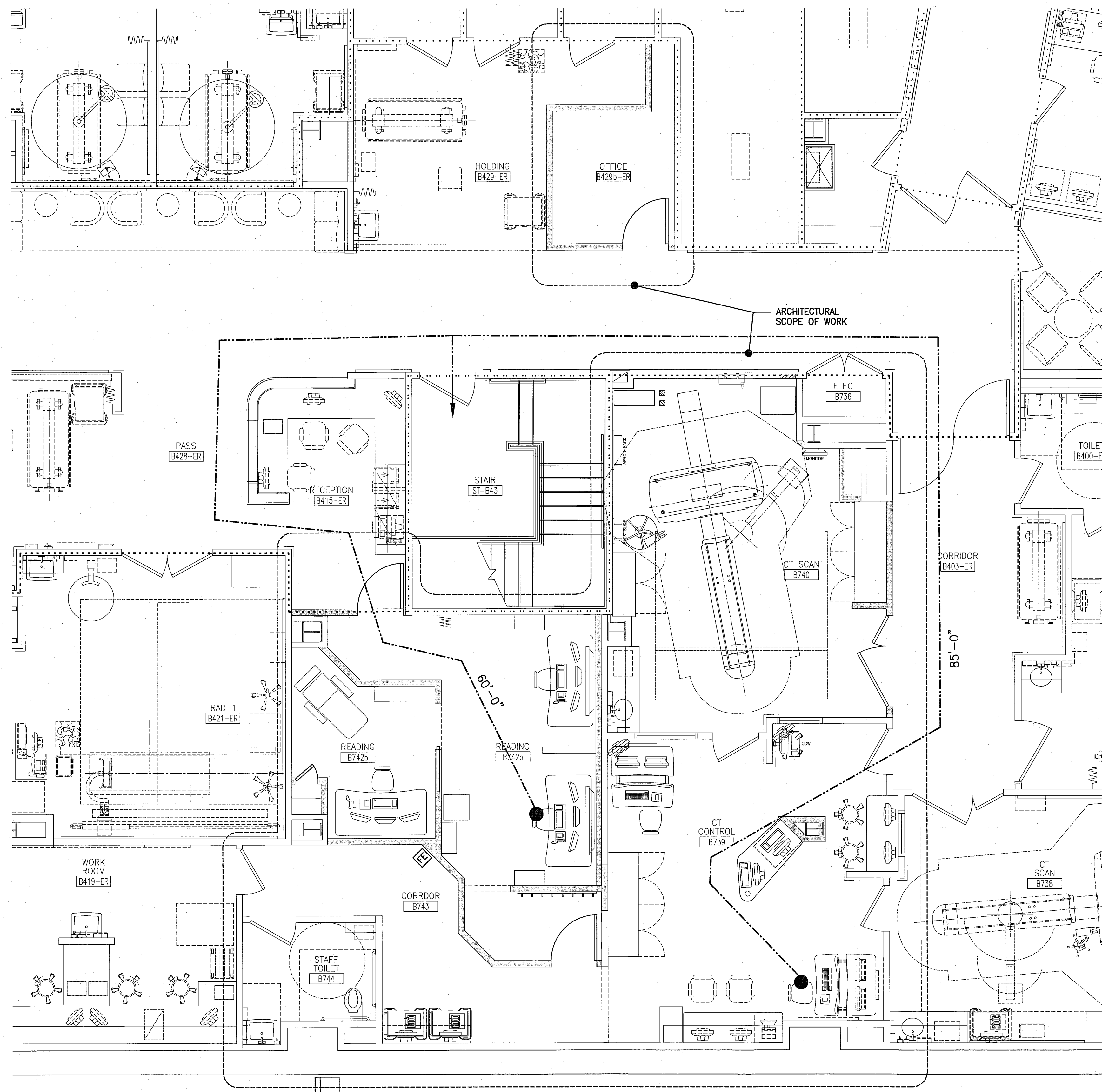
- NFPA 70 NATIONAL ELECTRICAL CODE 2008 EDITION.
- NFPA 72 NATIONAL FIRE ALARM CODE 2007 EDITION
- NFPA 110 STANDARD FOR EMERGENCY AND STANDBY POWER SYSTEMS, 2005 EDITION.

CODE COMPLIANCE STRATEGY NOTES:

- BUILDING CONSTRUCTION TYPE: II (2,2,2)
- LIFE SAFETY CODE OCCUPANCY: AMBULATORY HEALTHCARE
- MAX PATH OF TRAVEL = 150 FEET
- DEAD END LIMIT @ NEW CORRIDOR = 30'-0" (NFPA 101: 19.2.5.2)
- COMMON PATH OF TRAVEL LIMIT= NO REQUIREMENT(NFPA 101: TABLE A.7.6)
- A U.L. LISTED THROUGH-PENETRATION FIRESTOP SYSTEM SHALL BE PROVIDED AT ALL PENETRATIONS REQUIRED BY ANY TRADE, THROUGH A FIRE OR SMOKE RATED ASSEMBLY. THE U.L. LISTED THROUGH-PENETRATION FIRESTOP SYSTEM PROVIDED SHALL MEET THE RATING REQUIREMENTS OF THE FIRE OR SMOKE RATED ASSEMBLY PENETRATED.
- WHERE MULTIPLE CODE EDITIONS ARE NOTED, CONTRACTOR TO PROVIDE WORK IN ACCORDANCE TO THE MORE STRINGENT.

LEGEND

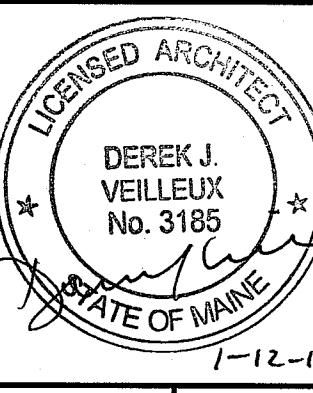
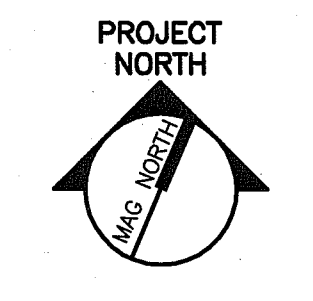
- 2 HOUR RATED WALL [Symbol]
- 1 HOUR RATED WALL [Symbol]
- SMOKE PARTITION [Symbol]
- SMOKE BARRIER [Symbol]
- FIRE EXTINGUISHER [FE] [Symbol]



144 Fore Street, P.O. Box 616
Portland, Maine 04104
tel. (207) 772-3846
fax. (207) 772-1070
www.smartinc.com

ARCHITECTURE
ENGINEERING
PLANNING
INTERIOR DESIGN
COMMISSIONING

SMART



MAINE MEDICAL CENTER
ED CT FIT-UP AND READING RENOVATIONS
PORTLAND, MAINE

ISSUED FOR PERMITTING
1-12-15

CURRENT ISSUE STATUS:

REV	DESCRIPTION	DATE

GRAPHIC SCALE:
0" 1"

SCALE: 1/4"=1'-0"
PROJECT MANAGER: DJV
JC/DRAWN BY: MDR
A/E OF RECORD: DJV
CAD FILE: A-101-14150
PROJECT NO: 14150
DATE:

SHEET TITLE:
PARTIAL FACILITY
AND CODE
COMPLIANCE PLAN

SHEET No.
A-101
© COPYRIGHT 2015 SMART INC.

A1 CODE COMPLIANCE PLAN

1/4"=1'-0"