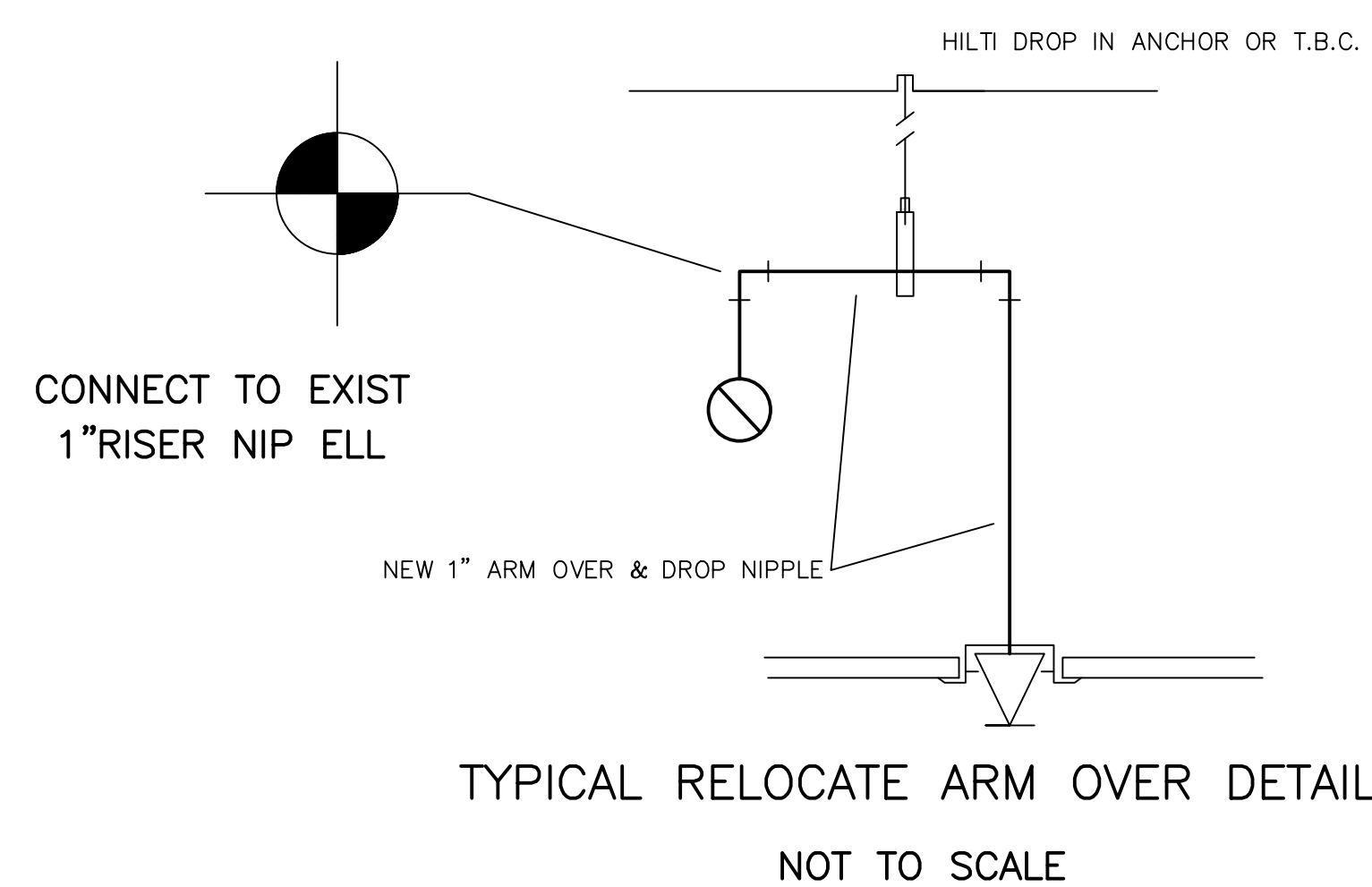
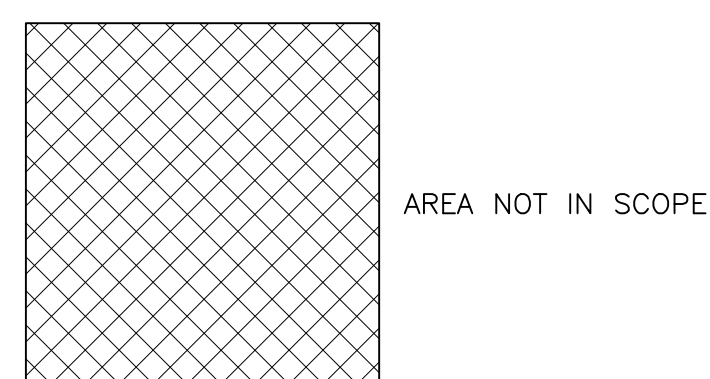


BASEMENT LEVEL
SCALE: 1/8" = 1'-0"



LEGEND



- 155' STANDARD RESPONSE CHROME FLUSHMOUNT PENDENT SPRINKLER
- 155' QUICK RESPONSE BRASS UPRIGHT SPRINKLER
- 155' QUICK RESPONSE WHITE RECESSED PENDENT SPRINKLER
- EXISTING SPRINKLER TO REMAIN
- ⊗ EXISTING SPRINKLER DROP TO BE RELOCATED
- FF k=XX FIN FLR TO CENTERLINE OF PIPE
- BJ k=XX BOTTOM OF JOISTS TO CENTERLINE OF PIPE
- BOT k=XX BOTTOM OF TRUSS TO CENTERLINE OF PIPE
- BOS k=XX BOTTOM OF STEEL TO CENTERLINE OF PIPE
- C k=XX FINISHED CEILING TO CENTERLINE OF PIPE
- RISE OR DROP NIPPLE
- RISE OR DROP BETWEEN FLOORS
- ⊗ HYDRAULIC REFERENCE POINT
- TIE IN POINT

- 10 RELIABLE F1FR
155' SR CHROME FLUSH PLATE PENDENT
1/2"x1/2" K=5.6
- 20 RELIABLE F1FR
155' Q R WHITE RECESSED PENDENT
1/2"x1/2" K=5.6

SYSTEM CLASSIFICATION

THE EXISTING WET PIPE SPRINKLER SYSTEM TO BE MODIFIED IN ALL AREAS OF THE SUBJECT SPACE TO MEET NFPA, STATE OF MAINE, AND CITY OF PORTLAND CODES. THE ADJACENT AREAS ARE FULLY SPRINKLERED 100% THROUGHOUT AND THE BUILDING IS DESIGNED TO MEET NFPA #13 FOR LIGHT HAZARD EXCEPT FOR MECH AND ELECTRICAL ROOMS MEET NFPA #13 O H.

GENERAL NOTES

ALL DIMENSIONS ARE CENTER TO CENTER U/N
ALL 1H" AND SMALLER PIPE TO SCH 40 BLACK STEEL
ALL 1H" AND SMALLER FITTINGS SHALL BE SCREWED STD. WT. C.I. BLACK U/N
2" PIPE MAY BE SCH 40 OR SCH 10 LIGHTWALL BLACK ON WET SYSTEM
ALL 2H" AND LARGER PIPE IS SCH. 10 BLACK WITH DUCTILE GROOVED FITTINGS ON WET SYSTEM.
ALL DRY SYSTEM PIPING IS SCHEDULE 40 BLACK SCREWED OR GROOVED
ALL HANGER SPACING AND SIZES TO CONFORM TO NFPA #13.
SPRINKLERS ARE CENTERED IN CEILING TILES.
SUFFICIENT HEAT TO PREVENT FREEZING OF THE WET PIPE SPRINKLER SYSTEM IS REQUIRED TO BE FURNISHED BY THE BUYER/OWNER.

DEAN & ALLYN, INC.
FIRE PROTECTION • SPECIAL HAZARD
PO BOX 709, GRAY, MAINE 04039
(207)657-5646 FAX:(207)657-5647

**FIRE PROTECTION
SUB BASEMENT LEVEL OF BEAN BLDG**

APPROVED BY	DATE	SURVEYED BY	DATE	DANA A. STEWART NICET IV - #064544	DRAWING TITLE:	REV. 0
		DRAWN BY	DATE	DAN 10/01/14	MAINE MEDICAL CENTER CENTRAL STERILE DEPT. 22 BRAMHALL ST. PORTLAND, ME 04102	NO. OF SPRINKLERS SHOWN ON THIS SHEET 30
		CHECKED BY	DATE	AT DEAN & ALLYN, INC		NO. OF SPRINKLERS IN JOB 30
			DATE	SCALE: 1/8"=1'-0" U/N	CONTRACT WITH: SUFFOLK CONSTRUCTION	CONTRACT NO. C141213
			DATE	SHEET NO. 1 OF 1		