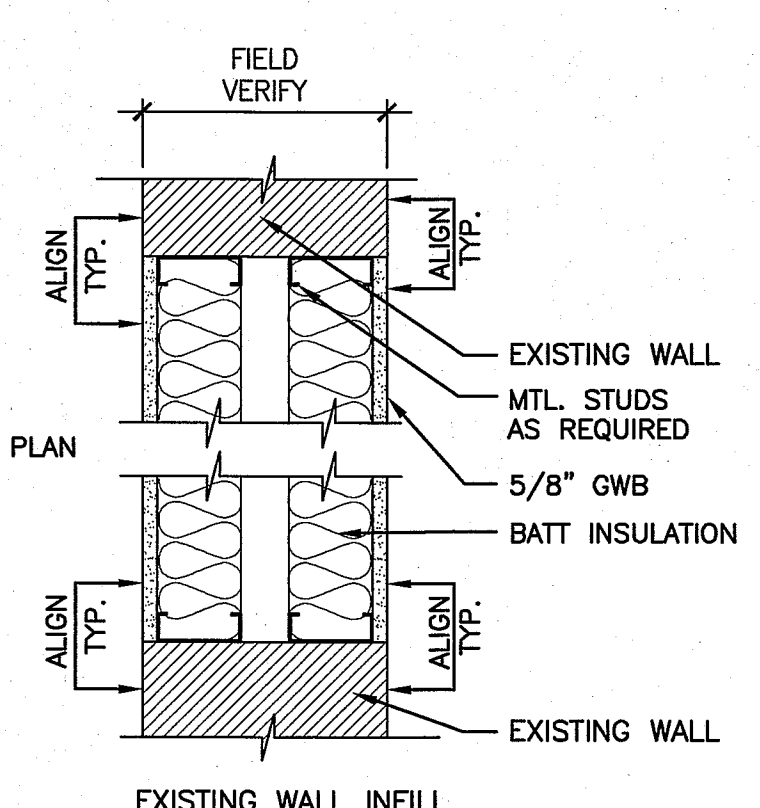


- 1 CONSTRUCT AS SHOWN
- 1A GWB TO 6" ABOVE CEILING
- 1B 6" STUD
- 1C 2-1/2" MTL. STUDS GWB TO 6" ABOVE CEILING
- 1L 1/16" LEAD LINED GWB TO 7'-0" AFF, ON TAGGED SIDE ONLY
- 2 CONSTRUCT AS SHOWN *TYPICAL PARTITION U.N.O.
- 2A CONSTRUCT AS SHOWN 1 HOUR FIRE-RESISTANCE RATING U.L. DESIGN NO. U465
- 2B AS SMOKE PARTITION
- 2C 6" MTL. STUDS
- 2D 5/8" DENSGLOSS OR EQUAL, GRACE ICE AND WATER SHIELD OR EQUAL ON TAGGED SIDE ONLY.
- 2L 1/16" LEAD LINED GWB TO 7'-0" AFF, ON TAGGED SIDE ONLY
- 3 CONSTRUCT AS SHOWN
- 3A 6" STUD W/OUT BATT INSULATION
- 3B AS SMOKE PARTITION



- 4 CONSTRUCT AS DESCRIBED ABOVE
- 4B AS SMOKE PARTITION

- E EXISTING STUD WALL, PATCH AND REPAIR HOLES, CRACKS AND/OR ANY OTHER BLEMISH. PREPARE SUBSTRATE FOR SCHEDULED FINISH PER MANUFACTURER'S WRITTEN RECOMMENDATIONS.
- E1 EXISTING STUD WALL, PROVIDE ACOUSTICAL BATT INSULATION AND 5/8" GWB TO DECK. ON TAGGED SIDE ONLY.
- EL EXISTING STUD WALL, PROVIDE ACOUSTICAL BATT INSULATION AND 1/16" LEAD LINED GWB TO 7'-0" AFF, GWB TOTAL THICKNESS TO MATCH EXISTING ADJACENT

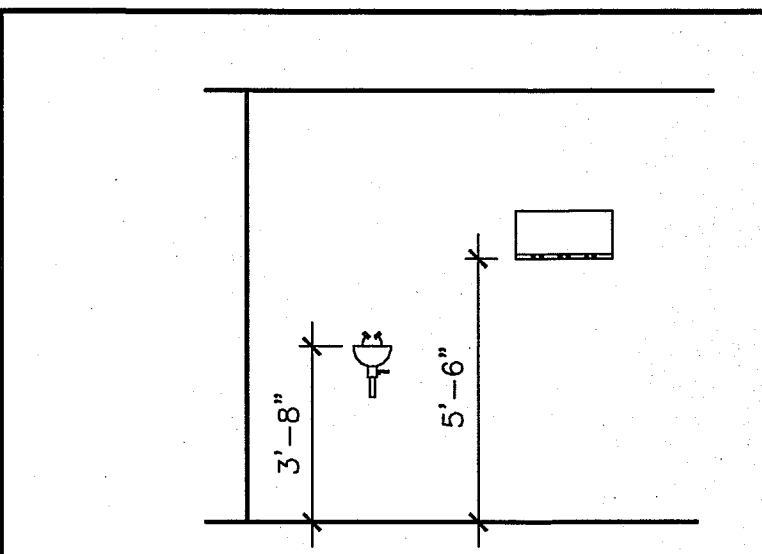
GENERAL NOTES:

1. DO NOT SCALE THE DRAWINGS.
2. FIELD VERIFY ALL DIMENSIONS AND LAYOUT PRIOR TO PROCEEDING WITH WORK. NOTIFY ARCHITECT IN WRITING OF ANY DISCREPANCIES OR INCONSISTENCIES. FAILURE TO REPORT ANY DISCREPANCIES WITHIN THESE CONSTRUCTION DOCUMENTS TO THE ARCHITECT WILL NOT BE GROUNDS FOR ADDITIONAL COST OR CHANGE ORDERS.
3. "PROVIDE" MEANS "FURNISH AND INSTALL".
4. THE CONTRACTOR SHALL BE RESPONSIBLE FOR PROVIDING ALL MATERIALS, AND WORKMANSHIP IN ACCORDANCE WITH FEDERAL, STATE, CITY AND LOCAL BUILDING CODES AND THEIR REQUIREMENTS.
5. THE CONTRACTOR AND ALL TRADES SHALL NOTE REQUIREMENTS OF "GENERAL NOTES" ON ALL SHEETS.
6. REFER TO LARGE SCALE PLANS FOR PARTITION TYPES AND DIMENSIONS IN AREAS WHICH ARE DETAILED AT A LARGER SCALE.
7. SEE A-100 CODE COMPLIANCE STRATEGY NOTES FOR THROUGH-PENETRATION REQUIREMENTS.
8. DIMENSIONS ARE FACE OF CONCRETE, FACE OF MASONRY, AND CENTERLINE OF INTERIOR STUD PARTITIONS, EXTERIOR STUD PARTITIONS ARE DIMENSIONED TO EXTERIOR FACE OF STUD, UNLESS INDICATED OTHERWISE.
9. REFER TO SHEET G1002 FOR TYPICAL MOUNTING HEIGHTS OF PLUMBING FIXTURES & MISCELLANEOUS ITEMS.
10. REFER TO ALL CONSTRUCTION DOCUMENTS FOR REQUIREMENTS WHICH MAY AFFECT THE WORK AND COORDINATE SAME.
11. REFERENCE DETAILS AND ENLARGED PLANS FOR ADDITIONAL DIMENSIONAL INFORMATION.
12. DOOR JAMBS SHALL BE LOCATED 6" FROM CORNER IN STUD PARTITIONS AND 8" FROM CORNER IN MASONRY PARTITIONS, UNLESS INDICATED OTHERWISE.
14. THE CONTRACTOR SHALL BE RESPONSIBLE FOR THE CUTTING & PATCHING OF FLOORS, WALLS, & CEILINGS DUE TO THE REMOVAL OR ADDITION OF MECHANICAL, PLUMBING, ELECTRICAL, & FIRE PROTECTION WORK. SEE GENERAL NOTE NUMBER (15.) FOR FINISH REQUIREMENTS.
15. COORDINATE THE EXTENT OF ALL REMOVALS W/ NEW FINISHES & FINISHES TO REMAIN. PATCH & REPAIR ALL DAMAGE TO EXISTING FINISHES TO MATCH THE ADJACENT FINISH. EXTEND THE PATCH & REPAIR CONTINUOUSLY TO THE NEAREST CORNER UNLESS NOTED OTHERWISE. PREPARE FINISH SUBSTRATES FOR APPLICATION OF FINISHES IN ACCORDANCE W/ THE FINISH MANUFACTURER'S WRITTEN RECOMMENDATIONS.
16. UNLESS NOTED OTHERWISE, ELECTRICAL CONDUIT, PLUMBING PIPING, AND MECHANICAL PIPING SHALL BE CONCEALED.

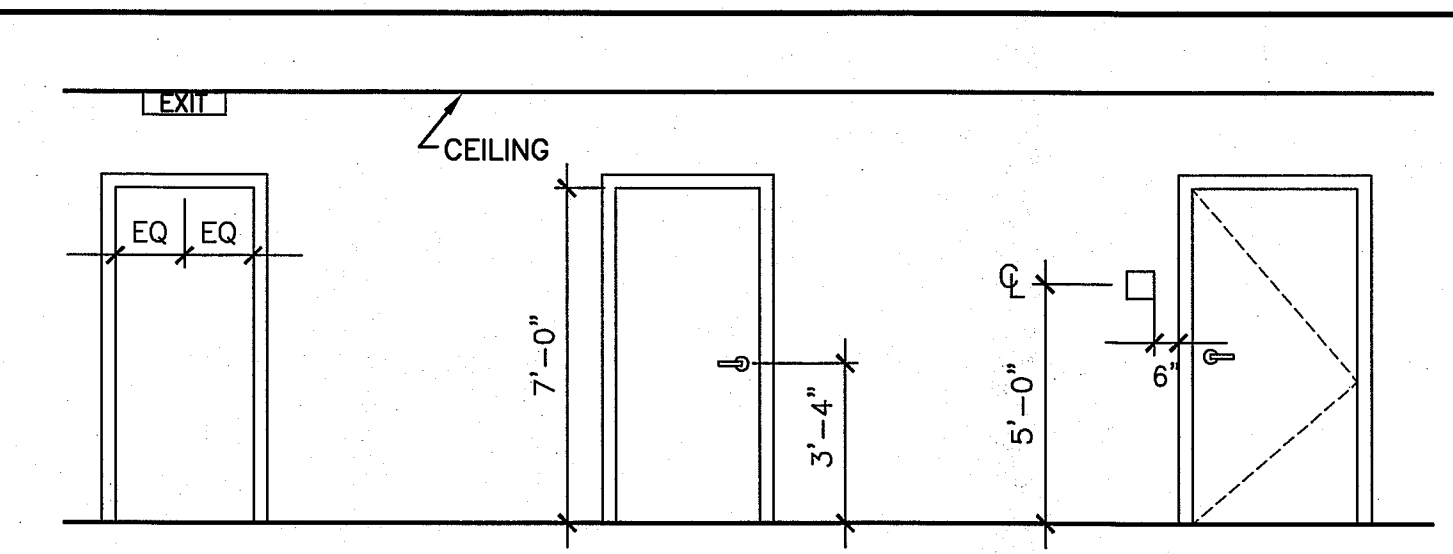
PARTITION NOTES:

1. PARTITION TYPE DRAWINGS ARE DIAGRAMS ONLY, AND ARE NOT TO SCALE.
2. ALL BATT INSULATION IS TO BE CONTINUOUS FULL THICKNESS AND FULL HEIGHT UNLESS NOTED OTHERWISE.
3. ALL PARTITIONS IN TOILET/SHOWER ROOMS, H.A.C. ROOMS AND THE CENTRAL BATHING ROOM TO BE MOISTURE RESISTANCE GWB, ON ROOM SIDE ONLY.
4. SEE TYPICAL TOP OF WALL DETAILS.
5. ALL PARTITIONS AT EXAMS/SW/DIET. REQUIRE JUNCTION BOX COORDINATION. PROVIDE ONLY ONE BOX OR GWB PENETRATION ON ONE SIDE PER STUD BAY FOR WALL STC RATING INTEGRITY.

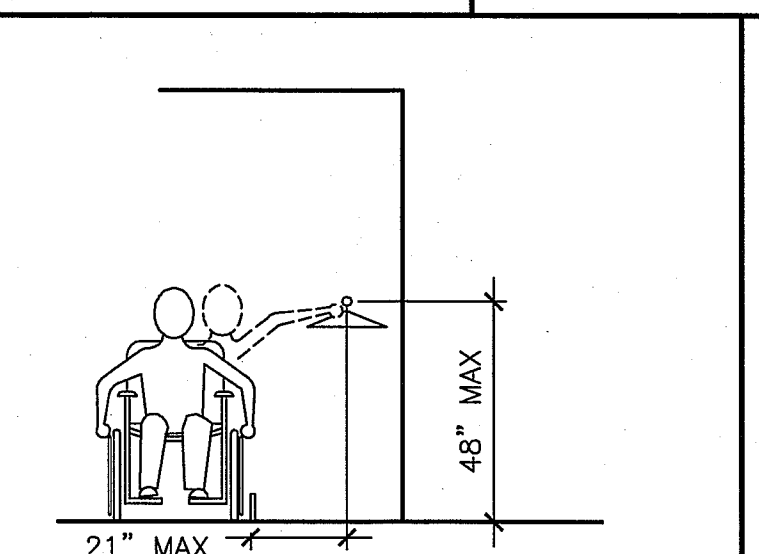
F1 INTERIOR PARTITION TYPES



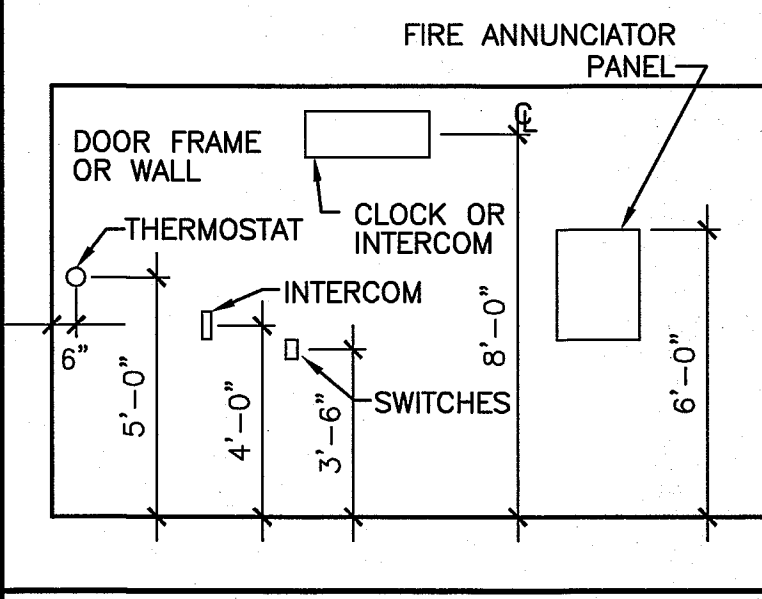
EYEWASH & MOP RACK



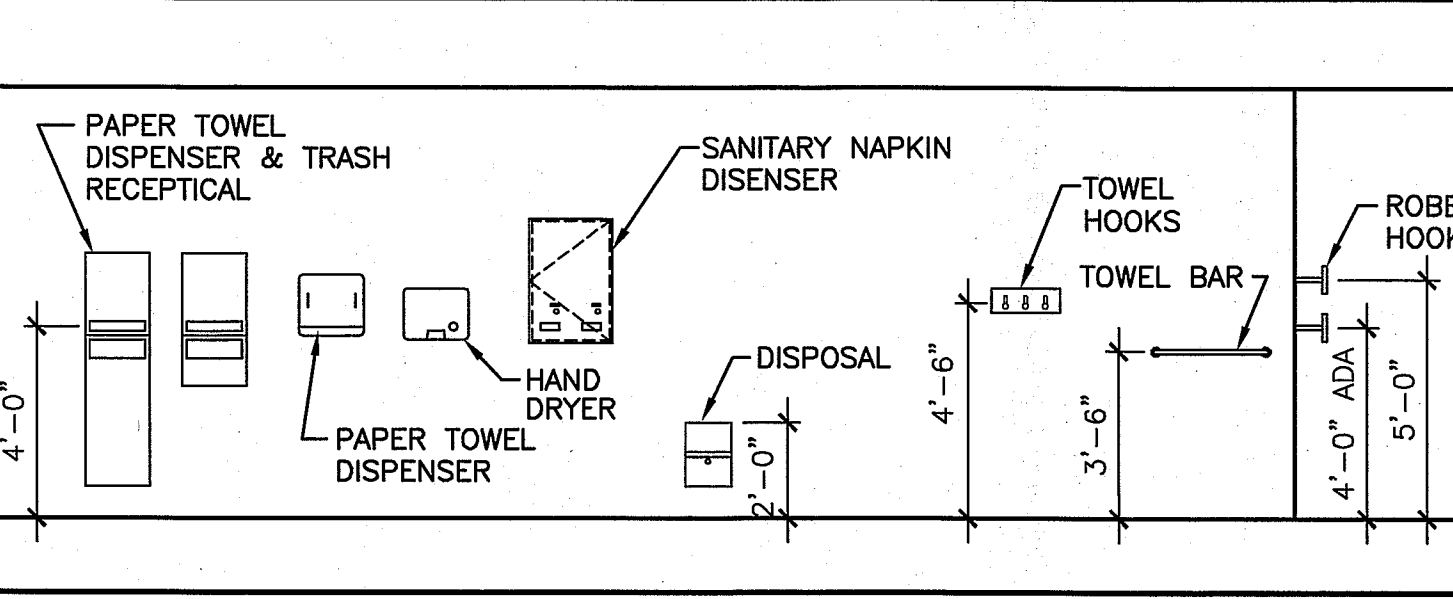
DOOR FIXTURE & SIGNAGE



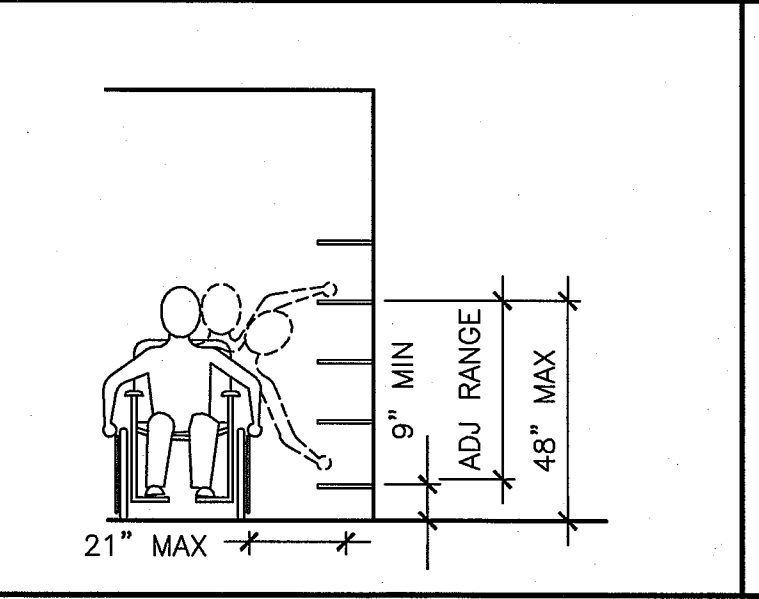
CLOSET ROD



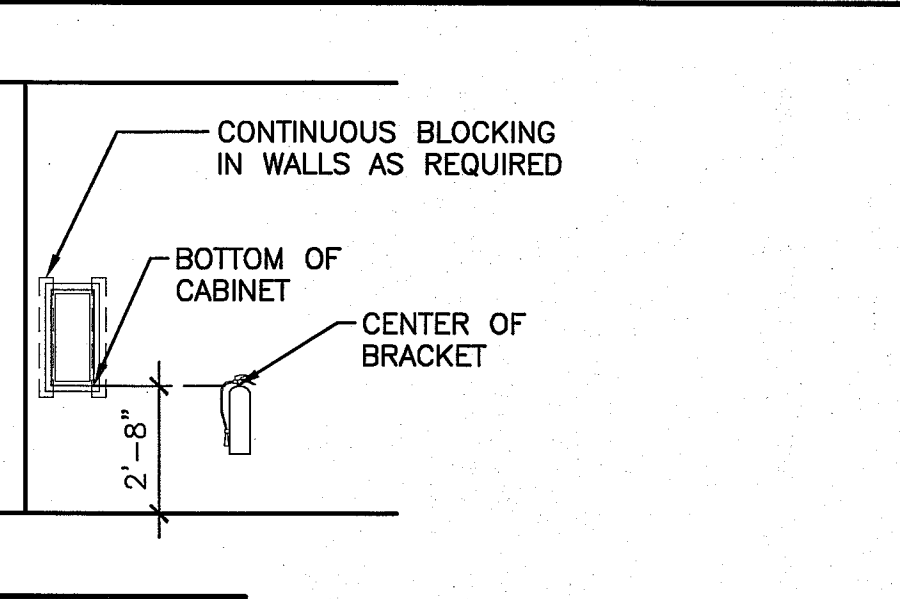
ELECTRICAL DEVICES



ACCESSORIES



SHELVES

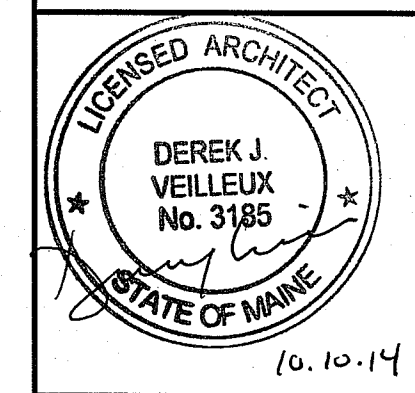
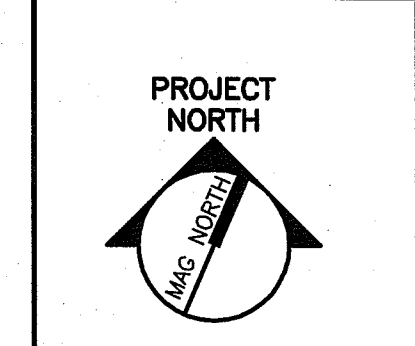
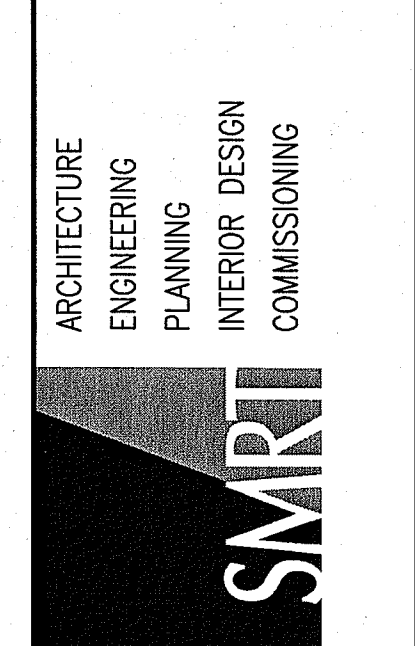


FIRE EXTINGUISHERS

A1 TYPICAL MOUNTING HEIGHTS

1-1/2"=1'-0"

144 Fore Street P.O. Box 618
Portland, Maine 04104
tel. (207) 772-3946
fax. (207) 772-1070
www.smritc.com



MAINE MEDICAL CENTER
NUCLEAR MEDICINE RENOVATIONS - PHASE 2
PORTLAND, MAINE

ISSUED FOR CONSTRUCTION
10-10-14

CURRENT ISSUE STATUS:

REV	DESCRIPTION	DATE
0	ISSUED FOR CONSTRUCTION	10-10-14

GRAPHIC SCALE:
0" = 1"

SCALE: AS NOTED
PROJECT MANAGER: DJV
JC/DRAWN BY: MDR
A/E OF RECORD: DJV
CAD FILE: G1002-14113
PROJECT NO: 14113
DATE: 10-10-14

SHEET TITLE:
PARTITION TYPES AND TYPICAL MOUNTING HEIGHTS

SHEET No.
G1002
© COPYRIGHT 2013 SMRTI INC.