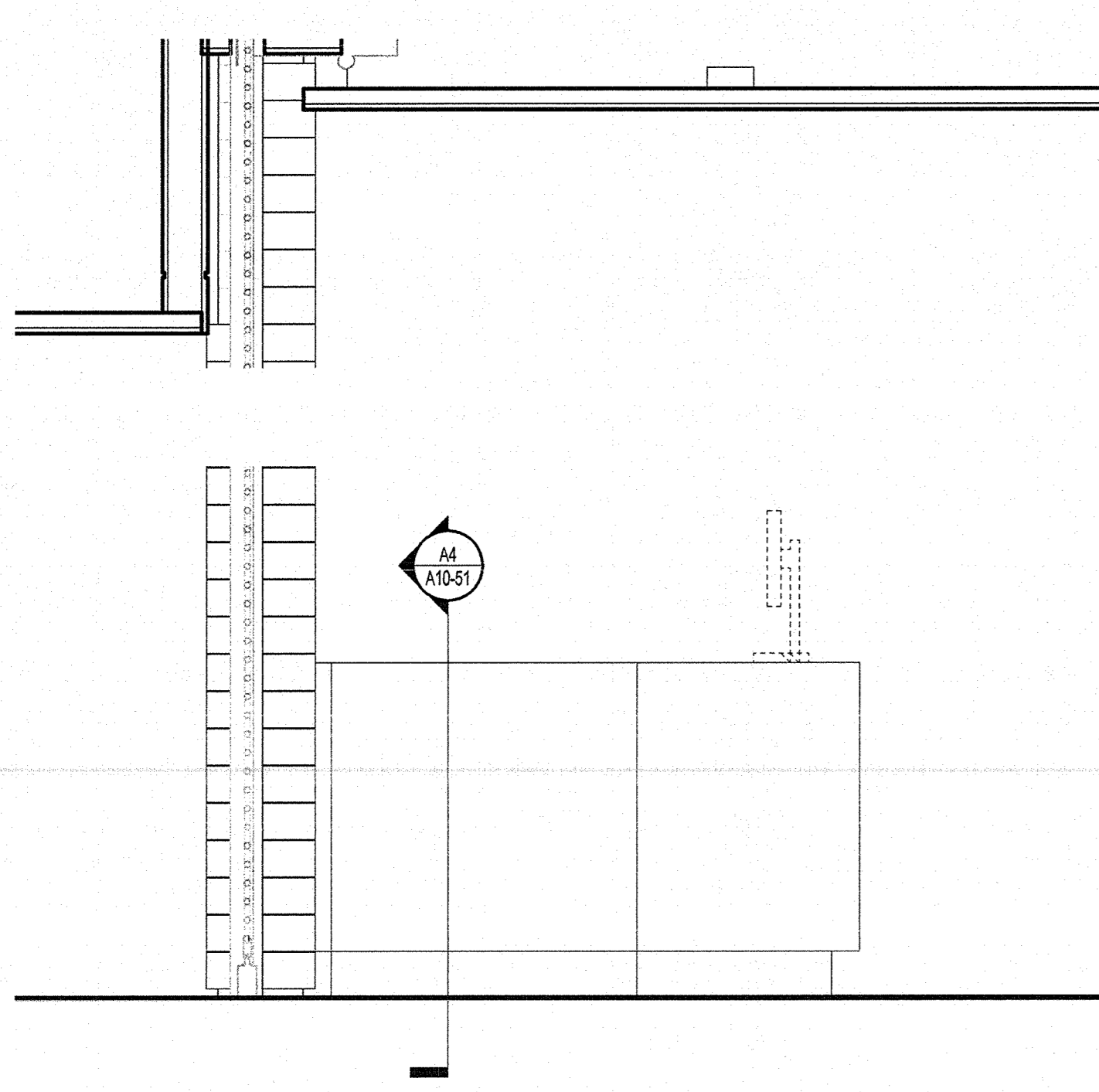
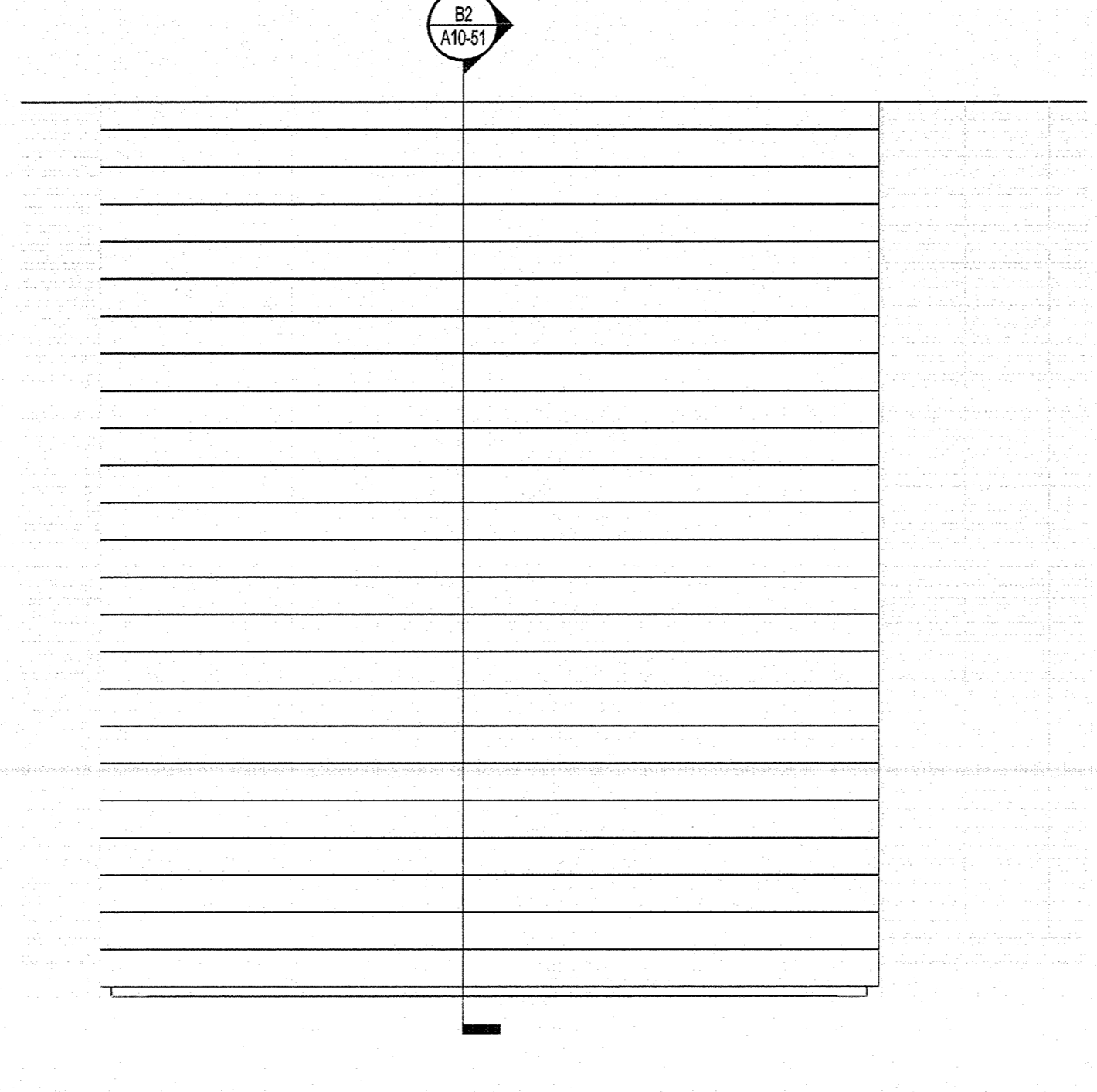


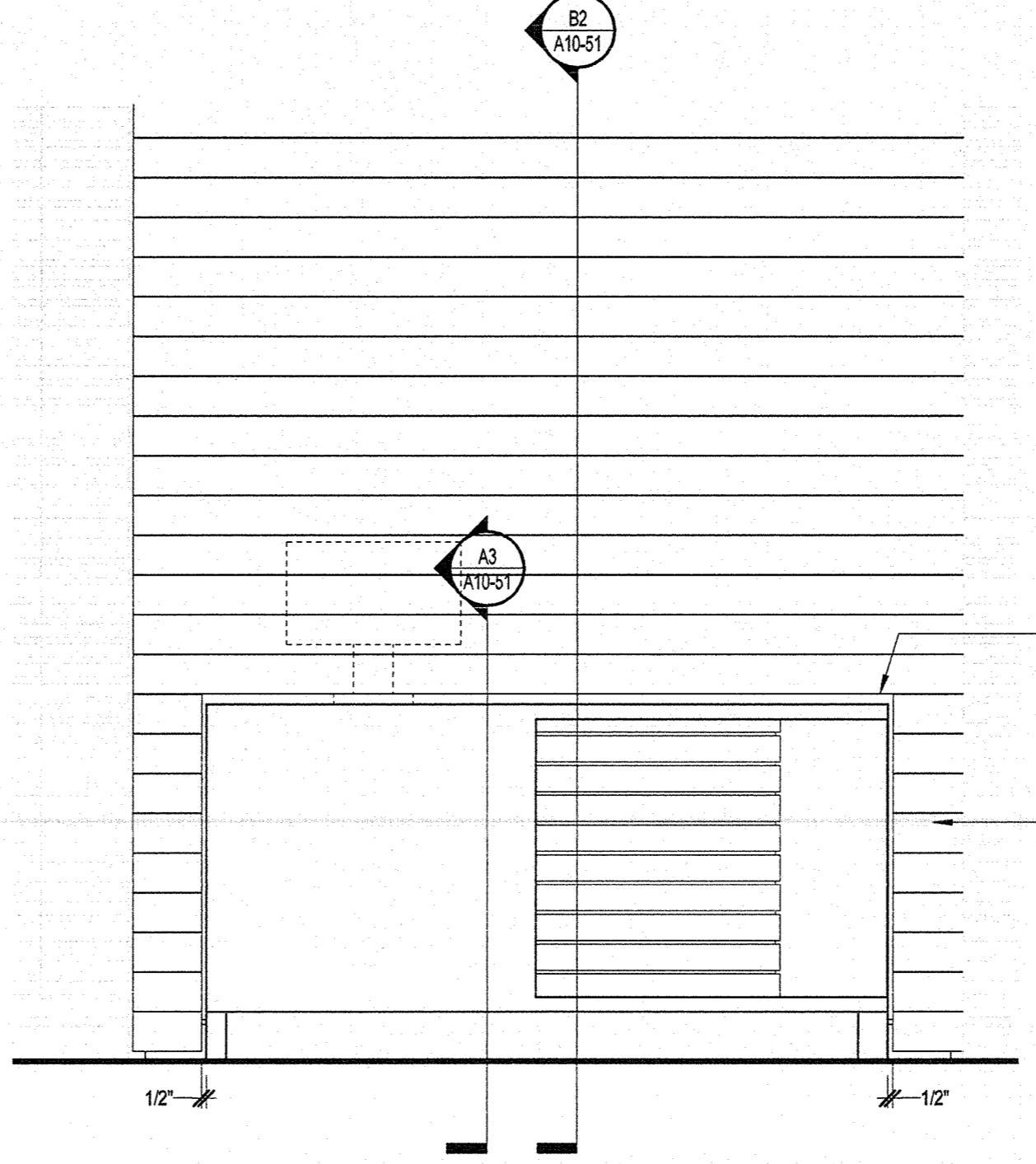
0 1/2" 1" 2"



C5 ELEVATION - CASHWRAP DOOR
3/4" = 1'-0"



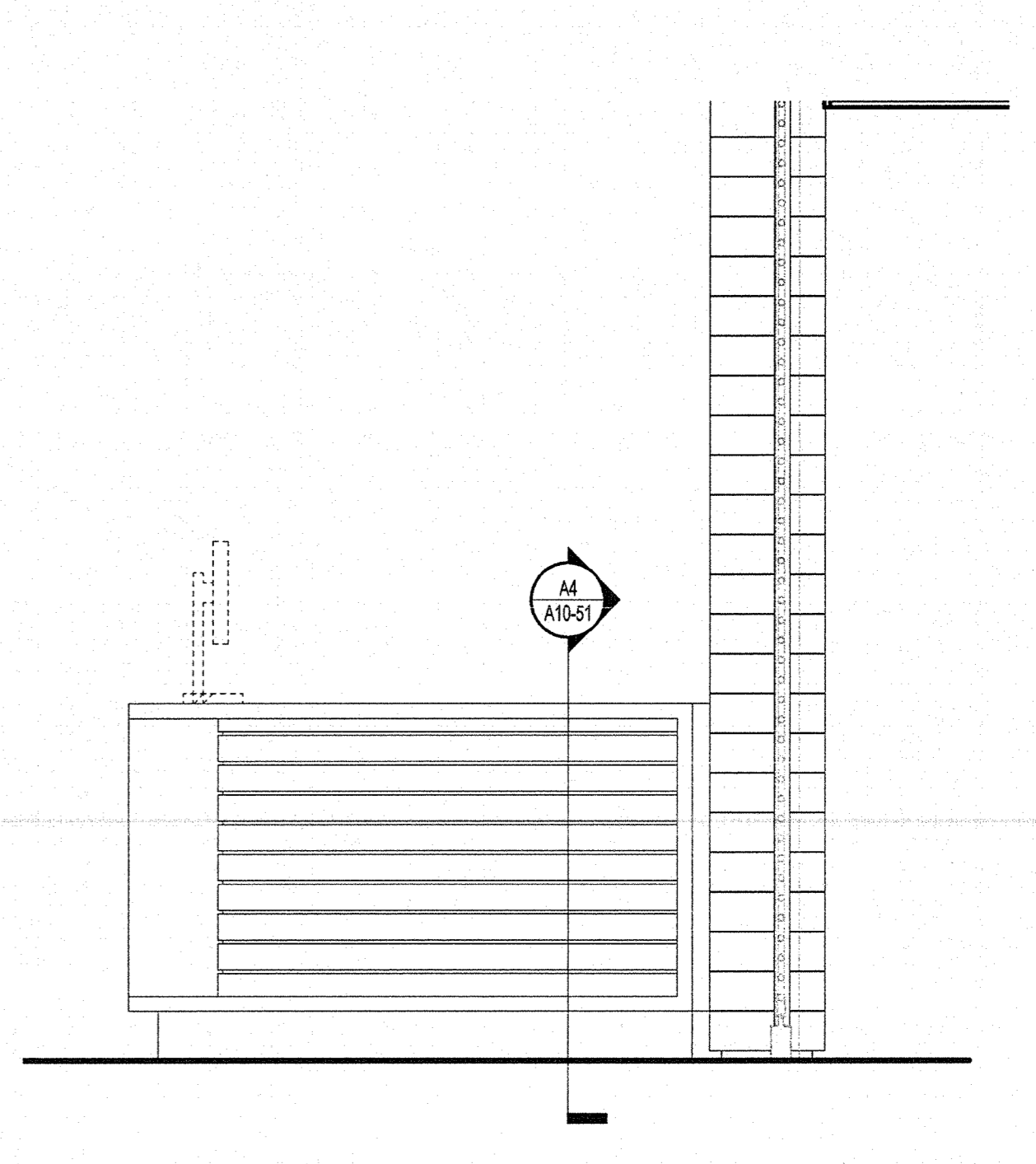
C4 ELEVATION - ENTRY WOOD WALL
3/4" = 1'-0"



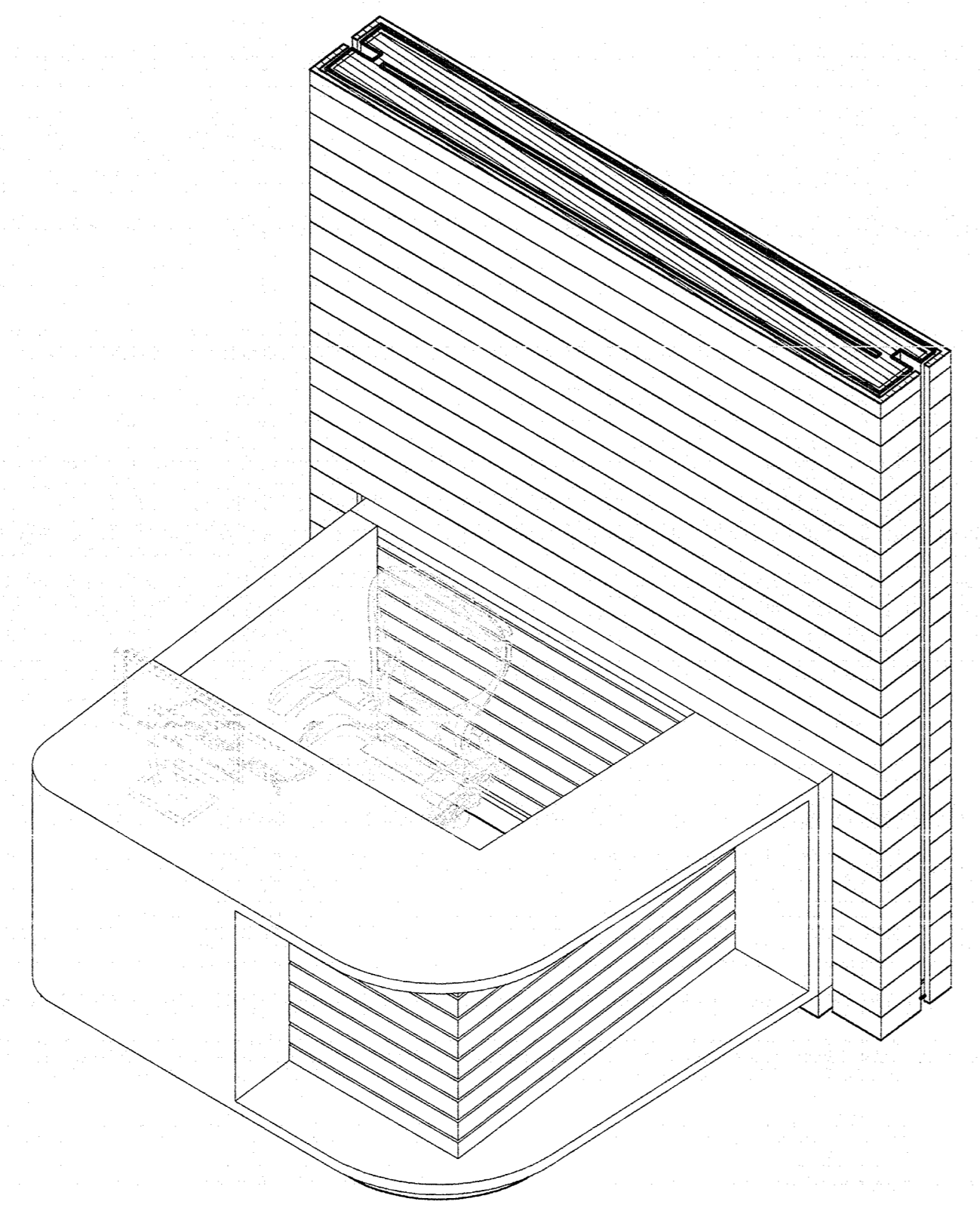
C3 ELEVATION - CASHWRAP FRONT
3/4" = 1'-0"

REVEAL TO PLANK JOINT
PAINT PFS

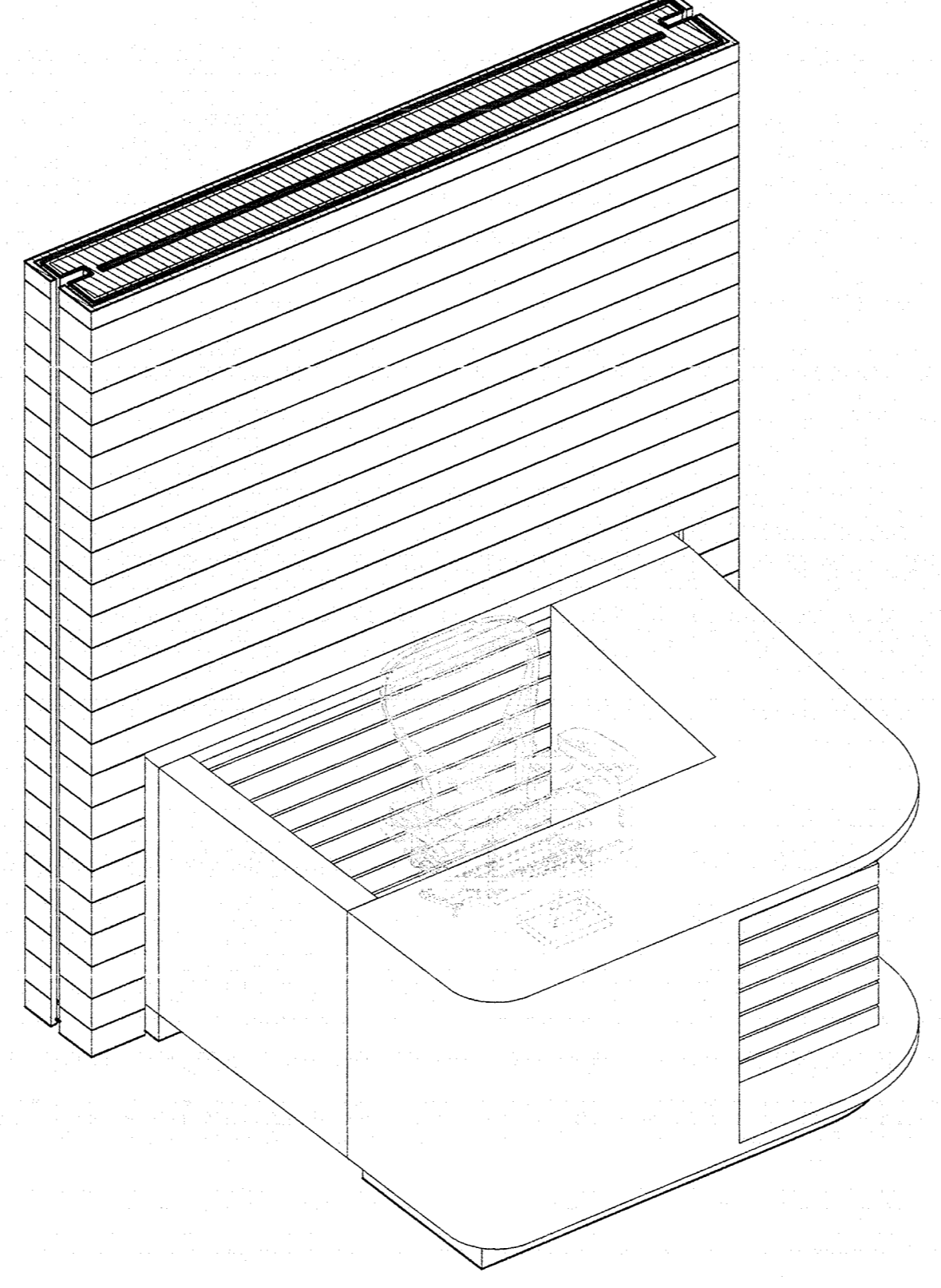
NOTE WOOD CONTINUES
AT SIDES OF STATION



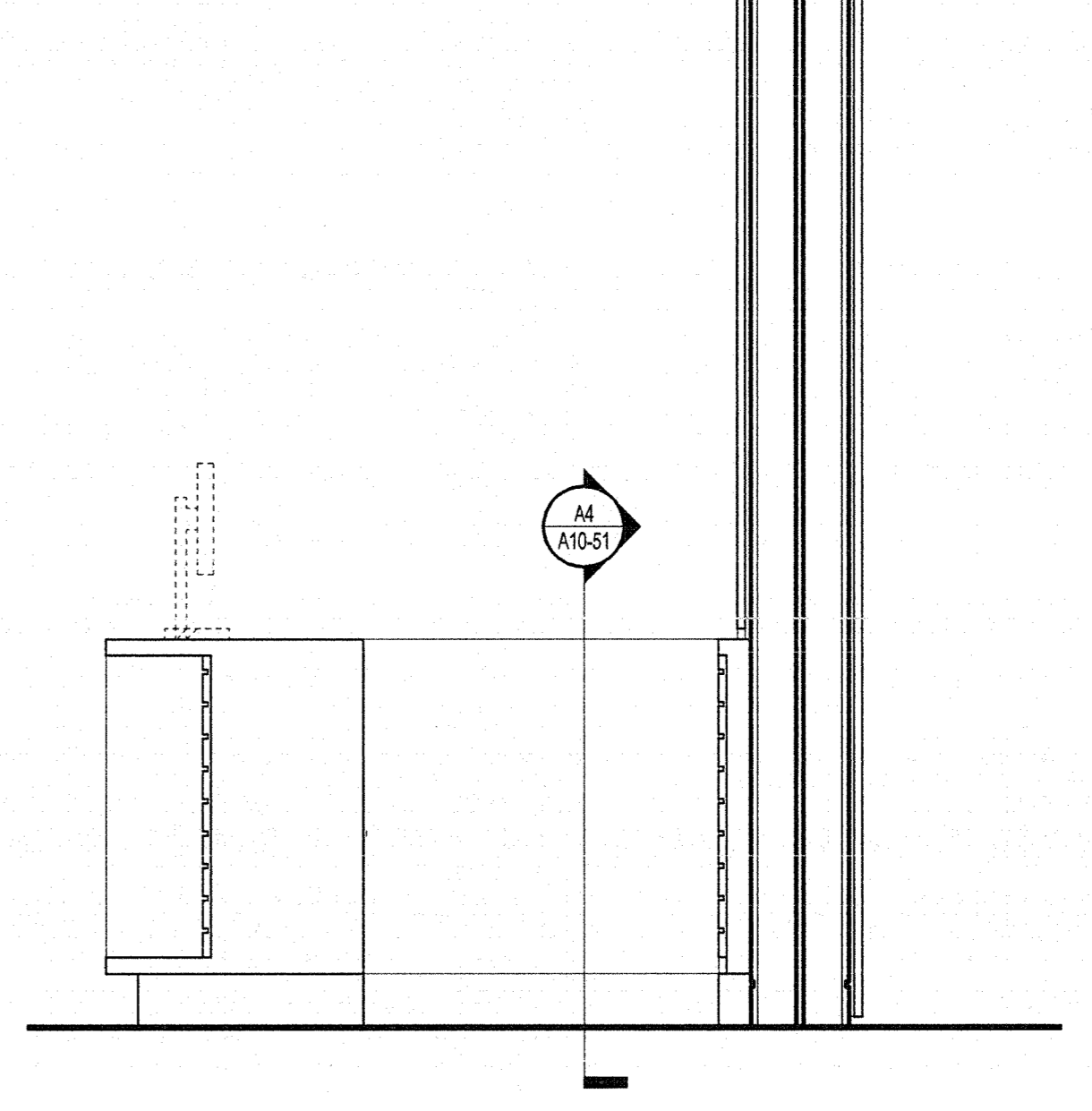
C2 ELEVATION - CASHWRAP TRANSACTION
3/4" = 1'-0"



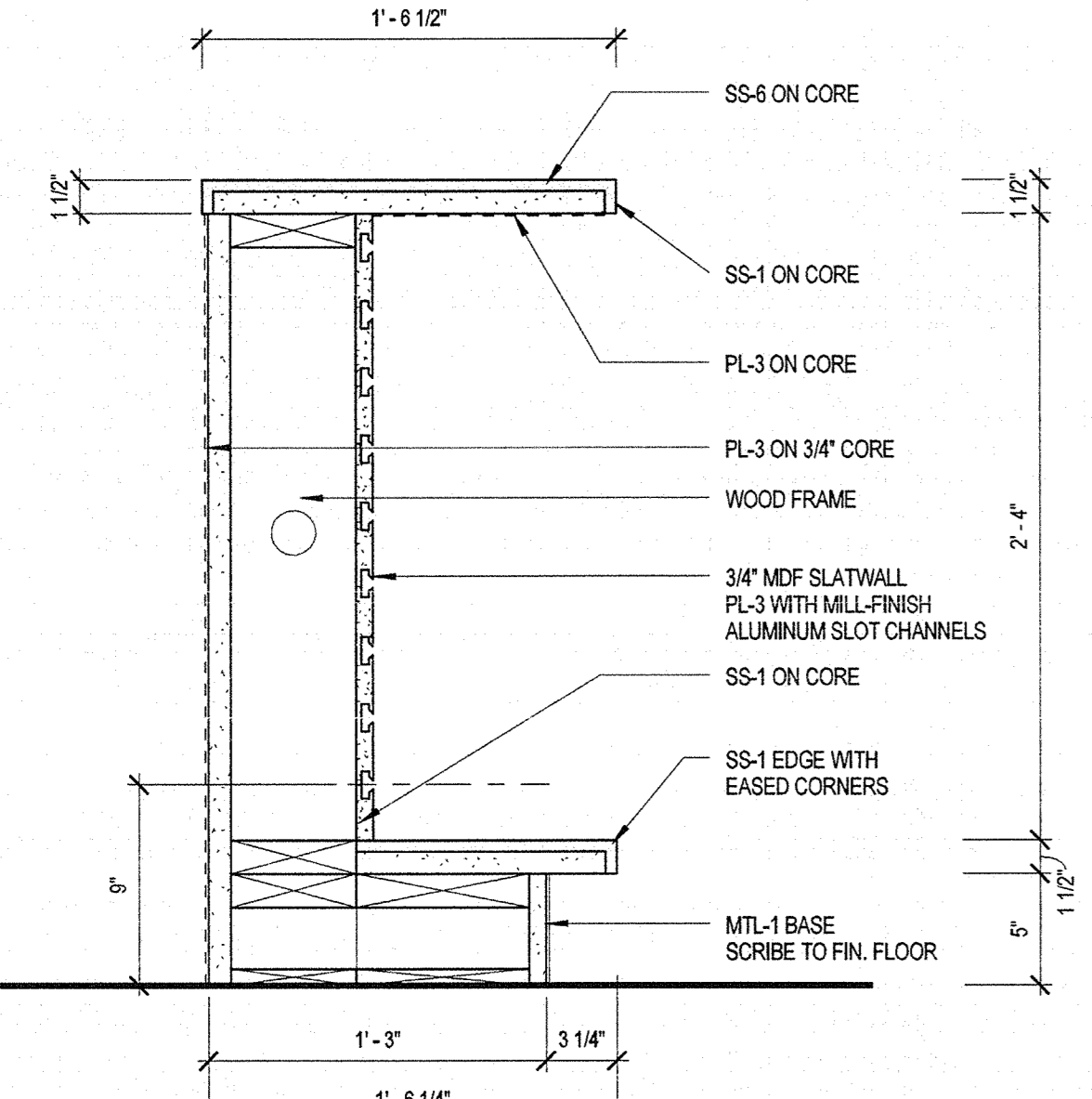
B5 AXONOMETRIC - CASHWRAP NO. 2



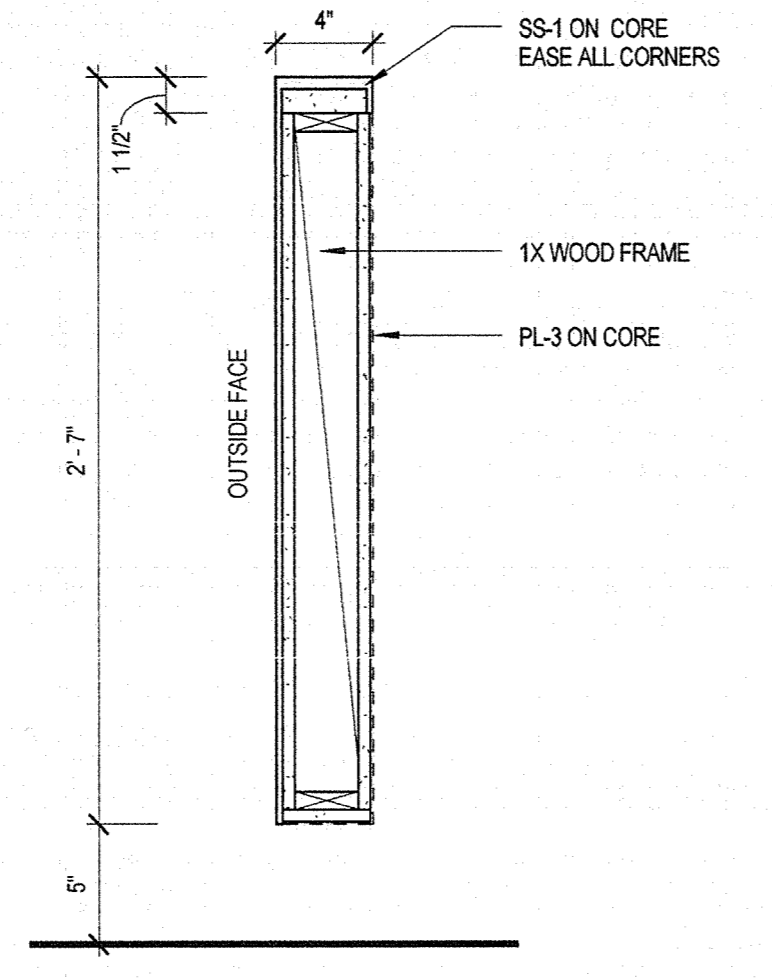
B4 AXONOMETRIC - CASHWRAP NO. 1



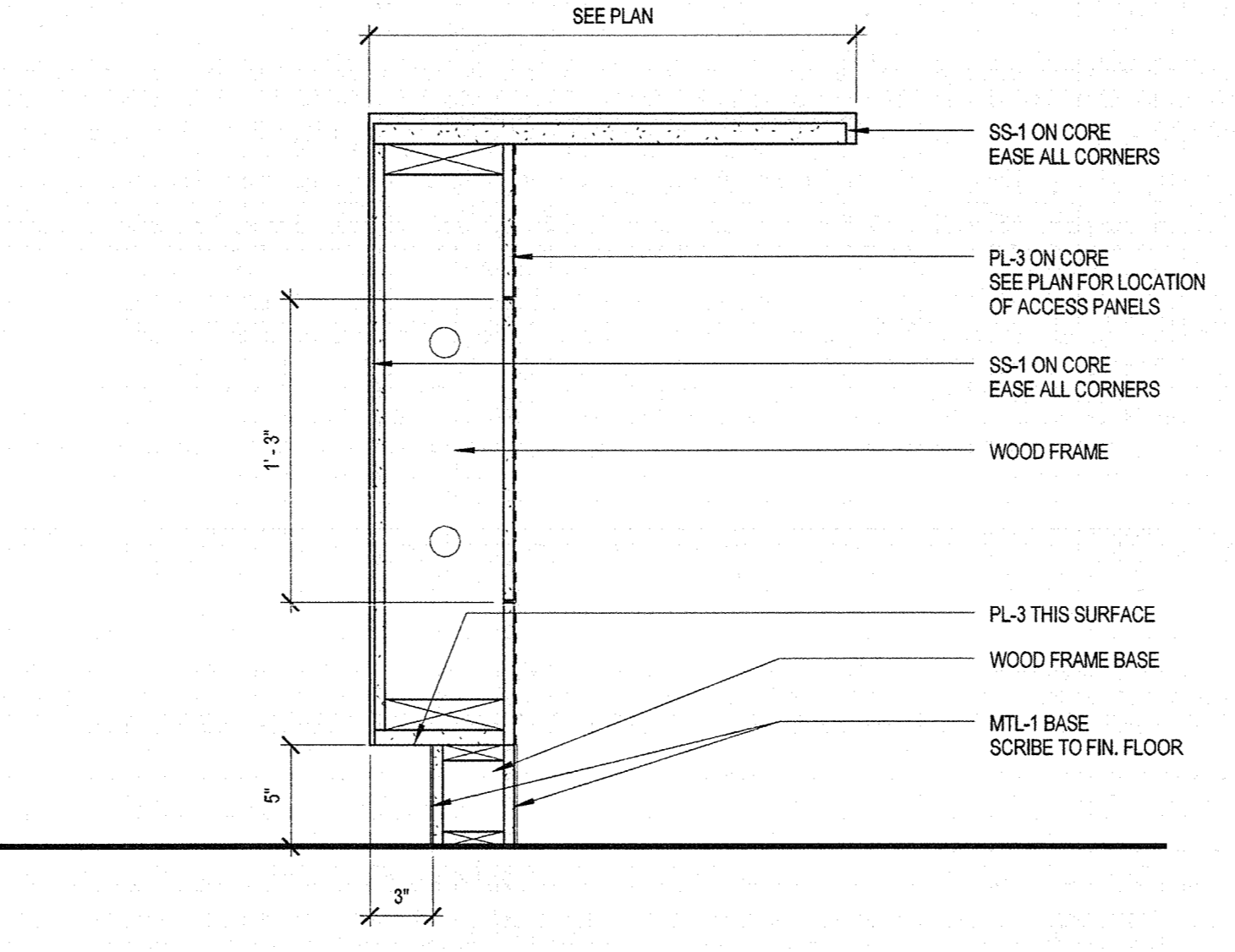
B2 SECTION - CASHWRAP
3/4" = 1'-0"



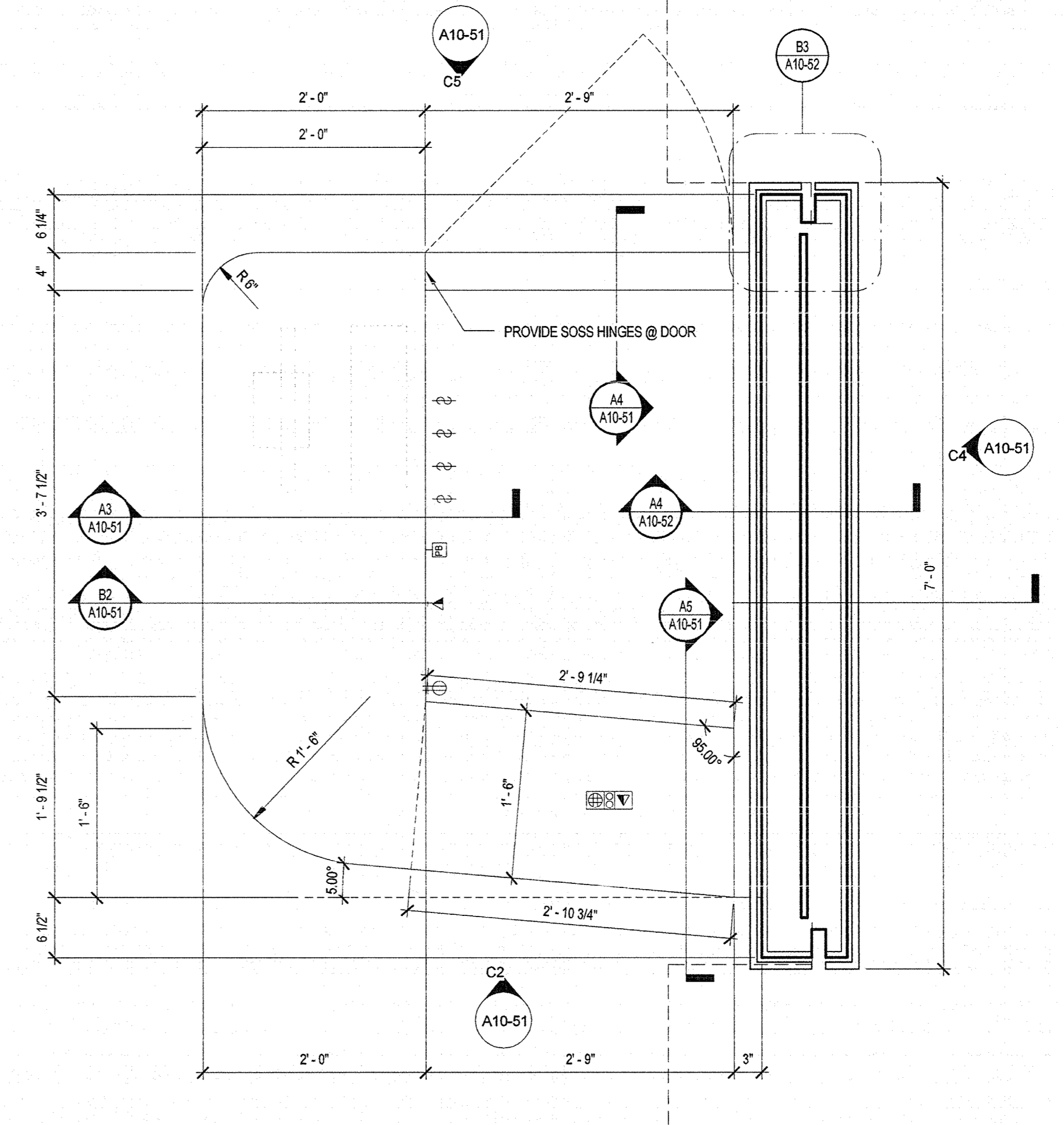
A5 SECTION - CASHWRAP TRANSACTION
1 1/2" = 1'-0"



A4 SECTION - CASHWRAP DOOR
1 1/2" = 1'-0"



A3 SECTION - CASHWRAP REGISTER
1 1/2" = 1'-0"



A2 ENLARGED PLAN - CASHWRAP
1" = 1'-0"

PERKINS + WILL

225 Franklin St., Suite 1100
Boston, MA 02110
1 817 478 0300
1 617 478 0301
www.perkinswill.com

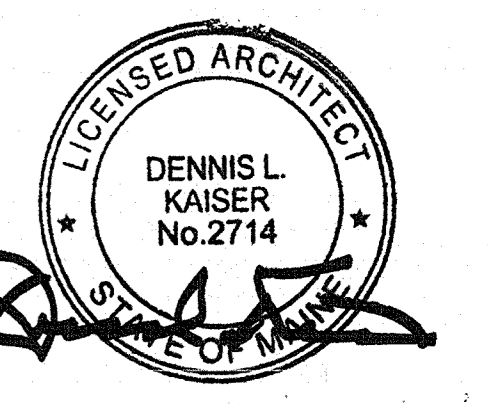
Maine Medical Center
MaineHealth

RETAIL PHARMACY
22 Bramhall Street, Portland, ME

MEP ENGINEER
AKF ENGINEERS

59 Bedford St. 2nd Floor
Boston, MA 02210
1 617 237 1111
1 617 237 4311

STRUCTURAL ENGINEER
SIMPSON GUMPERTZ & HEGER
41 Seyon Street, Building 1, Suite 500
Waltham, MA 02453
1 781 507 9000
1 781 507 9009



Revisions

| NO | ISSUE | DATE |
|----|-------------------|------------|
| 1 | ISSUED FOR BID | 07.11.2014 |
| 1 | ISSUED FOR PERMIT | 08.11.2014 |

Sheet Information

Date: AUGUST 11, 2014
 Job #: 152188.010
 Drawn: _____ Author
 Checked: _____ Checker
 Approved: _____ Approver

Title

MILLWORK
DETAILS - POINT
OF SALE

Sheet
A10-51

Copyright © 2011 Perkins+Will

8/11/2014 2:37:39 PM
c:\temp\152188_010_MMC CAMPUS PHARMACY.dwg