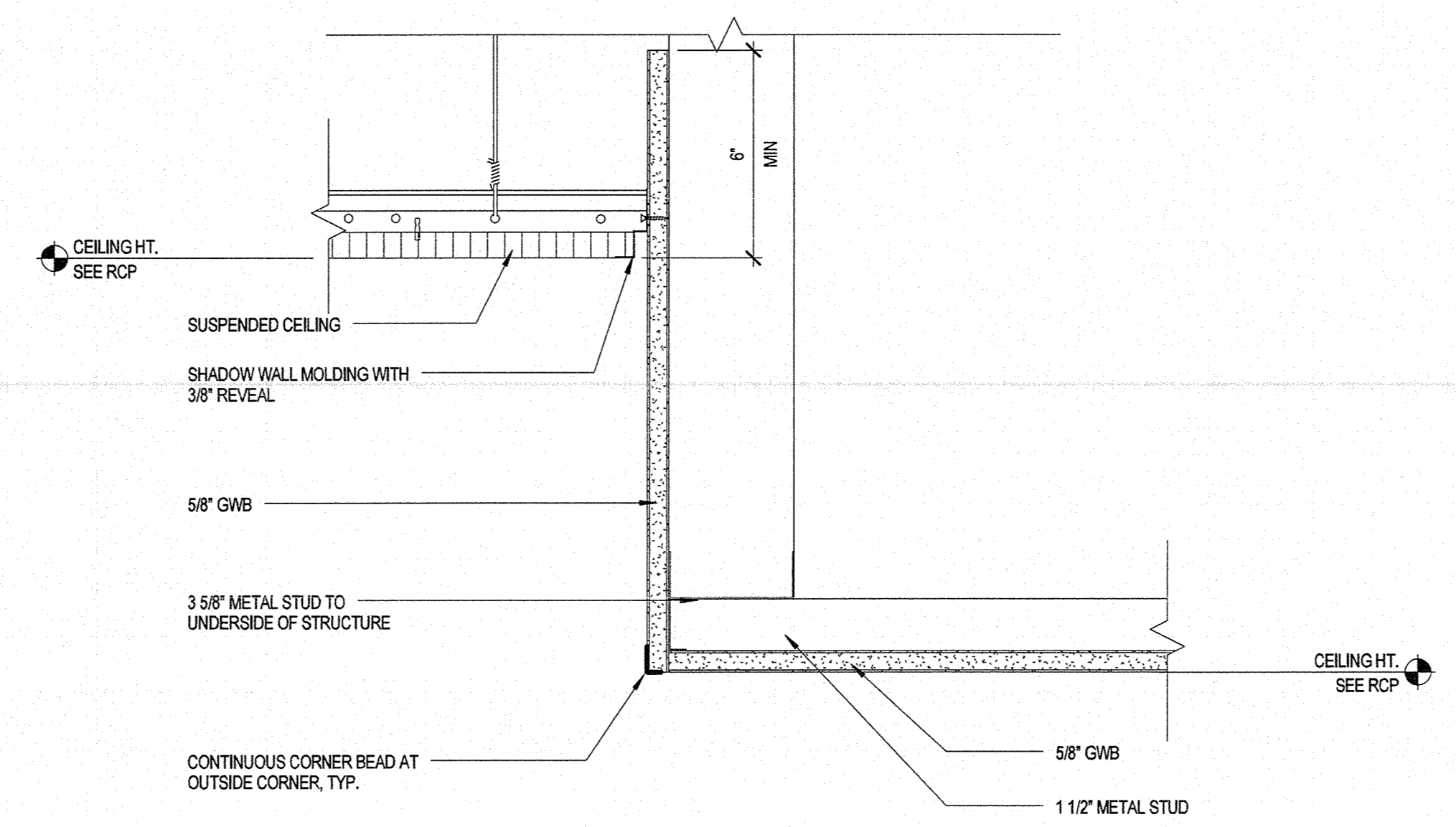
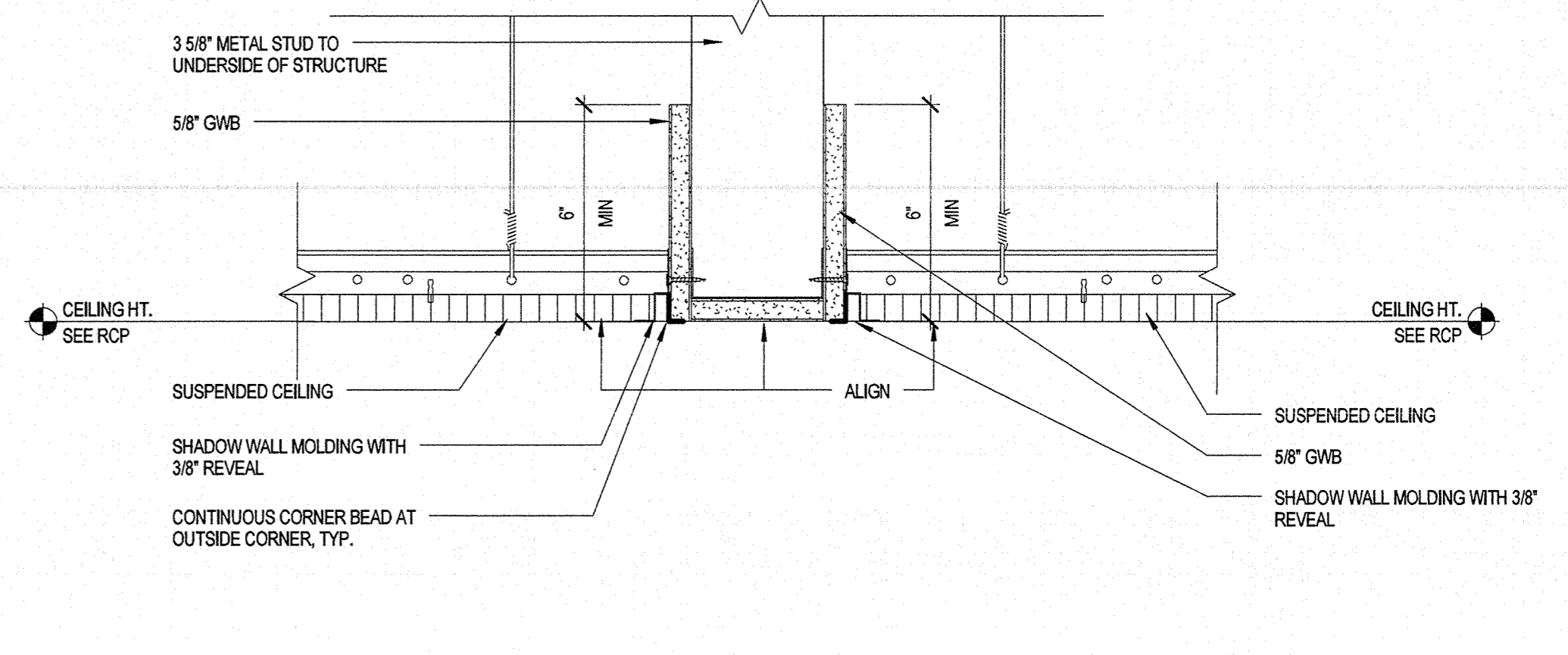


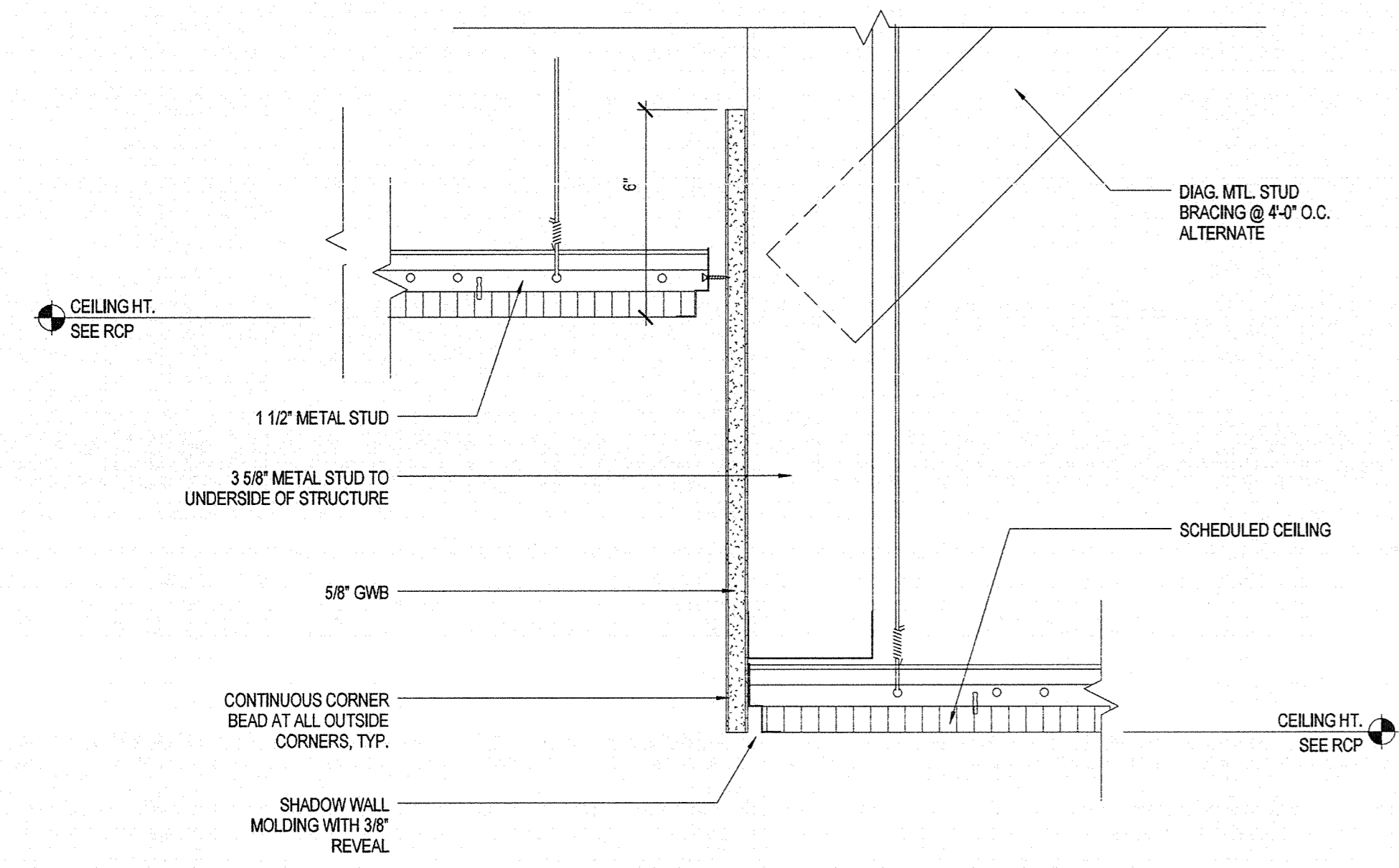
**C3 SOFFIT DETAIL - AT CASEWORK**  
3" = 1'-0"



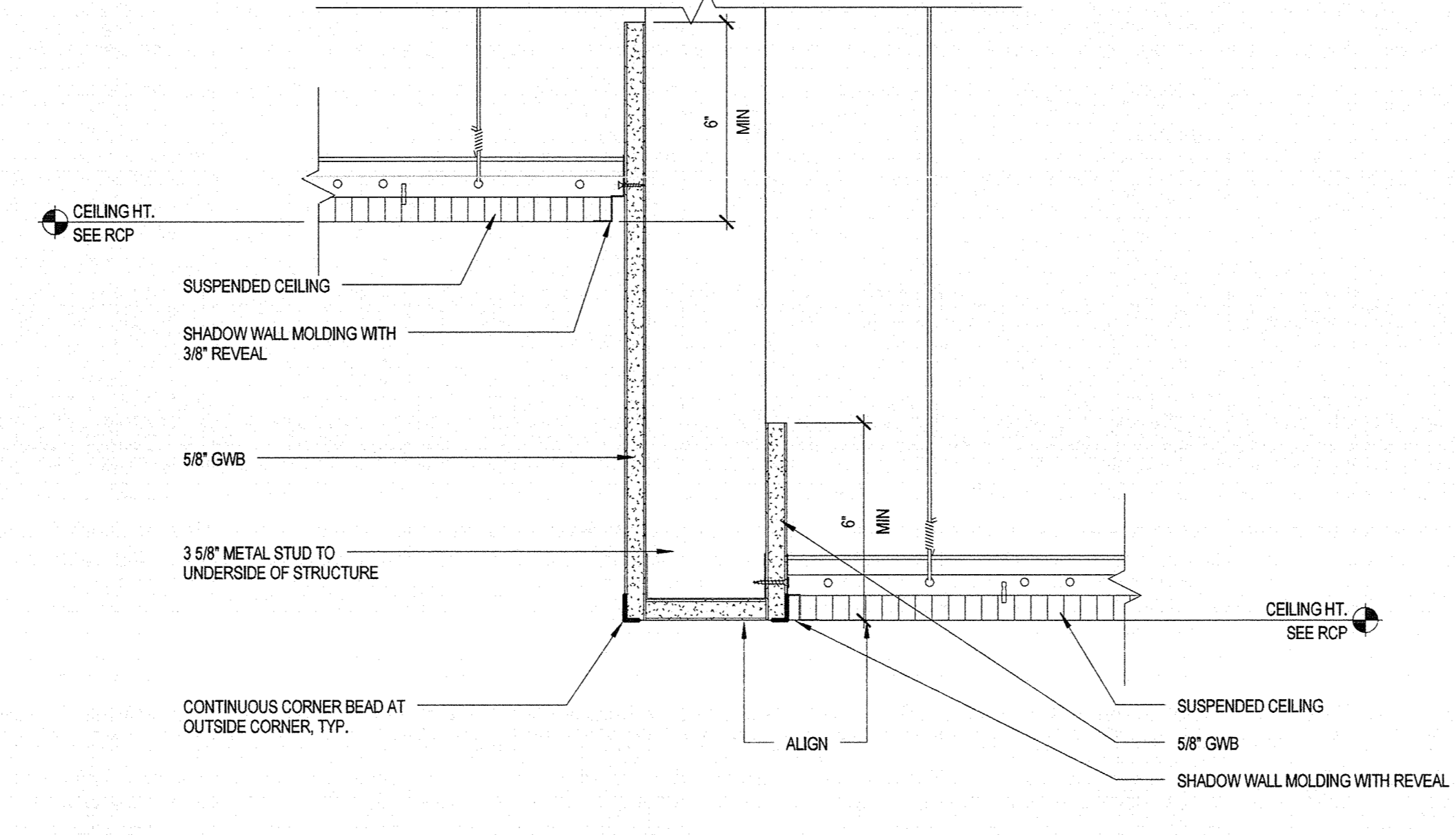
**C2 SOFFIT DETAIL - ACT TO LOWER GWB**  
3" = 1'-0"



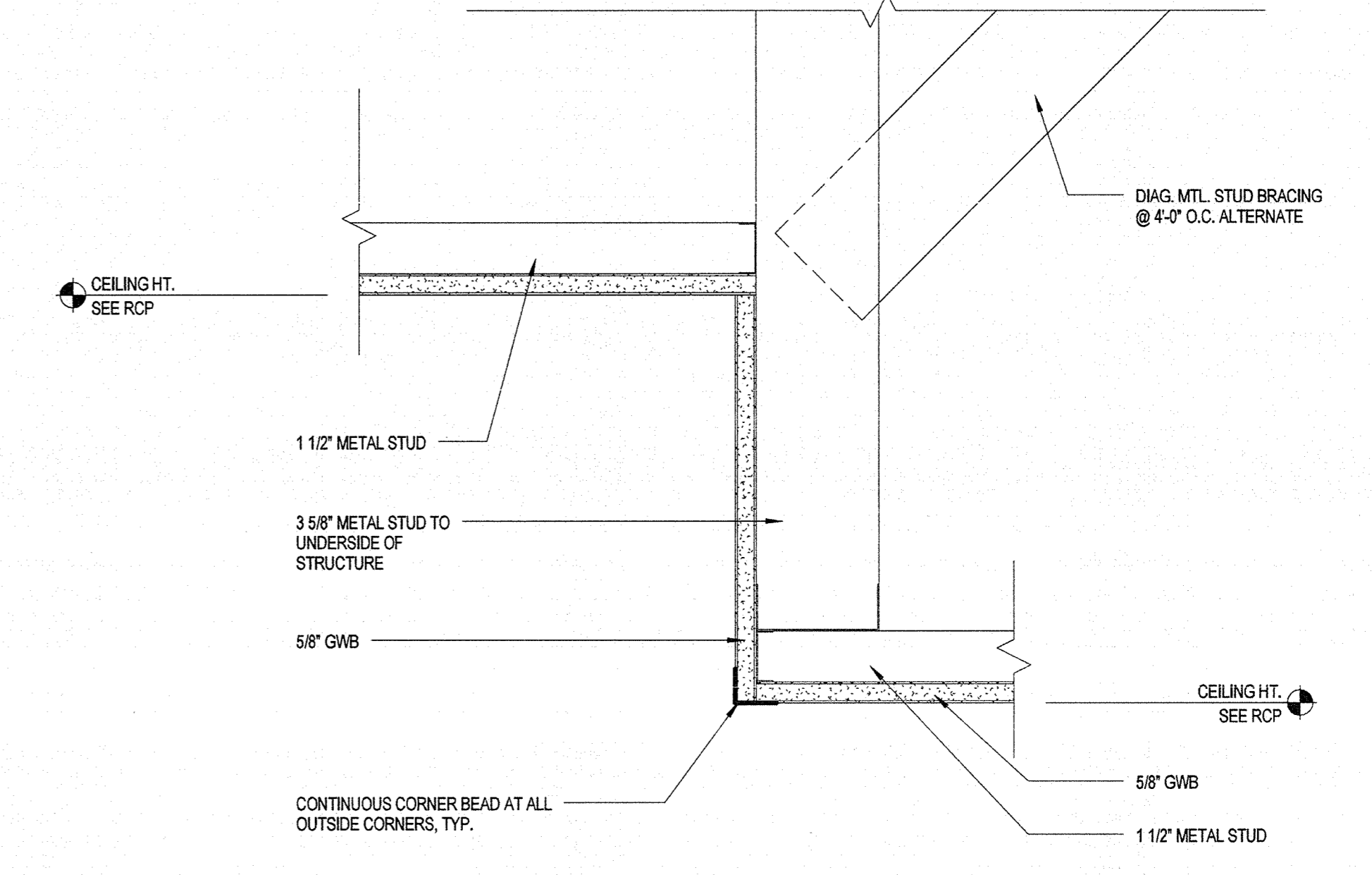
**C1 FLUSH CEILING DETAIL - ACT TO GWB TO ACT**  
3" = 1'-0"



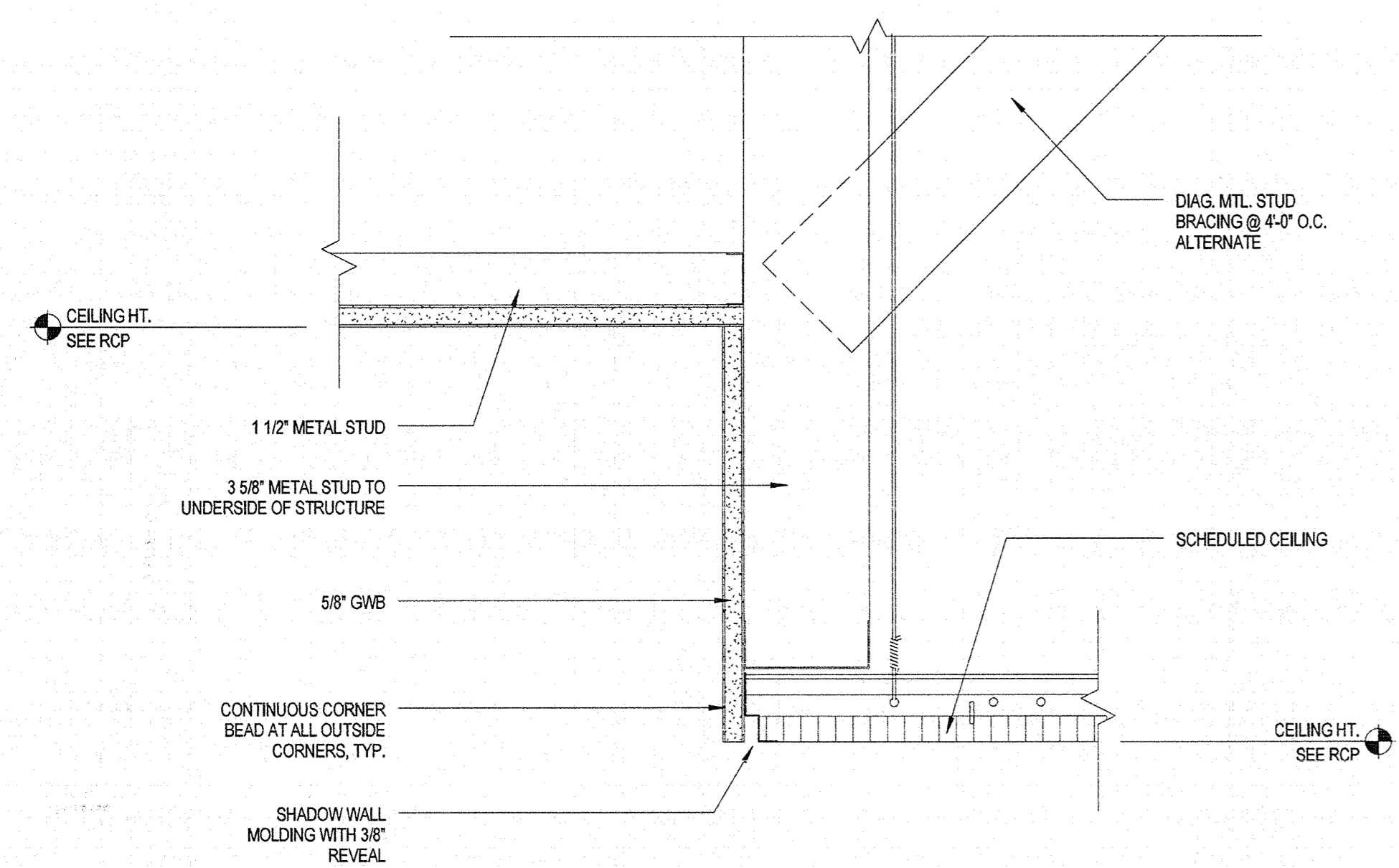
**B3 DETAIL @ ACT/ACT SOFFIT**  
3" = 1'-0"



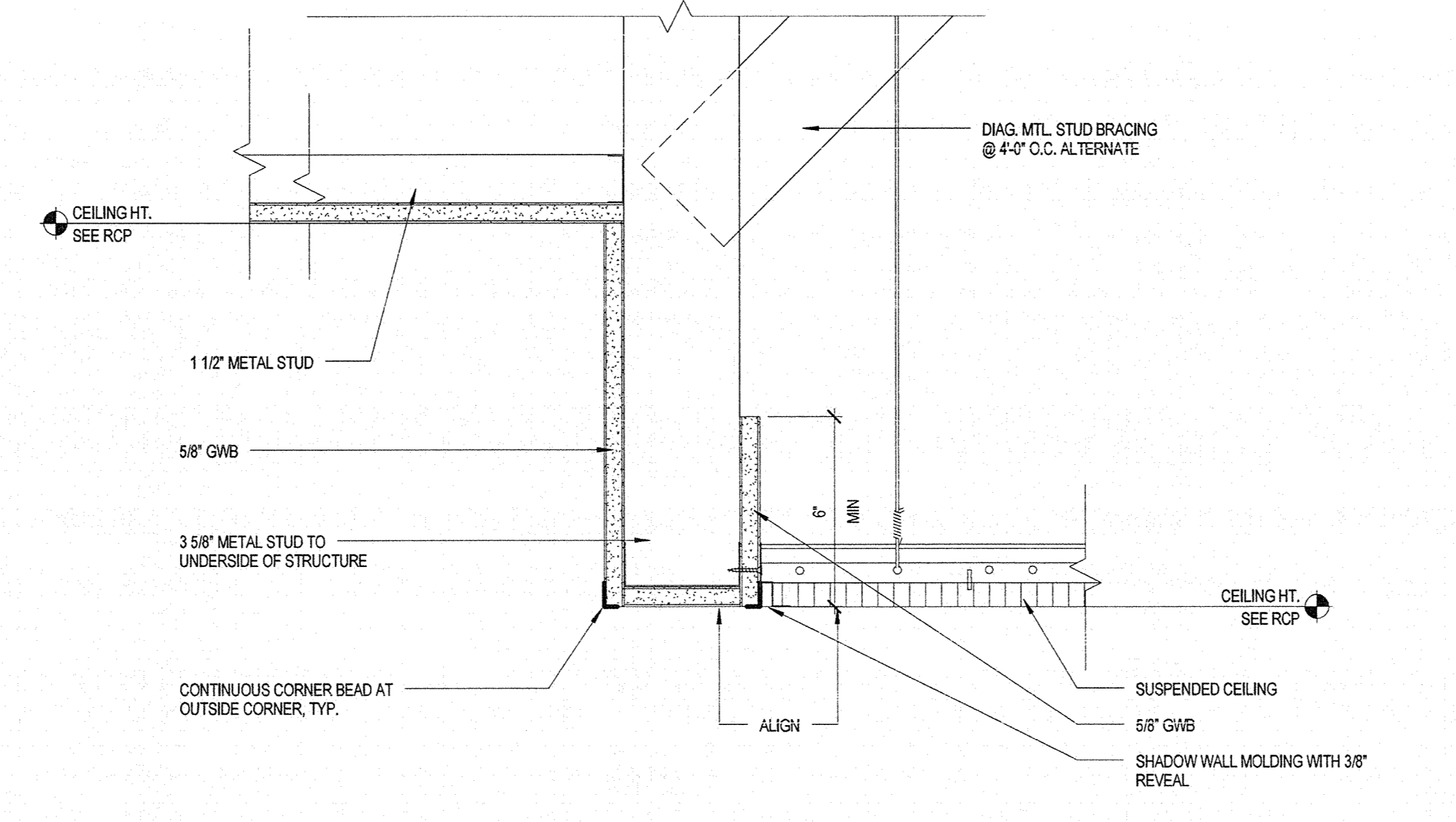
**B2 CEILING HEIGHT TRANSITION - ACT TO ACT**  
3" = 1'-0"



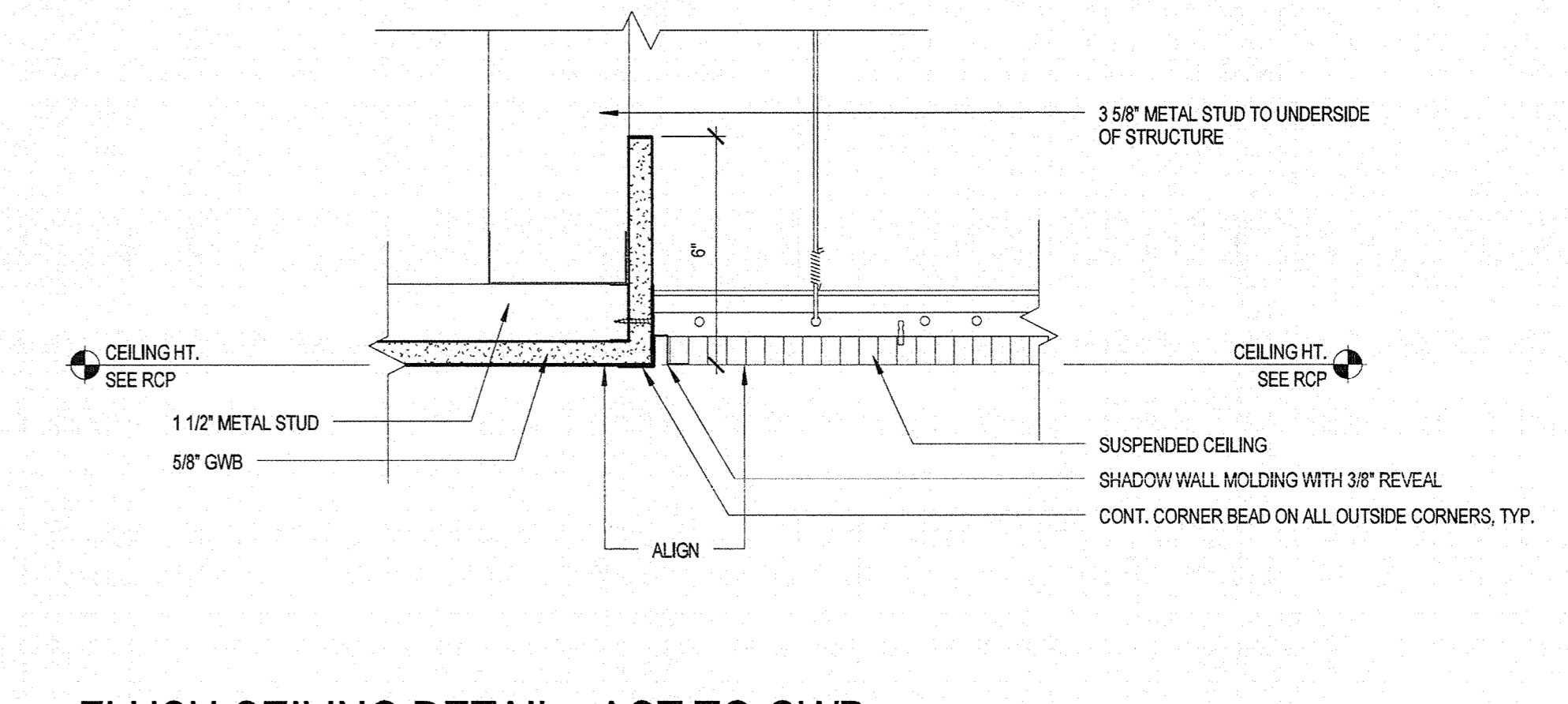
**B1 CEILING HEIGHT TRANSITION - GWB TO GWB**  
3" = 1'-0"



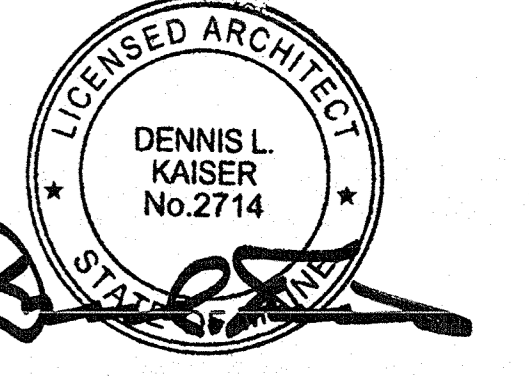
**A3 DETAIL @ ACT/GWB SOFFIT**  
3" = 1'-0"



**A2 CEILING HEIGHT TRANSITION - GWB TO ACT**  
3" = 1'-0"



**A1 FLUSH CEILING DETAIL - ACT TO GWB**  
3" = 1'-0"



Revisions

NO	ISSUE	DATE
1	ISSUED FOR PERMIT	08.11.2014
1	ISSUED FOR BID	07.11.2014

**Sheet Information**

Date	AUGUST 11, 2014
Job #	152168.010
Drawn	Author
Checked	Checker
Approved	Approver
Title	

**INTERIOR DETAILS**