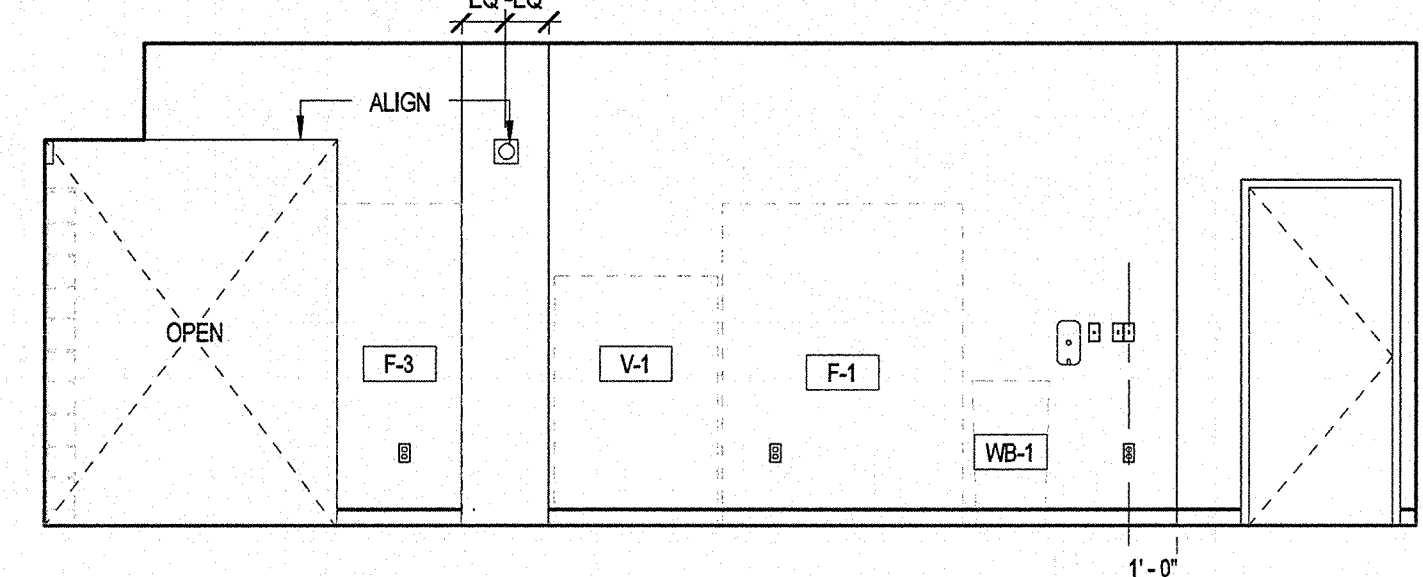
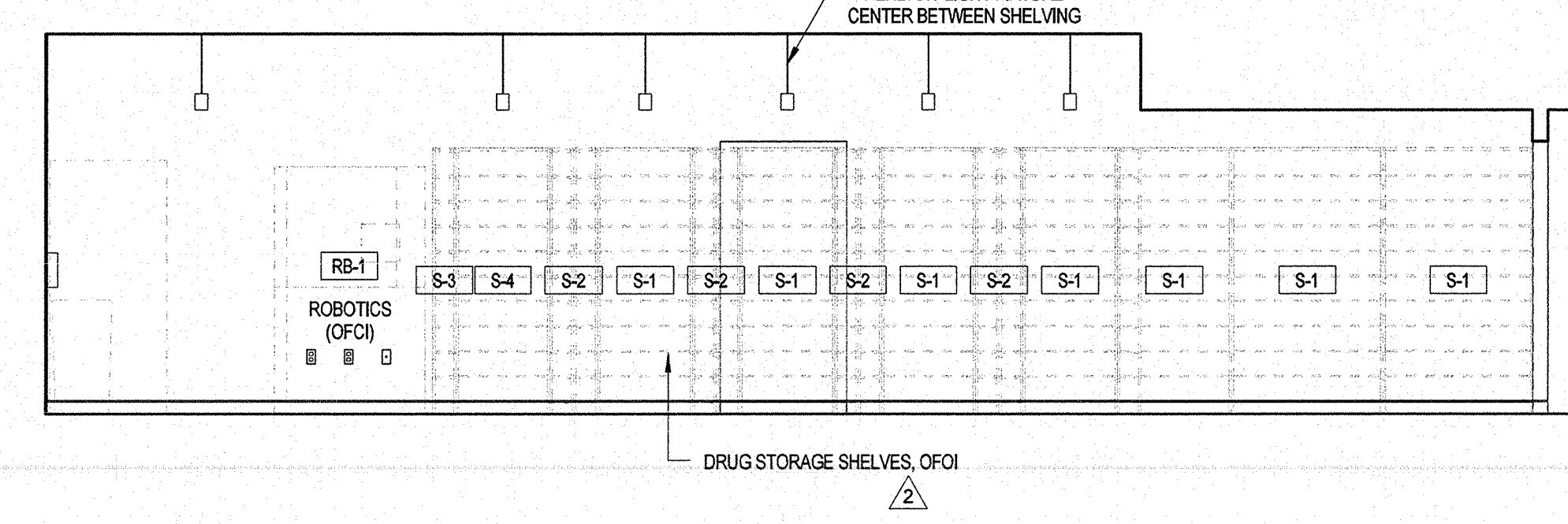


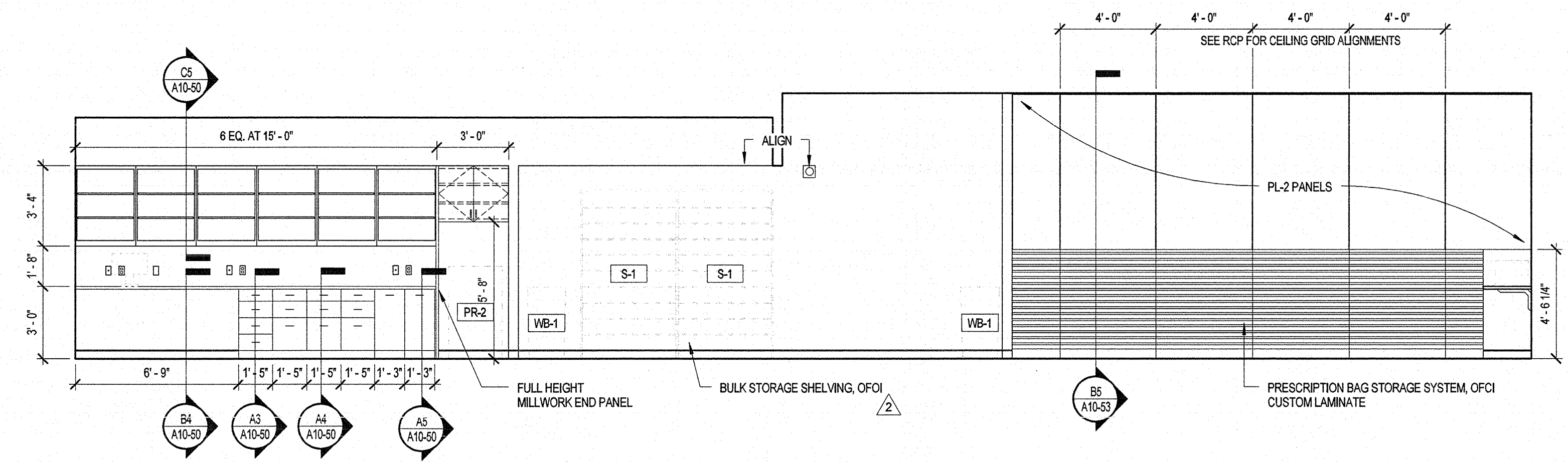
D4 PHARMACY SOUTH
1/4" = 1'-0"



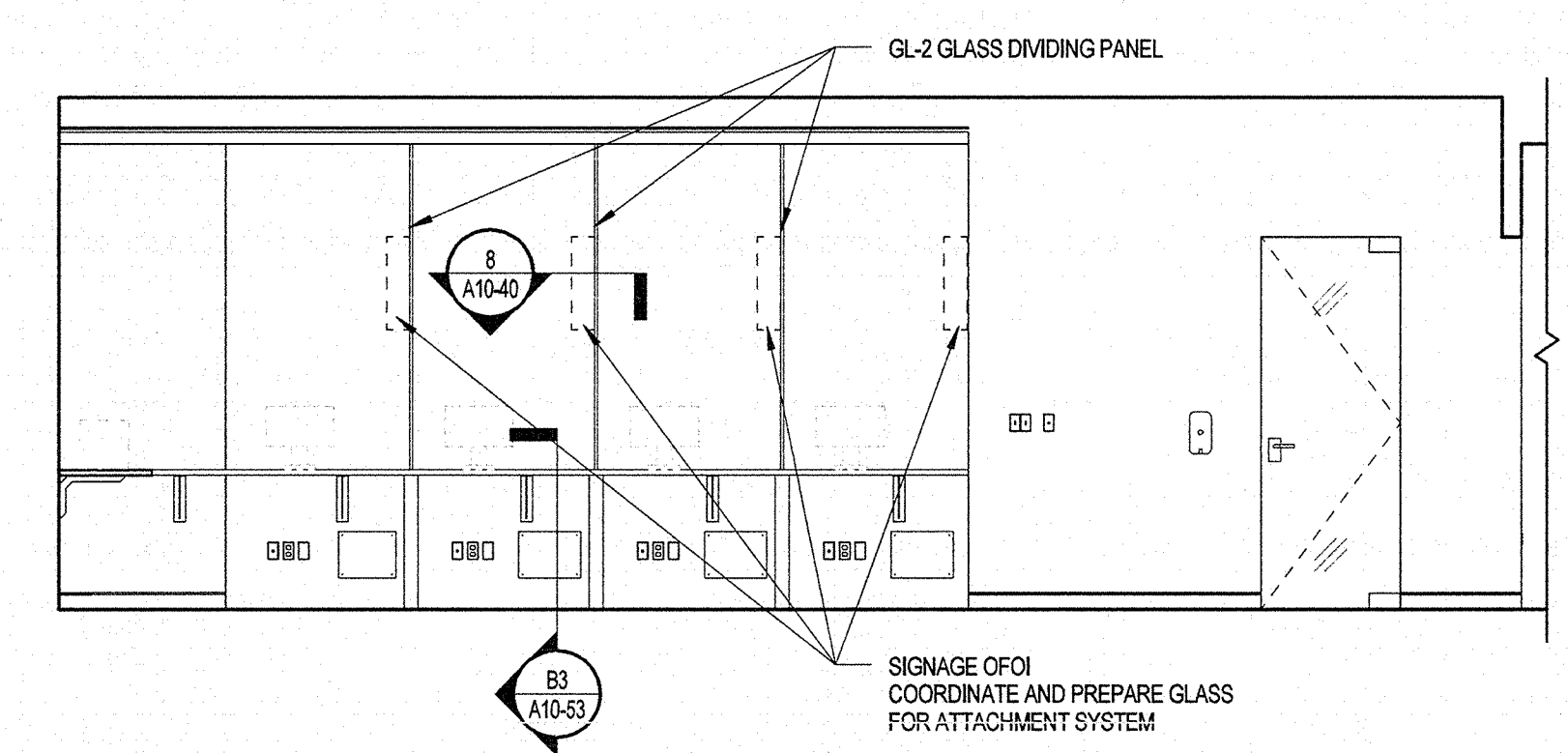
D3 PHARMACY NORTH
1/4" = 1'-0"



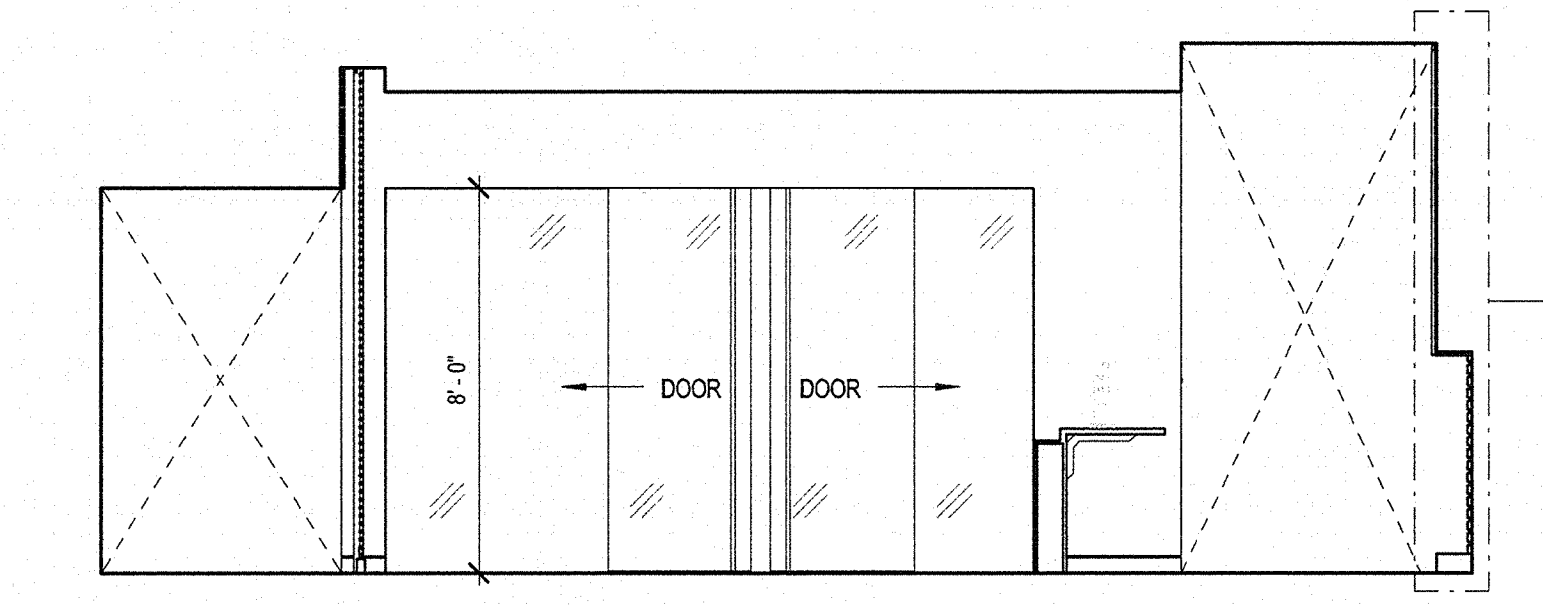
D2 PHARMACY EAST
1/4" = 1'-0"



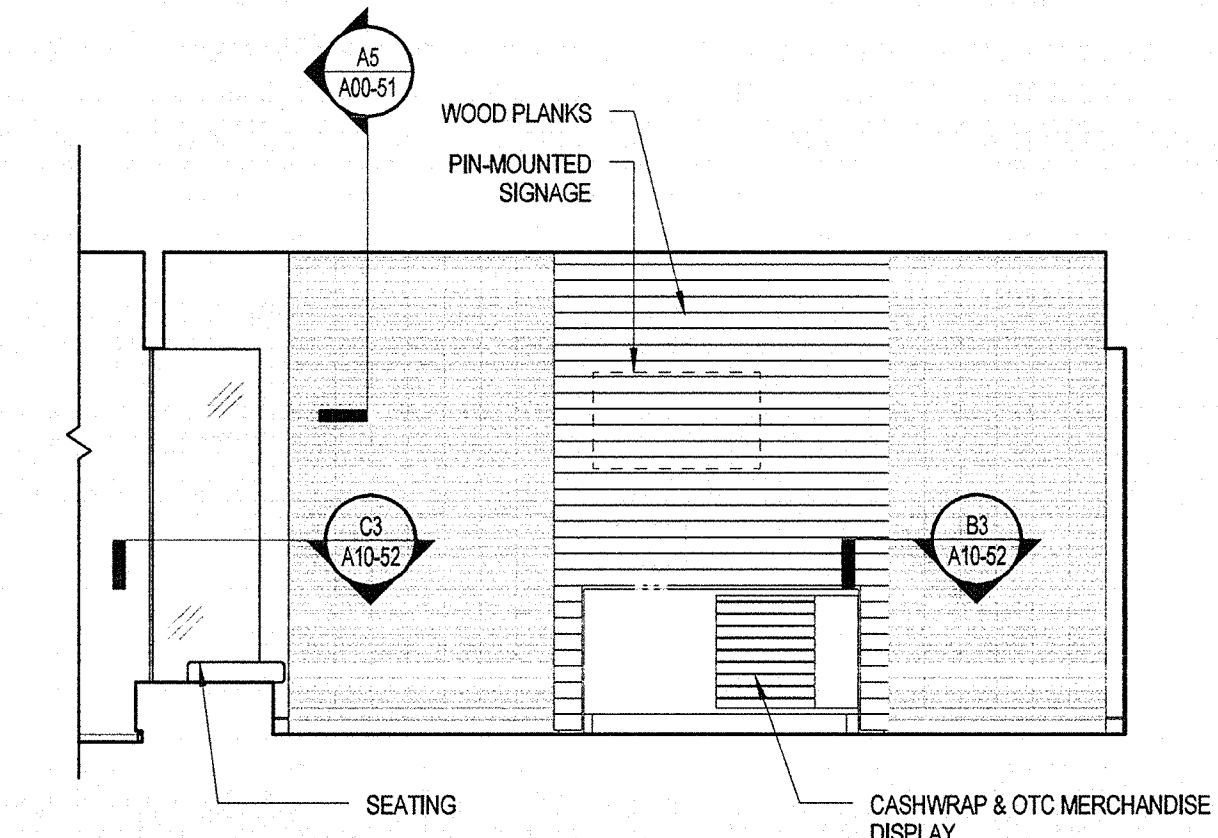
C5 PHARMACY WEST
1/4" = 1'-0"



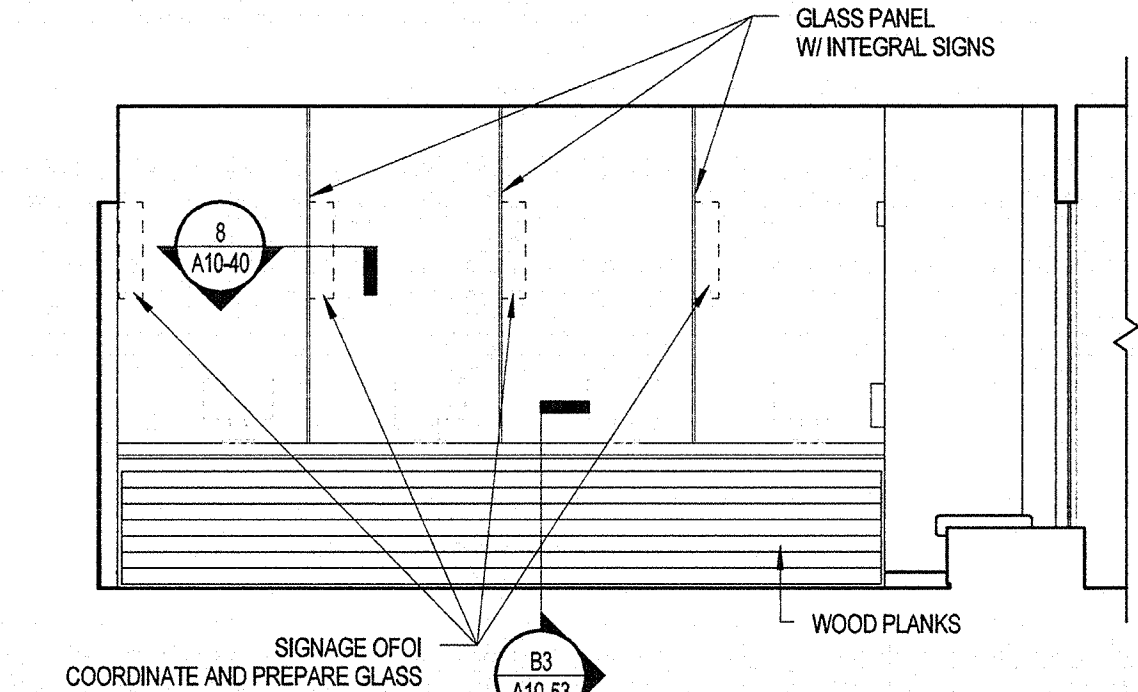
C3 RETAIL COUNTER EAST
1/4" = 1'-0"



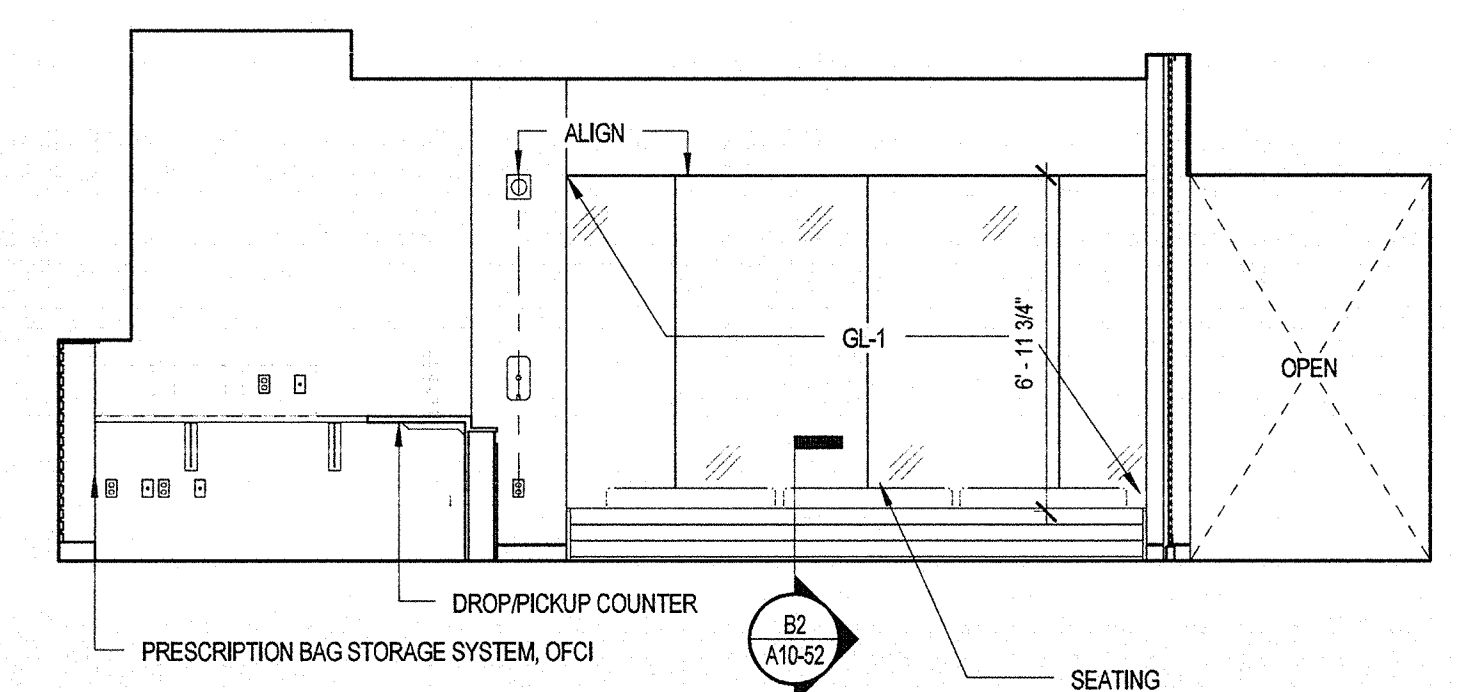
C1 RETAIL SOUTH
1/4" = 1'-0"



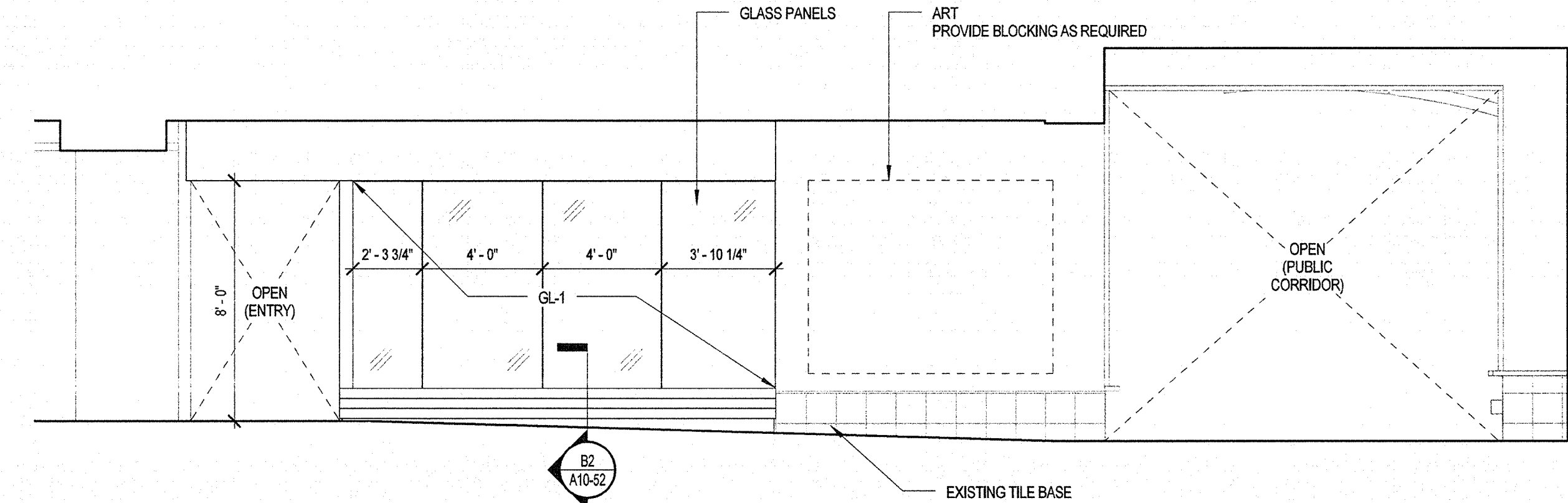
B5 RETAIL EAST
1/4" = 1'-0"



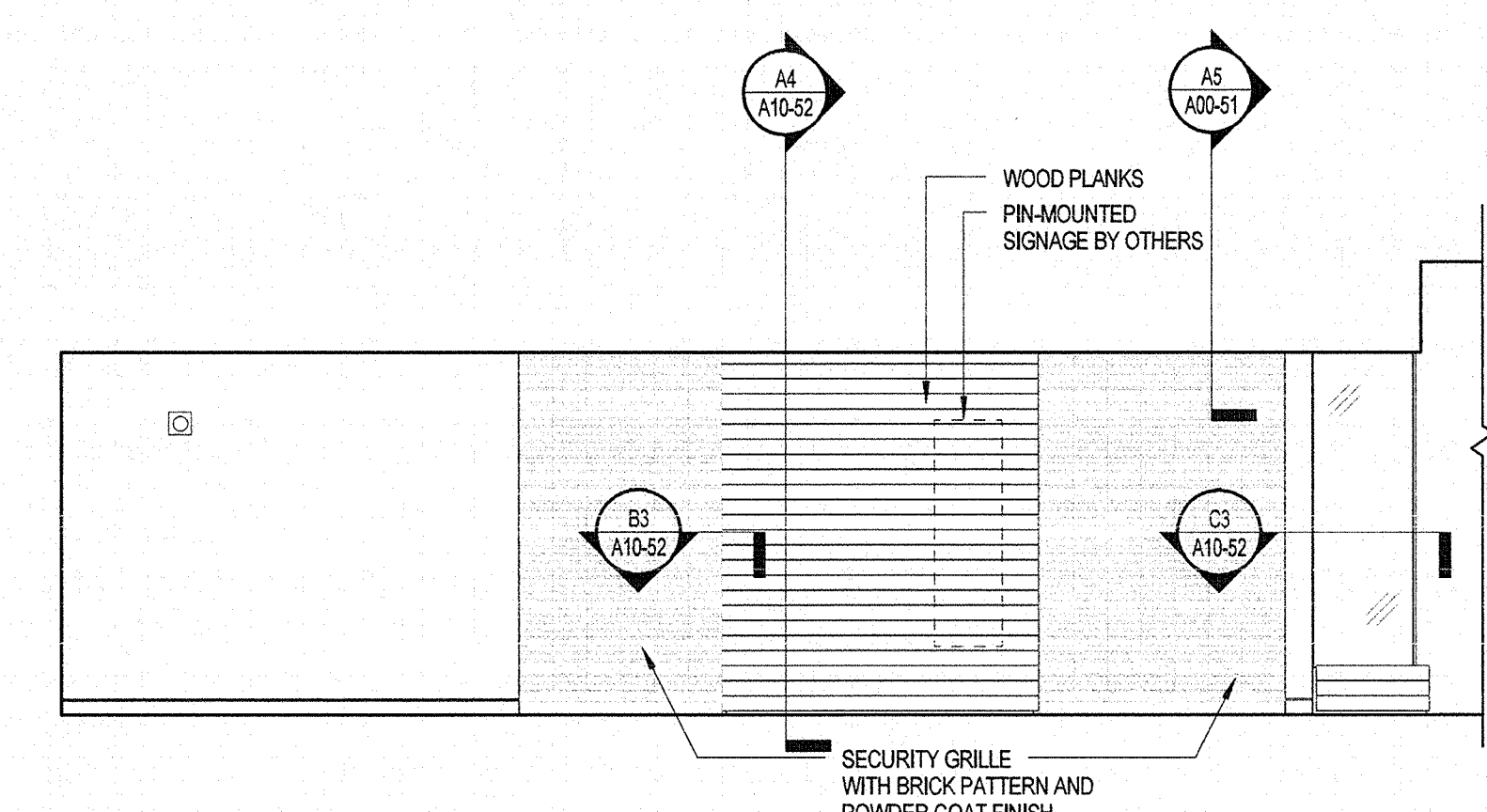
B4 RETAIL WEST
1/4" = 1'-0"



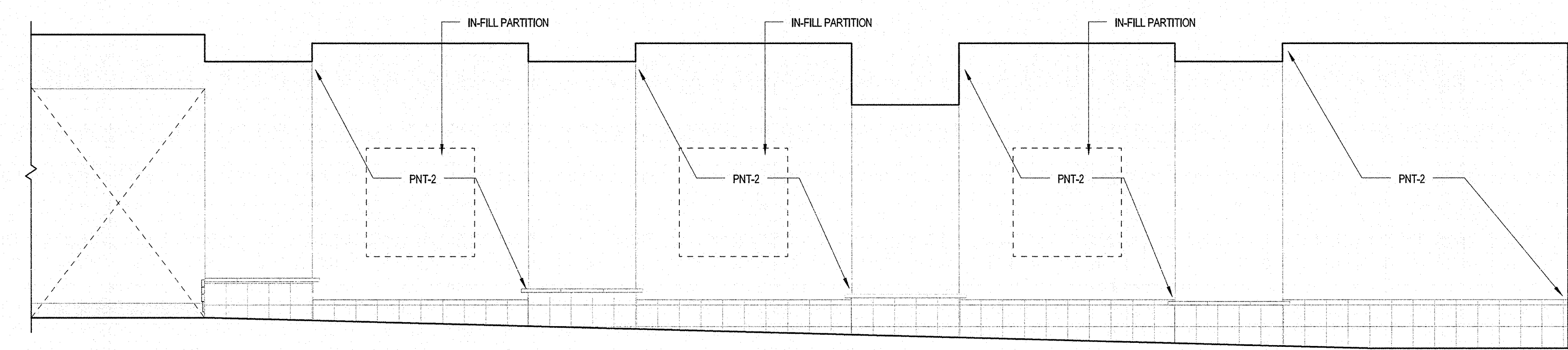
B3 RETAIL NORTH
1/4" = 1'-0"



B2 ENTRY SOUTH
1/4" = 1'-0"



A5 RETAIL ENTRY
1/4" = 1'-0"



A4 PUBLIC CORRIDOR EAST
1/4" = 1'-0"



Revisions

ISSUED FOR PERMIT	08.11.2014
2 ADDENDUM #1	07.29.2014
1 ISSUED FOR BID	07.11.2014
NO	ISSUE DATE
Sheet Information	
Date	AUGUST 11, 2014
Job #	152168.010
Drawn	AB
Checked	Checker
Approved	Approver
Title	

INTERIOR
ELEVATIONS

Sheet
A10-01