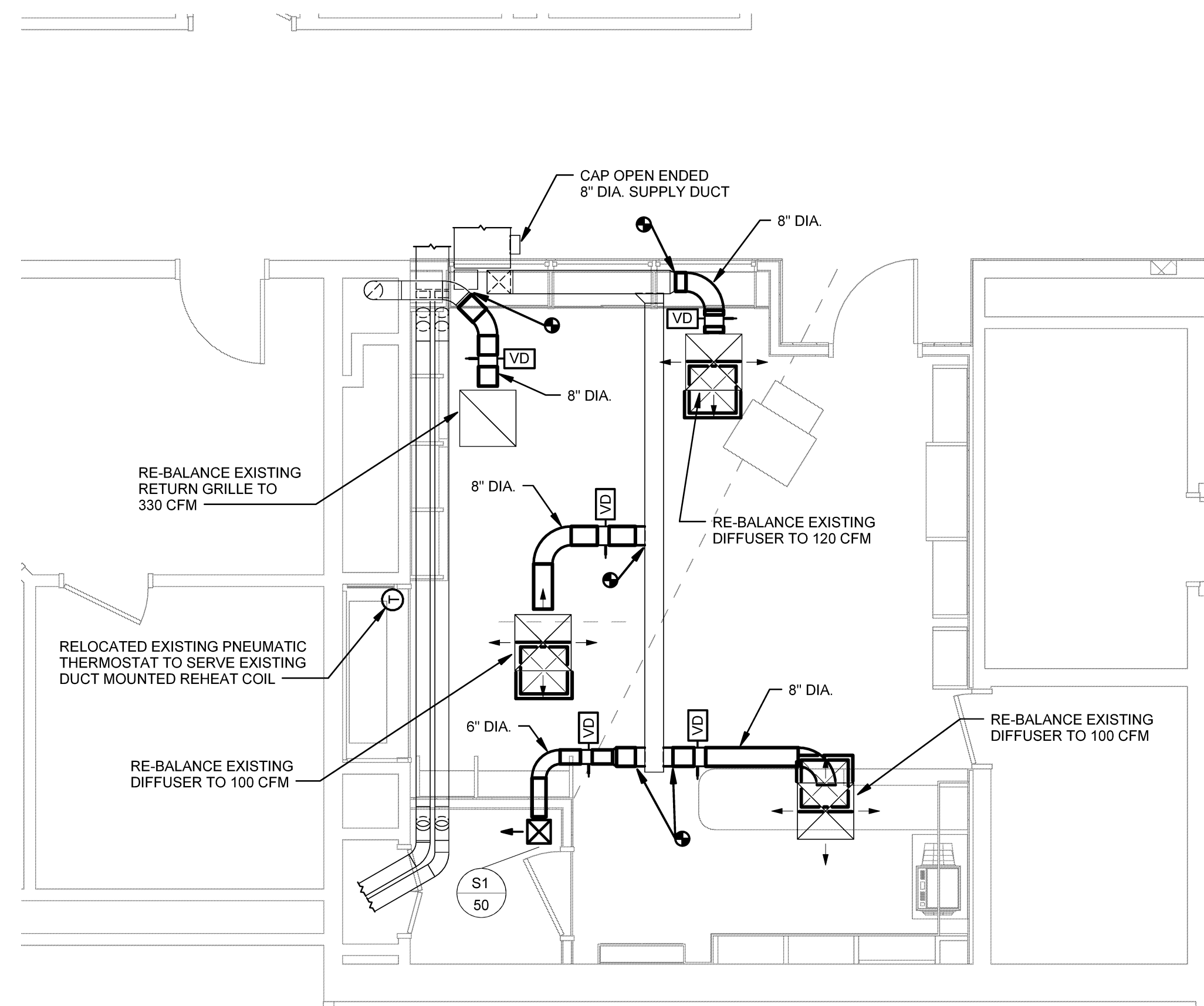
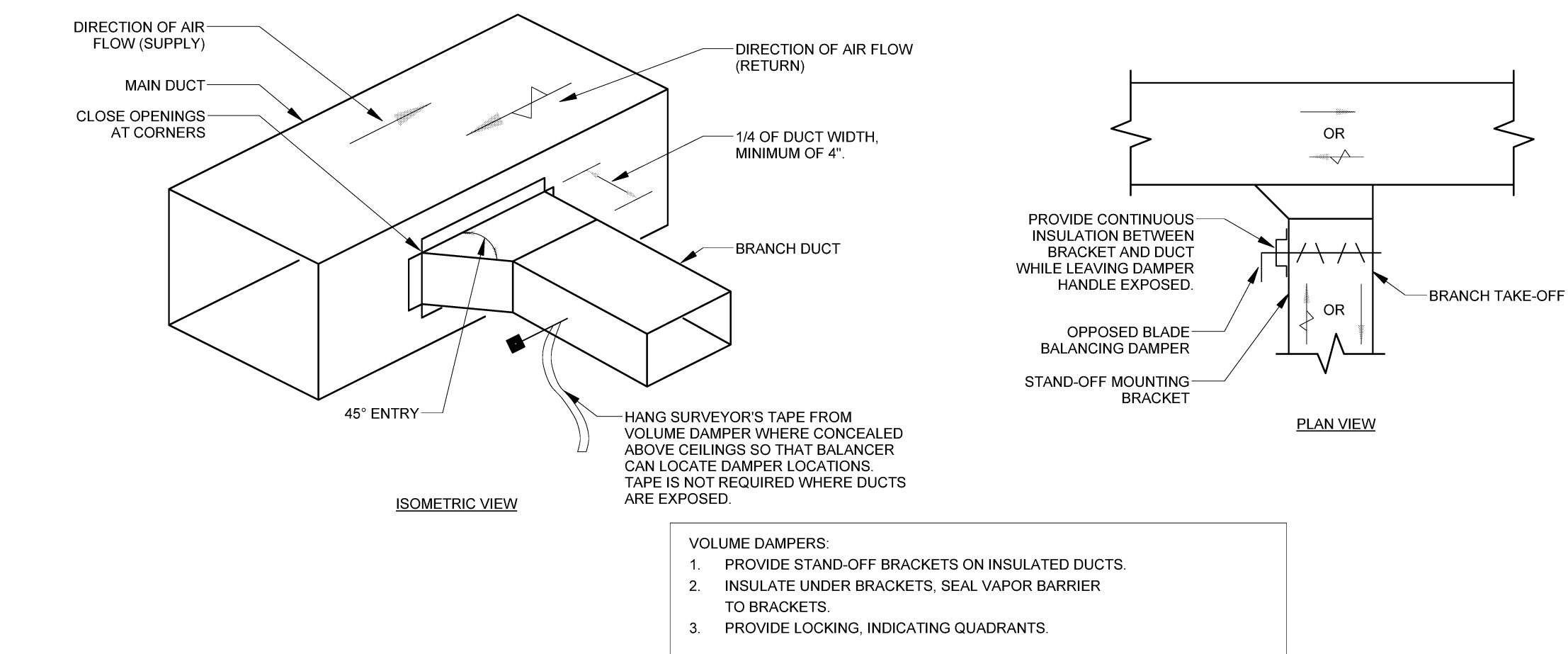


1 DEMOLITION DUCTWORK FIRST FLOOR
SCALE: 1/4" = 1'-0"

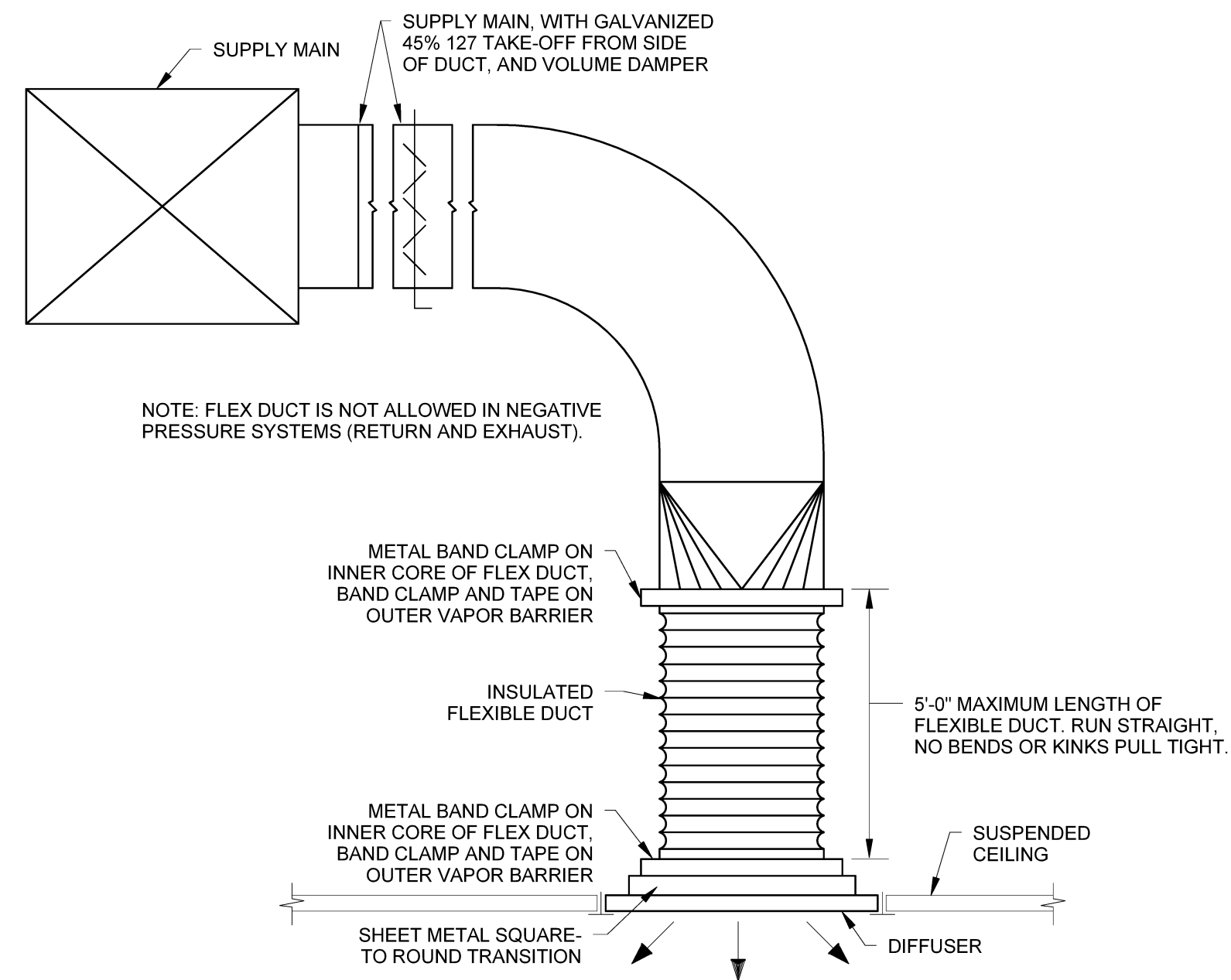


2 FIRST FLOOR DUCTWORK
SCALE: 1/4" = 1'-0"

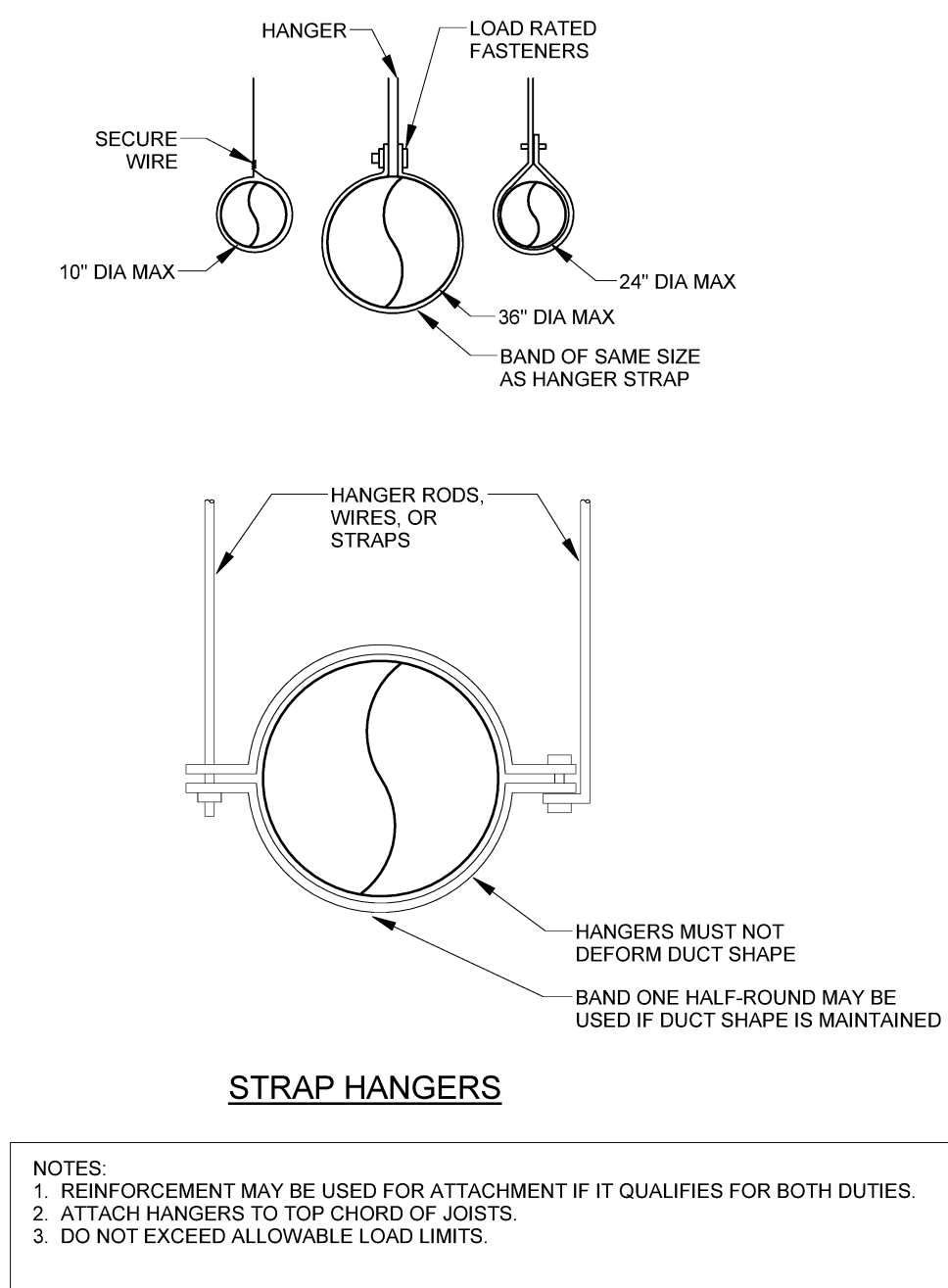
- GENERAL NOTES**
- VISIT THE BUILDING SITE PRIOR TO BIDDING TO BECOME FAMILIAR WITH EXISTING CONDITIONS, AND TO TAKE MEASUREMENTS AS NECESSARY FOR COMPLETION OF THE WORK ASSOCIATED WITH THE DESIGN INTENT OF THE CONTRACT DOCUMENTS.
 - COORDINATE WORK OF MECHANICAL SUBCONTRACTOR WITH WORK OF OTHER TRADES. COORDINATE WORK OF MECHANICAL SUBCONTRACTOR WITH WORK OF OTHER TRADES.
 - DUCTWORK, PIPING AND EQUIPMENT ARE INDICATED DIAGRAMMATICALLY. FIELD-VERIFY LOCATIONS.
 - PRIOR TO FABRICATING DUCTWORK, COORDINATE WITH OTHER TRADES TO ENSURE THAT THE DUCTWORK CAN BE INSTALLED WITH THE INDICATED SIZES AND LOCATIONS. FIELD-VERIFY EXISTING DUCT SIZES AND CONDITIONS. SUBMIT ANY DISCREPANCIES OR PROPOSED CHANGES.
 - REFER TO ARCHITECTURAL REFLECTED CEILING PLAN FOR LOCATIONS OF CEILING DIFFUSERS AND REGISTERS. PROVIDE VOLUME DAMPERS SO THAT EVERY REGISTER, GRILLE AND DIFFUSER (SUPPLY AND RETURN) CAN BE INDIVIDUALLY BALANCED.
 - DUCTWORK AND FITTINGS SHALL BE GALVANIZED SHEET METAL OF GAUGE IN ACCORDANCE WITH SMACNA STANDARDS.
 - LOCATE VOLUME DAMPERS AS FAR AWAY FROM REGISTERS, GRILLES AND DIFFUSERS AS POSSIBLE TO MINIMIZE NOISE. LOCATE TO BE UNOBSTRUCTED AND EASILY ACCESSIBLE FOR TESTING AND BALANCING.
 - DUCT ELBOWS SHALL BE LONG-RADIUS TYPE (THROAT RADIUS EQUAL TO OR GREATER THAN DUCT WIDTH IN THE PLANE OF THE TURN) WHEREVER SPACE ALLOWS. IF SPACE IS NOT ADEQUATE, PROVIDE MITERED ELBOWS WITH TURNING VANES.
 - FLEXIBLE DUCT LENGTHS SHALL NOT EXCEED 5'-0"
 - PAINT DUCTWORK VISIBLE THRU CEILING OPENINGS, DUCT OPENINGS, AND REGISTERS, GRILLES, AND DIFFUSERS WITH FLAT BLACK PAINT.
 - MOUNT THERMOSTAT AT 48 INCHES AFF TO TOP OF ITEM.
 - CONTRACTOR SHALL PROVIDE SPRINKLER SYSTEM DESIGN AND INSTALLATION TO PROTECT RENOVATED SPACES WITHIN PROJECT SCOPE IN ACCORDANCE WITH NFPA 13. SPRINKLER SYSTEM SHALL BE FED FROM EXISTING SPRINKLER SYSTEM WITHIN BUILDING. CONTRACTOR SHALL BE RESPONSIBLE FOR IDENTIFYING CONNECTION POINT FROM EXISTING SPRINKLER SYSTEM.



3 SIDE BRANCH TAKE-OFF
NO SCALE



4 FLEXIBLE CONNECTION
NO SCALE

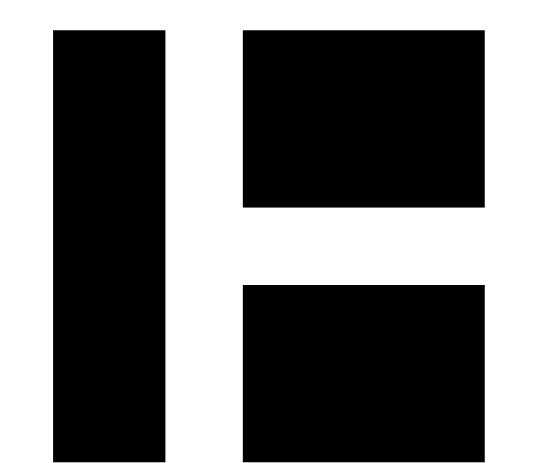


5 DUCT SUPPORT DETAIL
NO SCALE

- VOLUME DAMPERS:**
- PROVIDE STAND-OFF BRACKETS ON INSULATED DUCTS.
 - INSULATE UNDER BRACKETS, SEAL VAPOR BARRIER TO BRACKETS.
 - PROVIDE LOCKING, INDICATING QUADRANTS.

- NOTES:**
- REINFORCEMENT MAY BE USED FOR ATTACHMENT IF IT QUALIFIES FOR BOTH DUTIES.
 - ATTACH HANGERS TO TOP CHORD OF JOISTS.
 - DO NOT EXCEED ALLOWABLE LOAD LIMITS.

| REGISTERS GRILLES AND DIFFUSERS | | | | | | | | | | | | |
|---------------------------------|--------------|-------|------------------|-----------|-------------------|---------|------------|------------|---------------|------------------|-------------------|-------|
| TAG | MANUFACTURER | MODEL | TYPE | NECK SIZE | DIRECTION OF BLOW | MAX N.C | MAX S.P | THROW (FT) | MOUNTING TYPE | DAMPER | FINISH | NOTES |
| S1 | PRICE | 530 | CEILING DIFFUSER | 6 x 6 | SEE PLANS | 15 | 0.05 in-wg | 6 | SURFACE | OBD NOT REQUIRED | WHITE POWDER COAT | |



HARRIMAN

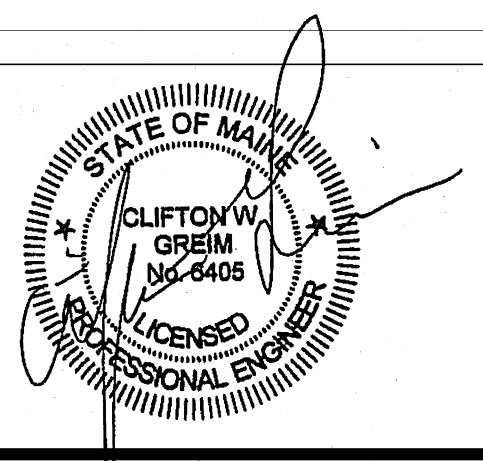
AUBURN PORTLAND MANCHESTER

MAINE MEDICAL CENTER BOUTIQUE RELOCATION

PORTLAND, MAINE

| | |
|----------------------|------------|
| Harriman Project No. | 14428 |
| Key Plan | Proj North |

| Mark | Date | Description |
|------|------------|-------------------------|
| 1 | 07-11-2014 | ISSUED FOR CONSTRUCTION |



| | |
|----------------|---------------------|
| Drawing Scales | As indicated |
| PA / PE: | CG |
| Drawn By: | JSL |
| © 2014 | Harriman Associates |

FIRST FLOOR MECHANICAL

M10.1