

HARRIMAN

AUBURN PORTLAND MANCHESTER

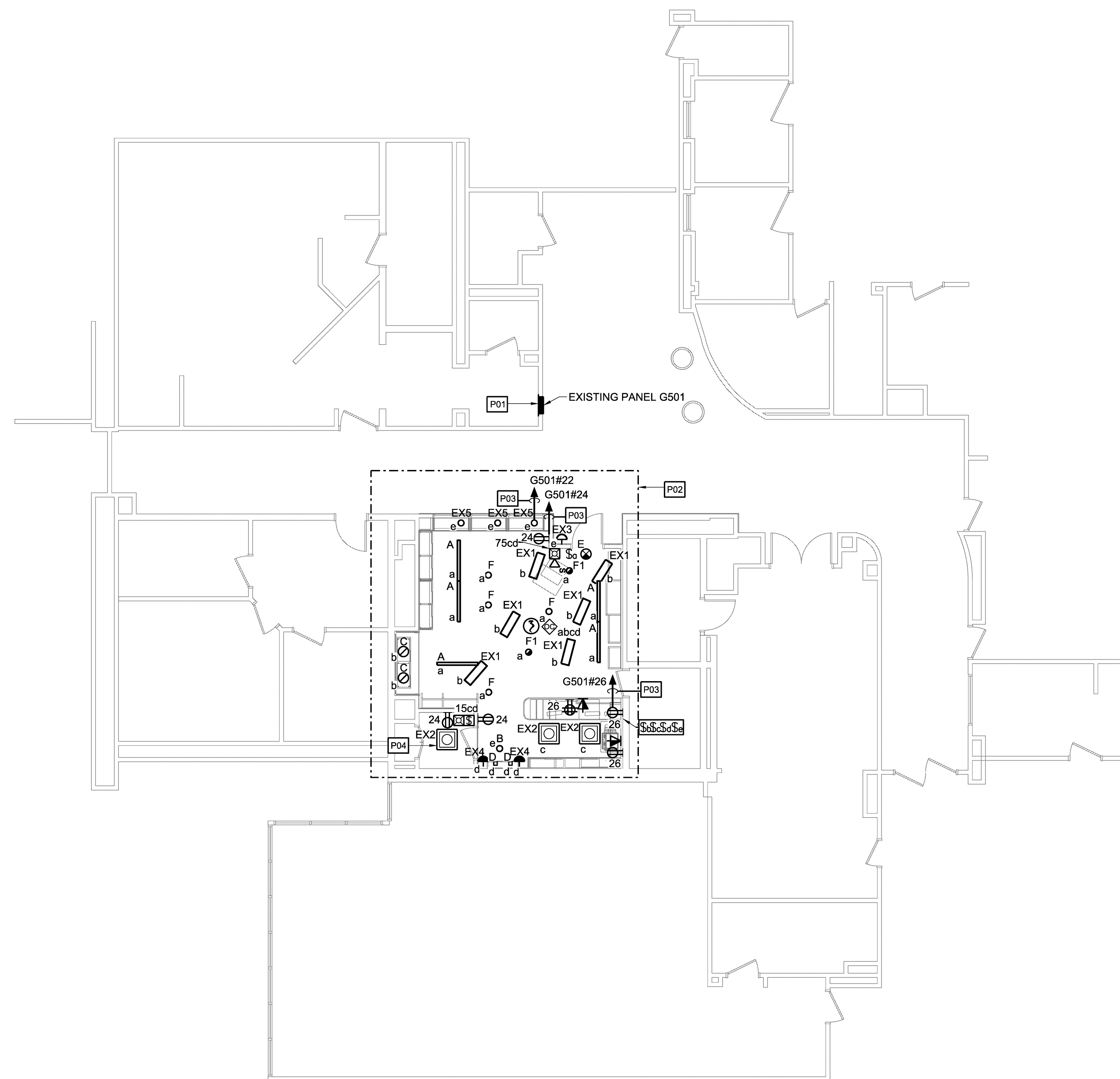
MAINE MEDICAL CENTER
BOUTIQUE RELOCATION

PORTLAND, MAINE

Harriman Project No. 14428

Key Plan

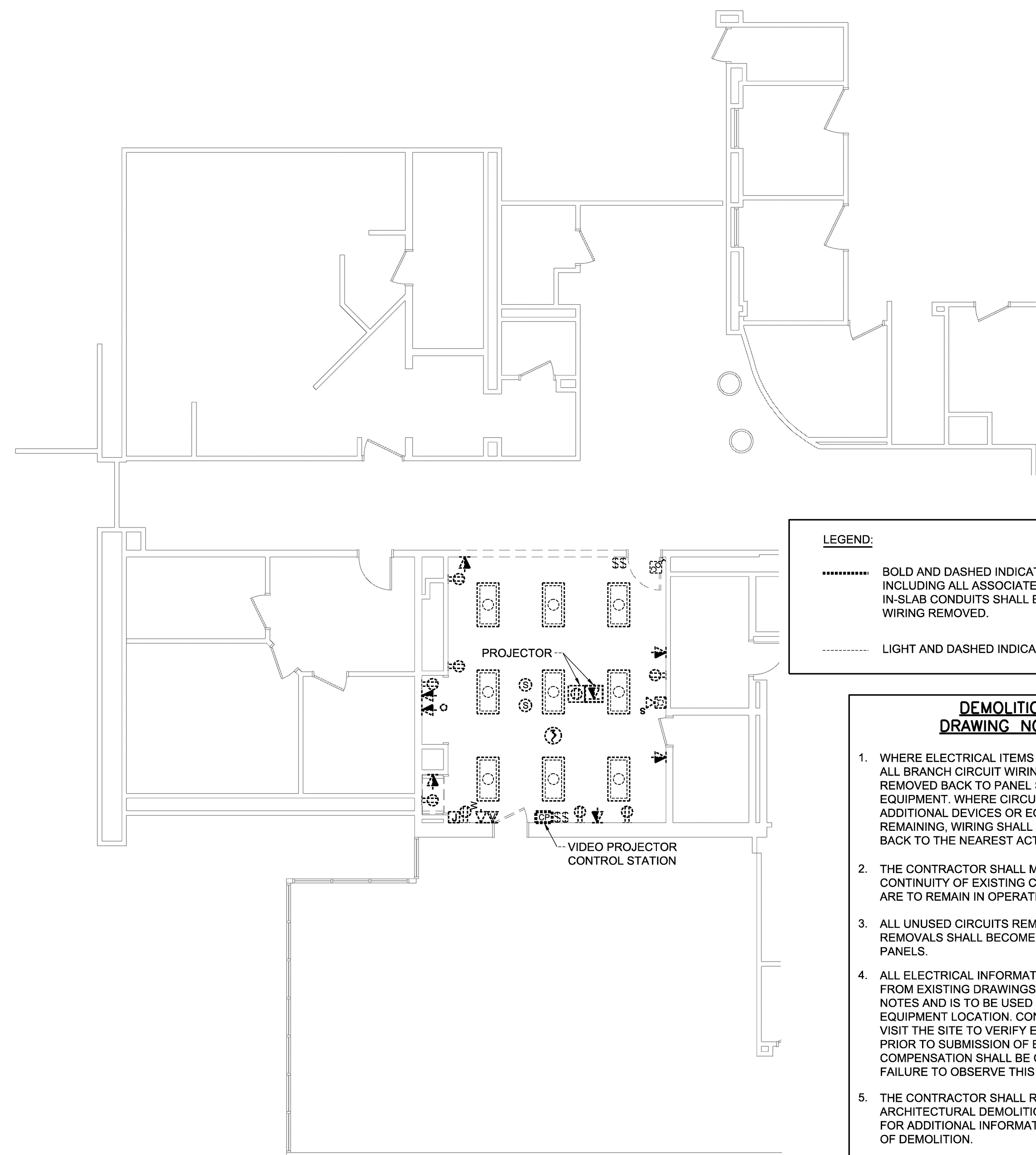
Proj North



KEY NOTES:

- P01** PROVIDE AND INSTALL (3) 20A, 1-POLE BREAKERS IN EXISTING SPACES 22, 24 & 26. NEW BREAKERS SHALL MATCH EXISTING TYPE INCLUDING AIC RATING.
- P02** CIRCUIT ALL LIGHT FIXTURES TO CIRCUIT G501#22.
- P03** 2#12+1#12G IN 3/4" C.
- P04** PROVIDE FIXTURE WITH EMERGENCY BATTERY BALLAST AND REMOTE TEST SWITCH.

2 NEW WORK PART PLAN
SCALE: 1/8" = 1'-0"



LEGEND:

- BOLD AND DASHED INDICATED ITEMS TO BE DEMOLISHED INCLUDING ALL ASSOCIATED WIRE AND CONDUIT. EXISTING IN-SLAB CONDUITS SHALL BE ABANDONED IN PLACE WITH WIRING REMOVED.
- LIGHT AND DASHED INDICATED ITEMS TO REMAIN.

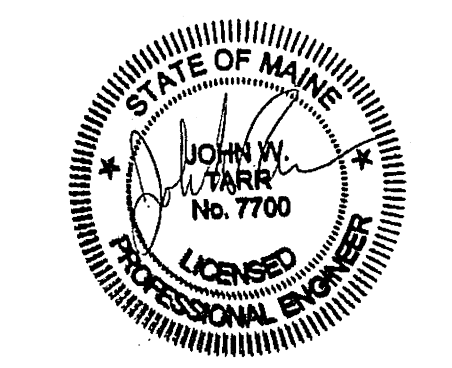
DEMOLITION DRAWING NOTES

1. WHERE ELECTRICAL ITEMS ARE REMOVED, ALL BRANCH CIRCUIT WIRING SHALL BE REMOVED BACK TO PANEL SERVING THE EQUIPMENT. WHERE CIRCUITS SERVE ADDITIONAL DEVICES OR EQUIPMENT REMAINING, WIRING SHALL BE REMOVED BACK TO THE NEAREST ACTIVE JUNCTION BOX.
2. THE CONTRACTOR SHALL MAINTAIN CONTINUITY OF EXISTING CIRCUITS THAT ARE TO REMAIN IN OPERATION.
3. ALL UNUSED CIRCUITS REMAINING AFTER REMOVALS SHALL BECOME SPARE IN PANELS.
4. ALL ELECTRICAL INFORMATION SHOWN IS FROM EXISTING DRAWINGS AND FIELD NOTES AND IS TO BE USED AS GUIDE FOR EQUIPMENT LOCATION. CONTRACTOR SHALL VISIT THE SITE TO VERIFY EXISTING CONDITIONS PRIOR TO SUBMISSION OF BID. NO ADDITIONAL COMPENSATION SHALL BE CONSIDERED FOR FAILURE TO OBSERVE THIS REQUIREMENT.
5. THE CONTRACTOR SHALL REFER TO ARCHITECTURAL DEMOLITION DRAWINGS FOR ADDITIONAL INFORMATION AND SCOPE OF DEMOLITION.
6. ALL MATERIALS AND EQUIPMENT REMOVALS SHALL BE DISPOSED OF AS DIRECTED BY THE OWNER OR THE ARCHITECT.
7. THE CONTRACTOR SHALL DISCONNECT AND REMOVE ALL ELECTRICAL WIRING AND EQUIPMENT AS REQUIRED WITHIN ALL AREAS TO BE RENOVATED. THIS SHALL INCLUDE, BUT NOT BE LIMITED TO, FIXTURES, DEVICES, OUTLETS, SWITCHES, RECEPTACLES, STARTERS, DISCONNECTS, PANELS, FEEDERS, ETC.
8. UNLESS OTHERWISE NOTED, EXISTING DEVICES TO BE REMOVED ARE SHOWN BOLD ON DEMOLITION PLANS.
9. ALL DEVICES SHOWN ARE BASED ON EXISTING DRAWINGS, FIELD NOTES AND SHALL ASSIST CONTRACTOR FOR ESTIMATING PURPOSES ONLY.
10. ELECTRICAL CONTRACTOR SHALL MAINTAIN THE INTEGRITY OF ALL EXISTING FEED-THROUGH CIRCUITS. WHERE ELECTRICAL DEVICES HAVE BEEN REMOVED FROM MIDPOINT OF CIRCUIT, NEW WIRE SHALL BE PULLED AS REQUIRED.

1 DEMOLITION PART PLAN
SCALE: 1/8" = 1'-0"

Issues and Revisions

Mark	Date	Description
--	07-11-2014	ISSUED FOR CONSTRUCTION



Drawing Scales	0 4' 8' 12'
1/8" = 1'-0"	

PA / PE: JWT	© 2014
Drawn By: APG	Harriman Associates

ELECTRICAL
DEMOLITION & NEW WORK
PART PLANS

E10.1