

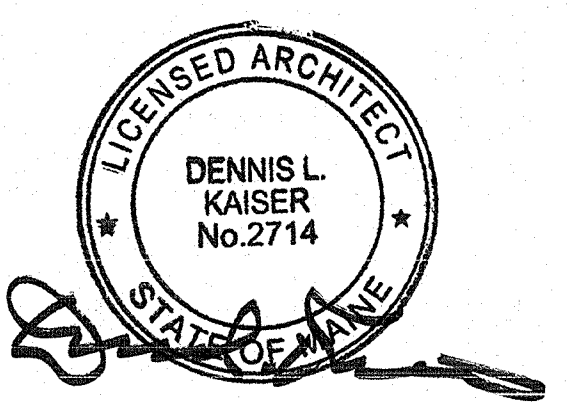


- GENERAL NOTES**
- NEW CONSTRUCTION REFLECTED CEILING:**
1. NEW 2X2 WASHABLE ACT CEILING TO MATCH HOSPITAL STANDARDS.
  2. NEW 2X2 ACT CEILING TO MATCH HOSPITAL STANDARDS.
  3. NEW 2X2 GASKETED WATER RESISTANT LIGHT FIXTURES TO MATCH HOSPITAL STANDARDS.
  4. NEW 2X2 LIGHT FIXTURES TO MATCH HOSPITAL STANDARDS.
  5. NEW EXHAUST DUCT / REGISTER- REFER TO HVAC NARRATIVE
  6. NEW SUPPLY DUCT / REGISTER- REFER TO HVAC NARRATIVE
  7. NEW / REWORK SPRINKLER HEADS TO COVER AREA.

**CSD  
RENOVATION**  
22 Bramhall Street, Portland,  
Maine 04102

- MEP ENGINEER  
**AKF ENGINEERS**  
41 Farnsworth Street, 3rd Floor  
Boston, MA 02210  
1517.737.1111  
1517.737.4511
- STRUCTURAL ENGINEER  
**SIMPSON GUMPERTZ &  
HEGER**  
41 Seyon Street, Building 1, Suite 500  
Walham, MA 02463  
1.781.507.8000  
1.781.507.8009
- CIVIL ENGINEER / LANDSCAPE ARCHITECT  
**SEBAGO TECHNICS**  
1 Chabot Street, PO Box 1339  
Westbrook, ME 04098  
1.207.856.0277  
1.207.856.2206
- COST ESTIMATOR  
**DG JONES & PARTNERS**  
3 Baldwin Green Common, Suite 202  
Woburn, MA 01801  
1.781.832.3131  
1.781.832.3199
- CODE CONSULTANT  
**R.W. SULLIVAN  
ENGINEERING**  
529 Main Street, Suite 203  
Boston, MA 02129  
1517.523.8227  
1517.523.8016

**ISSUED FOR  
PRICING**



**Revisions**

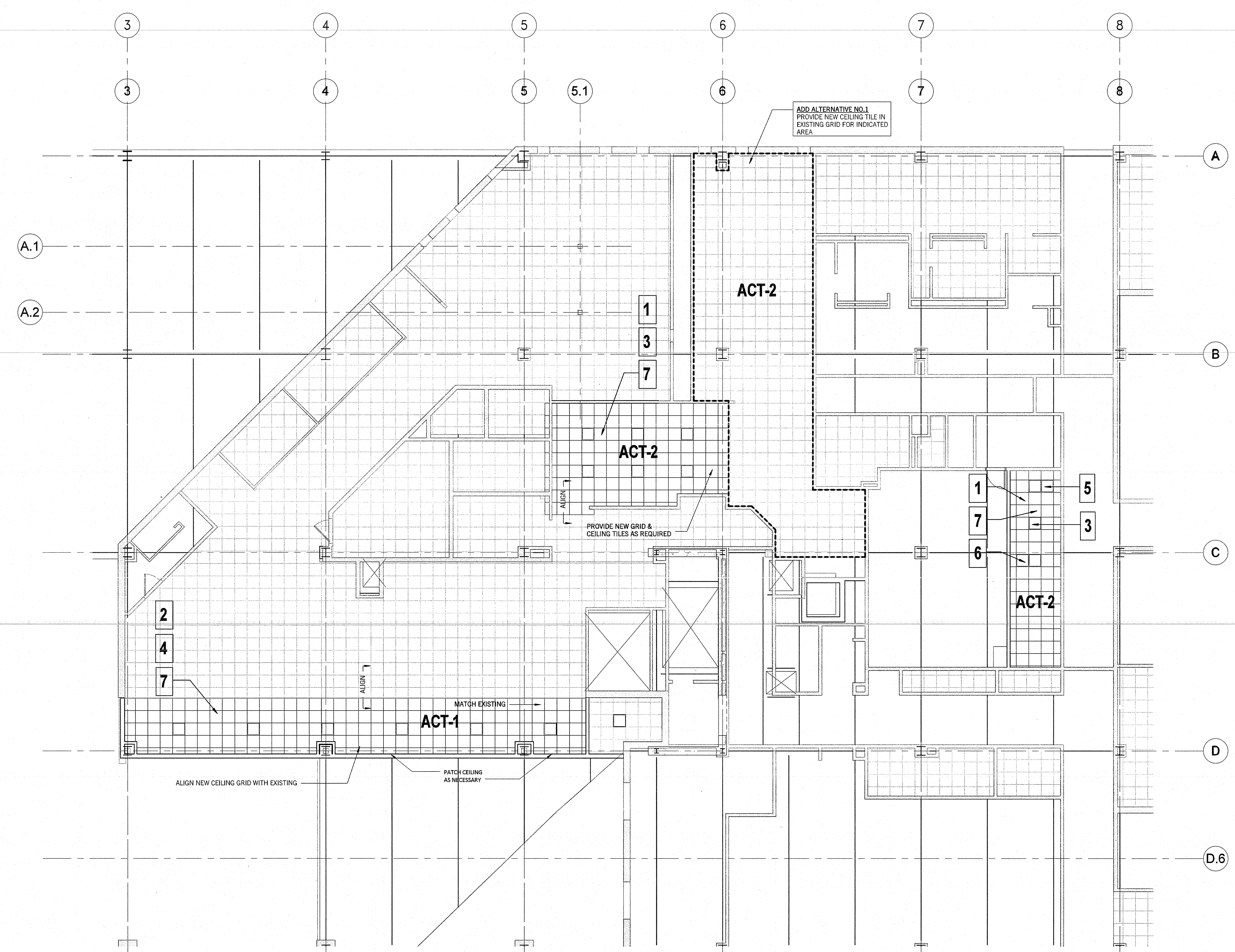
NO	ISSUE	DATE
1	ISSUED FOR PERMIT	04.24.14
	ISSUE	DATE

**Sheet Information**

Date: MARCH 07, 2014  
Job Number: 152168.002  
Drawn: Author  
Checked: Checker  
Approved: Approver

**SUB BASEMENT  
BEAN REFLECTED  
CEILING PLAN**

Sheet  
**A05-01**



**3 REFLECTED CEILING PLAN - BEAN SB**  
1/8" = 1'-0"