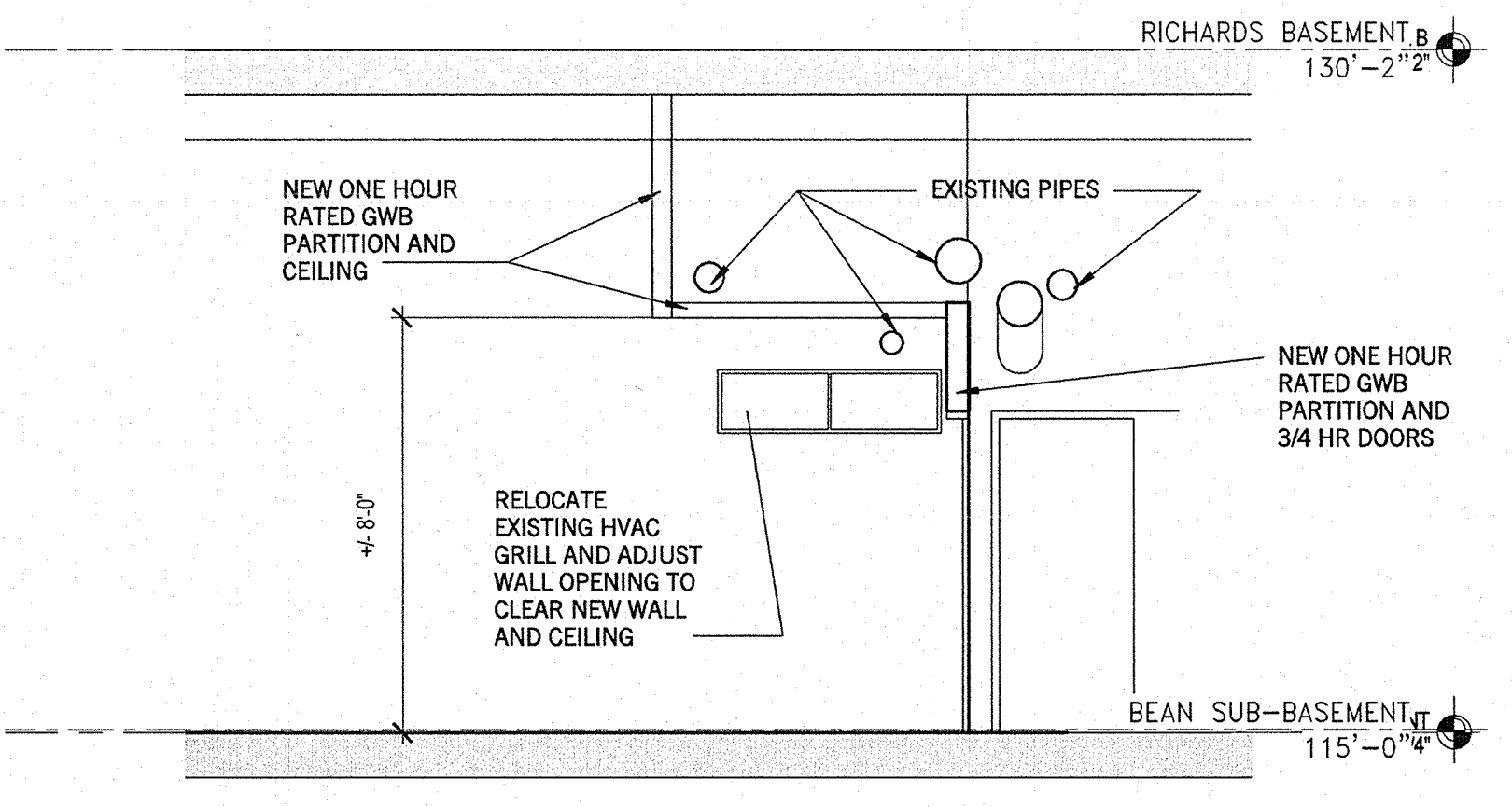
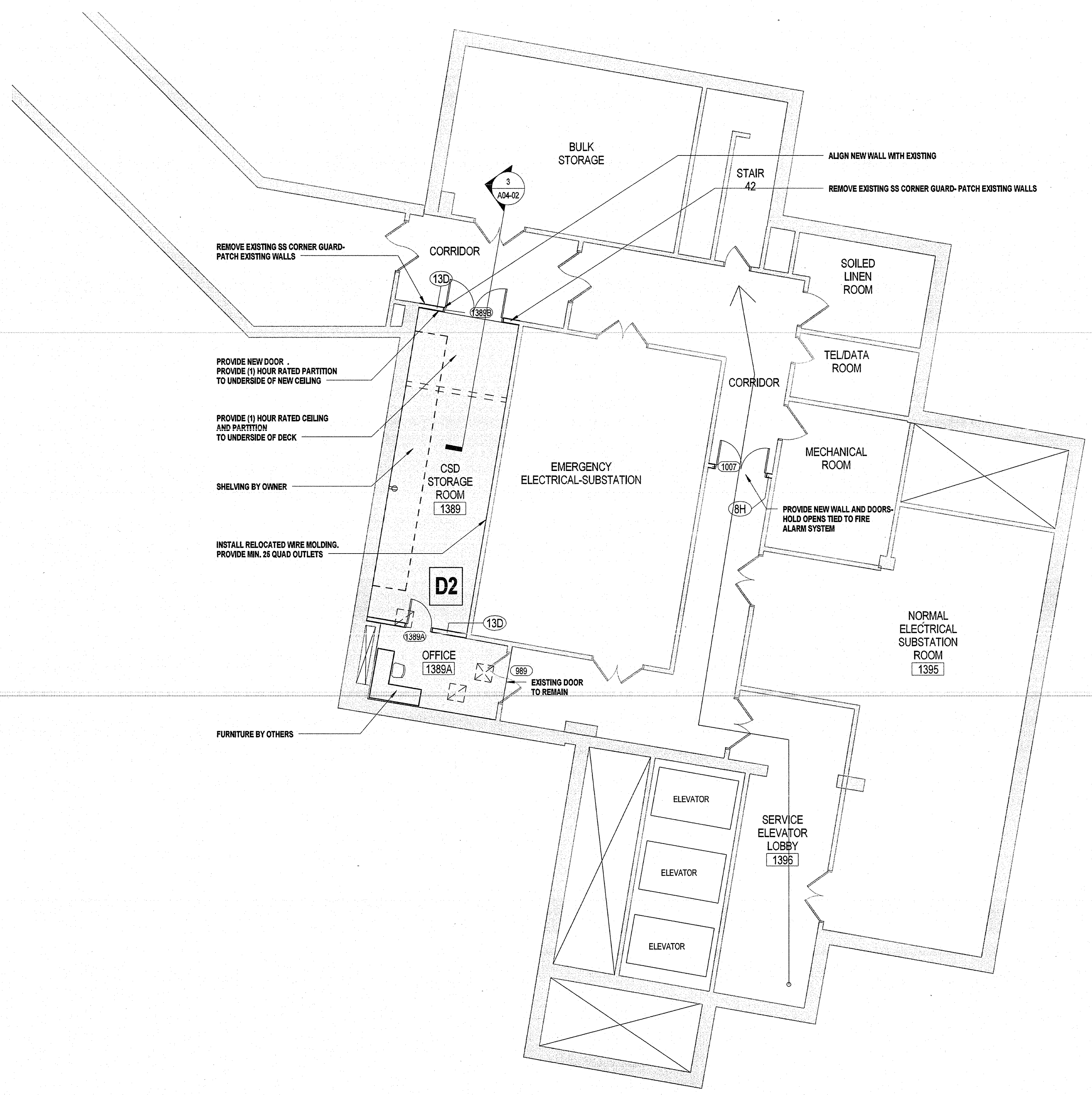
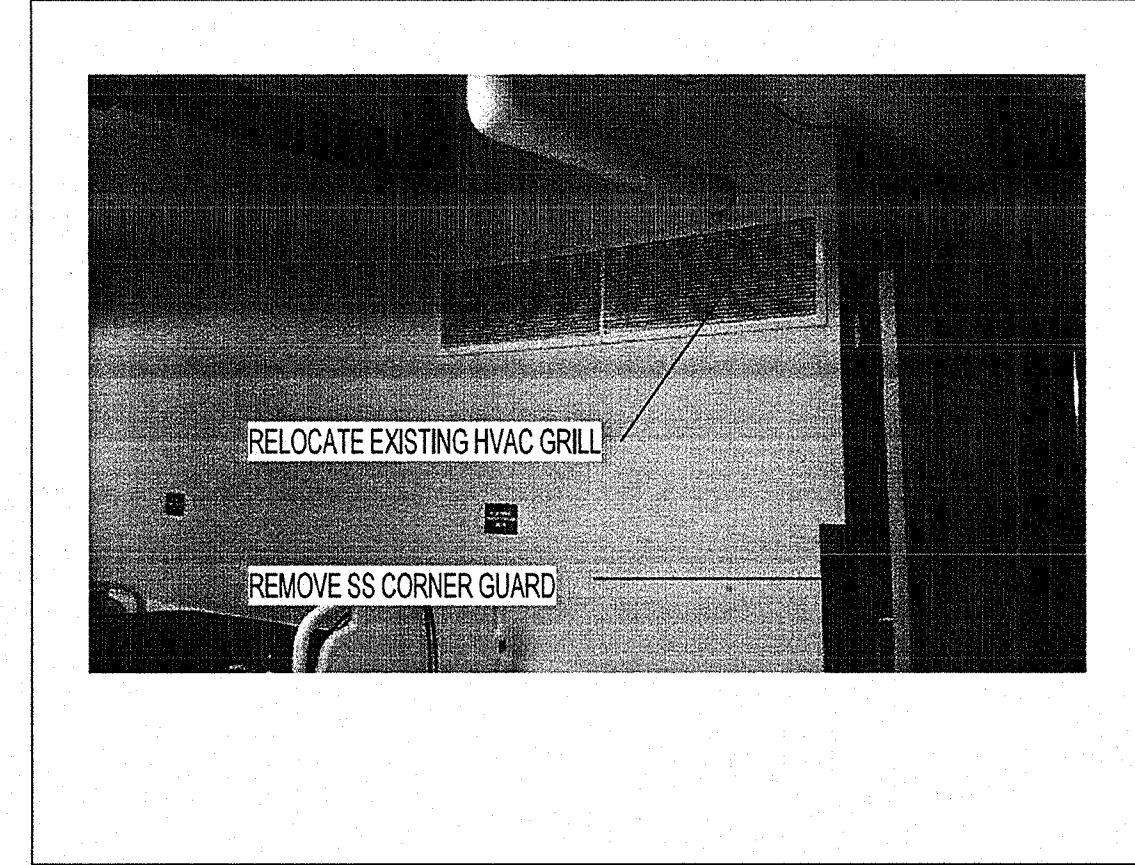


- GENERAL NOTES**
- DEMOLITION:**
 - DISCONNECT DOOR FROM FIRE ALARM.
 - REMOVE STAINLESS STEEL CORNER GUARDS-SEE PLAN
 - RELOCATE EXISTING GRILL TO ACCOMMODATE NEW WALL-SEE ELEVATION
 - REMOVE ANY CONFLICTING EGRESS SIGNS
 - NEW CONSTRUCTION PLAN:**
 - NEW ONE HOUR FIRE RATED GYPSUM WALL BOARD/METAL STUD WALL TO ALIGN WITH EXISTING WALL-PART WALL TO MATCH EXISTING BASE TO MATCH EXISTING
 - NEW FLUSH 3/4 HR FIRE RATED DOORS WITH LOCKABLE HARDWARE-SEE HOSPITAL FOR HARDWARE TYPE AND KEYING
 - NEW FLOORING IF NECESSARY TO MATCH EXISTING
 - PATCH WALL AT REMOVED STAINLESS STEEL CORNER GUARDS
 - COORDINATE ALL LOW-VOLTAGE REQUIREMENTS WITH OWNER
 - NEW CONSTRUCTION REFLECTED CEILING:**
 - NEW 2X2 ACT CEILING TO MATCH HOSPITAL STANDARDS.
 - NEW 2X2 FIXTURES TO MATCH HOSPITAL STANDARDS.
 - NEW / REWORK SPRINKLER HEADS TO COVER AREA.

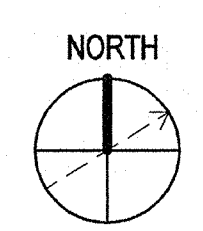


3 SECTION THRU STORAGE ENTRY WALL
1/4" = 1'-0"



2 EXISTING CONDITIONS AT CORRIDOR

1 EAST TOWER CORRIDOR-NEW WORK FLOOR PLAN
1/8" = 1'-0"



Revisions

NO	ISSUE	DATE
1	ISSUED FOR PERMIT	04.24.14

Sheet Information

Date: MARCH 07, 2014
 Job Number: 152168.002
 Drawn: Author
 Checked: Checker
 Approved: Approver

Title

**SUB BASEMENT
NEW WORK PLAN**