

**CSD
RENOVATION**
22 Bramhall Street, Portland,
Maine 04102

MEP ENGINEER
AKF ENGINEERS

41 Farnsworth Street, 3rd Floor
Boston, MA 02210
1817.737.1111
1817.737.4311

STRUCTURAL ENGINEER
SIMPSON GUMPERTZ &
HEGER

41 Seyon Street, Building 1, Suite 500
Waltham, MA 02453
1781.507.9000
1781.507.9000

CIVIL ENGINEER / LANDSCAPE ARCHITECT
SEBAGO TECHNICS

1 Chabot Street, PO Box 1339
Westbrook, ME 04098
1207.856.0277
1207.856.2206

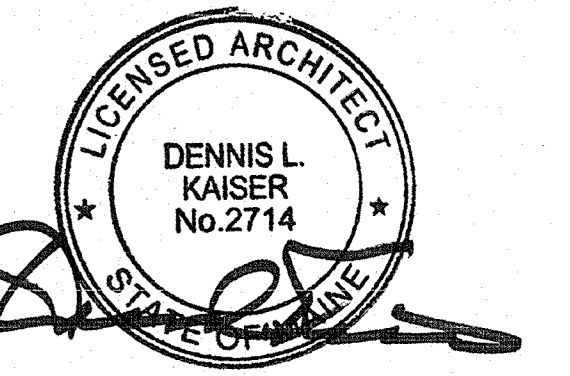
COST ESTIMATOR
DG JONES & PARTNERS

3 Baldwin Green Common, Suite 202
Woburn, MA 01801
1781.532.3131
1781.532.3199

CODE CONSULTANT
R.W. SULLIVAN
ENGINEERING

529 Main Street, Suite 203
Boston, MA 02129
1817.523.8227
1817.523.8016

**ISSUED FOR
PRICING**



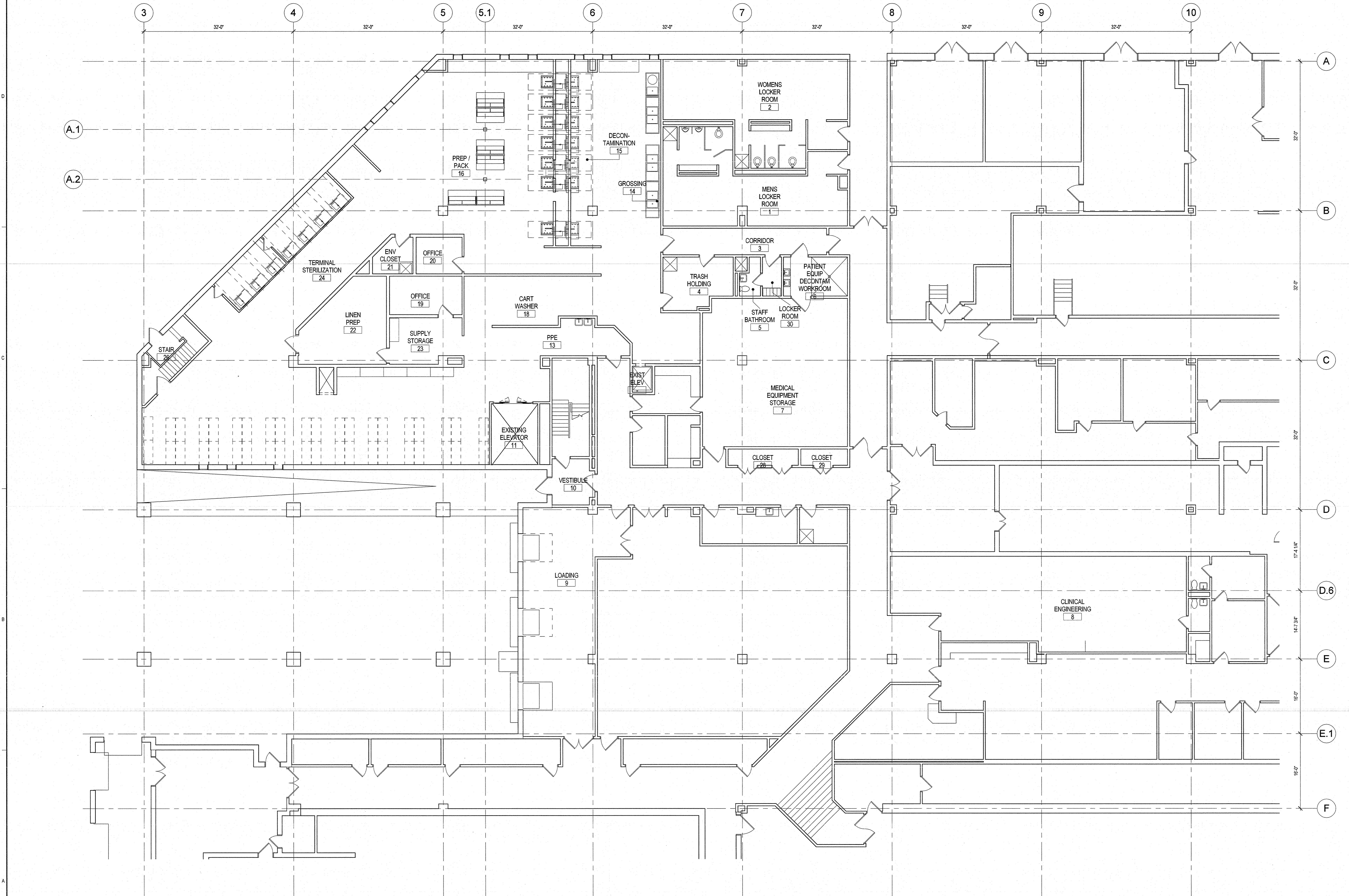
Revisions

| NO | ISSUED FOR PERMIT | DATE |
|----|-------------------|----------|
| 1 | ISSUED FOR PERMIT | 04.24.14 |
| | ISSUE | DATE |

Sheet Information
 Date: MARCH 07, 2014
 Job Number: 152168.002
 Drawn: Author
 Checked: Checker
 Approved: Approver

**SUB-BASEMENT
EXISTING FLOOR
PLAN**

Sheet
A00-20



1 BEAN LEVEL SB - EXISTING CONDITIONS
1/8" = 1'-0"