

**CSD  
RENOVATION**  
22 Bramhall Street, Portland,  
Maine 04102

MEP ENGINEER  
**AKF ENGINEERS**

41 Farnsworth Street, 3rd Floor  
Boston, MA 02210  
1817.737.1111  
1817.737.4311

STRUCTURAL ENGINEER  
**SIMPSON GUMPERTZ &  
HEGER**

41 Seyon Street, Building 1, Suite 500  
Waltham, MA 02453  
1781.507.5000  
1781.507.5009

CIVIL ENGINEER / LANDSCAPE ARCHITECT  
**SEBAGO TECHNICS**

1 Chabot Street, PO Box 1339  
Westbrook, ME 04090  
1207.856.0277  
1207.856.2206

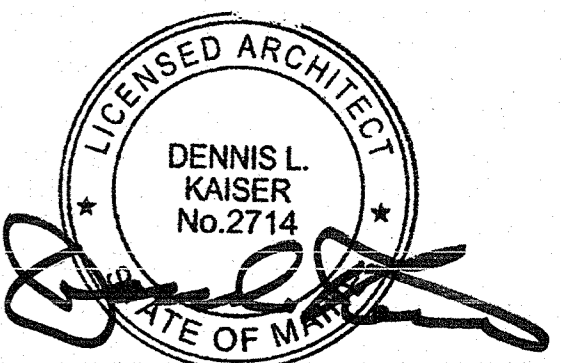
COST ESTIMATOR  
**DG JONES & PARTNERS**

3 Baldwin Green Common, Suite 202  
Woburn, MA 01801  
1781.532.3191  
1781.532.3199

CODE CONSULTANT  
**R.W. SULLIVAN  
ENGINEERING**

529 Main Street, Suite 203  
Boston, MA 02129  
1817.523.5227  
1817.523.8016

**ISSUED FOR  
PRICING**



Revisions

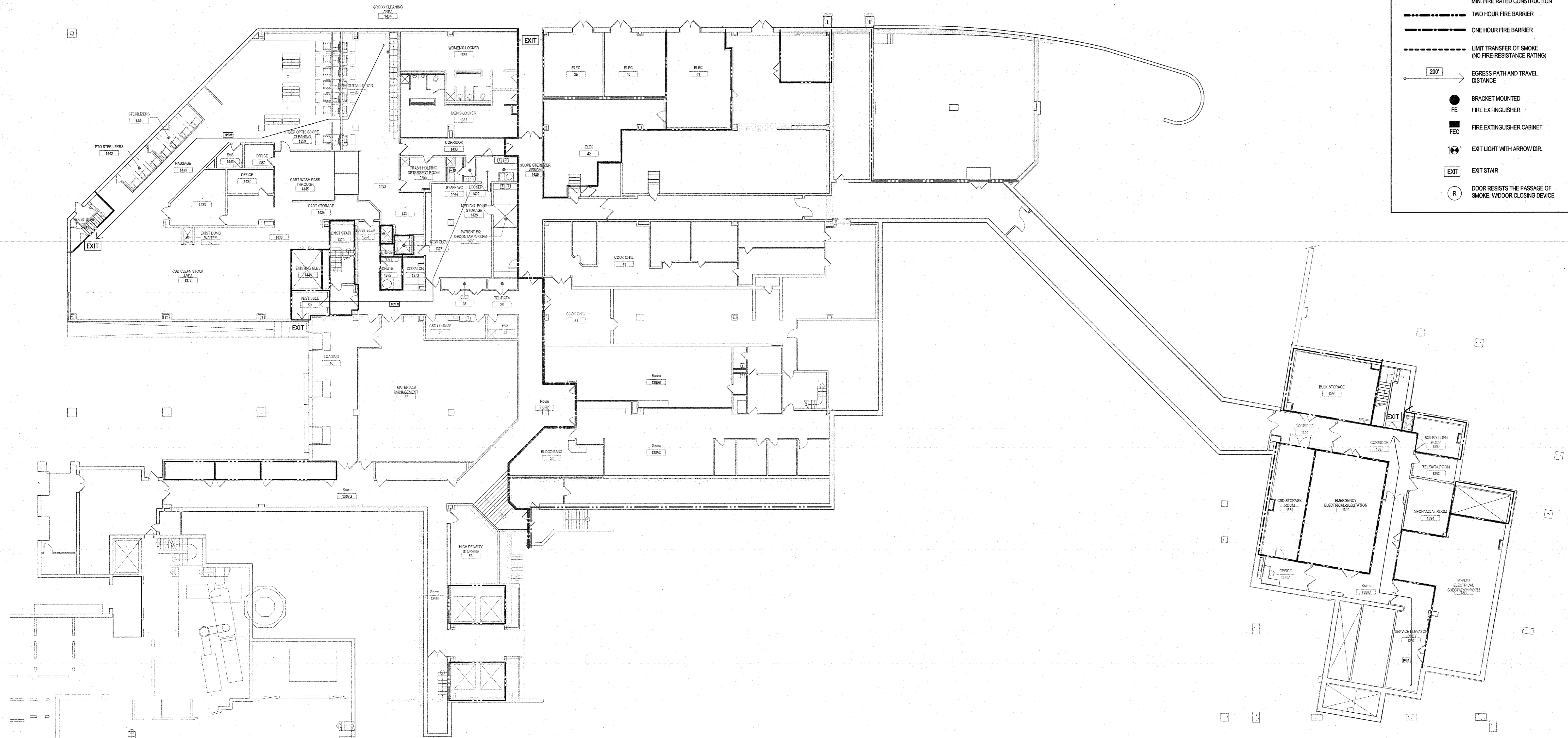
1	ISSUED FOR PERMIT	04.24.14
NO	ISSUE	DATE
<b>Sheet Information</b>		
Date	MARCH 07, 2014	
Job Number	152168.002	
Drawn	Author	
Checked	Checker	
Approved	Approver	

**SUB BASEMENT  
CODE  
COMPLIANCE  
PLAN W/ CODE  
REVIEW**

Sheet  
**A00-10**

**LEGEND**

- SMOKE BARRIER WITH TWO HOUR MIN. FIRE RATED CONSTRUCTION
- SMOKE BARRIER WITH ONE HOUR MIN. FIRE RATED CONSTRUCTION
- TWO HOUR FIRE BARRIER
- ONE HOUR FIRE BARRIER
- LIMIT TRANSFER OF SMOKE (NO FIRE-RESISTANCE RATING)
- EGRESS PATH AND TRAVEL DISTANCE
- BRACKET MOUNTED FIRE EXTINGUISHER
- FIRE EXTINGUISHER CABINET
- EXIT LIGHT WITH ARROW DIR.
- EXIT STAIR
- DOOR RESISTS THE PASSAGE OF SMOKE, W/DOOR CLOSING DEVICE



Code Type	Applicable Code (Model Code Basis)
Building	2009 International Building Code
Fire Prevention	NFPA 101: Life Safety Code, 2009 Edition Chapter 18: New Health Care Occupancies Chapter 19: Existing Health Care Occupancies Portland Fire Prevention Fire Code 2006 NFPA 1
Accessibility	Maine Human Rights Commission
Electrical	2011 National Electrical Code
Mechanical	ASHRAE 62.1 - 2007 ASHRAE 62.2 - 2007
Plumbing	2009 Uniform Plumbing Code (with State Amendments)
Energy Conservation	2009 International Energy Conservation Code
Joint Commission	NFPA 101 Applicable Code Year: 2000 Edition

New Building Elements	Fire Resistance Rating (hrs)	Opening Protectives (hrs)
Structural Frame	2	-
Exterior Bearing Walls	2	-
Interior Bearing Walls	2	-
Exterior Non-Bearing Walls	Based on FSD	-
Interior Non-Bearing Walls	0	-
Floor Construction	2A	-
Roof Construction	1	-
Exit Access Corridors (IBC 407.2 & 407.3) (NFPA 101)	Smoke Resistant	Positive-latching
Stair Shafts (IBC 1022.1) (NFPA 101)	2	1 1/2
Other Shafts (IBC 708.4) (NFPA 101)	2	1 1/2
Trash Room/Storage > than 100 SF in Area	1	.75
Trash Room/Storage > than 50 SF in Area	Smoke Resistant	Self Closing
Trash Room/Storage that contain > 64 Gal. storage	1	Self Closing
Rooms With Equipment Greater than 400,000 Btu/h Input Capacity (IBC Table 508.2.5) (NFPA 101)	1	.75

IBC Construction Type IB - NFPA Type II (222)		
Building Component	Wall & Ceilings (IBC 803.9)	Floors (IBC 804.4.1)
Exit Enclosures and Passageways	Class B	Class II
Corridors	Class B	Class II
Rooms & Enclosed Spaces	Class B	DOC FF-1

Floor	Occupant Load	Number of Exits		Exit Capacity (persons)
		Required	Provided	
2	459	2	4	660

Required Fire Protection Systems:  
 NFPA 13 sprinkler system (2009 IBC 407.5)  
 Fire alarm system (2009 IBC 407.6)  
 Standpipe system (2009 IBC 905.3.1)  
 Fire extinguishers (2009 IBC 906.1)

Use	Occupant Load Level SB		
	Floor Area	Floor Area Per Occupant (SF / OCC)	Occupant Load
CSD Renovation			
Institutional I-2	19,248 SF	100	192.4
Business B	4991 SF	100	499.1

