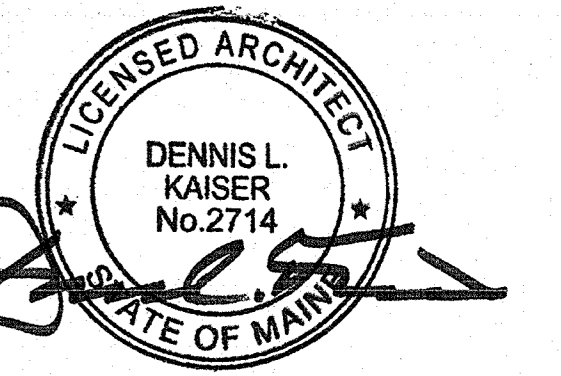
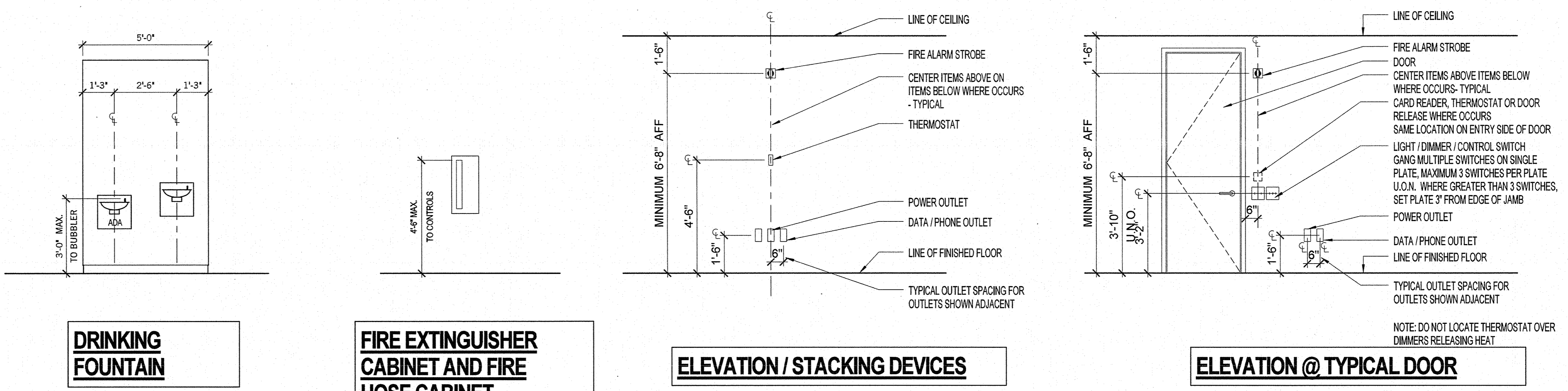
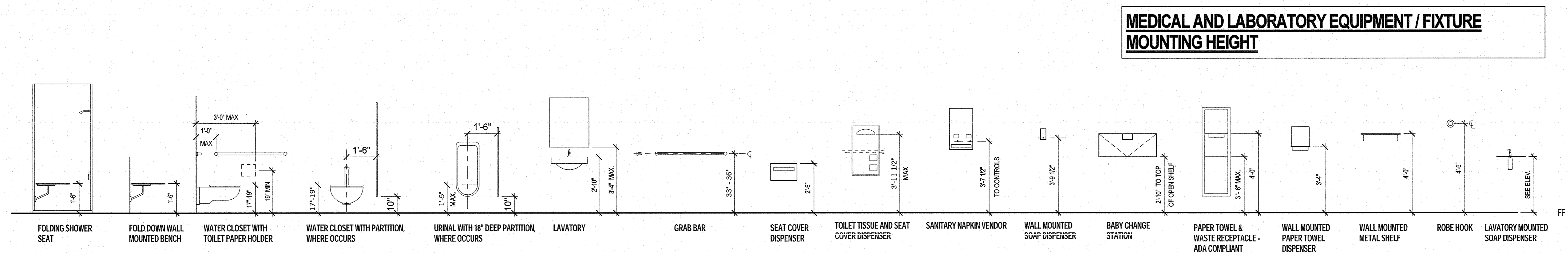
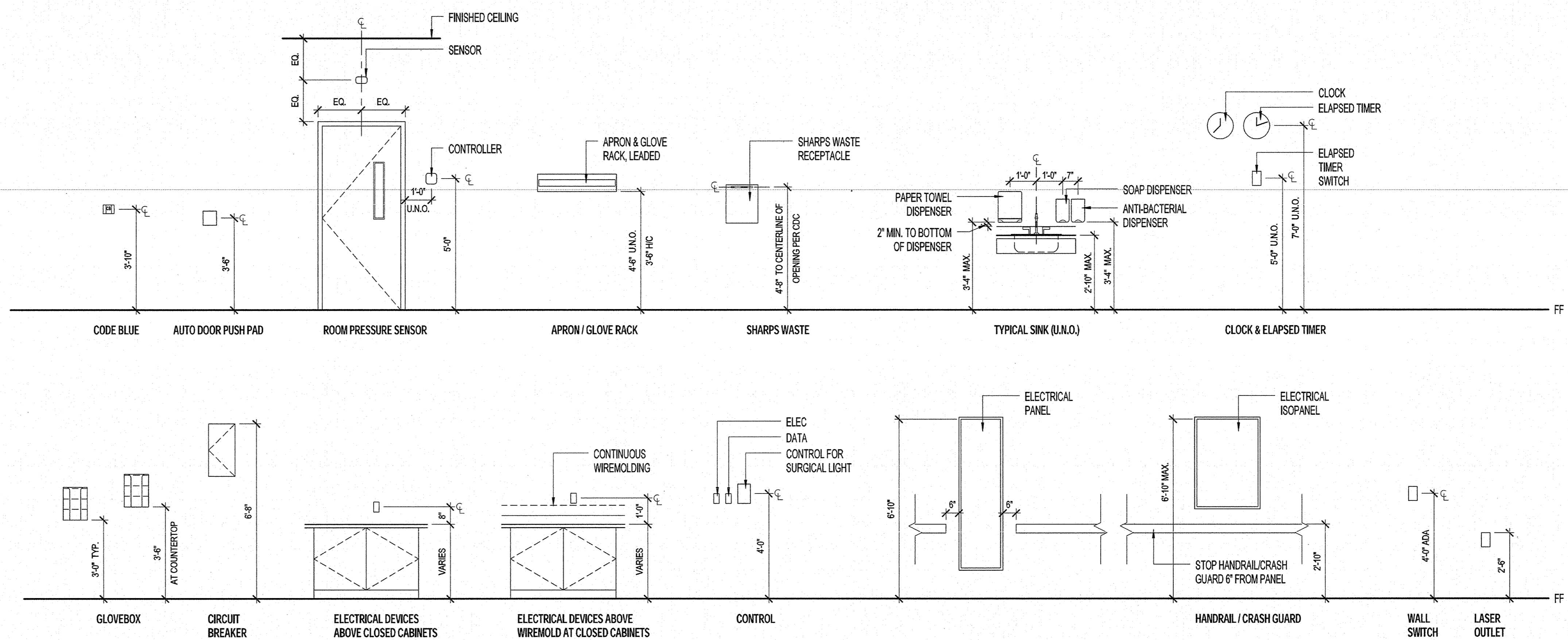


THE DIAGRAMS ARE GUIDELINES FOR THE PROPER MOUNTING HEIGHTS OF EQUIPMENT AND PLUMBING FIXTURES. THE ITEMS SHOWN ARE LOCATED FOR ACCESSIBILITY, SAFETY AND CONFORMANCE WITH APPLICABLE CODES AND STANDARDS. IN NO CASE SHALL THIS INFORMATION SUPERSEDE REQUIREMENTS OF APPLICABLE CODES, STANDARDS OR AUTHORITIES, IF A CONFLICT IS FOUND.

- IF FIELD CONDITIONS CREATE CONFLICTS WITH THE REQUIRED MOUNTING HEIGHTS, NOTIFY ARCHITECT PRIOR TO INSTALLATION.
- ALL OUTLETS, CABINETS, SWITCHES, ALARMS AND SIGNALS NOT DIMENSIONED ON DRAWINGS SHALL BE COORDINATED WITH ARCHITECT PRIOR TO INSTALLATION.
- ALL ITEMS SHALL ALIGN HORIZONTALLY AND VERTICALLY IF MORE THAN ONE ITEM IS LOCATED ON A WALL, U.N.O.
- THE DIAGRAMS ON THIS SHEET ARE TO ESTABLISH GUIDELINES FOR THE LOCATION OF DEVICES GENERALLY THROUGHOUT THE PROJECT. THESE DIMENSIONS SHALL BE TYPICAL UNLESS NOTED OTHERWISE ON DRAWINGS FOR SPECIFIC LOCATIONS.



Revisions

NO.	ISSUE	DATE
1	ISSUED FOR PERMIT	04.24.14

Sheet Information

Date: MARCH 07, 2014
Job Number: 152166.002
Drawn: Author
Checked: Checker
Approved: Approver

Title: **TYPICAL MOUNTING HEIGHTS**