

**Bean 2 Roof  
Addition**  
22 Bramhall Street, Portland,  
Maine 04102

MEP ENGINEER  
AKF ENGINEERS

41 Farnsworth Street, 3rd Floor  
Boston, MA 02210  
1 617.737.1111  
1 617.737.4311

STRUCTURAL ENGINEER  
SIMPSON GUMPERTZ &  
HEIGER

41 Seyon Street, Building 1, Suite 500  
Waltham, MA 02453  
1 781.907.9000  
1 781.907.9009

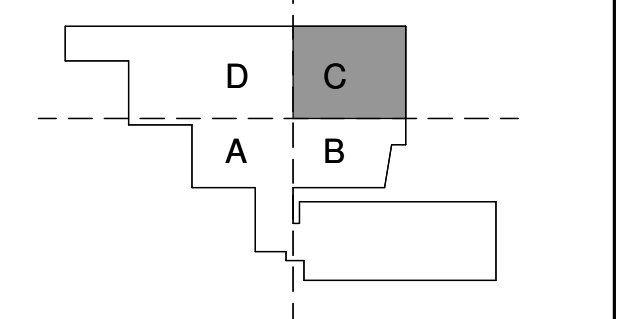
MEDICAL EQUIPMENT PLANNERS  
RTL ASSOCIATES INC.

1717 PACIFIC AVENUE  
DALLAS, TX 75201  
1 214.468.7600  
1 214.468.7601

COST ESTIMATOR  
DG JONES & PARTNERS

3 Baldwin Green Common, Suite 202  
Woburn, MA 01801  
1 781.932.3131  
1 781.932.3199

**CONSTRUCTION  
DOCUMENTS**



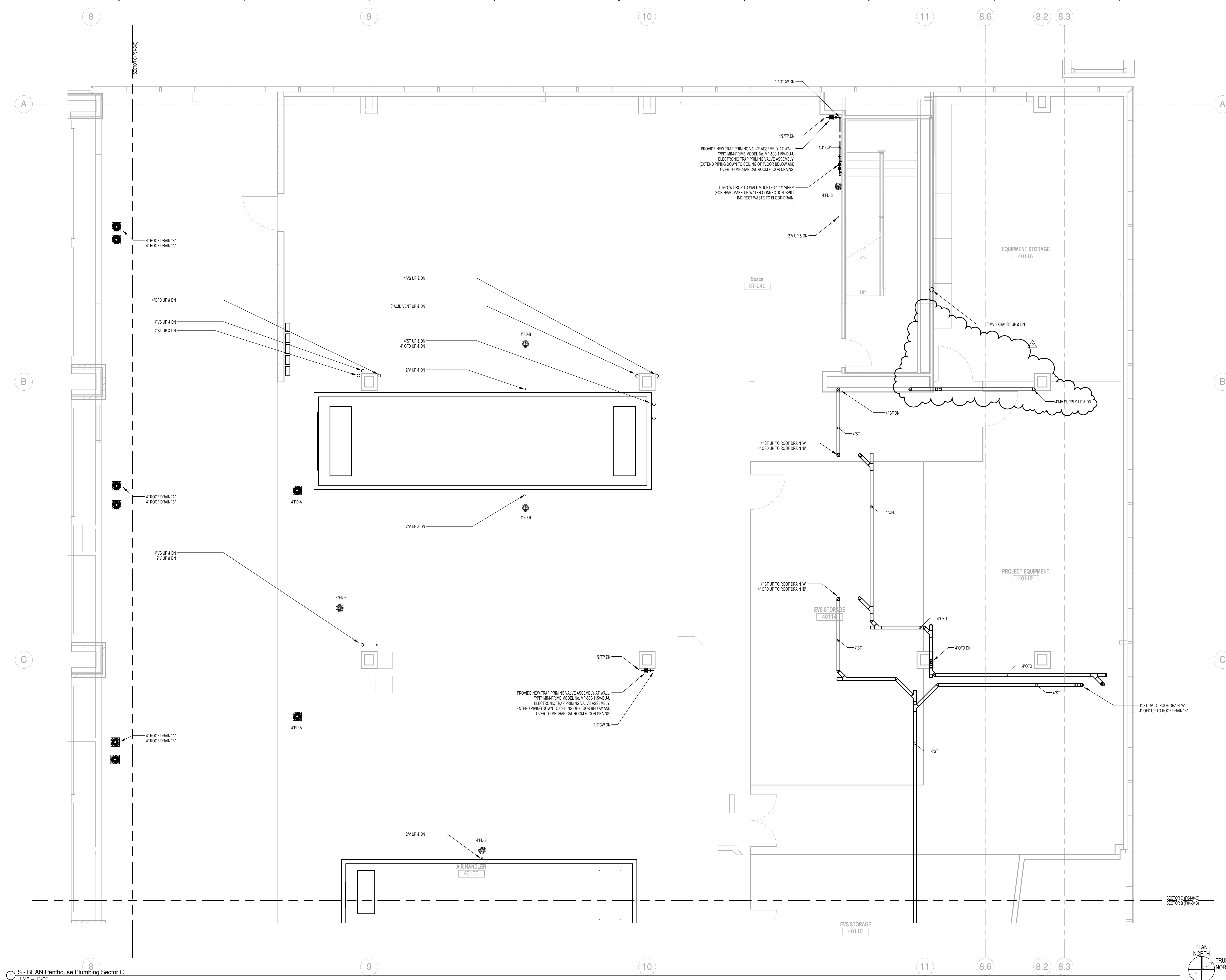
**Revisions**

NO	ISSUE	DATE
2	ASI #2	03-28-14
1	Issued for Permit	02-07-14
NO	ISSUE	DATE

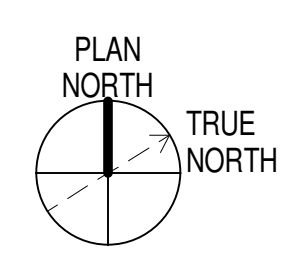
**Sheet Information**  
Date: JUNE 14, 2013  
Job #: C140135461 (MMC)/152168.000  
Drawn: NJP  
Checked: PJR  
Approved: PJR

**Title  
PLUMBING  
PENTHOUSE  
FLOOR PLAN -  
SECTOR C**

**Sheet  
P04-04C**



**S - BEAN Penthouse Plumbing Sector C**  
1/4" = 1'-0"



3/28/2014 2:20:47 PM  
C:\Revt\Local Files\B120229-MMC\_Bean2-MEP12-central\_plumbing.rvt