

**Bean 2 Roof  
Addition**  
22 Bramhall Street, Portland,  
Maine 04102

MEP ENGINEER  
AKF ENGINEERS

41 Farnsworth Street, 3rd Floor  
Boston, MA 02210  
617.737.1111  
617.737.4311

STRUCTURAL ENGINEER  
SIMPSON GUMPERTZ &  
HEGER

41 Seyon Street, Building 1, Suite 500  
Waltham, MA 02453  
1781.907.9000  
1781.907.9009

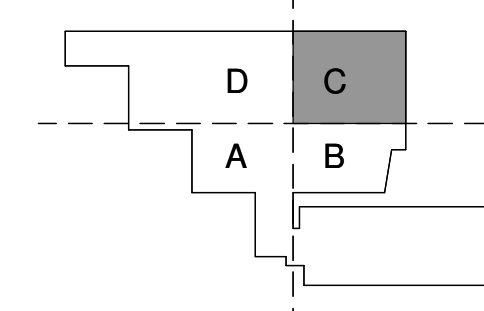
MEDICAL EQUIPMENT PLANNERS  
RTL ASSOCIATES INC.

1717 PACIFIC AVENUE  
DALLAS, TX 75201  
1214.468.7600  
1214.468.7601

COST ESTIMATOR  
DG JONES & PARTNERS

3 Baldwin Green Common, Suite 202  
Woburn, MA 01801  
1781.932.3131  
1781.932.3199

**CONSTRUCTION  
DOCUMENTS**



**Revisions**

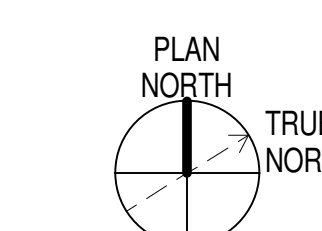
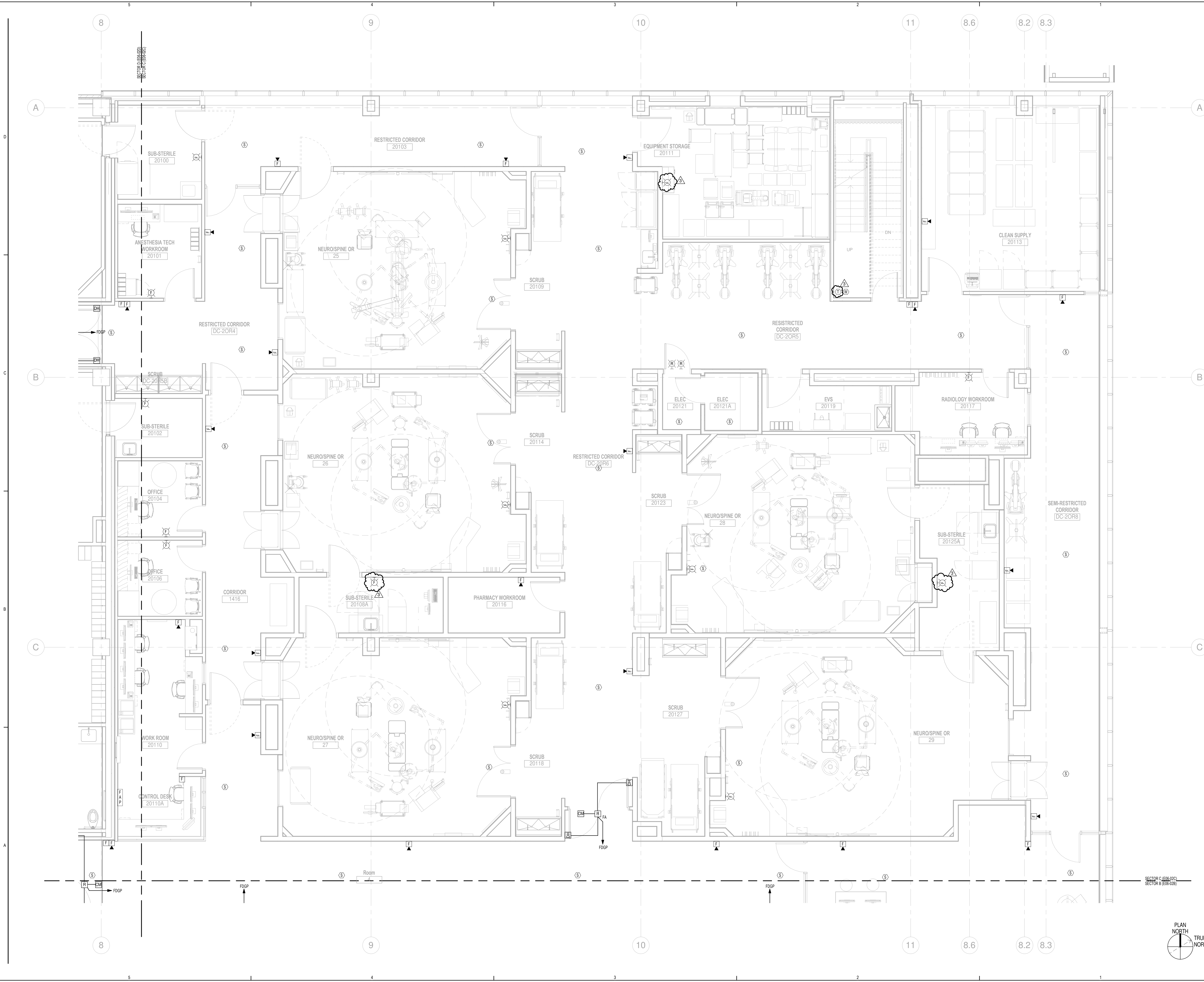
NO	ISSUE	DATE
3	AS1 #2	03-28-14
2	Issued for Permit	02-07-14
1	Addendum #3	01-17-14

**Sheet Information**

Date	JUNE 14, 2013
Job #	C140135461(MMC)/152168.000
Drawn	GN
Checked	RAC
Approved	RAC

**Title**  
**ELECTRICAL  
LEVEL 02 FIRE  
ALARM PLAN -  
SECTOR C**

**Sheet**  
**E06-02C**



3/27/2014 9:52:37 AM  
 C:\Revit Local Files\B120229-MMC\_Bean2-MEP12\B120229-MMC\_Bean2-MEP12\_Lpinelson.rvt