

**Bean 2 Roof  
Addition**  
22 Bramhall Street, Portland,  
Maine 04102

MEP ENGINEER  
**AKF ENGINEERS**

41 Farnsworth Street, 3rd Floor  
Boston, MA 02210  
1617.737.1111  
1617.737.4311

STRUCTURAL ENGINEER  
**SIMPSON GUMPERTZ &  
HEGER**

41 Seyon Street, Building 1, Suite 500  
Waltham, MA 02453  
1781.907.9000  
1781.907.9009

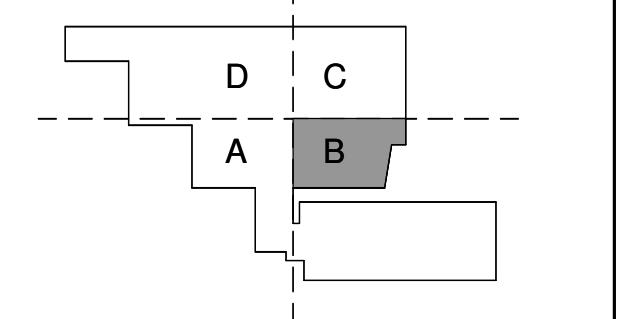
MEDICAL EQUIPMENT PLANNERS  
**RTL ASSOCIATES INC.**

1717 PACIFIC AVENUE  
DALLAS, TX 75201  
1214.468.7600  
1214.468.7601

COST ESTIMATOR  
**DG JONES & PARTNERS**

3 Baldwin Green Common, Suite 202  
Woburn, MA 01801  
1781.932.3131  
1781.932.3199

**CONSTRUCTION  
DOCUMENTS**



**Revisions**

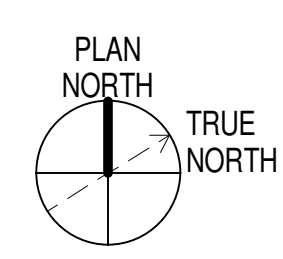
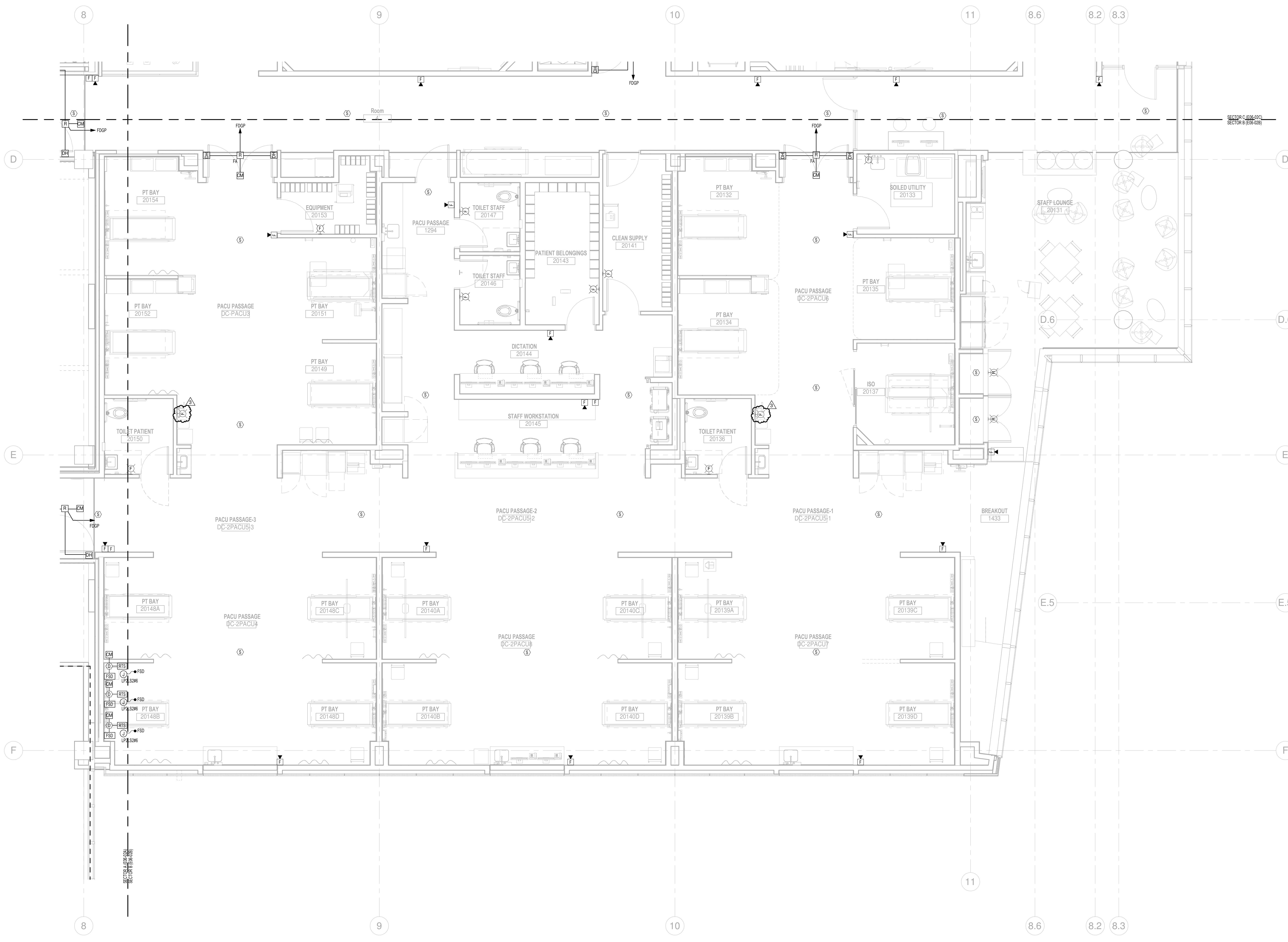
NO	ISSUE	DATE
3	ASI #2	03-28-14
2	Issued for Permit	02-07-14
1	Addendum #3	01-17-14
NO	ISSUE	DATE

**Sheet Information**

Date: JUNE 14, 2013  
Job #: C140135461(MMC)/152168.000  
Drawn: GN  
Checked: RAC  
Approved: RAC

**Title**  
**ELECTRICAL  
LEVEL 02 FIRE  
ALARM PLAN -  
SECTOR B**

**Sheet**  
**E06-02B**



3/27/2014 9:52:23 AM  
C:\Revit Local Files\B120229-MMC\_Bean2 MEP\216120229-MMC\_Bean2 MEP\12\_E06-02B\_Electrical.rvt